



Hugo Marsh
(Director)



Neil Shuttleworth
(Director)



Thomas Plant
(Director)



Toys for the Collector

28th March 2018

at 10:00

Viewing:

27th March 10:00-16:00

Morning of auction from 9:00



Bob Leggett
Toys, Trains &
Figures



Dominic Foster
Toys



Dave Kemp
Fine Diecast



Adrian Little
Figures

Saleroom One,
81 Greenham Business Park,
NEWBURY RG19 6HW
Telephone: 01635 580595
Fax: 0871 714 6905

Email: mail@specialauctionservices.com
www.specialauctionservices.com



Bid Here Without Being Here

All you need is your computer and an internet connection and you can make real-time bids in real-world auctions at the-saleroom.com. You don't have to be a computer whizz. All you have to do is visit www.the-saleroom.com and register to bid - its just like being in the auction room. A live audio feed means you hear the auctioneer at the same time as other bidders. You see the lots on your computer screen as they appear in the auction room, and the auctioneer is aware of your bids the moment you make them. Just register and click to bid!

Order of Auction

Lots

Dinky Toys Cars	1-39
Dinky Toys Commercials	40-95
Dinky Toys Military & Aircraft	96-121
French Dinky Toys	122-147
Corgi Toys Vintage	148-185
Matchbox Toys	186-243
Spot-On	244-246
Britains Motorcycles	247-263
Fire Engine Collection	264-336
White Metal Models	337-346
Japanese Models	347-365
Various Diecast	366-400
Tinplate Toys	401-443
Toys	444-466
Fine Models	467-490
Marine Models	491-493
Pelham Puppets	494-501
Meccano & Other Construction Toys	502-507
Shackleton Foden Models	508-511

Figures

Metal Soldiers Various Makers	512-561
Swiss Collection	562-565
Greenwood & Ball & Reference Collection	566-588
Property of a Gentleman	589-648
Property of a Gentleman Britains Military & Civilian Figures	649-674
Property of a Gentleman Heyde & Noris Figures	675-698



Lot 477



Lot 479

Buyers Premium: 17.5% plus Value Added Tax making a total of 21% of the Hammer Price
Internet Buyers Premium: 20.5% plus Value Added Tax making a total of 24.6% of the Hammer Price

Dinky Toys Cars



1. **Dinky Toy Cars In Hard Plastic Cases**, 216 Dino Ferrari, 208 VW/Porsche 914 Sports Car, 224 Mercedes-Benz C.III, 152 Rolls Royce Limousine, in original boxes, VG-E, 216 plastic base lug broken, boxes F-VG (4) £80-120

2. **Dinky Toys 157 Jaguar XK120 Coupe**, five examples, first yellow body, light yellow hubs, second dark sage green body, fawn hubs, third yellow lower body, grey upper body and hub, fourth turquoise lower body, cerise upper body hubs, fifth white body, fawn hubs, three in remains of original boxes, G-E, boxes P (5) £80-120

3. **1950s-60s Dinky Toy Cars**, 166 Sunbeam Rapier Saloon, yellow lower body, cream upper, beige hubs, in original box, loose 153 Standard Vanguard, mid-blue body, fawn hubs, 132 Packard Convertible, tan body, red interior and hubs, 170 Ford Sedan, red lower body and hubs, cream upper body, 131 Cadillac Eldorado, pink body, beige hubs, 151 Triumph 1800 Saloon, light blue body and hubs, G-E, box P (6) £80-120

4. **Playworn Dinky Toy Cars**, including 157 Jaguar XK120 Coupe, 162 Ford Zephyr, 175 Hillman Minx, Lincoln Zephyr, Packard, Chrysler, Buick and others, P-G (10) £60-80



5. **A Dinky Toys 192 De Soto Fireflite Sedan**, 193 Rambler Cross Country Station Wagon, 133 Cunningham C-5R Road Racer, 237 Mercedes-Benz Racing Car, in original boxes, G-VG, boxes P-F (4) £60-80

6. **A Dinky Toys 164 Vauxhall Cresta Saloon**, dark green lower body, grey upper and hubs, in original box, E, box F-G, loose 162 Ford Zephyr, BMW 2000 Tilux, 114 Triumph Spitfire, 130 Ford Corsair, 153 Aston Martin, F-VG (6) £60-80

7. **A Dinky Toys 340 Land Rover**, green body and hubs, in original box, E, box F-G, loose 1:25 2162 Ford Capri, 915 AEC Flat Truck, Joal No.111 Porsche Carrera 6, Minialuxe Peugeot 504, empty Dinky Toys 173 Pontiac Parisienne box, G-E, boxes P-G (6) £60-80

8. **Dinky Toys 199 Austin Seven Countryman**, 150 Rolls Royce Silver Wraith, 265 Plymouth USA Taxi, in original boxes, VG-E, boxes P-F (3) £60-80



9. **Dinky Toy Cars & Collector's Licence's**, 167 AC Aceca Coupe, 233 Cooper-Bristol, 256 Police Patrol Car, 265 Plymouth USA Taxi, 133 Cunningham C-5R Road Racer, in original boxes, with 1958-9, 1959-60, 1960-61, 1961-2 collector's Licences and Club Letter, P-VG, boxes P-F (10) £60-80

10. **A Dinky Toys 197 Morris Mini Traveller**, cream body, red interior, black gloss base, spun hubs, in original box, E, a few minute chips, box F £40-60



11. **Dinky Toys 139a Ford Fordor Sedan**, five examples, first green body and hubs, second red body and hubs, third fawn body, red hubs, fourth and fifth yellow body and hubs, F-VG, both yellow examples with chip retouching/restoration (5) £60-80

12. **Dinky Toys 170 Ford Fordor Sedan**, four two-tone examples, first lowline red/white body, red hubs, in original box, second loose similar example, third lowline pink/blue body, blue hubs, fourth highline pink/blue body, blue hubs, P-VG, pink lowline with decal to door, box P (4) £60-80

13. **Dinky Toys 173 Nash Rambler**, pink body, blue flash, spun hubs, 179 Studebaker President Sedan, light blue body, dark blue flash, spun hubs, in original boxes, E, boxes F, some tape repair (2) £60-80



14. **Dinky Toys 178 Plymouth Plaza Pair**, first example light blue body, dark blue flash and roof, spun hubs, second example pink body, light green flash and roof, spun hubs, in original boxes, VG-E, boxes F-G, pink box lacks inner tab (2) £60-80

15. **A Dinky Toys 156 Rover 75 Saloon**, two-tone issue, mid-blue upper body, cream lower body and ridged hubs, in box with incorrect colour spot, VG-E, box VG £80-120



16. **A Dinky Toys 167 A.C. Aceca Coupe**, cream body, brown roof, dark cream ridged hubs, in original box, E, a few minute marks, box VG-E £60-80

17. **A Dinky Toys 40b Triumph 1800 Saloon**, mid-grey body and ridged hubs, with later 151 box, VG, box G-VG £60-80

18. **A Hong Kong Dinky Toys 57/001 Buick Riviera**, light blue body, red interior, white roof, spun hubs, in original box, VG-E, box F-G £50-70

19. **A Hong Kong Dinky Toys 57/003 Chevrolet Impala**, pale yellow body, white roof, red interior, spun hubs, in original box, VG-E, retouch to roof, box F £50-70

20. **A Scarce Dinky Toys 260 VW 'Deutsche Bundespost' 1300 Sedan**, German export model, yellow body, white interior, black baseplate, spun hubs, G, retouching to extreme edges £80-120



21. **A Dinky Toys 165 Humber Hawk**, black lower body, green upper body and roof, spun hubs, in original box, loose 135 Triumph 2000, 308 Leyland 384 Tractor, with box base, VG-E, 165 windscreen cracked, box P, base VG (3) £60-80

22. **Dinky Toy Racing Cars**, including 23h/234 Ferrari (6), 23g Cooper-Bristol (4), one boxed, 23n Maserati (4), 23f/232 Alfa Romeo (4), 23k Talbot Lago (3), Mercedes-Benz (2), Auto Union (3) and others, P-VG, box P (39) £150-250

23. **Post-War Dinky Toy Cars**, including 36e British Salmson Two Seater, 38d Alvis, 39d Buick, 40a Riley, Taxi with driver, Morris Oxford and others, P-VG (12) £100-150



24. **A Promotional Dinky Toys 135 Triumph 2000 Saloon**, white body, light grey roof, blue interior, two suitcases, in original box, VG-E, box F, remains of promotional colour-way sticker residue to bottom right corner £300-500

25. **Dinky Toys 211 Triumph TR7 Sports Car**, red body, in original box, loose 157 Jaguar XK120, red body and hubs, 251 Pontiac Parisienne Police Car, E, box G-VG (3) £50-70

26. **39 Series Dinky Toy Cars**, 39c Lincoln Zephyr, grey, 39e Chrysler Royal Sedan, dark grey, 39a Packard Tourer, olive green, 39b Oldsmobile Sedan, grey, 39e Chrysler Royal Sedan, dark blue, all with black ridged hubs, P-VG (5) £80-120

27. **Dinky Toys 38b Sunbeam Talbot Sports**, red body, maroon tonneau, black ridged hubs, similar example with maroon body, grey tonneau, black ridged hubs, 38d Alvis Sports Tourer, maroon body, grey seats, red ridged hubs, 111 Triumph TR2, F-G, maroon Sunbeam lacks windscreen (4) £50-70



28. **A Dinky Toys 170 Ford Fordor Sedan**, blue/pink lowline body, blue ridged hubs, in original box, E, a few small bubbles to paintwork, box VG £60-80

29. **Dinky Toy Racing & Competition Cars**, 163 Bristol 450 Sports Coupe, 238 Jaguar D-Type Racing Car, 237 Mercedes-Benz Racing Car, 236 Connaught Racing Car, 110 Aston Martin DB3 Sports, in original boxes, F-VG, boxes P-G (5) £80-120

30. **Dinky Toys 131 Cadillac Eldorado**, pink body, grey seats, beige hubs, 150 Rolls-Royce Silver Wraith, 174 Hudson Hornet Sedan, 158 Riley Saloon, cream body, in original boxes, G-VG, 150 tyres replaced, boxes P-VG (4) £80-120

31. **A Dinky Toys 167 A.C. Aceca Coupe**, light grey body, red roof and ridged hubs, in original box, E, box VG £60-80



32. **A Dinky Toys 162 Ford Zephyr Saloon**, two-tone blue body, grey ridged hubs, in original box, E, box VG £50-70

33. **A Dinky Toys 153 Standard Vanguard Saloon**, mid-blue body, cream hubs, 3rd casting, in original box, E, box VG £80-120

34. **Dinky Toys Competition & Racing Cars**, 111 Triumph TR2 Sports, turquoise body, RN25, 109 Austin-Healey Sports, orange body, RN21, 108 MG Midget Sports, red body, RN24, 107 Sunbeam Alpine Sports, cerise body, RN34, 133 Cunningham C-5R Road Racer, in original boxes, G-VG, boxes P-F (5) £100-150

35. **Dinky Toys 154 Hillman Minx Saloon**, tan body, cream hubs, 3rd casting, 159 Morris Oxford Saloon, green body, light green hubs, in original boxes, VG-E, boxes F-G (2) £80-120



36. **Dinky Toys 164 Vauxhall Cresta**, green lower body, grey upper and hubs, 166 Sunbeam Rapier Saloon, blue lower body and hubs, turquoise, upper, in original boxes, VG-E, boxes G-VG (2) £80-120

37. **Loose Dinky Toy Cars & Commercials**, including 157 Jaguar XK120 Coupe, turquoise/cerise body, Austin Atlantic, light blue body, Rover 75, Daimler Ambulance, 30v Express Diary Van, Jeep, Dublo Dinky Bedford Flat Truck and others, P-VG, one repainted (15) £100-150

38. **American Cars by Dinky Toys**, 173 Nash Rambler, salmon pink body, blue flash, 132 Packard Convertible, green body, red seats and hubs, 172 Studebaker Land Cruiser, light green body, green hubs, in original boxes G-VG, boxes P-VG (3) £60-80

39. **A Dinky Toys 176 Austin A105 Saloon**, grey body, red flash and hubs, 157 Jaguar XK120 Coupe, red body and hubs, 181 Volkswagen, green body, mid-green hubs, 103 Austin Healey, cream body, red interior and hubs, in original boxes, VG-E, 157 repainted, boxes F-VG (4) £100-150

Dinky Toys Commercials



40. **A Pre-War Dinky Toys 33R 'GWR' Mechanical Horse Trailer Van**, brown/cream body, black smooth hubs, white tyres, F-G, no fatigue £50-70



41. **Dublo Dinky Toys**, 064 Austin Lorry, 065 Morris Pick-Up, 066 Bedford Flat Truck, 069 Massey-Harris Tractor, 072 Bedford Articulated Flat Truck, in original boxes, E, 072 VG with chips around coupling area, boxes G-E (5) £100-150



42. **Dublo Dinky Toys**, 068 Royal Mail Van, 067 Austin Taxi, 071 Volkswagen Delivery Van, in original boxes, E, boxes VG-E (3) £80-120



43. **Dublo Dinky Toys**, 073 Land Rover & Horse Trailer, 076 Lansing Bagnall Tractor & Trailer, 070 AEC Mercury 'Shell' Tanker, in original boxes, E, boxes VG-E (3) £80-120

44. **Dinky Toy Empty Boxes**, all for buses and coaches including 283 BOAC Coach, 291 London Bus, 281 Luxury Coach, 282 Duple Roadmaster and others, G-VG (8) £60-80

45. **Dinky Toy & Dublo Dinky Empty Boxes**, including 449 El Camino Pick-Up, 260 Royal Mail Van, 405 Universal Jeep, 470 Austin Shell Van, 065 Morris Pick-Up, 068 Royal Mail Van, 063 Commer Van, 064 Austin Lorry, F-VG (8) £60-80



46. **A Dinky Supertoys 949 Wayne School Bus**, deep yellow body, red lines, red plastic hubs, in original box, E, slight loss to one decal, box VG £60-80



47. **Dinky Supertoys 502 Foden Flat Truck**, 1st type, dark green cab, flatbed and hubs, black chassis, silver flash, in original box, G, box P, with similar loose example in mid-blue with dark blue chassis, flash and hubs, P, 501 Foden Diesel 8-Wheel Wagon, 1st type pale grey cab and back, red flash, chassis and hubs, F-G (3) £60-80



48. **Dinky Supertoys 502 Foden Flat Truck**, 1st type, dark green cab, flatbed and hubs, black chassis, silver flash, in original box, G-VG, box P, with similar loose 502 Foden Flat Truck, 2nd type orange cab and chassis, green back and hubs, 905 Foden Flat Truck With Chains, 2nd type, maroon cab, flatbed, chassis, red hubs, F-G, chain repaired (3) £80-120



49. **Dinky Toy Construction Vehicles**, 961 Blaw Knox Bulldozer, 571 Coles Mobile Crane, 921 Articulated Lorry, in original boxes, with loose Heavy Tractor and 960 Albion Cement Mixer, VG-E, 571 tyres replaced, boxes P-G (5) £80-120

50. **Dinky Toy Buses & Coaches**, including 283 BOAC Coach, 291 Atlantean City Bus (3), 295 Atlantean Bus, French Dinky 29f Chausson AP521 Autocar, Corgi Toys 468 London Routemaster, in original boxes, with loose 291 Atlantean City Bus, 283 Single Decker Bus, G-E, boxes P-G (9) £60-80



51. **Dinky Toys 472 Austin Van "Raleigh Cycles"**, 261 Telephone Service Van, 255 Mersey Tunnel Police Van, 781 Esso Pump Station, 771 International Road Signs, in original boxes, G-E, boxes P-F, 771 lacks inner display card (5) £60-80



52. **Dinky Toy Small Commercial Vehicles**, including 283 BOAC Coach, 281 Luxury Coach, in original boxes, loose pre-war 29c Double Decker Bus, post-war 482 Bedford Van 'Dinky Toys', 261 Telephone Service Van, 421 Hindle-Smart Helecs, French Dinky Autocar Isobloc and others, P-E, boxes P (10) £80-120



53. **A Dinky Supertoys 967 BBC TV Mobile Control Room**, dark green body, grey grooved hubs, BBC crest, in original box, VG-E, box F £50-70

54. **A Dinky Supertoys 943 Leyland Octopus 'Esso' Tanker**, dark red cab, body and chassis, red hubs, in original box, G-VG, box F £50-70

55. **Dinky Supertoys 983 Car Carrier With Trailer**, red/grey body, grey hubs, 'Dinky Auto Service' decals, in original box, VG, box F £80-120

56. **Dinky Toys 952 Vega Major Luxury Coach**, 295 Atlas Bus (2), 255 Mersey Tunnel Police Van, 670 Armoured Car, 686 25-Pounder Field Gun, 623 Army Covered Wagon, in original boxes, G-E, boxes P-G (7) £60-80

Buyers Premium: 17.5% plus Value Added Tax making a total of 21% of the Hammer Price

Internet Buyers Premium: 20.5% plus Value Added Tax making a total of 24.6% of the Hammer Price

57. **Dinky Toys Wagons & Trailers**, 30n Farm Produce Wagon, green body, type 2 open chassis, black ridged hubs, VG-E, 25r Forward Control Lorry, orange body, green ridged hubs, G-VG, 33w Mechanical Horse & Trailer, grey, black ridged hubs, VG, 25g Trailer (2), early post-war, first fawn, second green, both smooth black hubs, VG, fawn lacks drawbar (5) £60-80



58. ***Dinky Toy Motorcycles**, 270 AA Motorcycle Patrol, SGPW, 43b RAC Motorcycle Patrol, SBRW, 42b Police Motorcycle Patrol (2), 37b Police Motorcyclist, G-E, one 42b detailed (5) **THIS LOT ATTRACTS IMPORT VAT ON THE HAMMER PRICE AT 20% £50-70**

59. **Dinky**, Benbros & Matchbox, including Dinky Toys 265 Plymouth USA Taxi, 283 BOAC Coach, 190 Caravan, 254 Austin Taxi, Benbros TV Series Hay Cart, Gypsy Caravan, Matchbox Roadway Series Layout No.1 and No.R2, in original boxes/packaging, with loose Dinky Toys and a few figures/animals, P-VG, boxes P-F (qty) £80-120

60. **A Dinky Supertoys 968 BBC TV Roving Eye Vehicle**, 982 Pullmore Car Transporter and a modern Corgi Preview Model 2011 Apr-Sep Jaguar XJ6, in original boxes, G-E, boxes P-E (3) £50-70



61. **Dinky Toy Commercials**, 923 Big Bedford Heinz Van, 918 Guy Ever Ready Van, 934 Leyland Octopus Wagon, Luxury Coach, Double Deck Bus and a Chad Valley diecast clockwork Tower Repair Wagon, F-G (6) £80-120

62. **Dublo Dinky Toys**, 066 Bedford Flat Truck, 065 Morris Pick-Up, 063 Commer Van, 062 Singer Roadster, 061 Ford Prefect, with 052 Railway Station Passengers, in original boxes, G-E, boxes F-VG (6) £80-120



63. **Dinky Supertoys 982 Pullmore Car Transporter & Ramp**, blue cab, light blue back, in original box, VG-E, with loose 156 Rover 75, Austin Devon, 157 Jaguar, 181 Volkswagen, G-VG (5) £60-80

64. **Dinky Supertoys 972 Coles Lorry Mounted Crane**, 642 Pressure Refueler, 715 Bristol 173 Helicopter, in original boxes, with loose Schuco tinplate clockwork Mirakocar 1001, G-E, boxes F-G, with graffiti (4) £60-80



Lot 76



Lot 77



65. **Dublo Dinky Toys**, 064 Austin Lorry, 063 Commer Van, 066 Bedford Flat Truck, 068 Royal Mail Van, 076 Lansing Bagnall, 072 Bedford Articulated Flat Truck, black wheels, in original boxes, VG-E, 068 faded, boxes P-VG (6) £80-120

66. **Dublo Dinky Toys**, 073 Land Rover & Horse Trailer, 069 Massey Harris Tractor, 067 Austin Taxi, black wheels, 061 Ford Prefect, 062 Singer Roadster, in original boxes, VG-E, boxes P-G (5) £80-120



67. **Dublo Dinky Toys**, 064 Austin Lorry, 063 Commer Van, 066 Bedford Flat Truck, 068 Royal Mail Van, 076 Lansing Bagnall, 072 Bedford Articulated Flat Truck, in original boxes, VG-E, 076 slight corrosion, boxes P-VG (6) £80-120

68. **Dublo Dinky Toys**, 071 Volkswagen Delivery Van, 065 Morris Pick-Up, 070 AEC Mercury Shell BP Tanker, 061 Ford Prefect, 062 Singer Roadster, in original boxes, VG-E, 065 retouched, boxes F-VG (5) £80-120

69. **Dinky Toy Emergency Service Vehicles**, 276 Airport Fire Tender, 252 Pontiac R.C.M.P Car, 267 Superior Cadillac Ambulance, in original boxes, VG-E, boxes F (3) £60-80

70. **Dinky Toys**, 295 Standard Atlas, light blue body, 289 Routemaster Bus, 293 Leyland Atlantean Bus, 623 Army Covered Wagon, 674 Austin Champ, 239 Vanwall Racing Car, 781 Petrol Pump Station 'Esso', in original boxes, with loose Matchbox Lesney 59 Singer Van, VG-E, 293 has no glass in lower deck, boxes P-F (8) £80-120



71. **Dinky Supertoys**, 901 Foden Diesel 8-Wheel Wagon, 984 Car Carrier, 981 Horse Box, 651 Centurion Tank, 660 Tank Transporter, 962 Dumper Truck, in original boxes, P-G, 984 rear ramp broken, boxes P-F (6) £80-120



72. **A Dinky Toys 25f Market Gardener's Lorry**, green body, type 4 black chassis and ridged hubs, E £40-60

73. **Collection Of Post-War Dinky Toys**, including 564 Elevator Loader, in original box, loose Observation Coach, Leyland Royal Tiger, Single Deck Bus, 23j Alfa Romeo, 23g Cooper-Bristol, 641 Army Cargo Truck, Flying Boat, Viking, Market Gardeners Lorry, Morris Oxford, Lagonda, Royal Mail Van, Taxi with driver, 674 Austin Champ and others with a Tri-ang Minic Dust Cart, boxed Britains Height Finder and a few loose soldiers, P-VG, boxes F-G (35+) £150-200

74. **Playworn Dinky Toy Commercials**, including Aveling-Barford (2), Daimler Ambulance (2), Observation Coach, 25c Flat Truck, 25a Wagon (6), 454 Trojan Van 'Cydrax', Loud Speaker Van and many others, P-VG (30+) £150-200

75. **Dinky Toys 425 Bedford TK Coal Lorry**, red body, blue interior, clear windows, scales, roof sign, Matchbox Major Pack M-4 Fruehauf Hopper Train, in original boxes, VG, boxes G -VG (2) £50-70

76. **A Dinky Supertoys 968 BBC TV Roving Eye Vehicle**, dark green body, grey grooved hubs, BBC crest, camera, aerial, in original box with packing piece, E, few minor marks to rear, box G £60-80

77. **A Dinky Supertoys 969 BBC TV Extending Mast Vehicle**, dark green body, grey grooved hubs, BBC crest, dish aerial, in original box with two inner packing pieces, E, box VG, lid split in one corner £80-120

78. **Dinky Toy Commercials**, 982 Pullmore Car Transporter with Ramp, in original box, loose 514 Guy 'Slumberland' Van, 502 Foden Flat Truck, French Dinky 25b Peugeot 'Postes' Van, well restored 505 Foden Flat Truck With Chains and 411 Bedford Truck, F-E, box F (6) £100-150



79. **A Dinky Supertoys 943 Leyland Octopus 'Esso' Tanker**, dark red cab, body and chassis, red grooved hubs, in original box, VG, box F-G, lid split in one corner £60-80



80. **A Dinky Toys 905 Foden Flat Truck With Chains**, 2nd type dark green cab, chassis and flatbed, mid-green grooved hubs, in original box, VG, box G £80-120

81. **A Dinky Supertoys 502 Foden Flat Truck**, 1st type dark green cab, flatbed and hubs, black chassis, silver flash, in original box, VG, box P-F £80-120

82. **A Dinky Toys 514 Guy 'Spratts' Van**, 1st type red cab, chassis and hubs, cream/red van body, in '917' box, 901 Foden Diesel 8 Wheel Wagon, 2nd type red cab, chassis and hubs, fawn back, in original box, VG, both retouched, boxes P-F (2) £100-150

83. **Dinky Toy Commercials**, 251 Aveling Barford Diesel Roller (2), 2nd type Foden Flat Truck, orange cab/chassis, green hubs and flatbed, 34b Royal Mail Van, 22c Motor Truck, 30e Breakdown Lorry, 25g/429 Trailer (8), all differing variations, one pre-war, F-VG, with remains of 251 box (14) £100-150



84. **A Dinky Supertoys 514 Guy 'Slumberland' Van**, 1st type red cab/chassis/body and ridged hubs, 642 RAF Pressure Refueler, well restored 513 Guy Flat Truck with tailboard, dark green cab and chassis, mid-green back and hubs, in original boxes, G-VG, boxes P-F (3) £60-80

85. **Dinky Toys 434 Bedford TK Crash Truck**, white body, dark green plastic hubs, 'Top Rank' decals, 978 Refuse Wagon, metallic green cab, two bins, 981 Horse Box, 420 Forward Control Lorry, red body, mid-green hubs, 470 Austin Shell Van, in original boxes G-E, 978 lacks one small plastic bin loading ramp, boxes P-VG, 981 lid only (5) £100-150

86. **A Dinky Toys 942 Foden 14-Ton 'Regent' Tanker**, 2nd type dark blue cab and chassis, red/white/blue tank, red grooved hubs, in original box, G-VG, box P-F, some damp damage £60-80

87. **A Dinky Toys 941 Foden 14-Ton 'Mobilgas' Tanker**, 2nd type red cab, chassis, tank and grooved hubs, in original box, VG-E, box P, damp damage £80-120

88. **A Dinky Toys 902 Foden Flat Truck**, 2nd type orange cab and chassis, mid-green flatbed and grooved hubs, in original box, G-VG, box P, damp damage £50-70

89. **A Dinky Toys 982 Pullmore Car Transporter**, light blue cab and back, mid-blue hubs, fawn decks, 994 Loading Ramp, 965 Euclid Rear Dump Truck, in original boxes, VG-E, boxes P-VG (3) £80-120



90. **A Dinky Toys 482 Bedford 'Dinky Toys' Van**, orange-yellow lower body, lemon upper body and hubs, in original box, E, baseplate paint flaking, box G £60-80

91. **A Dinky Toys 480 Bedford 'Kodak' Van**, yellow body, red ridged hubs, in original box, E, one chip to roof, box G, name in pen to top side £50-70

Lot 86



Lot 87



Buyers Premium: 17.5% plus Value Added Tax making a total of 21% of the Hammer Price
Internet Buyers Premium: 20.5% plus Value Added Tax making a total of 24.6% of the Hammer Price

92. **Dinky Toy Small Commercial Vehicles**, 470 Austin 'Shell' Van, 260 Royal Mail Van, 450 Trojan 'Esso' Van, in original boxes, VG-E, boxes G-VG (3) £80-120

93. **Dinky Toys 283 B.O.A.C. Coach**, 400 B.E.V Electric Truck, 341 Land Rover Trailer, 190 Caravan, No.1 Station Staff, in original boxes, empty 34c Loud Speaker Van trade box, G-E, No.1 set lacks one figure, boxes F-VG (6) £100-150



94. **Dinky Supertoys 982 Pullmore Car Transporter & Ramp**, blue cab, light blue back and decks, in original box, VG-E, box F-G £50-70

95. **Dinky Commercial & Military Vehicles**, 282 Land Rover Fire Appliance, 660 Tank Transporter, 651 Centurion Tank, in original boxes, loose Centaur Dump Truck, Mercedes Container Truck & Trailer, Coles Hydra Crane, AEC Articulated Lorry, Johnston Road Sweeper, Merryweather Fire Tender, VG-E, some fading, 282 lacks one roof siren, boxes P-G (9) £100-150

Dinky Toys Military & Aircraft

96. **A Dinky Supertoys 660 Tank Transporter**, 651 Centurion Tank, 622 10-Ton Army Truck, with 965 Euclid Rear Dump Truck, 972 20-Ton Lorry Mounted Crane "Coles", in original boxes, G-VG, boxes P-F (5) £100-150



97. **Military Dinky Toys**, 661 Recovery Tractor, 651 Centurion Tank, 622 10-Ton Army Truck (2), 691 Striker Anti-Tank Vehicle, in original boxes, G-E, boxes P-G (5) £60-80

98. **A Dinky Toys 731/70d Twin Engined Fighter Trade Box**, containing two examples, both silver with red three blade propellers, E, box G, lacks dividers £40-60



Lot 102

99. **Military Dinky Toys**, including 660 Tank Transporter, 10-Ton Army Truck, 626 Military Ambulance, 621 3-Ton Army Wagon, 641 Cargo Truck (2), 733 Hawker Hunter (2), 735 Gloster Javelin and others, F-VG (18) £60-80

100. **A Dinky Supertoys 660 Tank Transporter**, in original box with inner packing pieces, 651 Centurion Tank, 622 10-Ton Army Truck, in original boxes, loose 6673 Scout Car, VG-E, 660 black paint marks on one side, 622 end of bumper broken, boxes F-G, 651 with graffiti (4) £60-80



101. **Bubble-Packed Military Dinky Toys**, 656 88mm Gun, 620 Berliet Missile Launcher, 699 Leopard Recovery Tank, 696 Leopard Anti-Aircraft Tank, 692 Leopard Tank, 683 Chieftain Tank, 625 6 Pounder Anti-Tank Gun, in original boxes, E, boxes P-VG (7) £100-150

102. **A Dinky Supertoys 666 Missile Erector Vehicle With Missile & Platform**, black plastic erector gears, all white missile, in original box with inner packing and instructions, VG-E, box VG £60-80

103. **Military Dinky Supertoys**, 667 Missile Servicing Platform Vehicle, 661 Recovery Tractor, 689 Medium Artillery Tractor, in original boxes, VG, boxes F-VG (3) £60-80

104. **Bubble-Packed Military Dinky Toys**, 654 155mm Mobile Gun, 691 Striker Anti-Tank Vehicle, 665 Honest John Missile Launcher, 281 Military Hovercraft, 694 Tank Destroyer, 676 Daimler Armoured Car, 680 Ferret Armoured Car, 681 DUKW Amphibian, in original boxes, VG-E, boxes P-VG (8) £100-150

105. **Military Dinky Toys**, 641 Army 1-Ton Cargo Truck, 676 Armoured Personnel Carrier, 643 Army Water Tanker, 626 Military Ambulance, 693 7.2 Howitzer, 674 Austin Champ, in original boxes, VG-E, boxes P-F (9) £60-80

106. **Military Dinky Toys**, 670 Armoured Car, 686 25-Pounder Field Gun, 621 3-Ton Army Wagon, 677 Armoured Command Vehicle, 688 Field Artillery Tractor, 692 5.5 Medium Gun, in original boxes, VG-E, boxes P-G (6) £60-80

107. **Dinky Toys 604 Land Rover Bomb Disposal Unit**, with unmade Surveillance Robot Kit, 668 Foden Army Truck, 690 Scorpion Tank, 612 Commando Jeep, in original boxes, E, boxes G-VG (4) £60-80



108. **Pre-War Military Dinky Toys**, 151a Medium Tank, chain tracks, aerial, 152a Light Tank, white markings, chain tracks, aerial, similar example in drab olive, 162 18-Pounder Field Gun Set, F-VG, drab olive lacks aerial, 162b lacks hook (6) £80-120

109. Dinky Toys 152b Reconnaissance Car, military green body, olive drab ridged hubs, 151b 6-wheel Covered Wagon, 651 Centurion Tank and other loose military vehicles, with boxed Corgi 906 Saladin Armoured Car, 923 Thorneycroft, Lledo 1942 Dodge, Dinky 667 Armoured Patrol Car, F-E, 667 repainted, some non-military Dinky Toys repainted in military green, boxes F-VG (17) £60-80

110. Dinky Toys 697 25-Pounder Field Gun Set, 660 Tank Transporter, 651 Centurion Tank (2), in original boxes, G-E, boxes F-G (4) £80-120



111. Military & Aircraft Dinky Toys, including boxed 702 D.H Comet Airliner, loose 660 Tank Transporter, 651 Centurion Tank, 622 10-Ton Army Truck, 621 3-Ton Army Wagon, 626 Military Ambulance, Light Tank, Jeep and others, F-VG, box P (14) £80-120

112. Dinky Toys 651 Centurion Tank (2), 622 10-Ton Army Truck, 994 Pullmore Car Transporter Loading Ramp, in original boxes, G-VG, boxes P-G (4) £80-120

113. Small Dinky Toy Aircraft, 734 Supermarine Swift, 735 Gloster Javelin, 716 Westland Sikorsky Helicopter, 715 Bristol 173 Helicopter, French Dinky 60a Mystere IV, 60b Vautour, in original boxes, VG-E, boxes P-G (6) £80-120

114. Dinky Toys 706 Vickers Viscount Air Liner, 70a Avro York Air Liner, 708 Vickers Viscount 800, 702 Comet, in original boxes, with eight loose small aircraft, Tempest II, Viking, Seaplane and others, one Solido Trident, P-E, boxes P-F (12) £100-150



115. Dinky Toys & Matchbox Catalogues, Dinky 1965 UK 2nd Edition (6), 1974 No.10, 1975 No.11, Matchbox 1965 Collectors Catalogue (2), 1958 Issue, F-VG, Matchbox 1958 with graffiti throughout (11) £40-60

116. Dinky TV & Film Toys, 358 U.S.S Enterprise, 107 Stripey The Magic Mini, in original boxes, with loose Ed Strakers Car and another 107 Stripey The Magic Mini, F-VG, boxed 107 come only with Candy plastic figure, 358 with only one missile, boxes P-F (4) £60-80

117. Dinky Toys 771 International Road Signs, 781 Esso Petrol Pump Station, 751 Lawn Mower, 341 Land Rover Trailer, green, in original boxes with 9th Edition Catalogue, VG-E, boxes F-G (5) £60-80

118. A Dinky Toys 103 Spectrum Patrol Car From Captain Scarlet, metallic red body, white base, blue tinted windows, yellow interior, in original box with instructions, aerial and packing piece, E, box G-VG £60-80



119. Thunderbirds Dinky Toys, 100 Lady Penelope's FAB 1, pink body, clear sliding roof, cast spun hubs, Lady Penelope and Parker figures, one rocket and four harpoons, in original box with inner stand, 101 Thunderbirds 2 & 4, gloss green, red thrusters, yellow legs, in original box with inner stand, G-VG, FAB1 metal base corroded, Thunderbird 2 thrusters repaired, boxes P-F (2) £80-120

120. A Dinky Toys 353 U.F.O Shado 2 Mobile, green body, red interior, brown rollers, silver tracks, light green base, two missiles, in original box with inner packing piece and instructions, E, minor corrosion mark to roof, box G-VG £50-70

121. Dinky Toy TV & Film Toys, 106 The Prisoner Mini-Moke, 105 Captain Scarlet Maximum Security Vehicle, in original boxes, 104 Spectrum Pursuit Vehicle, in repro box, G-VG, 106 rear tyre cover damaged, boxes P-G (3) £60-80

French Dinky Toys



122. A French Dinky Toys 29f Chausson AP521 Autocar, blue/cream body, painted ridged hubs, in original box, E, a few minor chips, box VG £40-60

123. A French Dinky 828 Jeep SS10 Missile Launcher, driver, missile battery, concave hubs, 829 Jeep 106SR Gun Carrier, driver, plastic gun, concave hubs, in original boxes, E, boxes VG (2) £80-120

124. A French Dinky 810 Dodge WC56 Command Car, soldier, net, concave hubs, 800 Renault 4x4 Sinpar, khaki body, two soldiers, black plastic radio, concave hubs, in original boxes, E, boxes F-G (2) £80-120



125. A French Dinky 806 Berliet Recovery Truck, khaki body, plastic driver, hook, concave hubs, in original box, E, box G-VG £60-80

Buyers Premium: 17.5% plus Value Added Tax making a total of 21% of the Hammer Price
Internet Buyers Premium: 20.5% plus Value Added Tax making a total of 24.6% of the Hammer Price

126. **A French Dinky 883 AMX 13 Bridge Layer**, matt military green body, plastic bridge, in original box with instruction sheet, E, box VG £60-80

127. **A French Dinky 809 GMC US Army 6x6 Truck**, olive drab body, black plastic roof, concave hubs, in original box with inner stand, E, lacks driver, box F-G £60-80



128. **French Dinky 815 Panhard EBR75 FL11**, matt finish, 80C AMX 13 Tank, matt finish, 802 Obusier ABS 155mm Gun, khaki body, camouflage net, in original boxes, VG-E, 815 slight front axle bend, boxes F-G (3) £60-80

129. **French Dinky 822 Half-Track M3**, matt finish, with machine gun, concave hubs, 823 Marion Mobile Kitchen, khaki body, black base, concave hubs, in original boxes, E, boxes G (2) £60-80

130. **French Dinky 824 Berliet Gazelle 6x6 Truck**, plastic tilt, concave hubs, 818 Berliet 6x6 All-Terrain Truck, tinplate tilt, concave hubs, in original boxes, E, boxes F-VG (2) £80-120

131. **French Dinky 826 Berliet Recovery Truck**, khaki body, plastic hook, black base, concave hubs, 818 Berliet 6x6 All-Terrain Truck, tinplate tilt, concave hubs, 'Tous Terrains Berliet' to base, in original boxes, E, 826 with pink instruction sheet, lacks driver, boxes F-G (2) £80-120

132. **French Dinky 813 AMX With 155mm ABS Gun**, matt finish, camouflage net, 827 Panhard EBR75 FLO, khaki body, aerial, 814 Panhard Armoured Car, khaki finish, concave hubs, aerials, in original boxes, VG-E, boxes G-VG (3) £80-120



133. **French Dinky 825 GMC DUKW Amphibian**, matt finish, drums, boxes, driver, 807 Renault All-Terrain Ambulance, khaki body, plastic hubs, unused decals, in original boxes, E, boxes P-G (2) £60-80

134. **French Dinky 822 Half-Track M3**, matt finish, no machine gun, concave hubs, 821 Mercedes-Benz Unimog, 813 AMX with 155mm ABS Gun, matt finish, in original boxes, VG-E, boxes P-G (3) £80-120

135. **A French Dinky Toys 557 Citroen Ami 6**, fourth type, pale green body, pale grey roof, red interior, aluminium hubs, 'Dunlop' tyres, in original box, E, box VG-E £60-80



136. **A French Dinky Toys 24v Buick Roadmaster**, salmon-pink body, black roof, plated convex hubs, cross-hatched inside roof, VG £150-250

137. **French Dinky Toys 534 BMW 1500**, lime green body, red interior, plated concave hubs, 511 Ferrari Racing Car, red body, white driver, RN38, plated convex hubs, in original boxes, VG, 511 minor retouches, boxes G-VG (2) £100-150

138. **French Dinky Toys 29f Chausson AP521 Autocar**, red/cream body, in original box, similar loose example, blue/cream body, 29e Isobloc Autocar, dark green/light green, smooth roof, similar later example, red/silver body, ridged roof, G-VG, box VG (4) £80-120



139. **French Dinky Commercials**, 34b Berliet Container Truck, 578 Simca Cargo Tipper Truck, 560 Citroen Postal Service Van, 25bv Peugeot Post Van, in original boxes, G-E, boxes P-F (4) £100-150

140. **A French Dinky Toys 24h Mercedes 190SL**, cream body, black roof, convex hubs, in original box, E, box VG-E £50-70

141. **A French Dinky Toys 24u Simca 9 Aronde**, blue body, white roof, convex hubs, in original box, E, box VG-E £60-80

142. **A French Dinky Toys 24f Peugeot 403 Familiale**, sky blue body, plated convex hubs, in original box, E, a few small chips, box VG-E £50-70



143. **A French Dinky Supertoys 60c Super G Constellation Lockheed**, silver body, 'Air France' livery, in original box, E, box VG £60-80

144. **French Dinky Toy Car Group**, 24a Chrysler New Yorker, red body, 24c Citroen DS19, green body, white roof, 24b Berline 403 Peugeot, blue body, 24x Ford Vedette 54, grey body, in original boxes, F-VG, boxes P-G (4) £100-150

145. **French Dinky Toy Car Group**, 24u Simca 9 Aronde, grey body, 24e Renault Dauphine, red body, 24x Ford Vedette 54, grey body, 24d Plymouth Belvedere, green/black body, in original boxes, F-VG, boxes F-VG (4) £80-120

146. **French Dinky Toy 24y Studebaker Commander**, orange body, tan roof, 24z Simca Versailles, light blue body, white roof, 24v Buick Roadmaster, creamy yellow body, green roof, in original boxes, G-VG, boxes F-G (3) £80-120

147. **French Dinky Toys**, 29f Chausson AP521 Autocar, 41 Road Signs, in original boxes, loose Simca 8 Sport, 24n Citroen 11BL, Peugeot 203, Citroen 2CV, Ford Vedette, 24v Buick Roadmaster, Studebaker Farm Produce Truck, P-VG, Vedette repainted, boxes G (9) £100-150

Corgi Toys Vintage



148. **A Corgi Toys 475 Citroen Safari 'Olympic Winter Sports'**, off-white body, red roof rack, four yellow skis, four yellow poles, skier figure, in original box with instructions, E, box VG £60-80

149. **Corgi Toys Formula 1 Racing Cars**, 150S Vanwall, 152S B.R.M (2), 158 Lotus Climax (2), 156 Cooper-Maserati, 155 Lotus Climax, 154 Ferrari (2), 159 Cooper-Maserati, F-VG, three lack drivers (10) £60-80

150. **Corgi Toys Competition & Sports Cars**, including 339 BMC Mini Cooper S, 318 Lotus Elan S2, Marcos Volvo 1900, Ferrari Berlinetta, Lancia Fulvia Zagato, yellow/black, 345 MGC GT and others, G-VG (12) £80-120

151. **Corgi Toys 316 Ford GT70**, 384 Adams Bros. Probe 16, in original boxes, loose Porsche Carrera 6, 161 Commuter Dragster, 162 Quartermaster Dragster, 1:18 190 JPS Lotus F1 and other racing cars, G-E, boxes G-VG (15) £60-80



152. **Corgi Toys Cars & Commercials**, including 436 Citroen Safari ID19, Corgi Classics 9012 Ford, 9001 Bentley, in original boxes, loose Saint's Volvo, Hillman Husky, Mini Marcos, Commer Milk Float and others, F-E, boxes F-G (13) £80-120

153. **Corgi Whizzwheels**, 388 Mercedes-Benz C111, 380 Alfa-Romeo Pinin Farina P.33, 162 Quartermaster Dragster, with Matchbox G-16 Sky Giants Set, in original boxes, E, boxes G-VG (4) £50-70

154. **A Corgi Toys 330 Porsche Carrera 6**, white body, red bonnet and doors, RN60, cast hubs, blue engine cover, 159 Cooper-Maserati F1, yellow/white body, RN3, in original boxes with club leaflets, E, boxes VG-E (2) £60-80



155. **A Corgi Toys 201 Austin Cambridge Saloon**, silver over metallic green body, flat spun hubs, in original box with club leaflet, E, box F, stained £50-70

156. **Corgi Toys**, including 801 Noddy's Car with Noddy, Big Ears and grey faced Golly, 807 Dougal's Magic Roundabout Car (2), 859 Mr McHenry's Trike, 1146 Tri-Deck Car Transporters and others, F-E (9) £80-120

157. **A Corgi Juniors 3029 Military Gift Set**, E2011 US Army Tanker, 2012 Military Transporter, in original boxes, E, boxes VG (3) £50-80

158. **Boxed Corgi Toys**, 226 Morris Mini Minor, pale blue body, red interior, flat spun hubs, 223 Chevrolet Police Patrol, 211S Studebaker Golden Hawk, 234 Ford Consul Classic, 53 Massey Ferguson, 102 Rice's Pony Trailer with Pony, 51 Trailer, in original boxes, F-E, 223 lacks door stickers, boxes P-F (7) £100-150

159. **A Corgi Toys 391 James Bond Ford Mustang Mach 1**, red body, black bonnet, off-white interior, spoked hubs, in original box, VG-E, box G £60-80



160. **A Corgi Toys Gift Set 8 Lions Of Longleat**, comprising Land Rover, keeper, three lions, plastic den, two joints of meat, barrel, in original window box, VG-E, keepers gun lacks tip, box G, no header card £50-70

161. **Corgi Toys 393 Mercedes-Benz 350SL Trade Pack**, comprising six models in original boxes sealed in pack, E, boxes E, small dent to one £100-150

162. **Corgi Toys 53 Massey-Ferguson 65 Tractor With Shovel**, 437 Superior Ambulance, Dinky Toys 292 Leyland Atlantean Bus, French Dinky 893 Unic Sahara Pipe Truck, in original boxes, F-VG, boxes P-F (4) £80-120

163. **1980s Corgi Toys**, including GS9 limited edition Mumbles Lifeboat Set, 314 Supercat Jaguar XJS (2), 318 Jaguar XJS, 425 London Taxi and seventeen Routemaster or similar buses, in original boxes, E, boxes F-VG (22) £80-120

164. **1970s-80s Corgi Military Vehicles**, including 904 German King Tiger Tank, 905 SU100 Russian Tank Destroyer, 903 Chieftain Tank, 902 Medium Tank and others, with Dinky 691 Striker Anti Tank Vehicle, in original boxes, VG-E, boxes P-G (14) £100-150

Buyers Premium: 17.5% plus Value Added Tax making a total of 21% of the Hammer Price

Internet Buyers Premium: 20.5% plus Value Added Tax making a total of 24.6% of the Hammer Price



Lot 170



Lot 171



Lot 172



Lot 173



165. A Corgi Toys 441 Volkswagen "Toblerone" Van, light blue body, trans-o-lite headlamps, spun hubs, in original box, E, box F-G £50-70



168. A Corgi Toys 261 James Bond's Aston Martin, gold body, red interior, wire wheels, Bandit figure, 335 Jaguar E Type, 245 Buick Riviera, in original boxes, loose 472 Public Address Land Rover, G-VG, 261 lacks any secret instructions, boxes P, stand F (4) £60-80



166. A Corgi Toys Gift Set 31 The Riviera, comprising Buick Riviera, Dolphin 20 Cabin Cruiser, Brooklands Trailer, Water Skier, Captain figure, in original box with inner tray and instructions, VG, underside on water skier heavily damaged, lacks rope, box P, tray G £50-70

169. A Corgi Toys Gift Set 3 Thunderbird Guided Missile & RAF Land Rover, in original box with inner card strengthening piece, VG-E, 351 Land Rover appears to factory overpainted yellow Land Rover, box G £60-80

170. A Corgi Toys 336 James Bond's Toyota 2000 GT, white body, red aerial, 2 figures, rocket launchers in boot, in original box with display stand, four rockets, VG, boot doesn't close, box G-VG, some staining, stand G-VG, some sticker damage £60-80

171. A Corgi Toys 497 The Man From Uncle Thrush-Buster, dark metallic blue body, plastic spotlights, in original box with Waverly Ring, display stand, inner packing piece and club leaflet, E, box VG, stand VG-E £100-150

172. A Corgi Toys 268 The Green Hornet's Black Beauty, black body, green interior, spun hubs, driver and Green Hornet figures, in original box with display stand, one missile, one radar spinner, E, however rocket firing trigger snapped, spinner mech defunct, box G-VG, stand E £50-70

173. A Corgi Toys 256 Volkswagen 1200 East Africa Safari Trim, orange body, RN18, spun hubs, Rhinoceros figure, in original box with inner stand and leaflet, VG-E, box G, stand G-VG £60-80

174. **Corgi Toys TV & Film Diecast**, 267 Batman's Batmobile, 107 Batboat & Trailer, 266 Chitty Chitty Bang Bang, in reproduction boxes, 261 James Bond's Aston Martin DB5, 497 The Man From Uncle Thrush Buster, in original boxes with inner stands, 497 stand repro, loose The Beatles Yellow Submarine, P-VG, 497 white version heavily retouched, boxes P-F (6) £80-120

175. **A Corgi Toys Gift Set 8 Lions Of Longleat**, comprising Land Rover, keeper, rifle, three lions, plastic den, five joints of meat, barrel, in original window box, VG, mismatched set, lions differ in colour, three pieces of meat repro, box P-F, cellophane replaced, 490 Volkswagen Breakdown Truck, olive green body, in original box, E, box VG (2) n£60-80



176. **A Corgi Major Toys 1101 Bedford Carrimore Car Transporter**, red cab, blue transporter body, flat spun hubs, in original box with packing piece, VG-E, box VG £50-70

177. **A Corgi Toys 207 Standard Vanguard III**, off-white body, red roof, flat spun hubs, in original box, E, box G-VG £50-70



178. **A Corgi Toys 302 MG 'MGA'**, red body, cream seats, flat spun hubs, in original box, E, box VG £60-80

179. **A Corgi Toys 301 Triumph TR2 Sports Car**, cream body, red seats, flat spun hubs, in original box, E, box VG £60-80

Buyers Premium: 17.5% plus Value Added Tax making a total of 21% of the Hammer Price
Internet Buyers Premium: 20.5% plus Value Added Tax making a total of 24.6% of the Hammer Price

180. **A Corgi Toys 208 Jaguar 2.4 Litre**, white body, flat spun hubs, in original box, E, box VG £60-80



181. **Corgi Toys Racing Cars**, 152 B.R.M Formula 1 Grand Prix Racing Car, dark green body, RN7, 150 Vanwall Formula 1 Grand Prix, green body, RN3, 151 Lotus Mk 11 Le Mans Racing Car, red, RN3, in original boxes, G-VG, 151 significant corrosion along offside of body, boxes F-G (3) £60-80

182. **1950s-60s Corgi Toy Cars**, 205 Riley Pathfinder Saloon, red body, 204 Rover 90 Saloon, grey body, 209 Riley Pathfinder Police Car, black, all flat spun hubs, in original boxes, G-VG, boxes F-G (3) £80-120

183. **A Corgi Toys 202 Morris Cowley Saloon**, very pale green body, flat spun hubs, non motorised version (this colour normally having mechanical motor), in original box, VG, box G £60-80

184. **Corgi Toys 211 Studebaker Golden Hawk**, light blue body, gold wings, 210 Citroen DS19, metallic green body, black roof, 351 RAF Land Rover, all flat spun hubs, in original boxes, loose Chevrolet Corvette Sting Ray, empty 353 Decca Airfield Control Radar box, G-VG, boxes F-VG (5) £100-150

185. **Corgi & Other Commercial Vehicles**, 1152 'Esso' Mack Tanker, 1106 Mack Container Truck, 1104 Bedford New Market Horse Transporter, 1160 Gulf Petrol Tanker, 1102 Fruehauf Dumper, Land Rover & Horsebox, RAF Land Rover, with boxed Lion Toys DAF Container Truck, Budgie Royal Navy Scammell Scarab, VG-E, boxes G-VG (9) £80-120

Matchbox Toys



186. **Matchbox MICA Re-Issue Soap Box Racer**, ltd edition of 500, with MICA re-issue Covered Wagon, ltd edition of 650, in original boxes, E, boxes VG (2) £60-80



187. **A Matchbox Lesney 1-75 Series 41b Jaguar D-Type**, green body, black base, RN5, wire hubs, in original box, E, box E £50-70

188. **A Matchbox Lesney 1-75 Series 12b Land Rover**, green body, GPW, in original box, E, box E £80-120

189. **Matchbox Lesney 1-75 Series Military Vehicles**, 12b Land Rover, 54a Saracen Personnel Carrier, 64a Scammell Breakdown Truck, 68a Austin Radio Truck, in original boxes, E, boxes VG-E (4) £60-80



190. **Matchbox Lesney 1-75 Series 70a Ford Thames Estate Car**, three differing examples, SPW, GPW, BPW, all turquoise/yellow body, green windows, in original boxes, E, boxes VG-E (3) £60-80

191. **A Matchbox Lesney 1-75 Series 41b Jaguar D-Type**, green body, black base, RN5, wire hubs, in original box, E, minute decal loss, box E £50-70

192. **Matchbox Lesney 1-75 Series 12b Land Rover**, three differing variations, one KBPW in type C box, one thin steering wheel column, one thick steering wheel column, all green body, in original boxes, VG-E, boxes G-E (3) £50-70

193. **Matchbox Lesney 1-75 Series 52a Maserati 4 CLT**, lemon yellow body, RN52, 29b Austin A55 Cambridge, BPW, 70a Ford Thames Estate, BPW, in original boxes, E, boxes VG-E (3) £60-80



194. **Matchbox Lesney 1-75 Series**, 52a Maserati 4 CLT, 70s Ford Thames Estate Car (2), GPW, 29b Austin A55 Cambridge, SPW, 68a Austin Radio Truck, 54a Saracen Personnel Carrier (2), 12b Land Rover and a MOY No.7, in original boxes, VG-E, 68a body twisted, factory error, boxes P-VG (9) £80-120

195. **Matchbox Superfast**, 51 Citroen SM, 34 Vantastic, 28 Stoot, 75 Alfa Carabo, 36 Formula 5000, 47 Beach Hopper, 35 Fandango, in original boxes with two loose examples, VG-E, boxes F-VG (9) £50-70

196. **Matchbox Lesney 1-75 Series Empty Boxes**, type A and B boxes including 75 Thunderbird, 39 Zodiac Convertible, 6 Quarry Truck, 70 Thames Estate Car and many others, P-VG (21) £80-120



197. **Matchbox Lesney 1-75 Series Empty Boxes**, type D boxes including 22 Vauxhall Cresta, 14 Lomas Ambulance, 6 Quarry Truck, 7 Ford Anglia and many others, F-E (20) £80-120

198. **Matchbox Lesney 1-75 Series Empty Boxes**, type E boxes including 25 Ford Cortina, 37 Cattle Truck, 57 Land Rover Fire Truck and many others, F-E (22) £80-120

199. **Matchbox Lesney Major & Accessory Pack Empty Boxes**, M-9 Inter State Double Freighter, No.2 York Freightmaster, No.7 Cattle Truck, No.8 Petrol Tanker, No.1, Accessory Pack No.3 Garage, No.4 Road Signs, F-G (7) £50-70

200. **Matchbox Lesney 1-75 Series**, thirteen models including 7 Ford Anglia, 32 Jaguar E-Type, 25 Volkswagen, 44 Rolls Royce Phantom V, 34 Volkswagen Camping Car and others, in original boxes P-G, majority playworn or with repainting/detailing, boxes F-VG (13) £80-120



201. **Matchbox Lesney 1-75 Series Empty Boxes**, type C boxes including 39 Pontiac Convertible, 15 Atlantic Prime Mover, 14 Lomas Ambulance, 12 Land Rover and others, G-VG (7) £50-70

202. **Matchbox Lesney 1-75 Series Cars**, 22b Vauxhall Cresta, light metallic brown upper, blue-green side panels, GPW, 17c Austin FX3 Taxi, GPW, 27c Cadillac Sixty Special, SPW, 29b Austin Cambridge, SPW, 19c Aston Martin Racer, RN19, in original boxes, VG-E, 22b hook damaged, boxes F-VG (5) £80-120

203. **Matchbox Lesney 1-75 Series**, mainly commercial and military vehicles including 27 Bedford Low Loader, 56 London Trolley Bus, black poles, 69 Nestles Van, 9 Fire Escape, 68 Austin Radio Truck and many others, in original boxes, P-G, most playworn, some missing parts, boxes P-F (21) £100-150

204. **Matchbox Lesney 1-75 Series**, mainly cars including 22b Vauxhall Cresta, pale pink body, GPW, 65 3.4 Litre Jaguar, 75 Ford Thunderbird, 7 Ford Anglia, 45 Vauxhall Victor, 32 Jaguar XK140, 70 Ford Thames Estate Car, in original boxes with forty loose playworn Matchbox & Morestone models, P-VG, some repainted, boxes P-VG (47) £80-120



205. **Matchbox Lesney 1-75 Series**, 34 VW Camping Car, GPW, 73 RAF Pressure Refueler, 48 Sports Boat & Trailer, 71 Army Water Truck, 48 Meteor Sports Boats & Trailer, in original boxes, G-E, boxes P-VG (5) £60-80

206. **Matchbox Lesney 1-75 Series**, 13 Thames Trader Wreck Truck, GPW, 21 Commer Milk Delivery Truck, SPW, 40 Leyland Long Distance Coach, 30 German Crane, 14 Lomas Ambulance, SPW, in original type C boxes, VG-E, boxes P-VG (5) £80-120



207. **Matchbox Lesney 1-75 Series**, 10 Foden Sugar Container, GPW, 26 Foden Cement Mixer, BPW, 5 Routemaster Bus, 'Player's Please', GPW, 23 Bluebird Caravan, GPW, 9 Merryweather Marquis Fire Engine, GPW, in original boxes, VG-E, boxes P-G (5) £60-80

208. **1st Series Matchbox Models Of Yesteryear**, Y-1, Y-2 (2), Y-3 (3), Y-4 (2), Y-5, Y-6, Y-7, Y-9 (4), Y-11 (2), Y-12, Y-13, Y-14, in original boxes, F-E, boxes P-VG (20) £80-120

209. **Matchbox Accessory Pack MG1a Service Station & Showroom**, yellow base and roof sign, red building, in original box, E, box G, stained £40-60



210. **1st Series Loose Matchbox Models Of Yesteryear**, Y-1 (5), Y-2 (6), Y-3 (2), Y-4 (5), Y-5 (4), Y-6 (5), Y-7 (2), Y-8 (7), Y-9 (8), Y-10 (3), Y-11 (4), Y-12 (5), Y-13 (5), Y-14 (4) and 2nd Series Y-6 (5), G-E (70) £200-300

211. **Late Issue Matchbox Superfast**, including 42 T-Bird, 51 Pontiac Firebird SE, 50 Harley Davidson, 75 Helicopter, 52 BMW M1, 16 Pontiac, 8 Rover 3500, 2 S-2 Jet and eight others, in original boxes, E, boxes F-E (16) £80-120



212. **Matchbox Superfast Motorcycles**, 18 Hondarora (3), first yellow, brown rider, second green, tan rider, third red, 50 Harley Davidson (2), first dark bronze, second light gold, 33 Police Motorcyclist (3), all with wheel and label variations, in original boxes, E, boxes G-E (8) £60-80

213. **Matchbox Superfast Rolamatics**, including 20 Police Patrol Range Rover (3), 35 Fandango (2), 16 Badger, 57 Wild Life Truck (2), 67 Hot Rocker, 47 Beach Hopper and others, in original boxes, E, all duplicates are differing variations, boxes G-E (16) £80-120



214. **Matchbox Superfast**, including 4 Gruesome Twosome, 2 Jeep Hot Rod, 74 Toe Joe, 60 Lotus Super Seven, 65 Saab Sonnett II, 44 Boss Mustang, 40 Guildsman 1 and others, in original boxes, E, boxes F-E (16) £80-120

215. **Matchbox Superfast Construction Vehicles**, 26 Site Dumper (3), 32 Excavator, 37 Skip Truck (2), 49 Crane Truck (3), 29 Tractor Shovel (3), 23 Atlas Truck (2), 19 Peterbilt Cement Truck, 19 Cement Truck, in original boxes, E, all duplicates are differing variations, boxes G-E (16) £80-120

216. **Matchbox Superfast**, including 21 Rod Roller, 61 Blue Shark, 9 AMX Javelin, 3 Monteverdi Hai, 75 Carabo, 51 Citroen SM, 59 Fire Chief Car and others, in original boxes, E, boxes F-VG (16) £80-120



217. **Matchbox Superfast Late Issue Cars**, including 59 Porsche 928, 25 Audi Quattro, 34 Chevy Pro Stocker, 47 Jaguar SS100, 16 Pontiac, 12 Citroen CX, 55 Ford Cortina and others, in original boxes, E, boxes VG-E (16) £80-120

218. **Matchbox Superfast**, including 30 Beach Buggy, 37 Soopa Coopa, 21 Rod Roller, 25 Mod Tractor, 62 Renault 17TL, 4 Gruesome Twosome and others, in original boxes, E, boxes F-E (16) £80-120

219. **Matchbox Superfast Emergency Service Vehicles**, including 57 Carmichael Rescue Vehicle, 64 Fire Chief, 22 Blaze Buster (2), 41 Ambulance (2), 10 Plymouth Police Car (2) and others, in original boxes, E, all duplicates are differing variations, boxes G-E (16) £80-120

220. **Matchbox Superfast Luxury Cars**, 3 Porsche Turbo (4), 70 Ferrari, 39 Rolls-Royce, 6 Mercedes Tourer, 68 Porsche 910, 47 Jaguar SS100 (2) and others, in original boxes, E, boxes G-E (16) £80-120



221. **Matchbox Superfast**, including 32 Maserati Bora, 51 Citroen SM, 54 Capri, 45 Ford Group 6, 11 Flying Bug, 13 Baja Buggy, 2 Jeep Hot Rod and others, in original boxes, E, boxes F-VG (16) £80-120

222. **Matchbox Superfast Commercial Vehicles**, including 63 Freeway Gas Tanker (2), 66 Ford Transit, 36 Refuse Truck (2), 42 Mercedes Container Truck (4) and others, in original boxes, E, all duplicates are differing variations, boxes G-E (16) £80-120

223. **Matchbox Superfast Racing & Sports Cars**, including 9 Ford RS.2000, 19 Road Dragster, 62 Chevrolet Corvette, 74 Fiat Abarth, 64 Slingshot and others, in original boxes, E, boxes F-E (16) £80-120

224. **Matchbox Superfast**, including 30 Beach Buggy, 72 Hovercraft, 34 Vantastic, 7 VW Golf, 21 Renault 5TL, 55 Hellraiser, 14 Mini Ha-Ha and others, in original boxes, E, boxes F-E (16) £80-120



225. Matchbox Superfast Late Issue Cars, including 1 Dodge Challenger, 4 57' Chevy, 67 Datsun 260-Z (2), 55 Ford Cortina (2), 12 Citroen CX (2) and others, in original boxes, E, all duplicates are differing variations, boxes F-VG (16) £80-120

226. Matchbox Superfast, 68 Cosmobile, 59 Planet Scout, 68 Chevrolet Van (3), 4 Pontiac Firebird, 53 CJ-6 Jeep (2), 4 Pontiac Firebird, 62 Renault 17TL, 9 AMX Javelin and others, in original boxes, VG-E, all duplicates are differing variations, boxes F-VG (16) £80-120



227. Late-Issue Matchbox Superfast, including 53 Flareside Pick-Up, 35 Zoo Truck, 63 4x4 Open Back Truck, 5 4x4 Jeep, 75 Helicopter, 61 Peterbilt Wrecker, 66 Tyrone Malone Superboss and others, in original boxes, E, boxes VG-E (16) £80-120

228. Matchbox Superfast Military & Aircraft, including 38 Armoured Jeep, 28 Stoa, 32 Field Gun (2), 54 Personnel Carrier (2), 2 S-2 Jet and others, in original boxes, E, boxes F-E (13) £60-80

229. Matchbox Superfast Scarce Variations, 20 Lamborghini, yellow body, 64 Slingshot, blue-green body, TN9, 60 Holden Pick-Up, cream body, 'Superbike' labels, 9 AMX Javelin, metallic dark green body, 61 Wreck Truck, yellow body, red jibs and hooks, 9 Ford RS.2000, dark green body, 'Seagull' labels, in original boxes, E, F-VG (6) £60-80

230. Matchbox Superfast, including 65 Airport Coach (4), 31 Caravan (3), 61 Wreck Truck, 34 Vantastic, 35 Fandango, 53 CJ-6 Jeep (2), 28 Lincoln Continental and others, in original boxes, E, all duplicates are differing variations, boxes F-E (16) £80-120



231. 30+ Matchbox Superfast, including 61 Blue Shark, 57 Wildlife Truck, 59 Planet Scout, 5 Lotus Europa, 33 Datsun 126X and many others, F-VG, boxes P-F (30+) £80-120

232. Matchbox Superfast Scarce Variations, 60 Holden Pick-Up, red body, '500' label, 67 Hot Rocker, red body, 7 VW Golf, yellow body, 9 Ford RS.2000, blue body, 'Phantom' label, 64 Slingshot (2), both blue-green body, one RN9, one RN3, 9 AMX Javelin, metallic dark green body, in original boxes, VG-E, boxes G-E (7) £60-80

233. Matchbox Superfast Construction Vehicles, including 15 Fork Lift Truck, 48 Sambroon Jacklift, 72 Bomag, 49 Crane Truck, 58 Faun Dump Truck and others, in original boxes, E, boxes G-E (10) £50-70

234. Matchbox Superfast, including 40 Horsebox (2), 71 Cattle Truck (2), 24 Diesel Shunter (3), 47 Pannier Loco, 46 Ford Tractor (2) and others, in original boxes, VG-E, boxes F-E (18) £60-80

235. 140+ Matchbox Superfast Empty Boxes, including 7 VW Golf (4), 10 Plymouth Police Car (4), 18 Hondarora (3), 19 Peterbilt Cement Truck (2), 24 Diesel Shunter (5), 26 Cable Truck (2), 35 Zoo Truck (2) and many others, F-E (140+) £300-500



236. A 1960s Matchbox 1-75 Series Shop Display Stand, of wire rod construction with removable pictorial metal header depicting various cars and vehicles from the 1-75 Series and early King-Size Series, F, sign would benefit from cleaning, a few wire rods are loose and held with wire £100-150

237. A Matchbox Superfast DS-3 PVC Wall Display Unit, with 'Matchbox 75 Superfast, Rolamatics, Streakers' advertising, G, slight discolouration £50-70



238. A Matchbox Superfast DS-3 PVC Wall Display Unit, with DS-1 Revolving Counter Unit and Metal Frame Display Unit, F, plastic yellowed (3) £60-80

239. Matchbox Catalogues & Books, including 1970, 1972, 1973, 1974, 1976, 1978-1989, 1983 (25), Collecting Matchbox Diecast Toys by McGimpsey/Orr, 1981-1983 Retailers Catalogues and other items, P-VG (50) £60-80

240. Loose Matchbox Lesney 1-75 Series, including 25 Volkswagen Sedan, GPW, 66 Citroen DS19, GPW, 44 Rolls Royce Silver Cloud, SPW, 33 Ford Zodiac, metallic mauve, orange panels, SPW, 63 Service Ambulance and others, with Ingap (4), MOY (2), Accessory Pack (3), F-E, one repainted (30+) £80-120

241. **Loose Matchbox Lesney 1-75 Series**, including 32 Jaguar E Type, grey tyres, 59 Ford Thames Singer Van, GPW, 56 London Trolley Bus and others, with Accessory Pack Garage, Home Stores, Car Transporter, Major Pack BP Tanker and other items, P-VG, some repainting (40+) £80-120



242. **Early-Issue Matchbox Superfast**, including 53 Ford Zodiac, 27 Mercedes 230 SL, 67 VW 1600 TL, 69 Rolls Royce Silver Shadow, 72 Standard Jeep, 14 Iso Grifo, 45 Ford Group 6, 5 Lotus Europa, 74 Daimler Bus, in original boxes, E, boxes G-VG, 74 in earlier series box (9) £80-120

243. **Matchbox Lesney 1-75 Series**, 31 American Ford Station Wagon, 33 Ford Zodiac, 9 Dennis Fire Escape, 41 Jaguar D-Type, 6 Quarry Truck, 14 Ambulance, 11 ERF Road Tanker, 13 Wreck Truck, all MW, in original boxes, VG-E, 11 and 13 repainted, boxes P-G (8) £100-150

Spot-On

244. **Tri-ang Spot-On Diecast**, 122 United Dairies Milk Float, 118 BMW Isetta, 211 Austin Seven, 287 Hillman Minx 1600, 279 MG Midget, P-VG (5) £60-80



245. **A Tri-ang Spot-On 212 Car, Dinghy & Trailer Set**, comprising 165 Vauxhall Cresta, light blue body, 135 GP Dinghy, grey/white, light blue Trailer, in original window box, G-VG, box F, cellophane damaged £80-120

246. **Tri-ang Spot-On Sports Car Pair**, 281 M.G Midget MkII, red body, white interior, brown plastic driver, flat spun hubs, 104 MGA Sports Car, red body, grey interior, flat spun hubs, VG-E, 281 front number plate replaced (2) £100-150

Buyers Premium: 17.5% plus Value Added Tax making a total of 21% of the Hammer Price

Internet Buyers Premium: 20.5% plus Value Added Tax making a total of 24.6% of the Hammer Price

Britains Motorcycles



247. **Britains No.9685 Lambretta Scooter & Riders**, white/blue scooter, in original box, E, box G-VG £60-80

248. **Two Britains No.9650 Speedway Motorcycle Sets**, one set with blue, white, yellow and red riders, the other with orange, green, brown and blue riders, in original boxes, E, boxes F-G (2) £60-80

249. **Britains No.9694 Afrika Korps Dispatch Rider**, No.9672 British Despatch Rider, No.9682 U.S Army Dispatch Rider, in original boxes, E, boxes F-VG (3) £60-80

250. **Britains No.9674 Chopper Trike With Canopy**, another similar example in differing colours, No.9677 Long Fork Chopper, another similar example in bubble pack, E, boxes G, bubble cracked (4) £60-80



251. **Britains Racing Motorcycles**, No.9678 MV Agusta, No.9671 Racing Norton, No.9683 Drag Racer, No.9696 BMW, in original boxes, VG-E, boxes F-VG (4) £60-80

252. **Britains Police Motorcycles**, No.9695 BMW Policeman, No.9673 Norton 850cc Police Patrolman, No.9697 Police Patrolman with Loud Hailer, in original boxes, E, boxes VG (3) £60-80

253. **Britains No.9691 Greeves Challenger**, No.9683 Drag Racing Machine, No.9678 MV Agusta, No.9671 Norton 850cc Racing Bike, in original boxes, VG-E, boxes P-VG (4) £60-80

254. **Britains No.9699 BMW Racing Combination**, No.9683 Drag Racer, No.9652 3 Racing Motorcycles Set, in original boxes, E, boxes G-VG (3) £60-80

255. **Britains Military Motorcycles**, No.9698 Dispatch Rider, No.9694 Afrika Korps Dispatch Rider, No.9780 German Half Track Motorcycle, in original boxes, E, boxes F-G (3) £60-80

256. **Britains No.9697 Police Patrolman With Loud Hailer**, No.9692 U.S Sheriff Harley Davidson, No.9673 Police Patrolman Norton 850cc, in original boxes, VG-E, boxes F-G (3) £60-80



257. **Britains No.9687 Honda Motorcycle**, No.9689 Harley Davidson, No.9693 Honda Benly, No.9690 Triumph Thunderbird, No.9692 Greeves Challenger, in original boxes, G-E, Greeves kick stand broken, boxes F-VG (5) £80-120

258. **1980s Britains Motorcycles**, No.9654 MV Agusta (2) and Norton 850cc (2), in differing plated finishes, No.9696 BMW with civilian, in original boxes, VG-E, boxes G-VG (5) £40-60

259. **Britains No.9666 Three Motorcycles**, comprising Greeves Challenger, U.S Sheriff Harley Davidson, BMW, No.9692 U.S Sheriff Harley Davidson, No.9699 BMW Racing Combination, in original boxes, VG-E, boxes F-VG, 9666 cellophane replaced, some tape repair (3) £60-80



260. **Britains No.9698 Dispatch Rider**, No.9694 Afrika Korps Dispatch Rider, No.9673 Police Patrolman, No.9692 U.S Sheriff Harley Davidson, in original boxes, G-E, boxes F-VG (4) £60-80

261. **Britains No.9684 Speedway Motorcycles**, No.9699 BMW Racing Combination, No.9652 3 Racing Motorcycles, No.9674 Chopper Trike With Canopy, No.9691 Greeves Challenger, in original boxes, G-E, 9674 lacks one side light, 9691 lacks one racing number, boxes F-VG, 9691 cellophane replaced (5) £80-120

262. **Britains & Other Motorcycles**, including Lead #199 Motorcycle & Machine Gun Corps, Dispatch Rider, Deetail Series Drag Racer, BMW, Honda Benly, German Motorcycle Combination (2), Morestone AA Motorcycle Patrol and others, P-VG, Morestone windscreen plastic replaced (16) £80-120

263. **Britains & Other Catalogues/Leaflets**, including 1967, 1968, 1969 (2), 1970, 1971, 1976, 1977, 1978 (2), 1979, 1983 and others, F-E (16) £30-50

Fire Engine Collectables



264. **A Dinky Toys 955 Fire Engine With Extending Ladder**, 956 Turntable Fire Escape, 259 Fire Engine, in original boxes, VG-E, boxes F-VG (3) £60-80

265. **1970s Dinky Toy Fire Engines**, 266 E.R.F Fire Tender (3), two variations, 263 Airport Fire Rescue Tender, 384 Convoy Fire Rescue Truck, 267 Paramedic Truck, in original boxes, VG-E, 267 lacks figures, boxes G-VG (6) £80-120

266. **A Dinky Toys 286 Ford Transit Fire Appliance**, 195 Fire Chief's Car, metallic red body, 276 Airport Fire Tender, 282 Land Rover Fire Appliance, in original boxes, VG-E, boxes G-VG (4) £60-80

267. **Dinky Toys 410 Bedford Van**, various fire related John Gay Code 2 models, in original boxes, E, boxes G-E (8) £60-80



268. **A Dinky Toys 956 Turntable Fire Escape**, 955 Fire Engine With Extending Ladder, 195 Fire Chief's Car, in original boxes, VG-E, boxes G-E (3) £60-80

269. **A Dinky Toys 285 Merryweather Marquis Fire Tender**, 955 Fire Engine With Extending Ladder, 956 Turntable Fire Escape, in original boxes, VG-E, boxes F-VG (3) £60-80

270. **1980s-90s Export Issue Corgi Toys**, C64 Les Pompiers, C61 Feuerwehr Set, 356 Sierra 'Brandchef', C541/2 Sierra 'Notruf 112', 457/2 Rancho 'Sapeurs Pompiers', 284 Mercedes 'Notruf 112' and others, in original boxes, E, boxes G-VG (11) £80-120

271. **Roxley/Smith White Metal Models**, Leyland DAF Community Fire Appliance, Leyland-DAF Sherpa Army Fire Service, Leyland Sherpa 200 Utility Van West Midland F.B, Ford Transit Van Highland F.B, Leyland DAF 400 Fire Appliance and four others, in original boxes, VG-E, boxes G (9) £80-120



272. **Asam 1/48 White Metal Models**, FB3 Dennis F12 Pump Escape 'Surrey F.B.', FB3 Dennis F12 Pump Escape 'Kent F.B.', FB6 Dennis Rolls Royce F12 Water Tender 'Wiltshire F.B.', in original boxes, E, plain boxes G (3) £80-120

273. **Asam 1/48 White Metal Models**, FB8B Volvo Saxon Water Tender MK2 'London F.B.', FB14 Dennis F109 Rolls-Royce Water Tender 'London F.B.', FB8 Volvo FL6.14 Water Tender 'London F.B.', in original plain boxes, E, boxes G (3) £80-120

274. **Asam 1/48 White Metal Models**, FB9 Volvo FL6.14 Carmichael Fire Rescue Unit Tender 'London F.B.', FB10 Volvo FL6.14 Area Fire Control Unit 'London F.B.', FB8 Volvo FL6 Water Tender 'London F.B.', in original plain boxes, E, boxes G (3) £80-120



275. **Ashton Models**, No.AH29 1986 Amphibious Fire Apparatus "Tampa" Florida, No.AH13 1950 Mack Pumper "Chambersburg" 70's design, No.AH12 1950 Mack 1,000 gal Pumper "Lexington" MA, in original boxes, E, boxes VG (3) £80-120

276. **Ashton Models**, No.AH25 1951 FWD Type F50T Pumper "Cedarburg" WI, No.AH30 1953 Mack Pumper "Centerport" L.I.N.Y., No.AH16 1947 Mack Pumper "Boston" Engine 25, in original boxes, E, boxes VG (3) £80-120



277. **A Corgi Juniors 3021 Emergency 999 Gift Set**, comprising Land Rover Wrecker, Mercedes Bus with black scorch marks, ERF Fire Tender, Range Rover Police, Ford Capri Fire Chief, Binz Ambulance, traffic cones, signs and figures, in original box, E, box G-VG £60-80

278. **Fire Service Matchbox Superfast**, including 57 Land Rover Fire Truck, 22 Blaze Buster, 35 Merryweather Fire Engine (4), 59 Fire Chief Car (3) and others, in original boxes, VG-E, boxes G-VG (11) £60-80

279. **Matchbox Lesney 1-75 Series Fire Service Vehicles**, 9a Dennis Fire Escape, 9c Merryweather Marquis, 63b Alvis Fire Fighting Crash Tender, 59b Ford Fairlane Fire Chief, 29c Fire Pumper Truck, in original boxes, VG-E, boxes F-VG (5) £60-80



280. **A Taylor & Barrett Fire Engine & Escape**, red body with separate silver Rolls grille, red hubs with white tyres, three seated firemen, driver and removable ladder escape assembly, in original box, VG, driver with differing paint style, box F-G £200-300

281. **A Taylor & Barrett Fire Engine & Escape**, red body with separate silver Rolls grille, red all metal wheels, seated firemen, driver and removable ladder escape assembly, VG, possible restoration, firemen with differing paint styles £80-120

282. **A Taylor & Barrett Fire Engine & Escape**, red body with separate silver Rolls grille, red all metal wheels, removable ladder escape assembly, VG, discolouration to windscreen £80-120

283. **Ashton Models**, No.AH22 1927 Ahrens-Fox Type C14 Chemical Pumper "Bristol" PA, No.AH35 1921 Ahrens-Fox Model JM4 Piston Pumper "Harrisburg", No.AH15 1923 Ahrens-Fox Type MS4 Piston Pumper "Syracuse" N.Y, in original boxes, E, boxes VG (3) £60-80

284. **Ashton Models**, No.AH7 1923 Ahrens-Fox Type NS4 Piston Pumper "Pittsburgh", No.AH33 1923 Ahrens-Fox Type K-17 City Service Truck "Cincinnati", No.AH27 1921 Ahrens-Fox Model J Piston Pumper "Cincinnati", in original boxes, E, boxes VG (3) £60-80



285. **Ashton Models**, No.AH19A Ford Pick-Up "Hudson Fire Dept.", No.AH20 1949 Mack Closed Cab Pumper "Chicago", No.AH33 1923 Ahrens-Fox Type K-17 City Service Truck "Cincinnati", in original boxes, E, boxes VG (3) £60-80

286. **Ashton Models**, No.AH38 1952 Mack 750 G.P.M Pumper "Hanover" PA, No.8 Ahrens-Fox and another similar, in original boxes, E, boxes G-VG (3) £60-80

287. **Conrad Scale Model Fire Service Vehicles**, including No.5507 Airport Fire Rescue Truck, No.5503 E-One 110' Aerial Ladder Truck, No.5509 LTI 100' Tower Ladder Platform, No.1019 American LaFrance Pumper and others, in original boxes, E, boxes F-VG, one re-labelled (12) £150-250

288. **Metosul (Portugal) Fire Service Vehicles**, Citroen DS19, Volkswagen, Mercedes Benz 1113 Tanker and Covered Truck, in original boxes, VG-E, boxes VG (4) £60-80

289. **Japanese Diecast Fire Engines**, including Tomica Dandy 002 Hino Aerial Ladder Fire Truck, 045 Izuzu TXD23F Fire Engine, 005, 025, 037, DE-005 (2), DE-008, DE-025, Shinsei Mini Power (2), Long Tomica (2), Diapet, Grip Zechin (2), Tomica Common, Foreign and Domestic series, in original boxes, G-E, 045 lacks figure, boxes P-VG (26) £80-120



290. **Corgi Major Toys 1127 Simon Snorkel Fire Engine**, 1118 Chubb Pathfinder Airport Fire Service Unit, 1143 American LaFrance Aerial Rescue Truck, 439 Chevrolet Fire Chief, in original boxes, VG-E, boxes F-VG (4) £60-80

291. **Asam 1/48 White Metal Models**, FW21 Super Pumper Hose Tender Tractor, T226F Super Pumper Pump Artic Trailer, F163C Super Pumper Satellite Pump, in original plain boxes, E, boxes VG (3) £80-120



292. **Asam 1/48 White Metal Models**, FB17 Dennis F131 Wheeled Escape 'Fulham', FB2 Dennis F12 Rolls Pump Escape 'London F.B', FB15 Dennis F109 Pump Escape 'Sutton', in original plain boxes, E, boxes VG (3) £80-120



293. **Asam 1/48 White Metal Models**, FB17 Dennis F131 Wheeled Escape 'Fulham', FB2 Dennis F12 Rolls Pump Escape 'London F.B', FB15 Dennis F109 Pump Escape 'Sutton', in original plain boxes, E, boxes VG (3) £80-120

294. **Asam 1/48 White Metal Models**, F163C Super Pumper Satellite Pump No.3, F163B Satellite Pumper No.2, FP21 Super Pumper Pump Artic Tractor, T227F Super Pumper Hose Pipe Artic, in original plain boxes, E, boxes VG (4) £80-120

295. **CEF Replex 1/43 Diecast Fire Engine Models**, Ref.169 EPA 30 S Ladder Truck, Ref.373 EPA 30 S 2nd Generation Ladder Truck, Magirus 1925 Fire Engine, Ref.108 Sides S 2000 Heavy Foam Crash Tender, similar model in differing livery, Ref.110 and Ref.116, in original boxes, VG-E, boxes G (6) £80-120



296. **Dinky Toy Code 3 Fire Service Vehicles**, all adapted and refinished Dinky Toy Bedford's with detachable trailers and ladders, three National Fire Service, one Auxiliary Fire Service, VG (4) £50-70

297. **CEF Replex 1/43 Diecast Fire Engine Models**, Ref.151 Mack Fire Engine, Ref.146, Ref.140, three others, in original boxes and two loose examples, VG-E, boxes VG (8) £80-120

298. **Asam 1/48 White Metal Models**, Mack F Tractor Unit with Low Loader Trailer 'Fire Transport' 'L.A Fire Dept.', Mack F Tractor & Tanker Trailer 'Pennington Fire Dept.', in original plain boxes, E, boxes VG (2) £80-120

299. **RSH Fire Models**, resin and white metal construction, T17 Carmichael Commando Rescue Tender 'Cleveland County', T16 Carmichael Commando Rapid Intervention Vehicle 'Newcastle Airport', in original boxes, E, one mirror loose but present, boxes VG (2) £60-80



300. **RSH Fire Models**, resin and white metal construction, T17 Carmichael Commando Rescue Tender 'Hereford & Worcester', T16 Carmichael Commando Rapid Intervention Vehicle 'Birmingham Airport', in original boxes, E, boxes VG (2) £60-80

301. **German Diecast Fire Service Vehicles**, Marklin RAK Series 1807 VW Variant 1600, Gama Mini 9575, 9123, 9487, 912, Schuco 1:66 Audi 80, Ford Transit, VW 411, Siku 1617 Ford Granada, in original boxes, VG-E, boxes F-VG (9) £60-80



302. **Conrad Scale Model Fire Service Vehicles**, No.5512 Falcon Tank Fire-Fighting Vehicle, No.5501 Rosenbauer Air Crash Fire Rescue Vehicle, No.3191 MAN16.192 F-KO and others, in original boxes, VG-E, boxes F-VG (12) £150-250

303. **Ashton Models**, No.AH40 1924 Ahrens-Fox "Clifton" Aerial Ladder Truck, Gold Collection 1950 Mack, AH40 Ahrens-Fox 75ft Aerial Trailer with Air Hoist, in original boxes, E, boxes VG (3) £60-80

304. **Asam 1/48 White Metal Models**, FB5 Austin K6 CO2 Unit Airfield Crash Appliance RAF, FC95C Scammell Nubian 4x4 Carmichael Airport Crash Tender, International/HME Pumper City Of Los Angeles, in original plain boxes, E, boxes G (3) £80-120



305. **Asam 1/48 White Metal Models**, FW47 Peterbilt 6x4 Fire Water Tanker City Of Los Angeles, Peterbilt Fire Dept. Water Tanker Elmira Fire Dept., FP149 Mack US R600 6x4 Fire Pumper & Tanker F.D.N.Y, in original plain boxes, E, Elmira with minor chrome loss to grille, boxes G (3) £60-80

306. **Asam 1/48 White Metal Models**, FP149 Mack R600 6x4 New Cab Fire Pumper, No.3, FB9 Volvo FL6.14 Carmichael Fire Rescue Unit Tender Mk1, FB10 Volvo FL6.14 De-Mountable Pod Mk2 Area Fire Control Unit, in original plain boxes, E, boxes VG (3) £80-120

307. **Asam 1/48 White Metal Models**, Mack R600 6x4 Emergency Fire Rescue Unit, FC95 Scammell Nubian 4x4 Carmichael Crash Tender RAF, FB9 Volvo FL6.14 Carmichael Fire Rescue Unit Tender Mk1, FC95C Scammell Nubian 4x4 Carmichael Crash Tender Navy, original plain boxes, E, boxes VG (4) £80-120

308. **Asam 1/48 White Metal Models**, RA135 Leyland-DAF 60 4x2 Box Van, Mack F 1974 Wrecker Truck, FP149 Mack Pumper Tanker R600 6x4, Leyland T45 Roadrunner, in original plain boxes, VG-E, Wrecker cab repaired, boxes VG (4) £80-120



309. **Asam 1/48 White Metal Models**, WH99 Scammell S24 6x6 Heavy Rescue Crash Unit Somerset FB, WH99 Scammell S24 6x6 Heavy Rescue Crash Unit Essex Fire & Rescue, FB8B Volvo Saxon FL6.14 Water Tender, GMC CCKW 353 Soft Top CO2 Airfield Unit, in original plain boxes, VG-E, Somerset Crash Unit repaired, boxes VG (4) £80-120



310. Asam 1/48 White Metal Models, GMC CCKW 3535 Hard Top Airfield Foam Tender, O2M GMC CCKW LWB Open Recovery Truck, O2N GMC CCKW 3535 LWB Holmes Wrecker Truck HT, O2L GMC CCKW 353 LWB Cargo Recovery Truck HT, in original boxes, E, boxes VG (4) £80-120

311. Asam 1/48 White Metal Models, O2P GMC CCKW 353 SWB Atlas Crane Truck HT, FC95C Scammell Super Nubian Carmichael 4x4 Crash Tender, FB4 Austin K6 Foam Tender, FB5 Austin K6 CO2 Fire Tender, in original plain boxes, E, boxes VG (4) £80-120

312. Asam 1/48 White Metal Models, Bedford RS Holmes Crane Crash Unit, Bedford RS CO2 Airfield Crash Truck, Bedford RS Airfield Crash Control Truck, in original plain boxes, E, boxes VG (3) £60-80

313. Hobbytown/Solido Fire Service Vehicles, Mack "R" Rescue (3), Baltimore, New York and Newark, Maximum S Pumper (2), Pennington and Unlettered, in original boxes, E, boxes VG (5) £60-80



314. Asam 1/48 White Metal Models, FB3 Dennis Rolls-Royce F12 Pump Escape, FB15 Dennis F109 Rolls-Royce Pump Escape, Dennis F131 Rolls-Royce Water Tender With Side Mounted Pump H31, FB17 Dennis F131 Rolls-Royce Pump Escape H31, in original plain boxes, E, boxes VG (4) £80-120

315. Fire Engine White Metal & Resin Kits, RSH Fire Model T14 Green Goddess (2), T16 Carmichael Commando Rapid Intervention Vehicle, T12 Renault Premier Secours, T17 Carmichael Commando Rescue Tender (2), in original boxes, unchecked for completeness, boxes VG (6) £60-80



316. RSH Fire Models, resin and white metal construction, T14 Green Goddess 'Birmingham Airport', similar model 'Auxiliary Fire Service', in original boxes, E, boxes VG (2) £60-80

317. RSH Fire Models, resin and white metal construction, T14 Green Goddess 'West Midlands', similar model 'Army Fire Service', in original boxes, E, AFS with wing mirror loose but present, boxes VG (2) £60-80

318. Asam 1/48 White Metal Models, Dennis F131 Rolls-Royce Water Tender, FB7 Dennis Rolls-Royce F12 Water Tender A23, Dennis F109 Rolls-Royce Water Tender H38, FW149 Mack R600 6x4 Fire Water Tanker, Dennis SS131 Water Tender London F.B, in original plain boxes, E, boxes VG (5) £80-120

319. Don Mills Models, Maxim O/C Pumper, Maxim Open Cab Pumper #028, Rescue #5, in original boxes, E, boxes VG (3) £50-70



320. Asam 1/48 White Metal Models, FC122 Unipower 4x4 Carmichael Airport Tender, FC95A Scammell Nubian 4x4 Angus Crash Tender, FC123 Unipower Rosenbauer 6x6 Carmichael, FC122 Unipower Carmichael 4x4 Airport Crash Tender, in original plain boxes, E, boxes VG (4) £80-120

321. Roxley/Smith White Metal Models, including Leyland-DAF Sherpa Personnel Carrier, 200 Utility Van, Leyland DAF 400 Community Fire Appliance, Ford Transit Panel Van and others, in original plain boxes, VG-E, a few minor damages, boxes F-VG (8) £60-80



322. Conrad/NZG/Cursor Scale Model Fire Service Vehicles, including Conrad Volvo F12 6x6 Intercooler Fire Crash Tender, E-One 95 Aerial, Hush Pumper, NZG Simba 8x8, Cursor Pathfinder 6x6 and others, in original boxes, E, boxes G-E (11) £100-150

323. Asam 1/48 White Metal Models, FC96C Nubian Carmichael 6x6 Scammell, FC122 Unipower Carmichael 4x4 Airport Crash Tender, FC31 DAF 2800 Foam Tender, FC96 Scammell Nubian 6x6 Carmichael Crash Tender, in original plain boxes, E, boxes VG (4) £80-120



324. Asam 1/48 White Metal Models, Diamond T 1948 6x4 Holmes Wrecker Fire Dept. Truck, FC123 Unipower 6x6 Rosenbauer Carmichael, FC41 Volvo F12 Foam Tender, FW82 Mack R600 6x4 Water Tanker, in original plain boxes, E, boxes VG (4) £80-120

325. Asam 1/48 White Metal Models, FW82 Mack R600 6x4 Water Tanker, FC41 Volvo F12 Foam Tender, FC123 Unipower 6x6 Rosenbauer Carmichael, Diamond T 1948 6x4 Holmes Wrecker Truck, in original plain boxes, E, boxes VG (4) £80-120

Buyers Premium: 17.5% plus Value Added Tax making a total of 21% of the Hammer Price
Internet Buyers Premium: 20.5% plus Value Added Tax making a total of 24.6% of the Hammer Price



326. Asam 1/48 White Metal Models, FC31 DAF 3300 Foam Tender, OT1 Leyland Super Beaver Fire Tanker, Dennis F12 Pump Escape Rolls-Royce, Dennis SS131 Turntable Ladder, in original plain boxes, VG-E, boxes VG (4) £60-80

327. Corgi Major Toys 1143 American LaFrance Aerial Rescue Truck, 1127 Simon Snorkel Fire Engine, 1126 Simon Snorkel and a Corgi 909 Quad Tractor Trailer & Gun, in original boxes, E, boxes F-G (4) £50-70

328. Asam Small Scale White Metal Models, Dennis F12 Rolls Royce Pump Escape, Dennis SS131 Water Tender Ladder, Dennis F108 Pump Escape, Shelvoke Drewery Water Tender Ladder, in original plain boxes, E, boxes G (4) £60-80



329. Tri-ang Spot-On Fire Dept. Land Rover & Trailer, from Gift Set 805 Fire with Tommy Spot, red Land Rover with brown plastic tilt, silver base, with red plastic Trailer on black chassis, spun hubs, VG (2) £60-80



330. Fire Service Vehicles by Various Makers, Bburago Range Rover Airport Fire Engine, HAT 149 Audi 80 GT Feuerwehr, Polistil Dodge Van Pompieri, Marx Toys Bulldog Fire Truck, Champion Saviem Fire Engine, Gamda Koor Fire Chief, NZG Mercedes Fire Lorry, in original boxes, with loose Mebetoy's Alfetta Fire Chief, G-E, boxes F-G (8) £60-80

331. British Diecast Fire Engines, including Matchbox King Size K-15 Merryweather Fire Engine, Superfast 35 Merryweather Fire Engine, cream grille and base, wide wheels, Crescent Toys No.1221 Fire Engine, Lone Star Tuf-Tots 624 Fire Engine and others, in original boxes, loose Dinky Daimler Ambulance, Lone Star Fire Engine, empty Crescent and Model Fire Service box, F-E, Budgie lacks ladder, boxes P-VG (11) £60-80

332. Asam Small Scale White Metal Models, PW714 Dennis SS Turntable Ladder, PW717 Shelvoke & Drewery Turntable Ladder, PW713 Dennis SS Hydraulic Platform, PW716 Shelvoke & Drewery Turntable Ladder, in original plain boxes, E, boxes VG (4) £60-80



333. Asam 1/48 White Metal Models, Volvo F16 6x6 Foam Tender, FB8A Volvo Saxon FL6.14 Water Tender Ladder Mk1, Volvo FL6.14 HCB Angus WRL 1994, Volvo FL6.14 HCB Angus WRT 1990, in original plain boxes, E, boxes VG (4) £60-80

334. Asam 1/48 White Metal Models, FB2 Dennis F12 Rolls-Royce Pump Escape With Rear Mounted Pump, FC123 Unipower Carmichael 6x6 Chassis, FC122 Unipower Carmichael 4x4 Chassis, Unipower 4x4 Crash Tender Carmichael Newcastle International Airport, Austin K6 Airfield Crash Tender, in original plain boxes, VG-E, K6 repaired, boxes F-VG (5) £60-80



335. Asam & Roxley/Smith White Metal Models, FC76 Scammell S26 CFR Foam Tender, Dennis F12 Water Tender, Dennis SS131 Water Tender, Dennis F108 Water Tender, Leyland DAF Sherpa 200 Utility Van, in original plain boxes, VG-E, boxes VG (5) £60-80

336. Fire Engines By Various Makers, including Sun Motor Co 104 Mercedes Benz Fire Appliance, 154 Bedford Water Tanker, DG Models Motorcycle Fire Appliance, Brooklin BRK 26a Chevrolet Fire Marshal's Truck and others, in original boxes, G-E, boxes F-VG (8) £60-80

White Metal Models

337. Pathfinder & Somerville, 1/43 white metal models, Pathfinder PFM15 Sunbeam Rapier 1962, Somerville No.117 Ford A494A Anglia Tourer, No.120A Sunbeam Talbot 90 Mk 2A, No.106 Standard Flying 12, in original boxes, E, boxes G-VG (3) £60-80



338. Western Models, 1/43 white metal models, WMS 23 1927 Sunbeam Record Car, WMS 40X 1948 Daimler Straight 8 DE36, WMS 32 1930 Bentley 6.5 Litre, WMS 29 1931 Bugatti Royale Esders Roadster, in original boxes, VG-E, WMS 29 with loose parts, boxes G (4) £60-80

339. Brooklin Models, 1/43 white metal models, BRK20x Buick Skylark, BRK 33x Phantom Corsair, BRK 12 1931 Hudson Greater 8 and three others, in original boxes, E, BRK 12 windscreen loose, boxes F-VG (6) £80-120

340. RAE Models, 1/43 white metal models, MG TD, Jaguar XK150 with Father Christmas figure, MG J2 Midget, in original boxes, E, boxes G (3) £60-80

341. Brooklin/Rob Eddie 1/43 White Metal Models, BRK.61x Chevrolet Impala, 1947 Dodge Series 21, BRK.71x Speedboat, Rob Eddie No.4x Volvo PV831 Taxi (2), in original boxes, E, boxes G-VG (5) £80-120

342. **Brooklin 1/43 White Metal Models**, BRK.41 1959 Chrysler, BRK.29 1953 Kaiser Manhattan, BRK.10 1949 Buick Roadmaster, BRK.29 1953 Kaiser Manhattan, BRK.17 1952 Studebaker Champion, in original boxes, E, Chrysler with door chip, boxes F-G (5) £60-80



343. **Brooklin 1/43 White Metal Models**, BRK.25 Pontiac Bonneville, BRK.68 1954 Chevrolet Belair, BRK.17 1952 Studebaker Champion, BRK.29a Kaiser Manhattan, in original boxes, with loose No.24a Ford Mustang, No.2a Tucker Torpedo, No.20 Buick Skylark, E, boxes P-G (7) £80-120



344. **Brooklin 1/43 White Metal Models**, BRK.174 1954 Hudson Hornet, BRK.153 1936 Terraplane, B.C 006 1937 Buick Special, P.C.04 1936 Pontiac Deluxe Six, in original boxes, E, boxes VG (4) £60-80

345. **1/43 White Metal Models**, Pathfinder PFM CC2 Borgward Isabella Coupe 1959, PFM 22 Morris Minor MM 1950, Lansdowne Models LDM 53 1936-39 MG SA Saloon, Somerville Models No.126 Volvo Jakob, in original boxes, G-E, Minor lacks front grille and one headlight, boxes G-VG (4) £40-60

346. **Hart Models 1:48 Rolls Royce Armoured Car**, factory built, HT30 CMP Chevrolet, unmade white metal kit, in plain card boxes, E, kit unchecked for completeness, boxes VG (2) £50-70

Japanese Models

Buyers Premium: 17.5% plus Value Added Tax making a total of 21% of the Hammer Price
Internet Buyers Premium: 20.5% plus Value Added Tax making a total of 24.6% of the Hammer Price



347. **Asahi Toy Co (ATC) Model Pet No.29 Hino Contessa Coupe**, maroon body, cream interior, silver trim, spun hubs, in original box, E, box VG £80-120

348. **Asahi Toy Co (ATC) Model Pet No.29 Hino Contessa Coupe**, red body, cream interior, silver trim, white wheels, chrome hubs, E, interior dropped, box G, end flap with label damage £60-80

349. **Asahi Toy Co (ATC) Model Pet No.20 Toyopet Crown Deluxe**, light metallic brown body, red interior, silver trim, spun hubs, in original box, E, box G £60-80



350. **Asahi Toy Co (ATC) Model Pet No.20 Toyopet Crown Deluxe**, light metallic blue body, red interior, silver trim, spun hubs, in original box, E, box G-VG £60-80

351. **Asahi Toy Co (ATC) Model Pet No.20 Toyopet Crown Deluxe**, black body, red interior, silver trim, spun hubs, in original box, E, box G-VG, minor graffiti to one end £80-120

352. **Asahi Toy Co (ATC) Model Pet No.7S Toyopet Corona**, metallic light green body, cream interior, silver trim, white wheels, chrome hubs, in original box, E, box G-VG, minor graffiti to one end £60-80

353. **Asahi Toy Co (ATC) Model Pet No.17 Datsun Bluebird Fancy Deluxe**, lime green body, cream interior, silver trim, flat spun hubs, in original box, E, box G £60-80

354. **Asahi Toy Co (ATC) Model Pet No.16 Prince Skyline Sports**, metallic grey body, cream interior, silver trim, flat spun hubs, in original box, E, box G £80-120



355. **Asahi Toy Co (ATC) Model Pet No.18 Isuzu Bellel**, peach lower body and boot, white upper body, cream interior, silver trim, flat spun hubs, in original box, E, box G £60-80

356. **Asahi Toy Co (ATC) Model Pet No.18 Isuzu Bellel**, two tone green body, cream interior, silver trim, flat spun hubs, in original box, E, box F £50-70

357. **Asahi Toy Co (ATC) Model Pet No.25 Datsun Bluebird**, metallic blue body, cream interior, silver trim, spun hubs, in original box, E, box VG £80-120



358. **Asahi Toy Co (ATC) Model Pet No.22 Prince Gloria Deluxe**, metallic blue body, cream interior, silver trim, spun hubs, in original box, E, a few minute chips, box G £60-80

359. **Asahi Toy Co (ATC) Model Pet No.21 Toyopet Masterline**, light metallic blue body, cream interior, silver trim, spun hubs, in original box, E, small chip at base of bonnet, box F £100-150

360. **Asahi Toy Co (ATC) Model Pet No.11S Toyopet Corona-Line**, off-white body, cream interior, silver trim, flat spun hubs, in original box, VG-E, box G, one end flap glued in place £50-70

361. **Asahi Toy Co (ATC) Model Pet No.25 Datsun Bluebird**, light metallic blue body, cream interior, silver trim, spun hubs, in original box, E, small mark to roof, box F £50-70

362. **Asahi Toy Co (ATC) Model Pet No.14 Toyota Publica**, salmon pink body, cream interior, silver trim, flat spun hubs, in original box, VG-E, box F £50-70



363. **Asahi Toy Co (ATC) Model Pet No.9S Hillman Minx**, blue lower body, grey upper, cream interior, flat spun hubs, in original box with leaflet, VG-E, slight signs of fatigue under paint, box G £50-70

364. **Asahi Toy Co (ATC) Model Pet No.18 Isuzu Bellel**, metallic blue lower body, silver upper, cream interior, silver trim, flat spun hubs, in original box, E, box P-F £50-70



365. **Asahi Toy Co (ATC) Model Pet No.19 Toyopet Sports**, metallic mauve body, cream interior, silver trim, flat spun hubs, in original box, VG, area of corrosion around bonnet edge, box F-G, with No.24 Mitsubishi Colt 1000 Deluxe, metallic red body, cream interior, silver trim, spun hubs, in original box, VG, bonnet lacks retaining clip so comes loose, box VG (2) £80-120

Various Diecast

366. **Various Diecast**, including Matchbox Thunderbirds Gold Plated Commemorative Set, Superfast 18 Field Car, 68 Porsche 910, 18 Hondarora, Pilen M.329 Seat 124 Sport Coupe, plastic Stahlberg Volvo 340 and others, in original boxes, G-E, boxes F-VG, Stahlberg with incorrect box (18) £80-120



367. **Various Diecast Empty Boxes**, Corgi Toys 412 Bedford Ambulance, 403M Bedford 'KLG Plugs' Van, 218 Aston Martin DB4, Budgie Toys No.246 Police Patrol Car, No.236 Routemaster, Spot-On No.104 MG A, Morestone No.2 RAC Motorcycle Patrol, F-VG (7) £50-70

368. **Various British Diecast**, Triang Spot-On 195 Volkswagen, Dinky Toys 199 Austin Seven Countryman, 952 Vega Major Luxury Coach, Corgi 241 Ghia L.6.4, Matchbox MOY No.6 AEC, No.7 4 Ton Leyland, in original boxes with loose Dinky Austin Atlantic, P-VG, some repainting/detailing, boxes P-G (7) £60-80

369. **Japanese Diecast**, Diapet B-47 Double Decker Hato Bus, B-41 Neoplan Bus, B-8 New Hato Bus, B-16 Mini JR Highway Bus, Tomica Dandy Nissan Diesel Big Thumb, Long Tomica L18 Super Stage Coach and others, in original boxes, G-E, some with discolouration, boxes P-VG (19) £50-70

370. **Budgie Toys No.296 Motorway Express Coach**, Matchbox Lesney 1-75 Series 58 BEA Coach, GPW, 68 Mercedes Coach, Superfast 12 Setra Coach, in original boxes, G-E, boxes P-F (4) £40-60

371. **Various Diecast**, Budgie Toys Scammell Scarab LMS, London Taxi Cab, MICA Ltd Edition Covered Wagon, USSR Gaz Volga M24-01, in original boxes, E, boxes F-E (4) £40-60

372. **NZG No.216 JCB 3CX Excavator Loader**, Sijam Pocalin 1000 Hydraulic Excavator, in original boxes, loose NZG No.163 Terex Dumper Truck, No.164 Terex 82-50 Bulldozer, No.113 Demag H51 Hydraulic Excavator, Conrad No.411 Terex Motor Scraper, F-E, Sijam with damage to railings, boxes F-VG (6) £100-150

373. **Jaguar by Dinky**, Corgi & Other Makers, Dinky 120 Jaguar E Type, red body, detachable hard top and folded hood, Corgi Toys 374 5.3 Litre V12 Jaguar, Polistil SN02 Jaguar XK-E, 21 Toy Jaguar E-Type, Mercedes Twin Pack, in original boxes, VG-E, boxes G-VG (4) £60-80



374. **A Robin Hood Toy Products Ltd Sports Coupe**, c.1946, green body, silver flash, bare metal wheels, in original box, VG-E, box F £40-60



375. **A Timpo Toys Smith's Potato Crisps Luton Van**, c.1947, dark blue body, Timpo Esso Petrol Tanker, Crescent Mosquito plane with three airmen figures, boxed Crescent Toys No.1221 Fire Engine, Lone Star Roadmaster Rolls Royce, Corgi Toys 151 Lotus Mark Eleven Le Mans Racing Car, empty Robin Hood Toy Products box, P-VG, Esso Tanker restored, Corgi Lotus lights repaired, decal replaced, boxes F-G, Lone Star cellophane replaced (10) £80-120

376. Autoart 1:18 Jaguars, 73510 Jaguar XK SS 1956 Blue, 73512 Jaguar XK SS 1956 Cream, 73561 Jaguar D Type (Short Nose) Green, in original boxes, E, boxes G, D-type cellophane damaged (3) £80-120

377. Solido Military Vehicles, including No.251 VAB 6x6, No.243 Leopard Tank, No.247 Alvis, No.237 Char PIZV, No.244 Half Track M3 and others, in original window boxes, VG-E, boxes F-VG (15) £80-120



378. Solido Military Vehicles, including No.253 General Lee, No.231 Sherman M4-A3, No.248 Char M1 41, No.240 Panhard AML 90 and others, in original window boxes, VG-E, boxes F-VG, one lacks cellophane (16) £80-120

379. 1960s-70s Solido Military Vehicles, No.240 Panhard AML90, No.203 Renault 4x4, No.225 Rocket Launcher BTR 40, No.207 Amphibian Tank PT 76, No.206 Howitzer, No.200 Combat Car M.20, No.219 Tank Destroyer, No.232 M-10 Destroyer, in original boxes, E, boxes G-VG (8) £80-120

380. 1960s-70s Solido Military Vehicles, No.211 Berliet T12 Tank Transporter, No.235 Simca Unic 4x4 Truck & Canon, No.228 Camouflaged Jagd Panther, No.236 Panther G Tank, No.222 Tiger Tank, No.204 105F Cannon, in original boxes, E, boxes F-VG (6) £80-120

381. 1960s-70s Solido Military Vehicles, No.202 Patton Tank, No.208 SU 100 Tank, No.209 AMX 30 Tank, No.205 105C Cannon, No.222 Tiger 1 Tank, No.223 AMX 13 Anti-Aircraft Tank, No.227 AMX 13 VCI, in original boxes, E, boxes F-VG (7) £60-80



382. A Minichamps 1:18 BMW 3.0 CSL Turbo Group 5 Frank Stella Art Car, in original Perspex case, VG, boot loose, lacks clip, slight loss to one decal, case VG £60-80

383. A Tekno No.910 Mercedes-Benz LP 322 Open Back Truck, red cab, black chassis, yellow back, white hubs, with No.425 Volvo FB88 'Transport Spedition' Covered Truck, grey/blue body, in original boxes, VG, boxes P-F (2) £60-80

384. A Lion Car DAF Bestelauto Van, light blue body, silver wheels, off-white interior, in original box, E, box VG-E £40-60

385. A Quiralu Porsche 356 Coupe, blue body, silver trim, flat spun hubs, white tyres, in original box, E, box G £80-120



386. A Quiralu Jaguar XK140, red body, blue interior, white tonneau, silver trim, flat spun hubs, white tyres, in original box, VG-E, box F-G £60-80

387. A Tekno No.810 Volvo Amazon, dark red body and hubs, chrome hubcaps, silver trim, with later 810 box with yellow colour spot, E, tippex number to base, box VG-E £80-120

388. Tekno No.810 Volvo 121/122S 'Polis' Car, black/white body, blue plastic roof light, detailed cast hubs, G, retouching to boot and one side, with No.821 Saab 93 Saloon, red body, white wheels, chrome hubcaps, VG-E (2) £60-80



389. Crescent Toys Racing Car Group, No.1288 Cooper-Bristol 2 Litre, dark blue body, RN2, No.1289 Gordini 2.5 Litre, pale blue body, RN14, No.1284 Mercedes-Benz 2.5 Litre, silver body, RN12, in original boxes, two with original leaflets, VG-E, 1284 fatigue to driver, boxes F-VG (3) £100-150

390. A Mercury No.27 Studebaker Golden Hawk, dark red lower body, black upper body, flat spun hubs, E £50-70

391. A Quiralu Jaguar XK140, black body, red interior, cream tonneau, flat spun hubs, Politoys-M No.529 Alfa Romeo Giulia 1600 Canguro, silver body, brown interior, VG-E, Jaguar minor retouch to tonneau (2) £40-60

392. Small Scale Diecast, including Dinky Dublo Ford Prefect, Britains Lilliput Open Sports Car, Saloon Car, Mercury No.414 Piaggio 136 Plane and others, P-VG (18) £50-70



393. Various Diecast & Models, including modern issue Corgi Chitty Chitty Bang Bang, Provence Moulage kit built K941 Toyota Celica 1994 Pike's Peak, MSMC 38E Triumph Dolomite, Lion Toys DAF STC, Tekno MSMC Scania Tractor Unit and others, in original boxes, VG-E, boxes G-E (11) £100-150

394. **Diecast Buses & Coaches,** Dinky Toys 292 Leyland Atlantean Bus, 282 Duple Roadmaster Coach, Corgi Major Toys 1120 Midland Red Motorway Express Coach, Matchbox 5 London Bus, 66 Greyhound Coach, Metosul 23 SMC Bus, in original boxes, loose French Dinky Paris Autobus, F-E, 282 repainted, 1120 some detailing, boxes P-G (7) £80-120



395. **A Danbury Mint 1:24 James Bond 007 Aston Martin DB5,** in original box with certificate, E, box G £60-80

396. **A Mebetoys A37 NSU Ro80,** metallic blue body, brown interior, Matchbox 1-75 Series 33 Ford Zephyr III, BPW, 75 Ferrari Berlinetta, in original boxes, loose Vauxhall Cresta, ERF 'Esso' Road Tanker, ERF Stake Truck, VG-E, boxes F-G (6) £60-80

397. **Various Diecast & Toys,** Marklin 8031 Magirus Mobile Crane, red body, black jib, restored Marklin Mercedes 300, unmarked 1930s diecast racing car, Tri-ang Minic tinplate clockwork Car, Schuco 3043 Varianto Sani Ambulance, F-VG (5) £60-80

398. **Crescent Toys Racing Cars,** No.1284 Mercedes Benz 2.5 Litre, No.1287 Connaught 2 Litre, No.1289 Gordini 2.5 Litre, in original boxes, loose BRM Mk2, G-VG, paint loss mainly to drivers heads, boxes G-VG (4) £80-120

399. **CIJ French Diecast, Ref.3/54** Panhard 54, grey body, in original box, loose 3/12 Mercedes 220, grey body, 3/51 Renault Fregate, dark grey body, early issue Renault 4CV, dark grey body, plain baseplate, metal wheels, F-VG, box P-F (4) £80-120

400. **A Quiralu Mercedes 300SL,** grey body, spun hubs, in original box, loose JRD Citroen 2CV, Tekno 810 Volvo Amazon, red body, grey roof, empty Norev Renault Fregate (2) and Jep Citroen DS19 boxes, VG, boxes F-VG (6) £60-80

Tinplate Toys



401. **Tri-ang Minic Tinplate Vehicles and other Tri-ang toys,** including Minic tinplate Breakdown Truck, Fire Engine 9 and one in parts), Caravan, Brewery Lorry, Watney's Barrel Lorry, Shell BP 4-wheel Tanker, Vauxhall Town Car, all in a reasonable condition and other vehicles in various states of disrepair, with, cabs, tanks, motors and other items, Tri-ang Hiways Flatbed Lorry and part of a lorry (both incomplete), Clockwork boat, Plastic / Tin Tank and Jeep, and Marx tinplate Limo, P-G, many repainted (qty) £80-120



402. **Modern Tinplate Fairground Toys,** JW Germany clockwork Swing Boats Ride, Bavarian Rocket Big wheel, Schylling Rocket Ride and Speedway Racer, MGRS China Merry Go Round, Wagner Brunn Merry Go Round, all in original boxes G-E, boxes G-VG (6) £50-70

403. **Codeg Mettoy and Tucher & Walther and other Tinplate Toys,** Codeg Cash Register with £sd levers and drawer with working bell, Mettoy Mettype Junior Typewriter, Lone Star Stampede Gun and holster, English Wild West Tinplate Hoopla and Tucher & Walther clockwork Veteran Car with driver and passenger, in original box, G- E, box G-VG (3) £40-60



404. **Seaside Spinning Tops and other Tinplate Toys,** Chad Valley 'Saucy Sal' bucket and Drum, Ohio 'Happy Sandman Spade', ACME Kaleidoscope and another English Aquascope, Lumar Yo-Yo, Chad Valley (2) and Tri-ang Spinning Tops, Kirchof and US Metal Toy Co Rattles, Reliable Tambourine, St & H six piece Tower, MFZ Music Box and English lockable Money Bucket, generally F-G (qty) £80-120

405. **Model Tinplate Fairground and other Toys,** Tucher & Walther 'Eis Plast', SY Cat Ferris Wheel (c/w requires attention), Pull back Airplane Merry Go Round, Tin a and Plastic Playland twin Rocket Merry Go Round Wire with celluloid Trapeze Doll and pull back Rocket Merry Go Round, F-G, some with fading, (6) £40-60



406. **Yoshiya tinplate clockwork High Wheel Robot,** in black, F, chest panel loose, some fading £40-60

407. **Moko Jumbo Elephant and other Circus Tinplate Toys**, Jumbo in grey and red, F, TPS Japan clockwork Elephant pulling two clowns with balls and one in a wheel, F and seal with revolving ball, with modern Clown on a Cart, G (4) £80-120



408. **Tinplate clockwork Animals**, US Zone Jumping Dog, Mettoy/Brimitoy or similar Pig, Penguin, Duck and Bear, F-G (5) £80-120



409. **Tinplate Ballerina and other Toys**, Einfalt green Ballerina with gyro function and ratchet, post war Wells-Brimitoy green tinplate Pram with four '5 x 19' Balloon Tyres with small plastic doll, Brimitoy clockwork drummer on horse and unmarked clockwork Policeman, F-VG (4) £100-140



410. **Penny Toy Horse on wheels and Charlie Chaplin style figure**, white horse on base with four wheels, marked MJ?, together with a flat figure possibly well know music hall figure from 20s and 30s with mechanisms to doff his hat, with lapel fixing to rear £40-60

Lot 411



411. **A quantity of pressed tinplate flats Farm Animals and accessories**, including Horses, Cows, Sheep, Sheepdog and other dogs, Hens, Chickens, Pigs, Rabbits, Geese, Ducks, Fencing, Gates, Trees, wheelbarrow and bench, Dove Cote and Farmer feeding chicks, probably from two or three manufacturers, believe pre and post war, all painted on one side only, together with two small lead trees without bases, most in VG condition (50+) £80-120

412. **Penny Toy Trains and larger models and Simon and Rivolet Cart**, Georg Fischer US Zone Germany 4-wheel green Locomotive No 329, Wells Brimitoy Road Roller and red/yellow 0-4-0 Engine and Simon and Rivolet Dog Cart, VG (4) £40-60



413. **Various Fairground and other clockwork Tinplate Toys**, Tucher & Walther clockwork Elephant on two circular drums, Paya two-funnel Liner on wheels, Schylling Carousel and Welby Skip Coin Bank, all in original boxes, unboxed Globe Merry Go Round, mini Chinese airplane Merry Go round, JW Germany Ferris Wheel and Boat, unmarked Airplane and Airship revolving around a Lighthouse (a little faded) and blue Tin spade, F-E, boxes G-VG (10) £60-80

414. **A Schuco Examico 4001 Car and Garage**, car in cream, F, chassis loose from body and lacks windscreen, Garage in cream and black, F, lacks handset to Telephone, some dents and roof loose in places, (2) £40-60

415. **Tri-ang Minic Tinplate Double Deck London Bus**, with repainted grey roof, friction drive, F-G, London Transport decals poor, transfers fair-good £60-80

416. **Meier and other German Penny Toy Cars**, Meier long open touring car in yellow (lacks driver and passenger), another similar car in red with no slots on seats, unmarked yellow with black detail sports car, F (3) £40-60



417. **Georg Fischer and Kellerman and other German Penny Toy Cars with drivers**, GF single seater yellow and brown sports/racing car, Kellerman two seater yellow, red and black sports car and larger unmarked yellow and orange No 32 Racing Car, F-G No 32 with number scratched on side, (3) £60-80

418. **A Bandai Tinplate GT Car Series Lotus Elan**, red body, black roof, friction drive motor, Wells Brimitoy tinplate clockwork 'Regent' Tanker, Kashiwai Lucky Toy friction drive Police Patrol VW Beetle, Sanko friction drive MG sports car, F-VG (4) £50-70

Buyers Premium: 17.5% plus Value Added Tax making a total of 21% of the Hammer Price
Internet Buyers Premium: 20.5% plus Value Added Tax making a total of 24.6% of the Hammer Price

419. **Schuco Tinplate Clockwork Oldtimers**, 1228 Opel, 1225 Mercer, 1227 Ford Coupe, 1230 Renault 6CV, 1229 Mercedes Simplex, in original boxes, VG-E, one lacks key, boxes G-VG (5) £60-80

420. **Modern Schuco & Copies**, 01017 Schuco Studio Classic Racer & Figures, 1010 Wende-Limousine, 1062 Mercedes Grand Prix Racer, Lilliput 1043 Mercedes Micro Racer, 1042 Midget Racer, in original boxes, VG-E, boxes F-VG (5) £60-80



421. **Schuco Tinplate Clockwork Examico 4001**, cream body, maroon seats, G, another similar damaged example, P, Tri-ang Minic Steam Roller, F, Scalex Maserati, green body, red seat, RN7, G (4) £40-60

422. **1993 Märklin Standard Oil Tank Truck**, #1993, tinplate clockwork model with red body, blue/green chassis, green hubs, in original box with cert and key, E, box VG, slight stain to lid £80-120



423. **A Mettoy Tinplate Clockwork Woody Station Wagon**, registration MT 3312, Tri-ang Minic clockwork Road Roller, Yone clockwork Ladybird, Tri-ang friction drive Ladybird, tinplate railway Signal and a boxed Chad Valley aluminium clockwork Remote Control Car, F-VG, Chad Valley car lacks remote, box P (6) £50-70



424. **A Schuco 2095 Tinplate Clockwork Remote Control Mercedes 190SL**, green body, red interior, black tonneau, in original box with key, steering wheel controller, cable, two wooden poles and instruction sheet, E, plastic windscreen warped, box G-VG £100-200

425. **1960s Chinese Tinplate Toys**, Internal Combustion Train, Universe Friction Rocket, Light Tank, Racer, Heavy Crane, in original boxes, E, Racer lacks hub, boxes F-VG (5) £80-120



426. **A Niedermeier Tinplate Jaguar XK120 Police Car**, 1950s friction drive model in black/white, red bonnet light, spring aerial, in original box, VG, box P-F £60-80

427. **A Tri-ang Minic 15M Petrol Tank Lorry**, scarce light blue cab, red tank, 'L.Bros' triangle decal to tank, in original box with key, E, box F-G £80-120

428. **A Tri-ang Minic 60M Pre-War Double-Deck Bus**, maroon body, stone roof, 'Ovaltine/Bovril' advertising boards, 'AYV 604' rear number plate, F, lacks one headlight, with a similar post-war example in red, 'Pedigree Prams' advertising boards, 'LBL 174' rear number plate, diecast hubs, P-F (2) £60-80

429. **A Pair of Tri-ang Minic 4M Pre-War Sports Saloons**, first with grey body, plated rounded wings, F-G, second dark blue body, plated rounded wings, petrol can, P, with one key (2) £50-70



430. **A Pair of Tri-ang Minic 17M Vauxhall Tourer's**, first with stone body, plated flared wings, G, second dark blue body, plated flared wings, F-G, with one key (2) £50-70

431. **A Tri-ang Minic 5M Pre-War Limousine**, red body, plated flared wings, F, lacks one headlight, pre-war 6M Cabriolet, brown body, plated flared wings, G, lacks two tyres, with one key (2) £60-80



432. **A Tri-ang Minic 13M Pre-War Racing Car**, red body, pink exhaust, RN5, cut out cockpit, restored 29M Traffic Control Car, 9M Streamline Saloon, dark green body, 14M Streamline Saloon, green body, P-G, 9M lacks one wheel (4) £60-80

433. **A Tri-ang Minic 2M Pre-War Ford Light Van grey body**, petrol can, 16M Caravan, maroon/stone body, 10M post-war Delivery Lorry, dark green cab, green back, G-E, with one key, 2M lacks one tyre (3) £60-80

434. **Tri-ang Minic**, including 33M pre-war Steam Roller, in original box, loose 93M O Saloon, plastic Morris Minor, empty Minic boxes, Delivery Lorry (2), Short Bonnet Shutter Van and one unlabelled, with a quantity of clockwork keys, G-E, 33M with part replaced, boxes P-F (qty) £60-80

Lot 438



435. **A Charles Rossignol Tinplate Clockwork Single Deck Paris Bus**, green lower body with yellow lining, cream upper and roof, grey 'Confort Type Sport CR' tyres, driver, 'Passy Place de l'Etoile, Madeleine Bourse' to sides, F, retouching to edges and larger roof chips, with two other small tinplate cars, one by Essdee, P-F (3) £100-150

436. **A Welsotoys 600 Series British Railways Van**, No.9/636, friction drive, red plastic cab, tinplate body, in original box, E, box G £40-60

437. **A VEB Mechanische Spielwaren Germany Tinplate Friction Drive Tram Car**, cream/orange body, blue tinplate pantograph on cream roof, small MS logo to side panels, in original box, E, box F £50-70

438. **A Brimtoy Pocketoy No.508 Bentalls Removal Van**, scarce example with dark green body, clockwork motor, black plastic wheels, in box with key, VG-E, box G, box marked for Gyro version of Removal Van £60-80

Lot 439



439. **A Brimtoy Pocketoy No.9/520 Lyons Tea Mechanical 6 Wheel Covered Lorry**, dark blue plastic cab, tinplate container, clockwork motor, black plastic wheels, in original box, VG-E, box G £50-70



440. **Michael Seidel MS Germany Tinplate Clockwork Sputnik**, 1950s tinplate globe with orbiting Sputnik and plastic flying saucer with pilot, in original box, VG, box F £50-70

441. **Glam Toy Products Tinplate 'Automatic Garage**, with spring loaded door and three cars, VG-E, Wells Brimtoy No.709 Car Transporter, P-F, Penguin Clyde Cruiser, P-F, Bayko Building Outfit No.1, P-F, in original boxes, with loose tinplate vehicles, most in need of repair, Bayko unchecked for completeness, boxes P-F (10) £60-80

442. **Tri-ang Minic 'British Road Services' Forward Control Van**, green body, red plastic hubs, Timber Lorry, Short Bonnet 'BP' Petrol Tanker, 75M Ambulance, F-G, tanker tyres perished (4) £60-80

443. **Tri-ang Minic Tinplate Clockwork Vehicles**, Double Decker Bus, Fire Engine, Jeep No.2 (2), Vauxhall Cabriolet, Vauxhall Tourer, Traffic Control Car, with Calverts Dan Dare Tooth Powder Tin containing five clockwork keys, F-G, fire engine lacks ladder, one Jeep lacks spare wheel, control car lacks roof speaker (13) £100-150

Toys

444. **Tri-ang Minic Motorway Vehicles and Accessories**, including M1542 Jaguar 3.4, M1559 E-Type Jaguar, M1573 Aston Martin, M1541 Rolls Royce Silver Cloud, M1574 Porsche, M1550 Fire Engine, M1558 MB 300m1553 Caravan and Boat and Trailer, all in original boxes, unboxed Humber, Hump Back Bridge set, four boxes of track and loose track, single Street Lamps and Road Sign bases, all in original boxes/packets, G-VG, whitening to Rolls, boxes F-VG (qty) £70-90

445. **Tri-ang Minic Ships Waterline Models**, unboxed Queen Elizabeth, United States, Varicella, Savannah, Royal Yacht Hospital Ship, Caronia, Ivernia, Cardiff Queen, Bristol Queen, Centaur, Vanguard, Superb, Diana (2, one grey other blue), Blackpool, Devonshire, Venus, Virago, Turmoil and Anzac, Whaler (2), Pilot, Shambles, Vikingen, Tugs and Submarines, Tanker Wharf, Pier sections, Factory, Ocean Terminal, Oil Storage, Warehouses, Quay Straights, Breakwater Straights, ends and Lighthouses, 2nd and 5th Catalogues and other items, F-VG, vessels have no masts attached although several loose masts in box (qty) £80-120

Buyers Premium: 17.5% plus Value Added Tax making a total of 21% of the Hammer Price
Internet Buyers Premium: 20.5% plus Value Added Tax making a total of 24.6% of the Hammer Price



446. **A Wanders Allwin 'Honest Joe Nevanok' penny flick slot machine**, with spiral leading to 24 winning holes, glass front with oak surround, VG £800-1200



447. **A wooden RAF Blenheim style Bomber Airplane**, with metal cockpit and gun positions with opening bomb doors, with one bomb, painted silver with RAF roundels, possibly made during or just after WW2 £80-120

448. **Huntley and Palmers Tins**, Indian Scene Tin dated 1905 and Huntley Bourne and Stevens Transfer Printed sample tin circa 1870, F-G, Indian tin lid requires resoldering, (2) £80-120



449. **Huntley and Palmers History book dated 1926**, together with ten Huntley and Palmer Almanacs, 1891, 1893, 1894, 1895, 1896, 1897, 1898, 1899, 1900 and 1913, VG (11) £100-200

450. **Tri-ang Minic Ships Waterline Models**, including M702 Queen Elizabeth, M703 Queen Mary, M738, Ocean Terminal Extension, Oil Terminal Pipeline, Lifting Bridge, Lightships, Tugs, Whaler, HMS Turmoil, Swing Bridge, Warehouses, Quay Sections, Pier Head, Factory, HMS Vanguard, SS Varicella, T S S Vikingen, Crane Units, Flandre, HMS Bulwark, RMS Canberra and Breakwater Straights, some in original boxes, P-VG, some with paint chips and playwear and several lack Masts, boxes P-G (qty) £60-80



451. **The First Issue of TV21 Comic Thunderbirds 'Lady Penelope'**, including stories 'Perils of Parker', 'Man from UNCLE', 'Beverley Hillbillies', 'Space Family Robinson', 'Bewitched' and 'Marina' from Stingray, F, wear around edges, some ageing £50-80



452. **Wartime Board Game 'Bomber Command'**, with original instructions envelope containing card counters, boxed Pepys Series Horsie-Horsie, Thomas De La Rue & Co Golliwogg A Round Game, Belisha Card Game, Riders Of The Range, Waddy Production Colomino, John Jacques Happy Families, Geo Wright & Co Change For A Shilling, F-G, boxes P-F (qty) £80-120

453. **Tri-ang Minic Motorway M.1542 Jaguar 3.4 Saloon**, M.1543 Humber Super Snipe, in original boxes with unused lubricating oil and spare parts, plus 2nd Edition Owners Handbook, VG-E, boxes VG-E (3) £40-60

454. **Alps Japan Clockwork Bear**, holding balloon and ringing bell, Nomura Japan clockwork Begging Dog, boxed Fairland Series No.52 Fruit Machine and Famous Paintings card game, F-G, bear lacking two balloons, boxes F (4) £50-70



455. **A Telsalda (Hong Kong) Plastic Consul Corsair With Speedboat On Trailer**, Model 20767, light blue friction drive plastic Corsair, white/blue Speedboat on light blue trailer, three pieces of luggage, roof rack, spare wheel, in original box, E, box VG £60-80

456. **Hong Kong Plastic Matchbox 1-75 Series & Similar Copies**, including Breakdown Truck, Austin Lorry, ERF Cement Mixer, MG Midget, Land Rover, Tractor and others, in original boxes or sealed bags, two loose, VG-E, boxes F-VG (18) £50-70

457. **A Tinplate Friction Drive Citroen Safari Car**, grey body, black roof, roof rack, chrome trim, probably Chinese, Hong Kong plastic friction drive Red Line Tourist Coach, Crescent Matching Pair Texan Pistols, in original boxes, F-E, gun oil replaced, boxes P-VG (3) £50-70

458. **Modern Scalextric Range Presentation Cars**, all limited editions of 200 only, C3236 Audi R8LMS, C3435 Caterham 7, C3328 McLaren MP4-12C, in original boxes, E, boxes E (3) £140-180

459. **Vintage Star Wars Woolworth's Special Buy 8 Figure Pack**, containing Han Solo Bespin Fatigues, Klaatu, Lando Skiff Disguise, Leia Bousch Disguise, Luke X-Wing Pilot, in sealed Hong-Kong, Taiwan and Chinese baggies, loose C-3PO, R2-D2 Sensorscope, Emperor, all contained in clear plastic bag with 'Special Buy 8 Star Wars Figures For 99p', VG-E £80-120



460. **Vintage Scalextric C.74 Austin Healey 3000**, C.75 Mercedes 190SL, in original boxes, loose C.68 Aston Martin DB4 GT, C.69 Ferrari GT 250 Berlinetta, F-G, Ferrari and Mercedes with significant white mould, Healey and Mercedes lack front and rear bumpers, boxes P-F (4) £80-120

461. **Vintage Scalextric Race Tuned Cars**, C79 Offenhauser Front Engine Grand Prix, C80 Offenhauser Rear Engine Grand Prix, C77 Ford GT, C78 AC Cobra Sports, in original boxes, G-VG, boxes F-G (4) £60-80

462. **1960s Scalextric**, including C.72 B.R.M., C.67 Lotus, A209 Grandstand, A203 Owners Stand & Pit, A233 Entrance Building, A228 Refreshment Stand, other buildings, accessories, track, figures and related paperwork, P-G (qty) £80-120

463. **Bandai 1990s Power Rangers Dragonzord**, comprising Green Ranger, Dragonzord and Power Lazer Drill, in original boxes, E, boxes VG (3) £60-80



464. **Modern Scalextric Cars**, C2883 Ford Focus RS WRC Stobart No.7, C2645 Skoda Fabia WRC Colin McRae, C2711 Jaguar XKRA Rocketsports No.1, C2965 Aston Martin DBR9 No.009, C3116 Mercedes SLR McLaren 722 GT, C2816 Ford GT, C2234 VW Beetle, in original boxes, G-E, boxes F-VG (7) £80-120

Buyers Premium: 17.5% plus Value Added Tax making a total of 21% of the Hammer Price
Internet Buyers Premium: 20.5% plus Value Added Tax making a total of 24.6% of the Hammer Price

465. **Vintage Action Man**, including three dolls, various clothing and accessories, Rifle Rack, Air Vest, Gas Mask, Binoculars, Guns, Rifles and Gabriel Ind Lone Ranger Tonto figure, P-G (qty) £50-70



466. **Vintage Palitoy Action Man Searchlight**, Field Radio Pack, in original boxes with a good quantity of clothing and accessories including Detonator, Rifle Rack, Dynamite, Grenades, various guns, rifles and more, F-G, boxes F-G (qty) £80-120

Fine Models

467. **A Fine Scratchbuilt 1:8 scale model of a Velocipede (Bicycle)**, constructed in wood and metal to an excellent standard and presented in a wood/glass display case, a Bronze Medal winner at the 1997 Annual Model Engineering Exhibition, E £150-200



468. **A Fine Scratchbuilt 1:8 scale model of a Time Trial 1952 Leader Bicycle**, constructed in wood and metal to an excellent standard and presented in a wood/glass display case, a Silver Medal winner at the 1997 Annual Model Engineering Exhibition, E £200-300



469. **A Fine Scratchbuilt 1:8 scale model of a Horse-Drawn Kebrik or Churchbreak Dutch Vehicle**, constructed in wood and metal to an excellent standard and presented in a wood/glass display case, a Bronze Medal winner at the 1998 Annual Model Engineering Exhibition, E £200-300



470. **A Fine Scratchbuilt 1:8 scale model of a Horse Drawn Waring and Gillow Ornamental Trade Van**, constructed in wood and metal to an excellent standard and presented in a wood/glass display case, a Silver Medal winner at the 2002 Annual Model Engineering Exhibition, featured in Model Engineer April 2003, E £200-300



471. **A Fine Scratchbuilt 1:8 scale model of a Horse Drawn Royal Mail Coach circa 1827**, constructed in wood and metal to an excellent standard and presented in a wood/glass display case, Highly Commended at the 1995 Annual Model Engineering Exhibition, E £200-300



472. A Fine Scratchbuilt 1:8 scale model of a Horse Drawn Brush Wagon, constructed in wood and metal to an excellent standard with a huge assortment of brushes and other household ware, presented in a wood/glass display case, a Bronze Medal Winner at the 2002 Annual Model Engineering Exhibition, featured in a 2002 Model Engineer, E £200-300



475. A Fine Scratchbuilt 1:8 scale model of a Chuck Wagon, constructed in wood and metal to an excellent standard, presented in a wood/glass display case, a Silver Medal Winner at the 2002 Annual Model Engineering Exhibition, E £200-300



473. A Fine Scratchbuilt 1:8 scale model of a Horse Drawn Brooke Bond Tea Wagon, constructed in wood and metal to an excellent standard, a Bronze Medal Winner at the 2003 Annual Model Engineering Exhibition, E £200-300

474. A Fine Scratchbuilt 1:8 scale model of a Horse Drawn Charabanc circa 1900, constructed in wood and metal to an excellent standard, a Bronze Medal Winner at the 1998 Annual Model Engineering Exhibition, E £200-300

476. A Fine Scratchbuilt 1:8 scale Horse Drawn model of Florence Nightingale's Carriage, constructed in wood and metal to an excellent standard, E £100-150

477. A Fine Scratchbuilt 1:8 scale model of a Horse Drawn Removals Van, with builder's name T J Smith on sides, constructed in wood and metal to an excellent standard, E £150-200

478. A Fine Scratchbuilt 1:8 scale model of a Horse Drawn American Wild West Stagecoach, constructed in wood and metal to an excellent standard and painted to a good standard, VG £150-200

479. A Fine Scratchbuilt 1:8 scale model of a Horse Drawn London Omnibus, finished in London General Omnibus Company Ltd livery, constructed in wood and metal to an excellent standard, E £200-300



480. A Fine Scratchbuilt 1:8 scale model of A Canterbury Phaeton Horse Drawn Cart circa 1900, constructed in wood and metal to an excellent standard, E £100-150

481. A Fine Scratchbuilt 1:8 scale model of a Horse Drawn Express Dairy Milk Delivery Cart, constructed in wood and metal and painted to an excellent standard, E £100-150



482. A Fine Scratchbuilt 1:8 scale model of A Horse drawn Royal Mail Van, constructed in wood and metal to an excellent standard, VG, slight damage to a foot step, broken piece in van £80-120

483. A Fine Scratchbuilt 1:8 scale model of a Coster Monger's Hand Cart, constructed in wood and metal to a very good standard, £80-120

484. A Fine Scratchbuilt 1:8 scale model of a Horse Drawn Carriage, constructed in wood and metal to an excellent standard and painted in yellow and black to a very good standard, VG, slight damage £60-80

485. A Fine Scratchbuilt 1:8 scale model of a Hansom Cab, constructed in wood and metal to an excellent standard, VG, slight damage £50-70

486. A Fine Scratchbuilt 1:8 scale model of a Horse Drawn Baker's Van, with builder's name T J Smith on sides, constructed in wood and metal to an excellent standard, E £80-120

487. A Fine Scratchbuilt 1:8 scale model of 'Howe and White Ltd' Wallington Builders Hand-Cart, constructed in wood and metal to an excellent standard, £50-70



488. A pair of well-made scratchbuilt working Fellows Morton & Clayton Working Barges, No 195 'President' and No 274 'Kildare', both with timber loads and ¾ closed sheeting, L 70cm W 7cm H 10cm to chimney, presented in a well-made purpose made glass and wood display case, VG-E, both built and painted to a very good standard, Display case VG £200-300



489. A pair of well-made scratchbuilt Grand Union Canal Carrying Co Ltd working Barges, No 261 'Saturn' and No 95 'Venus', both with coal loads and open sheeting, L 70cm W 7cm H 9CM to chimney, presented in a well-made purpose made glass and wood display case, VG-E, both built and painted to a very good standard, Display case VG £200-300

490. A wooden model of a Falmouth working sailing boat, in blue and red with yellow and white sails, built and painted to a good standard, length 94cm, height 108cm, width 27cm, VG £50-80

Marine Models

491. A Bing Cat Ref.155/151 Clockwork New Destroyer, painted black, original paint, with four funnels, circa 1912, length 550mm, F, lacks mast, torpedo tubes and propeller, clockwork requires attention £400-600



492. A Crette Tinplate Clockwork Battleship, repainted in dark sea blue, length 400mm, F, lacks funnels, poor paint finish, clockwork requires attention £100-150

493. A Crette Tinplate Clockwork Battleship, repainted in deep sea blue, length 200mm, P-F, general paint loss, denting to body, clockwork motor shows signs of life however requires some attention £100-150

Pelham Puppets



494. Various boxed Pelham Puppets including animals, , Gepetto (repro box), Sailor, Farmer, Cinderella, Pinocchio, School Teacher, all with original strings, MacBoozle (lacks base of box), Minstrel, Witch, Bimbo, Golly, all restrung, all in original boxes, F-VG, boxes P-G (11) £100-140

495. Various boxed Pelham Puppets, Indian Boy, Fritzi, Schoolmaster, Clown, Poodle (2. one black, other white), Foal, with original strings and Frog, Baby Dragon, Bengo and Horse restrung, all in original boxes, F-VG, boxes P-G (11) £100-140

496. Walt Disney and other TV Pelham Puppets, Pinky (2, in small box and in long box), Goofy and Minnie Mouse, all in original boxes, and unboxed Micky Mouse, G-VG, boxes F (5) £40-60

497. A Pelham Puppet Monkey, in original box, and unboxed Pirate, G-VG, box F (2) £100-140

498. Various unboxed Pelham Puppets, including Cinderella, Sailor, Giant, Wolf, Tyrolean Boy and Hansel, all with original strings, Bride, Muffin the Mule, Cowgirl, Policeman, Andy Pandey, Noddy, Indian Girl, Gretel, Prince Charming and Dutch Boy all restrung and Skeleton without strings, F (qty) £50-80

499. Various Pelham Puppet Animals, including Tuff and Cat (half box), in original boxes, unboxed, Minnie Mouse, Horse, Foal, Bengo, Caterpillar, black Poodle and Jerry Mouse, F-G (12) £60-80

Lot 497



500. **Large quantity of unboxed Pelham Puppets**, including, Giant, Wolf, Macboozle, Minstrel, Clowns, Policeman, Gretel, Noddy and Big Ears, Cinderellas (3, some redressed?), Girl, Western Boy and others, generally F-G (20+) £50-80



501. **Pelham Puppets**, Skeleton, Emu, Pinocchio, Old Lady, Witch and Donald Duck, all in part or full original boxes, F-G, boxes P-F (6) £50-80

Meccano & Other Construction Toys

502. **A Meccano Constructor RAF Aeroplane**, unboxed, loose, F, together with Meccano Magazine instructions for conversion of Frog Kits for Morris 1100 and Toyota 2000GT to single channel radio, G (qty) £50-80



503. **Meccano Aeroplane Constructor No 1**, including made up model with RAF roundels and remaining parts (not checked) and Special Aeroplane Constructor Outfits 1 and 2 instructions dated 10/36 (poor), in original box, F, paint loss to many areas, box P-F, some damage and staining, grubby, 150-200

504. **A quantity of 1920s Meccano**, including gears, pulleys, wheels with and without tyres, Bush wheels, Gear wheels, braced girders, unpainted perforated strips, flanged plates, small red sand shovels/buckets, rods, plates, Windmill Sails, various instruction booklets (all without front and back covers) and other items in a non Meccano wooden box, G (qty) £100-150



505. **Vintage Lego Trains**, large collection including 7810 Locomotive without motor, 7816 Shell Tank Wagon (2), 7818 Passenger Coach (2), 7814 Crane Wagon, 7815 Sleeping Car, 7819 Mail Van, 7820 Mail Van, in original boxes, with a large crate of loose parts including motorised Locomotives, remote controlled points, track and other accessories, P-G, unchecked for completeness, boxes P-F (qty) £200-300

506. **Meccano Aeroplane Constructor Set No.1**, with red and cream parts, presumed incomplete with remains of original box, P, box P (qty) £40-60



507. **A Meccano No.6 Set 1920s** nickel, set contained in original wooden box with lift out tray, with an additional box of nickel parts, contents G, box P-F (qty) £80-120

Shackleton Foden Models



508. **A Shackleton Foden Flatbed Lorry**, in green with red chassis and silver wheel arches, with instructions, key and spanner; this model was featured on the Programme 'Flog It' at Eastbourne Auction Rooms in 2011, includes copy of catalogue with Paul Martin's signature. £200-300



509. **A Shackleton Foden Flatbed Lorry**, in yellow with grey chassis and red wheel arches, in original box with card insert, G, some paint chips, box F, heavy wear and some damage £300-400



510. **A Shackleton Foden Flatbed Lorry**, in green with grey chassis and red wheel arches, with key and spanner, in original box, VG, box P, heavily worn, damage and tape repairs £200-300



511. **A Shackleton Foden FG 6 Tipper Lorry**, in blue with grey chassis and red wheel arches and base of tipper, with instructions, key, spanner and tipper key, in original box, VG, box P, significant damage with most of lid unattached from sides, £300-400



FIGURES

Metal Soldiers Various Makers

The following 4 lots of Crescent sets are unsuitable for posting due to the fatigue present in some components, and can only be posted at the buyer's risk.

512. Crescent Toys boxed No. 1231 Fish Shop set, generally F, incomplete, though with 4 small original accessories, (11 pcs inc box), £80-120

513. Crescent Toys boxed No. 1230 Butcher's Shop set, complete with all accessories, meat, counters etc, F-G, fatigue to butcher's block and scales, (18 inc box), £120-180

514. Crescent Toys boxed No. 1227 School Days set, seems complete, F-G, a few faults, (14 inc box), £120-180

515. Crescent Toys boxed No. 1229 G.P.O. Engineers set, seems complete, F-G, a few faults, (13 inc box), £80-120

516. Crescent Toys boxed No. 1225 My Doggies set, complete with all parts and original 'Our Doggies' leaflet, with 2 additional unrelated dogs, generally G, (12 inc box and leaflet), £80-120

517. Crescent Toys boxed No. 1219 Milking Time set, complete with all parts, G-VG, (10 inc box), £60-100



518. Crescent Toys boxed No. 694 A.R.P Range Finder Unit set, with additional operators (2), officer and searchlight from another Crescent set, generally G, 1 F, (10 inc box) £100-150



519. Crescent Toys boxed sets comprising 5 pce No. 1520 Medieval set, No. 1450 Catapult, Railway Set, now with 10 pieces, Poplar Plastics boxed Roman Chariot and loose Crescent Toys Builders cart, ladder and bucket, with seated customer from Barber's Shop set, generally G, a few F, (4 boxed sets, 4 loose pieces), £80-120



520. Taylor & Barrett boxed Roman Chariot with Hilco Charioteer, F-G, a few faults, (5 pcs inc box), £60-100



521. F.G. Taylor boxed No. 179 Chimpanzees' Tea Party, generally G, a little worn, with lead working horses by Chabens, Hilco, Crescent and Britains, generally F, (11 inc set as 1), £60-100





522. **Taylor & Barrett boxed No. 20 Water Cart complete with driver and stand pipe**, G-VG, some minor faults, £250-350

523. **Lot of Phoenix Model Developments white metal horses and horse-drawn vehicle kits**, (8 unopened boxes), individual accessories (6), part-made kits (10), unstarted Airfix 54mm Collectors Series kits (2), (20+) £100-200

524. **Ducal Models mint boxed Firemen sets F1, F2, F3 and F4**, total of 25 pcs, VG, in 4 boxed sets, £60-100

525. **Ducal Models mint boxed Firemen sets F1, F2, F3 and F4**, total of 25 pcs, VG, in 4 boxed sets, £60-100



526. **Dorset Soldiers white metal copies of Taylor & Barrett Fire personnel comprising ARP set in chemical suits (6 pcs)**, Fire Escape with ladder and 4 pce crew, VG nr Mint, (total 12 pcs) £80-120

527. **Dorset Soldiers white metal Fire personnel comprising Water Barrel Cart with 2 man crew**, Water Pump on cart with 2 man crew, accessories including seated figures (4), hydrant, figure climbing ladder and active poses (2), VG nr mint, (total 17 pcs) £80-120

528. **Gerry Ford Design 5 piece sets of Historic Fire and Emergency Services personnel (5)**, VG nr mint (5 sets each of 5 pcs), £80-120

529. **Tradition white metal set VS1A The Volunteer Fire Brigade**, 11 pce sets including cart, VG nr mint, (2 boxed sets), £80-120

530. **Steadfast Royal Horse Artillery 12 pdr**, Limber and Gun Crews (2), boxed sets SF53, 54, 55 and 56, Britains New Metal boxed The Scots Guards, additional pipers (4), Britains 9786 boxed US Jeep, last version 25pdr and BAT guns with cards, boxed 9571 Land Rover and 9551 mini trailer, loose BAT gun and 25pdrs (2), models generally G-VG, a few faults, Master Models railway accessories (24 pcs), £80-120

531. **Britains New Metal Limited Edition set 40188 The King's Troop RHA**, 00141 Gaekwar of Baroda's Silver Gun and 08956 Duke and Duchess of Connaught on State Elephant from the Delhi Durbar Range, with F603 Battle of Waterloo Chess Set by Anne Carlton Games, all VG nr mint in boxes (4) £100-150



532. **Britains post WW2 Zoological Series single level box with 17 model animals**, animals by other makers, Taylor & Barrett, Hilco etc (8), generally G, 1 F, box F, (26 inc box) £50-80



533. **Britains lead mounted (7) and foot (4) Hunt figures from The Meet with hounds (11)**, galloping huntsmen (2), F-G, a few faults, (24), £80-120

534. **A selection of Britains lead figures comprising mounted Scots Greys (3 inc officer) and Despatch Rider**, machine gunner, foot guards (4), sentry box, policemen (2), dog, footballer, farm roller and workers (16) with all accessories, Elm trees (3), fence (3), other accessories (5), accessories (4) and figures (6) by Hilco, G-VG, 4 P, (50+) £80-120

535. **Britains loose Zulus (5) and Lifeguards from set 1**, cowboys (3) and Indians (2), by Hilco (5), Elastolin horses (4), papier Mache horses (2), other lead figures and accessories (11), Britains lead Zulu hut, F-G, a few P, (38) £60-80



536. **Small collection of lead farm animals by Britains**, F G Taylor, Crescent etc, includes rare Ducks Nest, Britains steer and Prize Poultry (3), F-G, 23 P, (72) £60-100

537. **Lot of lead dogs by Britains**, Timpo, Hilco etc, including Hilco kennels (2), Britains Begging Dogs (2), and Greyhound, generally G, a few F, (58), £80-120

538. **Lot of small lead animals including Barrett & Sons Rabbits with burrow and young (2 sets of 5 pcs)**, cat with basket and kittens (3 sets of 4 pcs), Dog with kennel and pups (2 sets of 4 pcs), Britains Swan with cygnets (2 swans with 6 cygnets), chicks (6), Goslings (6), rabbits (4), cats (3), hares (2), Hilco Doves (2), Pigeons (3), Robin, with piglets, nesting hens and chickens by other makers, generally G, (75+) £100-150

Lot 541



539. Blenheim Elephant Gun Team at the halt, complete with mounted officer, mahouts (2) and gunners (7), VG, officers scabbard detached but present, (12)
£100-150

540. Britains Swoppet knights including mounted (2) and foot (4), similar by Timpo, Lone Star knights (3) and New Metal figures by Almirall (2), Del Prado, D'Agostino etc, generally G, a few faults, (15)
£80-120

541. Military Medical figures by Britains, Crescent, Hilco, Fry etc, with a wooden, possibly home - made, First Aid Post and Clearing Station (base 265 X 340mm), a boxed Astra and unboxed Britains AA gun, Britains 2nd grade and Hilco lead soldiers (17) and a fabric tent, generally F, (83 inc 13 stretchers and 1 wooden building),
£80-120

542. Farm lead by Britains, Hilco, Crescent, Timpo etc, including Hilco pond, Cherilea Cow with bell, Britains Begging Dog and Jersey Cows (2), rabbits, piglets, sheep, chickens, geese etc, hutches, troughs etc, generally G, a few F, (110+),
£80-120

543. Lot of sub 54mm figures and vehicles including Britains Lilliput, Matchbox, Benbros etc, cars, tumbrels, people, Dinky railway passengers (3) etc, generally G, a few F, (27 vehicles, 10 people and animals, plus accessories) £80-120



544. Farm lead mainly by Britains, also Hilco, Pixyland, Crescent, Timpo, Benbros etc, people, birds, with a well-made wooden farm building on base, generally G, a few F, (200+),
£100-150

545. Lead trees, bushes, bullrushes by Britains, Crescent, Hilco and Taylor & Barrett, including Britains Garden Gates (2), garden trees (3), fruit trees (11), bushes (13), T & B Bullrushes (14), Crescent diecast bushes (4), Hilco small trees (6) and shrubs (8), fauna by other makers (39), generally G, 5 P, (104) £80-100

546. Britains lead My Garden, mostly flowers, also beds, a few walls, paving slabs, reproduction greenhouse, Hilco Summer House, a few plastic pieces, generally G, a few F, a few incomplete flowers, (150+),
£100-150



547. Lot of lead dogs including Britains black and white Scotties (4), Britains, Timpo and Hilco dogs (9), German made solid (16) and hollow (3) dogs, modern white metal (8), bronze (2), generally G, 1 P, (42)
£80-120

548. Taylor & Barrett miniature Road Cleaning Set (box and cleaner reproduction), Hilco large (5) and small (6) street lamps, lamps from street lighter set (2) with a man, lamps by other makers (6), telephone and post boxes (5), Britains petrol pumps on base, Morestone Hansom cabs (2), ladders, luggage, signs, oil bins etc, generally G, a few P, (50+) £80-120



549. Britains Hunt including mounted (3) and foot (3) people, hounds (14) and foxes (2), civilian stretcher parties including a Britains St John's stretcher bearer, civilian patients (4), Crescent St John's bearers (8), Nurses (3), small scale Hunt (12), churns, buckets, robins (2), rabbits (2), fox, etc generally G, a few faults, (80+)
£80-120

550. Britains loose sets 8 the 4th Hussars and 100 the 21st Lancers, both 1930s version, loose set 30 Drums and Bugles of the Line comprising officer, bass drummer, 2 boy side drummers and 4 adult buglers with arm 'playing instrument', Hilco Line Infantry (11), Scot and small scale mounted figures (7), additional Britains soldiers (2), F-G, a few faults (39), £80-120

551. Mignot Gerbeau Period 19th century French Infantry (20) with bugler, drummer, officer and flagbearer, and bandsmen (5), generally G, 8 with faults (29),
£200-250

552. Britains boxed item No. 2065 H.M. Queen Elizabeth as Colonel In Chief of the Grenadier Guards, further boxed examples by Benbros and Britains 7232 New Metal version, with an unboxed Benbros H M the Queen on foot, VG in VG boxes, (4) £40-80



553. Lot of metal and plastic Wild West figures including Malleable Mouldings horses (2), BMC cowboys (2), Crescent Cowboy on steer, etc, F-G, many P, (47 pcs) £30-50

554. Marching Gordon Highlanders (6) and Grenadier Guards (7) by Sacul, generally VG, 3 Guards F, (13) £50-80

555. Mignot Gerbeau Period mounted French infantry officer, Cuirassier officer, other officers (3), wagon team drivers without horses (3), post WW2 mounted (3) and foot (3) figures by other makers, generally G, 2 F, (14) £60-100



556. Crescent Toys plastic WW1 British Cavalry, (3 men, 2 horses), Lone Star Lone Ranger and Tonto, (missing Ranger's horse), Herald mounted Confederate officer, F-G, (9 pcs) £50-80

557. PLEASE NOTE this lot is not suitable for posting, due to the fragility of the figures. Timpo solid plastic boxed Battle of Waterloo series mounted figures, No. 3111 British Lancer, 3311 French Lancer, 3310 French Guard Officer and 3211 Prussian lancer (incorrect box), boxes G, figures P, (4), £20-40



558. Britains post 1956 version set 1722 Pipes and Drums of the Scots Guards, restrung in ROAN box, G-VG, a few drum transfers incomplete, box G, minor wear only, £200-300

559. Britains set 2073 Royal Air Force (marching at slope), restrung in ROAN box, VG in VG boxes, (2) £60-100

560. Britain Royal Marines sets 35 At Slope and 2071 At Present, restrung in ROAN boxes, (8 pce set 35, 7 pce set 2071), generally G, in G boxes, (2) £60-100

561. Second To None Models white metal boxed set The Red Devils Freefall Display Team, 6 figures still strung into display box, Limited Edition set numbered 56. VG nr Mint in box, £50-80

Swiss Collection

*NOTE: The following lots are subject to 20% import VAT on the hammer price.



562. *Quiralu (France) aluminium farm people and animals including birds (20), boys (6), cart, donkey etc, with a seated lead sailor, dog and walking farmer, all stuck onto carpet or cardboard bases in 6 vignettes, generally VG, (43 pcs on 6 bases), £80-120 THIS LOT ATTRACTS IMPORT VAT ON THE HAMMER PRICE AT 20%

563. *Quiralu (France) aluminium Wild animals, Tigers, Lions etc, with a lion tamer, and plaster chickens (4), all stuck onto carpet in 4 vignettes, (21 pcs on 4 bases), with Quiralu doves (10) stuck onto a Quiralu backing card, generally VG, £100-150 THIS LOT ATTRACTS IMPORT VAT ON THE



564. *Quiralu (France) aluminium football referees (7), Mignot trees and shrubs (10), greyhound, fox, people (2), vegetables (12), white metal Napoleonic figures (3) including Napoleon, British made lead trees (7), Britains hound and begging dog, with a few other items, generally G, 1 tree with damage to base (42+) £100-150 THIS LOT ATTRACTS IMPORT VAT ON THE HAMMER PRICE AT 20%

565. *Quiralu (France) aluminium North American Indians (6), cowboy, Boy Scouts (2), boys (2), land girl and footballer, with hollow lead farm birds (18), chicks (9), and other accessories, all stuck onto card bases in 3 vignettes, generally VG, 1 P, (56 pcs on 3 bases), £80-120 THIS LOT ATTRACTS IMPORT VAT ON THE HAMMER PRICE AT 20%

Greenwood & Ball & Reference Collection

566. Factory archive of the Greenwood & Ball company of miniature figure makers, including correspondence from customers including Douglas Fairbanks, Jack Scruby, contract between John Greenwood and Otto Gottstein, reference and research material regarding military uniforms including illustrations by Richard Simkin, photos (most B/W), personal and of factory's products, copy of the Rosenblatt (N.Y), 1952 catalogue, etc, etc, would reward viewing, large cardboard box worth, please enquire for cost of posting, £30-50

567. **Greenwood & Ball 54mm figures (4) including 2 original boxes, unmarked marching bandsman and horse, Imrie Risley casting and spare weapons, generally G, horse P, (8), £80-120**



568. **Greenwood & Ball 20mm mounted figures (44 including 14 incompletely painted), no horses, oxen (6), Preisser 1990 catalogue and set of 7 20mm figures, a few other pieces, painted G & B figures VG, others P-F, (50+ items), £50-80**

569. **A selection of 1970s figure sales lists from Medcalf, Opie, Haley, Marktime, Phoenix, Cavendish, Starling, etc, catalogues from Rose, Drumbeat, Blenheim, Starling, Hummel, Nostalgia, Suren, Greenhill, Gottstein, with some collectors 'For Sale' lists inc. Scott Morlan, generally G, a few F, mainly b/w lists and photocopied sheets, £10-20**



570. **An original Elastolin Hausser 1958 catalogue, Dent Toys U.S.A. 1929 catalogue, Kingston Products U.S.A. 1928 catalogue, facsimile Bell Toys U.S.A. 1902 and Charbens 1960 catalogues, The Skybird 1935 edition, and Meccano Magazine Digest 1928 - 40, Elastolin F, others G-VG, (7), £30-50**

571. **An original Herald (Britains) 1958 catalogue, VG, £30-50**

572. **An original Britains 'New Lines for 1937' catalogue, back cover with 1 bent corner, otherwise G with only minor wear, £30-50**



573. **An original Britains catalogue introducing the 'Parade Series' as new additions, possibly 1933 - 34, generally F, £30-50**

574. **An original Britains catalogue, probably 1935, includes Parade series and introducing the 'Scenic' range, P-F, extensive pencilled annotations and crossings out, £30-50**

575. **An original Britains catalogue dated 15/2/37, P, £30-50**

576. **An original Britains catalogue possibly 1938, showing all of the Disney characters, including Snow White and the 7 Dwarfs, with individual stock numbers and prices, £30-50**

577. **An original Britains 1948 catalogue with restricted lines etc, F-G, a little worn with covers tearing at edges, but complete with a 4 page home trade price list, £30-50**



578. **An original Britains 1952 catalogue with restricted lines etc, G, complete with minor wear only, £30-50**

579. **Original Britains two 1953 catalogues with restricted lines etc, G, complete with minor wear only, esp. to covers, and a 1952 Trade Price List, £20-30**

580. **Original Britains 1954 catalogue with Home Trade price list, with supplementary New Lines sheets and price lists for February 1954 and January 1955, G, complete with minor wear only, £20-30**

581. **Original Britains 1958 catalogue with pocket editions for 1955 and 1958, facsimile 1905, 1915 and photocopy 1934 New Lines catalogues, original 1939 New Lines and Crown range catalogues, an Almark reproduction 1940 catalogue, a 1952 part catalogue and a privately published booklet detailing the Garden series, generally G, 1952 catalogue P, (12 plus some loose sheets), £30-50**

582. **Original Britains 1948 leaflets for New Lines Farm Picture Packs and 'S' and 'P' Fort ranges, with 1953 leaflets for Clockwork Series, 'S' and 'P' Crown range, and Home Trade price list, with Coronation Souvenir Lines leaflet, generally G, Coronation leaflet F, (8), £80-120**



583. **Britains original pre WW2 Miniature Gardening catalogue, includes Boxed Lines supplement, generally F, covers detached but present, some pencil marks, £30-50**

584. **Britains original pre WW2 Miniature Gardening catalogue, without Boxed Lines supplement, generally G, covers fraying at edges etc but complete, £30-50**

585. **Britains original pre WW2 Model Home Farm Series catalogue, includes Boxed Lines and Trade Price supplements, generally G, most items with faint pencil marks over descriptions, covers fraying at edges etc but complete, £30-50**

Buyers Premium: 17.5% plus Value Added Tax making a total of 21% of the Hammer Price

Internet Buyers Premium: 20.5% plus Value Added Tax making a total of 24.6% of the Hammer Price

586. Britains original pre WW2 Model Home Farm Series catalogue, without Boxed Lines supplement, generally G, covers fraying at edges etc but complete, £30-50



587. Britains original pre WW2 Zoological Series catalogue, with 11 internal pages including price list, generally G, covers fraying at edges etc but complete, £30-50

588. Britains original pre WW2 Zoological Series catalogue, with 9 internal pages, without price list and some variations in content compared to previous lot, generally G, covers fraying at edges etc but complete, £30-50

Property of a Gentleman



589. B & T rare boxed No. 54 Jungle Set of White Hunters, 6 pcs still strung into box, VG nr mint in VG box, £80-120

590. B & T rare boxed No. 53 Marines set, 6 pcs still strung into box, VG nr mint in VG box, £40-60



591. B & T boxed sets No. 55 Cavalry, 4 pcs, and No. 60 Grenadier Guards, 6 pcs, both still strung into boxes, VG nr mint in G boxes, (2) £60-100



592. Dorset Soldiers set of a School Room consisting of copy of Taylor & Barrett teacher, children (4), wooden seats and desks (2 each), and blackboard, all VG nr mint (10) £60-100

593. Dorset Soldiers copies of Taylor & Barrett rickshaw with 2 female passengers being pulled by Chinese coolie, Zoo Kiosk, elephant and keeper, keeper with feed and bucket, VG nr mint, (9 inc bucket), £60-100



594. Dorset Soldiers copy of Taylor & Barrett Pixie House set, including Pixie on swing, VG nr mint (7 pcs), £80-120

595. Britains boxed set no.2 18 inch Heavy Howitzer on tractor wheels, 1930s version, complete with 3 powers of cartridge and shells (4), additional pre (4) and post (6) WW2 version Britains guns, spare ammo in sealed bags (4), guns by other makers (5), F-G, a few P, (20), £100-150

596. Britains 1930s versions boxed sets 12 the 11th Hussars and 99 the 13th Hussars, F-G, a few faults, (2) £80-120

597. Britains 1930s version boxed set 182 the 11th Hussars (Dismounted), set 75 scots Guards, box with 1 trooper for set 128 the 12th Lancers and empty box for 2nd Grade set 8a 1st the Royal Dragoons, 182 P, others F, a few faults, (4 boxes) £80-120



598. Britains loose 1930s version set 145 RAMC Wagon, 1930s version, a few faults, 1 orderly RAMC and 1 RSC, with replacement white metal orderly and outrider arm. £60-100

599. Britains loose post WW2 set 39 RHA with gun at gallop, no outriders, peaked cap gunners kneeling (3) and standing (3) from set 313, boxed set 1731 Spotting Chair and Observer, generally G, some faults, (8), £60-100

600. Britains pre WW2 version boxed 4 F Tumbrel, boxed Lilliput Sets LP504 and 505, VG in VG boxes, Racing Colour Lord Derby, P in P box, (4) £100-150

601. Figures riding camels by Marlborough, Hill (2), B & T (4), on Elephants (3), loose mahout, Zulus (2), Fry motorcyclist, Hilco Scots (4), and guard in great coat, Moultoy Zabu on foot and 1 on Pixyland Elephant, generally G, Hilco camels and Zabu F, Marlborough repainted, (23) £60-100

602. Steadfast Soldiers boxed sets SF20 and 21 Stretcher Party sand Medical Personnel, Cavendish Miniatures Henry VIII and 6 Wives, various Soldiers Soldiers loose British Army Personnel (15), white metal copy of Britains coupe, body from Britains Mountain Gun and RAF airman in peaked cap, generally VG, 1 F, (27) £100-150



603. Mignot 1980s production the Carrosse Imperial - Imperial Carriage of Napoleon and Marie-Louise, VG in VG box, 1 fault, £300-500

604. **Mignot post WW2 production Prussian Gun Team**, consisting of gun, limber, 2 sets of 2 horses, mounted outrider and horse, generally G, not matching, 1 fault, £50-80



605. **Mignot post WW2 production horse drawn limber and ammunition wagon**, with similar wagon by SR, field gun by another maker and seated US Confederate gunner, generally G, gunner F, (5), £60-100

606. **Mignot 1980s production boxed 4 pce sets Romans and Gauls**, VG, nr mint in VG boxes, (2), £50-80



607. **Mignot 1980s production boxed flagbearers consisting of Drapeau de Louis XIV**, Chasseurs à Cheval de la Garde (1812), and Picardie (1680), VG nr mint in VG boxes, (3), £60-100

608. **Mignot 1980s production boxed Parisian Family at play**, and lady riding horse, Paris 1900, VG nr mint in VG boxes (2), £60-100



609. **Mignot 1980s production boxed Napoleon 1st with Marie Louise**, Josephine Imperatrice, and Marie Stuart, VG nr mint in VG boxes, (3), £60-100

610. **Mignot 1980s production boxed Napoleonic personalities comprising Napoleon Bonaparte on foot**, mounted Napoleon III and General Lasalle, VG nr mint Lasalle's horse off base, (3), £60-100



611. **Mignot 1980s production boxed personalities from history comprising Saladin on foot**, mounted Cardinal Richelieu and Julius Caesar, VG nr mint in VG boxes, (3), £60-100

612. **Mignot French troops in horizon blue comprising pre WW2 version marching in kepis**, (8 inc bugler), pre WW2 version standing firing in Adrian helmets (11), marching in Adrian helmets (7 pre WW2 version, 9 post WW2 inc bugler, standard bearer and 3 empty handed), generally G, a few faults, (35) £80-120

613. **Mignot Musketeers (4)**, troops of Henri XIV (9), Romans (2), Crusaders (3), Gauls (2), Frankish knights (2), Greek and English Herald, all post WW2 production, F-G, a few faults, (24) £50-80

614. **Mignot 7cm scale castings of mounted Cuirassiers (6)**, complete with separately cast saddles, reins, heads, saddles etc, VG, (6 figures) £100-150



615. **Mignot 7cm scale castings of 19th Century French Infantry (9)**, complete with separately cast heads, packs, rifles etc, VG, (9 figures) £100-150

616. **Mignot Polar Exploration pieces including standing and seated explorers**, polar bear, husky dog, reindeer and sled, generally G, sled P, (6), £80-120



617. **French made lead figures including Mignot Wild animals (2)**, Wallaby, snake, giraffe and deer by other makers, Wild West stagecoach with seated driver and shotgun rider (similar to Hilco), with cowboy and Indian, Simon & Rivotlet Penny Toys (2), generally G, 4 P, (12), £60-100

618. **Mignot 1950s version boxed 8pce Turcos Band**, 1980s Jean Noel Bret recasts of French troops comprising Alpine troops (4), 19th Century French infantry with officer, bugler and stretcher party, (total 10 pcs inc stretcher), and Turcos (5), VG, (20 inc 1 box), £60-100

619. **French made lead figures of the French Army by various makers including Mignot Louis Roussy XR etc**, Belgian infantry, WW1 French Infantry, Artillery, cannon, medic with stretcher and patient, Lancer by G.M., sailors (5), etc, various scales, generally F, some G, 17 P, (58), £100-150



620. **Mignot modern production 2 - tier set French Army 'Compagnie de Telegraphistes' Signals Company**, fine original condition set and box, £400-600



621. Lucotte modern production set Napoleonic French Army horse drawn Munitions Wagon, tied into original vertical box, VG in VG box, £280-350



622. Lucotte modern production set Napoleonic French Army horse drawn gun and limber with 6 - horse team, tied into original vertical box, VG in VG box, £280-350

623. Mignot 1980s production set 820 'The Berline de Napoleon 1st' horse-drawn coach and four, tied into original vertical box, VG in VG box, £150-250

624. French aluminium figures by Quiralu, Aludo, Mignalu etc (18), lead (2), boxed William Hocker set No. 27 Islamic Indian Building Blocks, figures 10 G, balance P-F, boxed set as new, (21 inc 1 boxed set), £60-100

625. Original figures by the Antonini Italy company, 53mm figures of Italian Police (2) and Navy (2), 48mm figures of Italian troops in Jungle uniform, 4 G, 2 F, (6), £60-100

626. Original figures by the Antonini Italy company, 53mm figures of Italian Alpine troops (2), WW2 infantry (4), and Desert campaign uniform (1), 3 G, 4 F, (7), £60-100



627. Haffner Germany Prussian Gun, Team and Limber, with 3 sets of 2 horses, each with an outrider, and separately mounted officer, overall length 36cm, generally G, a few faults, £120-180

628. Superb recast of Haffner 'Bier Stand' 50mm scale scene of Prussian Army at rest, produced in the 1980s by Erich Eder, Germany, VG, £50-80

629. Haffner semi-round unpainted castings, probably modern copies, Prussian Army, including vignettes, explosions, scenery, figures etc, VG, (74), £50-80



630. Recast and painted 65mm scale Wollner figures comprising mounted Uhlan and foot Jäger officers, with unpainted 65mm castings of Dragoon, Officer and Uhlan, as new, (5), £50-80

631. Modern castings including Charles Stadden 90mm Napoleonic Dragoon, 54mm castings of Chinese boxers by unknown maker (3), WW2 Pilot, 19th Century US Officer with lady, MHSP France Revolutionary officer (2), 95mm castings of 18th Century Bavarian Infantry, VG, (12), £50-80

632. Various Haffner 40-50mm figures, the majority unpainted castings, with 5 original figures including charging 45mm Greek soldier, VG, (51) £50-80



633. Recast Haffner 48mm Arab Warriors comprising mounted (5) and foot (8) figures, VG as new, (13) £50-80

634. Wollner recast 53mm size fully rounded Turkish ? marching Band, VG near mint (12), and Wollner 45mm demi-ronde Prussian band, F-G, (20), (32) £40-60



635. Haffner post WW2 recast horse drawn Canteen and limber, overall length 222mm, with additional gun, generally G, a few faults, 50mm scale Austrian gun and limber with 3 teams of horses, probably modern using some original horses, c/w 2 outriders and 2 seated figures, F-G, (2 sets), £60-100

636. Haffner 35mm boxed set comprising gun with limber and 2 horse teams, limber with horses, separate gun, limber and caisson, not all contents correct to box, F-G, box F, £40-80

637. German made 40mm cavalry, possibly Bavarian, possibly Algeyer, generally G, a few F, (24), £80-120

638. Recast Heyde 90mm 19th Century French Infantry including flagbearer, generally VG, 1 F, (6), £50-80



639. Recast Heyde 90mm 19th Century British Infantry including flagbearer, generally VG, (6), £50-80

640. Recast Heyde 90mm 19th Century Austrian Infantry including officer, generally VG, (6), £50-60

641. Recast Heyde 90mm 19th Century Prussian Infantry in field uniform including flagbearer and officer, generally VG, (6), £50-80

642. Recast Heyde 90mm 19th Century Prussian Guards including flagbearer and officer, generally VG, (6), £50-80



643. Recast Heyde 90mm 19th Century Prussian Alexander Guards including flagbearer, generally VG, (6), £50-80

644. Unpainted 70mm castings of Wollner WW1 Infantry comprising Hungarian, Bosnian and German infantry and bandsmen, VG (24) £80-120

645. Unpainted 55mm castings of Vienna Toy Soldiers (Wiener Toy Soldiers) Austrian band (12), repainted Spenkuch Frederick the Great 50mm guards including foot and mounted officers, and flagbearer, (18), castings VG, Spenkuch F-G, (2 sets, total 30) £50-80



646. Heyde 30mm demi-ronde German WW1 Field Kitchen, post WW2 copies of Wollner 47mm mounted demi-ronde figures, (24 plus additional rider), vignette of Haffner WW1 German infantry (6 pcs) in modern box, G-VG, (26 inc Haffner box), £80-120

647. Modern professionally painted copies of Spenkuch demi-ronde zoo cages with animals and people (18), unpainted castings of Wollner Italian Bersaglieri (11 inc mounted officer), and Austrian Mountain troops (44), VG, (73) £60-100

648. German - probably Heinrichsen - flats comprising WW1 German troops, knights, Napoleonic's, solid lead vignette of Hansel, Gretel and the Witch, 150mm white metal figures of Landsknecht and Cuirassier, G-VG, (lot), £50-80

649. Britains sets 1291 and 2153 12 pce Band of the Royal Marines, both restrung into original ROAN boxes, correct complements, but bass drummers have been swapped, VG in G boxes, £60-100

650. Britains set 2075 the 7th Hussars, 4 pce post WW2 sets, restrung into ROAN boxes, VG in VG boxes, (2) £50-80

651. Britains post 1954 sets 1527 R.A.F. Band, all with gold stripe to trousers, restrung into original ROAN boxes, generally VG in VG boxes, some variation between contents, possibly incorrect, (2), £80-120



652. Britains post WW2 set 9420 Royal Artillery Gun & Detachment, restrung into original ROAN box, VG in VG box, £50-80

653. Britains post WW2 sets 2108 Welsh Guards Drums & Fifes, all restrung into original ROAN boxes, all plastic drum versions, VG in G boxes, (2) £60-100

654. Britains last version (6 pce) set 9140 Royal Marines at slope, restrung onto backing card without box, VG (total 4 officers, 20 Ors on 4 cards), £50-80

655. Britains last version set 9206 The Lifeguards, restrung onto original backing cards without boxes, VG (4 officers, 6 each troopers plume down and plume flying, total 16 pcs on 4 cards), £50-80

656. Britains last version set 9209 Royal Horse Guards, restrung onto original backing cards without boxes, VG (4 officers, 12 troopers, total 16 pcs on 4 cards), £50-80

657. Britains last version set 9209 Royal Horse Guards, restrung onto original backing cards without boxes, VG (4 officers, 12 troopers, total 16 pcs on 4 cards), £50-80

658. Britains last version set 9212 the 1st King's Dragoon Guards, restrung onto original backing cards without boxes, VG (5 officers on greys, 5 cantering and 10 walking troopers, total 20 pcs on 5 cards), £50-80

659. Britains last version set 9214 the 7th Hussars, restrung onto original backing cards without boxes, VG (4 officers, 4 cantering and 8 trotting troopers, total 16 pcs on 4 cards), £50-80

660. Britains last version Horse Guards from set 9209, loose models comprising officers on prancing horse (4), and troopers on walking horse (12), VG, (16) £50-80



661. Britains set 9312 Band of the Royal Scots Greys, 7 pce set, restrung into original ROAN box, VG in VG box, £50-80

662. Britains post WW2 set 101 The Band of the Lifeguards, 12 pce set, restrung into original ROAN box, VG in G box, £100-150

Lot 671

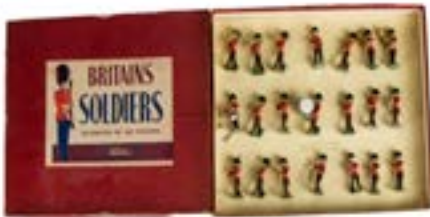


Lot 672



663. **Britains post WW2 set 9406 The Band of the Lifeguards**, 12 pce set, restrung into original ROAN box, VG in VG box, £100-150

664. **Britains post WW2 20pce set 9435 Band Highland Pipers The Black Watch**, VG in VG box, £100-150



665. **Britains post WW2 21 pce set 37 The Band of the Coldstream Guards**, 1956 plastic drum version, restrung into original ROAN box, VG in G box, £120-180

666. **Britains post WW2 set 1720 mounted Band of the Royal Scots Greys (2nd Dragoons)**, VG in VG box, £60-100



667. **Britains post WW2 set 1720 mounted Band of the Royal Scots Greys (2nd Dragoons)**, VG in VG box, £60-100

668. **Britains post WW2 12 pce set 2116 Band of the Royal Air Force**, restrung into original ROAN box, VG in G box, £50-80



669. **Britains post WW2 set 163 Boy Scout Signallers**, restrung into original box, VG in G box, £150-200

670. **Britains post WW2 set 163 Boy Scout Signallers**, restrung into original box, VG in G box, £150-200

671. **Britains post WW2 Zoo set 27Z**, restrung into original box, VG in G box, £200-300

672. **Britains post WW2 Zoo set 3Z**, restrung into original box, G in F box, £120-180

673. **Britains post WW2 set 9402 The State Open Road Landau**, restrung into original Britains Historical Series box, VG in VG box, £50-80



674. **Britains post WW2 set 1257 Yeoman of the Guard (Beefeaters)**, restrung into original Britains Historical Series box, VG in G box, £50-80

Property of a Gentleman Heyde & Noris Figures

675. **Heyde size 2 Prussian Cavalry including 5 with moveable arms**, F-G, some minor wear and repairs, (7), £80-120

676. **Heyde size 2 WW1 German and French troops**, generally G, a few faults, (21) £100-150



677. **Heyde size 2 knights**, possibly from a tournament set, with 2 wooden buildings, F-G a few faults, (11 inc 2 buildings), £100-150

678. **Heyde size 2 vignette of the Austro - Prussian War with additional figures (4)**, generally G, a few faults, (5) £150-250



679. **Heyde size 2 Arabs on horses (6) attacking Desert Caravan carrying gun and supplies**, with wood and paper scenery, probably not Heyde, though contemporary, G-VG, a few minor faults, (total 30 pcs inc all separate packs, wheels etc), £400-600

680. Heyde size 2 WW1 US Infantry (9 inc officer) and Bandsmen (6), infantry F-G, generally worn with paint loss and surface deterioration, bandsmen G, 2 F, (15), £80-120



681. Heyde size 2 WW1 German infantry (10) and sailors (6), generally G, a few F, (16), £80-120

682. Heyde size 2 WW1 Austrian (5) and Scottish (5) troops, including Scottish cyclist and Sikh (2) troops, generally G, some wear, 1 F, (10), £60-100

683. Heyde size 2 WW1 German (6) and French (6) troops, with papier Mache scenery by another maker, generally G, general wear only, scenery total repaint, (13) £60-100



684. Heyde size 2 Spanish troops from Spanish - American War (11 inc mounted officer), 18th Century French troops (6), recast Heyde tree and a Spenkuch N A Indian, generally G, minor wear only (19), £150-200



685. Heyde size 2 British troops (11) and Zulu Warriors (5), with a bush, generally G, a few F, (17) £120-180



686. Heyde size 2 Naval Artillery comprising sailors (9), gun and limber, generally F, a few faults, (11) £100-150



687. Heyde size 2 Arabs and French Foreign Legion with Turcos, comprising Arabs on camels (5), running Arabs (3), tree, FFL (3), Turcos (10 inc officer), generally G, a few faults, (27) £250-350

688. Heyde size 2 Trojans, F-G, 2 F, (10) £100-150



689. Heyde size 2 Denmark Prussian War troops, Danish (9), Prussians (8), F-G, a few faults (17) £100-150

690. Heyde size 2 Cowboys (4) and Indians (4), generally F, most figures with faults (8), £60-100

691. Heyde size 2 Menelik Ethiopian (6) and Italian (6) troops, generally G, a few faults, (12), £120-180

692. Heyde 2 British Signals Team components comprising Telegraph poles (2) and figures (10), generally G, 4 with faults (12), £150-200



693. Heyde size O (55mm) Buffalo Hunt items, comprising Buffaloes (3) cowboys (3), Indians (2), F-G, some minor faults, (8), £150-200



694. Heyde size 1 (60mm) Native with bear, spear tip probably replaced, bear repaired to back, otherwise both G, (2) £50-80

695. Heyde trinket Parrot pen wipe, Parrot 88mm high, horse hairs loose and starting to fall out, otherwise G, £40-60



696. Heyde trinket Devils in canoe, canoe 119mm long, G, minor wear only, £60-100

697. Noris 58mm British Colonial troops, G-VG, minor wear and a couple of bent rifles (6), £100-150



698. Noris 58mm German sailors, G-VG, minor wear and a couple of bent rifles, (6), £220-280

END OF AUCTION



Paddle

81 GREENHAM BUSINESS PARK, NEWBURY, RG19 6HW
 TELEPHONE: 01635 580 595
 mail@specialauctionservices.com
 TY280318

NAME: _____

ADDRESS: _____

_____ POSTCODE: _____

TELEPHONE: _____ EMAIL: _____

PREFERRED METHOD OF COLLECTION /DESPATCH OF PURCHASES _____

AREA OF INTEREST: _____

To Specialist Auctions Ltd trading as Special Auction Services.

Please execute the following bid(s) on my behalf as cheaply as possible given the competition of other bid(s) and/or any reserve. The prices shown in Pounds Sterling are the Hammer Price to which will be added the Buyer's premium of 17.5% plus Value Added Tax together with any Value Added Tax that may be payable on the Hammer Price.

I have read and agree to abide by Special Auction Services Full Terms and Conditions.

I agree to my details being held on a data base to enable me to receive correspondence regarding future auctions.

I also agree to Special Auction Services only forwarding my data to Couriers should I confirm that shipping of my purchases is required.

SIGNED: _____ DATE: _____

Lot Number	Description	Max Bid (£)

Buyers Premium 17.5% plus Valued Added Tax making a total of 21% of the Hammer Price

ABBREVIATED TERMS AND CONDITIONS

Please ensure you view the Full Terms & Conditions on our website prior

Specialist Auctions Ltd Trading as Special Auction Services referred to as The Auctioneer and to include any person acting upon his authority. In these Terms of Sale the words 'you', 'yours', etc. refer to you as the Buyer. The words "we", "us", etc. refer to the Auctioneer. English Law shall govern all transactions associated with this sale.

Conditions of Sale

Third Party Liability: All persons on the premises of, or at a venue hired or borrowed by the Auctioneers are there upon their own risk. They shall have no claim against the Auctioneer in respect of any accident, injury or damage howsoever caused.

Bidding procedures and the Buyer: You must register your details with us before bidding and provide us with any requested proof of identity and billing information, in a form acceptable to us. You must also satisfy any security arrangements we have in place before entering the auction room to view or bid. We strongly recommend that you attend the auction in person. You are responsible for your decision to bid for a particular Lot. If you bid on a Lot, including by telephone and online bidding, or by placing a commission bid, we assume that you have carefully inspected the Lot and satisfied yourself regarding its condition and authenticity.

The Purchase Price: As Buyer, you will pay: a) the Hammer Price; b) a premium of 17.5% of the Hammer Price if bidding in the room, telephone bidding or leaving a commission bid; an additional 3% premium will be charged for all bidding via the online platform; c.) any artist's resale right royalty payable on the sale of the Lot; and d) any VAT due.

VAT: You shall be liable for the payment of any VAT applicable on the Hammer Price and premium due for a Lot. We will charge VAT at the current rate at the date of the auction. Items in our catalogue may be marked in the following ways: (*) indicates that VAT is payable by the buyer on the hammer price as well as being an element in the buyer's premium. VAT will be chargeable at the standard rate (presently 20%). This imposition of VAT is likely to be because the seller is registered for VAT within the European Union and is not operating the Dealer's Margin Scheme or because VAT is due at 20% on importation into the UK. (**) indicates that the lot has been imported from outside the European Union. [These lots are liable to the standard rate of VAT (currently 20%); in certain circumstances these lots will incur a reduced rate of VAT (5%) on the hammer price and buyer's premium]. The rate will be clearly indicated. Lots which do not have either of the above symbols have no VAT payable on the hammer price. This is because such lots are sold using the Auctioneers' Margin Scheme. **The VAT included within the premium is not recoverable as input tax.**

Payment: Immediately following your successful bid on a Lot you will pay to us the Total Amount Due within 7 days, by cash (maximum £10000), debit card or bank transfer. Following the day of the sale, we will send out invoices to all successful telephone, online and commission bidders via email or post. We will where ever possible include on the invoice a charge for packing and shipping the lots purchased. Packing is undertaken in house and shipment is made by Courier or Royal Mail. Insurance cover on shipments is not provided within this charge. We also reserve the right to ask the buyer to complete a disclaimer regarding this service prior to despatching the goods. Alternatively, you will (at your own expense) pay for and personally collect or arrange your own courier to collect any Lots that you have purchased. This must be undertaken no later than 7 days following the day of the auction. You may not claim or collect a Lot until you have paid for it. If you do not pay for or collect the Lot within this time period, you will be responsible for any reasonable removal, storage and insurance charges in relation to that Lot.

Warranties: The Seller warrants to us and to you that: the Seller is the true owner of the Lot for sale or is authorised by the true owner to offer and sell the lot at auction; the Seller is able to transfer good and marketable title to the Lot to you free from any third party rights or claims; and as far as the Seller is aware, the main characteristics of the Lot set out in the auction catalogue (as amended by any notice displayed in the saleroom or announced by the Auctioneer at the auction) are correct. If, after you have placed a successful bid and paid for a Lot, any of the warranties above are found not to be true, please notify us in writing. Neither we nor the Seller will be liable to pay you any sums over and above the Total Amount Due and we will not be responsible for any inaccuracies in the information provided by the Seller except as set out below.

Descriptions and condition: Our descriptions of the Lot will be based on: (a) information provided to us by the Seller of the Lot (for which we are not liable); and (ii) our opinion (although it is likely that we will not be able to carry out a detailed inspection of each Lot). Weights and measurements given are all estimates. We will give you a number of opportunities to view and inspect the Lots before the auction. You (and any independent consultants acting on your behalf) must satisfy yourself about the accuracy of any description of a Lot. We shall not be responsible for any failure by you or your consultants to properly inspect a Lot. Representations or statements by us as to authorship, genuineness, origin, date, age, provenance, condition or estimated selling price involve matters of opinion. We undertake that any such opinion will be honestly and reasonably held and accept liability for opinions given negligently or fraudulently. Please note that Lots (in particular second-hand Lots) are unlikely to be in perfect condition. Lots are sold "as is" (i.e. as you see them at the time of the auction). Neither we nor the Seller accept any liability for the condition of second-hand Lots or for any condition issues affecting a Lot if such issues are included in the description of a Lot in the auction catalogue (or in any saleroom notice) and/ or which the inspection of a Lot by the Buyer ought to have revealed. We will give indications of provenance where stated by sellers. It is imperative that potential buyers or their Agents inspect lots that interest them prior to the auction. Purchases of autographed materials and works are made at the risk of the purchaser. Subject to our Terms and Conditions we cannot accept returns on these items.