



Hugo Marsh
Director



Neil Shuttleworth
Director



Thomas Forrester
Director



specialauctionservices.com

The Turnbull Toy & Train Collection

23rd February 2021 at 10.00



Dave Kemp
Fine Diecasts



Bob Leggett
Toys, Trains &
Figures



Dominic Foster
Toys



Graham Bilbe
Trains

Special Auction Services

Plenty Close

Off Hambridge Road

NEWBURY RG14 5RL

Telephone: 01635 580595

Email: mail@specialauctionservices.com

www.specialauctionservices.com



Due to the nature of the items in this auction, buyers must satisfy themselves concerning their authenticity prior to bidding and returns will not be accepted, subject to our Terms and Conditions.

Additional images are available on request.

Buyers Premium with SAS & SAS LIVE: 20% plus Value Added Tax making a total of 24% of the Hammer Price

the-saleroom.com Premium: 25% plus Value Added Tax making a total of 30% of the Hammer Price

John Turnbull (31st May 1938 – 24th March 2020)



John was born in Plymouth, the son of Harry Turnbull, a trained mechanical engineer, and musician. His uncle, George Turnbull, had the first self-service garage 'Turnbulls' in Plymouth, with its unique roundtable self-service pumps, where he also sold Vauxhall cars. Transport was part of his family history. His love of cars continued much later in his life, with his collections of EFE, Corgi, amongst others.

After the first bombs fell on Plymouth on 6th July 1940, fearing for their safety, his parents moved to Bristol where his Harry worked for the Bristol Aeroplane Company. He was in the research and development department dealing with aero engine technology, at the time trying to upgrade or renew engines to improve the performance of the famous Bristol Beaufighter. When the Bristol Blitz started, his family, particularly his mother, was once again too frightened to stay and they moved, this time to Tavistock to get as far away from the bombing as possible. John was privately educated at Miss Balkwell's infant school and afterwards went to Tavistock Grammar School.

At the age of 15 John enlisted as a boy soldier at the Military School Harrogate, 1953-1956, where he learnt his trade as a surveyor in the Royal Engineers. In 1959, the Turnbull and Lyons families moved from Tavistock to Exeter and the fathers bumped into one another at a local pub. There, John was to meet his wife June Lyons in 1959.

After posting to NATO in 1965 and then to Barton Stacey in 1968, he decided to leave the Army and continue his life as a civilian, joining Hunterprint at Eastleigh as a Lithographic Artist, dealing with customers.

John loved spotting and photographing steam trains in particular but also shot diesel locomotives. June describes most of their days courting as mainly by the railway lines at Powderham. In 1962 they married and were very rarely apart thereafter.

John was father to Kevin and Karen and in 1974 was invited by the British Government to teach printing and photography in Lima in Peru. He was a very private man who enjoyed nothing more than sitting by a railway line taking train numbers. Having visited 26 countries, he was also a keen photographer and an avid collector.

In 1979 he was due to return to the UK with his family but decided to take the opportunity to take a 6-month tour of the USA and Canada. It was in the USA that he started his collection of brass locomotives, soon some of his favourite types. Perhaps, his most loved locomotive was the magnificent 'Big Boy'. He would often refer to this - although the family had never seen it. It had been put away, along with the growing collection, which over the years had spread across his bungalow, occupying loft, garage and bedroom space.

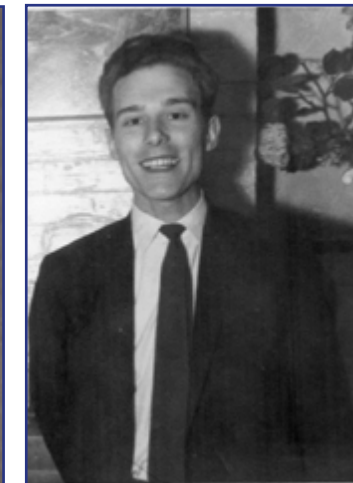
After working for over 20 years in the printing trade, John set up his own printing business. He later retired and took up a small job working in The Model Shop in Totton, Southampton, taking models in lieu of payment. He of course loved working there, offering his knowledge to potential buyers. During that time Beattie's Model Shop in Southampton closed down and he was quick to go in and buy much of their stock, some of his collection remaining in its main packing box, untouched and unopened. When he did open anything for inspection, he would always wear white cotton gloves. He often told his children "the box is as important as the model inside".

As a former Sergeant in the Royal Engineers, he loved all military transport, particularly aeroplanes, often taking his family to Air Tattoos. He had amassed a large collection of these, although this was a more modern collection than the trains. Sadly, over the years John did not have the same enthusiasm for the diesel locomotive and he turned to his next love, cars, thence to buses and lorries - in fact all manner of transport!

On 24th March 2020, the day after lockdown, in what was to become a year that nobody would ever forget, John went up to the loft to get some items and to put some boxes away. Sadly, that was the last thing he did, as tragically he fell and died.

Following such a terrible tragedy, John's family felt it would be fitting that his entire life's collection should be auctioned and open to an international audience with other enthusiasts and collectors, and will hopefully form part of their treasured collections and maybe passed down to future generations. They hope it is loved and appreciated for many years to come.

June & Karen Turnbull, January 2021



Order of Auction

Lot 1-168	Die Cast Aircraft and Vehicles
Lot 169-175	Plastic Kits and Toys
Lot 176-191	N Gauge Trains
Lot 192-258	Hornby OO Gauge Trains
Lot 259-288	Bachmann OO Gauge Trains
Lot 289-343	Lima and Other OO Gauge Trains
Lot 344-358	Kit Built OO Gauge Trains
Lot 359- 366	Post War OO Gauge Trains
Lot 367-398	Continental HO Gauge Trains
Lot 399-418	American HO Gauge Trains
Lot 419-426	American Outline On30 Gauge Trains
Lot 427-456	Oriental Brass and Fulgurex HO Gauge Trains
Lot 457-469	O Gauge Trains and Collectibles



Lot 431

1. **Corgi Aviation Archive 1:32 Scale D Day 60th Anniversary Mosquito**, a boxed limited edition AA34602 DH Mosquito PR XVI-NS502 544 Squadron RAF Benson 1944, appears as new, E, Box G-E £120-180

2. **Corgi Aviation Archive 1:32 Scale Supermarine Spitfire**, a boxed limited edition AA33901 Spitfire MK 1A RAF 609 Sqn, appears as new, E, Box G-E £50-80

3. **Corgi Aviation Archive 1:32 Scale Supermarine Spitfire**, A boxed limited edition AA33902 Spitfire MK 1 in battle scarred livery, RAF 19 Sqn, Squadron Leader Brian Lane, appears as new, E, G-E £50-80



4. **Corgi Aviation Archive 1:32 Scale Supermarine Spitfire**, A boxed limited edition AA33903 Spitfire MK11A Tangmere, Wing Commander Douglas Barder, appears as new, E, Box G-E £50-80

5. **Corgi Aviation Archive 1:32 Scale 70 Years of The Spitfire**, A boxed limited edition AA33908 Spitfire Type 300- Prototype K5054 Eastleigh 1936, with book Sigh For a Merlin, factory sealed, appears as new, E, Boxes G-E £80-120

6. **Corgi Aviation Archive 1:32 Scale War in the Pacific P-51D Mustang and Attack By Night Messerschmitt**, two boxed limited edition 34401 P-51D Mustang Stinger VII Major Robert W Moore Iwo Jima 1945 and AA34901 Messerschmitt Red 6 Arnold Doring, both appear as new, E, Boxes G-E (2) £80-120

7. **Corgi Aviation Archive 1:72 Scale Battle Of Britain Memorial Flight Set and RAF 4 Piece Set**, a boxed limited edition AA32602 set including Avro Lancaster Mickey The Moocher, Spitfire MKIIA and Hawker Hurricane together with AA99170 No 1 Squadron Through The Ages four plane set, both appear as new, E, Boxes G-E, (2) £120-180



8. **Corgi Aviation Archive 1:72 Scale Europe and Africa Bomber and Fighter Set**, a boxed limited edition AA99133 set including Avro Lancaster 635 Squadron and DH Mosquito 109 Squadron Pathfinder Force, appears as new, E, Box G-E £60-80

9. **Corgi Aviation Archive 1:72 Scale Battle Of Britain Memorial Flight Set**, a boxed limited edition AA32602 set including Avro Lancaster Mickey The Moocher, Spitfire MKIIA and Hawker Hurricane, appears as new, E, Boxes G-E £80-120

10. **Corgi Aviation Archive 1:72 Scale Blitz Set**, a boxed limited edition AA99127 set including Heinkel He 111, Messerschmitt Me 109E and Supermarine Spitfire MK1 611 Sqn Rochford, appears as new, E, Box G-E £60-80

11. **Corgi Aviation Archive 1:72 Scale War in the Pacific Set**, a boxed limited edition AA99126 set including Boeing B-17F Miss Minookie, P47D Thunderbolt Rozzie Geth II/ Miss Fire and P51D Mustang, appears as new, E, Box G-E £60-80



Lot 15



12. **Corgi Aviation Archive 1:72 Scale War in the Pacific Boeing B-17 G**, a boxed limited edition AA33307 B-17 G Confederate Air Force, Arizona Wing, Sentimental Journey, appears as new, E, Box G-E £80-100

13. **Corgi Aviation Archive 1:72 Scale War in the Pacific Liberator**, a boxed limited edition AA34001 Consolidated Liberator B-24J The Dragon and His Tail, Le Shima 1945, appears as new, E, Box G-E £50-80

14. **Corgi Aviation Archive 1:72 Scale Europe and Africa Liberator and Flying Fortress**, two boxed limited edition models, AA34003 Consolidated B-24D Liberator Strawberry Bitch Libya 1943 and AA33301 Boeing B-17F Flying Fortress Memphis Belle, both appear as new, E, Boxes G-E, (2) £100-120

15. **Corgi Aviation Archive 1:72 Scale Europe and Africa Lancasters**, two boxed limited edition models, AA32604 Avro Lancaster I Admiral Prune 106 Sqn Guy Gibson 1942 and AA32605 Avro Lancaster 419 Sqn, both appear as new, E, Boxes G-E, (2) £80-120



16. **Corgi Aviation Archive 1:72 Scale Lancasters**, two boxed limited edition models, AA32601 Avro Lancaster 467 Squadron and AA32603 Avro Lancaster No 44 Rhodesia Sqn RAF 1942, both appear as new, E, Boxes G-E, (2) £80-120

17. Corgi Aviation Archive 1:72 Scale 70 Years of the Spitfire and Lancaster, two boxed limited edition examples AA99189 Johnnie Johnson three plane set, MKI, MKVB & MKIX with display plinth and AA32603 Avro Lancaster No 44 Rhodesia Sqn RAF 1942, both appear a new, E, Boxes G-E, (2) £80-120

18. Corgi Aviation Archive 1:72 Scale WWII Aircraft, three boxed limited edition examples including Heinkel HE111H-6 AA33705 Russia 1943 and AA33702 Finland 1944, (loose cockpit cover and one propeller blade detached) together with AA34801 Attack by Night, Vickers Wellington RAF Honnington 1939, F-E, Boxes G-E, (3) £80-100

19. Corgi Aviation Archive 1:72 Scale WWII Aircraft, four boxed limited edition examples including AN31919 50th Anniversary of Corgi Spitfire MKI Flt Lt Adolf Malan with booklet and display plinth, AA31921 70 Years of the Spitfire Wg Cdr Jack Charles with model of Merlin engine, AA99110 DH Mosquito & Spitfire Type G Reconnaissance unit with oil Bowser and AA33702 Heinkel HE111H-6 Finland 1944, all appear as new, E, Boxes G-E, (4) £80-120



20. Corgi Aviation Archive 1:72 Scale WWII Axis Aircraft, nine boxed limited edition examples, including Messerschmitt AA32101, AA32102, 49204 and 49205 (with reproduction pilots notes), Junkers AA32501, AA32504, AA32502, and Mitsubishi Zero AA33102 (battle worn livery), AA33101, E, Boxes G-E, (9) £100-150

21. Corgi Aviation Archive 1:72 Scale WWII American Aircraft, nine boxed limited edition examples, comprising Mosquito PRXVI AA32807, F4U Corsair AA33001, AA33002, P47-D Thunderbolt and P51D Mustang AA32201, AA32202, 49303, AA32204, AA32203, E, Boxes G-E, (9) £100-150

22. Corgi Aviation Archive 1:72 Scale WWII Flying Aces, eight boxed limited edition examples, comprising 49002 Douglas Bader, 49003 Garfield Weston (both Spitfire), 49102 Stanford Tuck, 49103 F N Robertson (both Hurricanes), 49301 John Landers, 49302 Charles 'Chuck' Yeager (both P-51D Mustang) and 49202 Adolf Galland, 49203 Werner Molders (both Messerschmitt), E, Boxes G-E, (8) £100-150

23. Corgi Aviation Archive 1:72 Scale WWII Aircraft, nine boxed limited edition examples, comprising AA32801 DH Mosquito, 49505 Battle of Britain 60 year anniversary Spitfire and Messerschmitt, AA31912 2005 Collector Club Special Spitfire, AA31906 D Day 60th anniversary Spitfire, AA32012 Hurricane No 1 Squadron Through the Ages, AA31914 Spitfire Defenders of Malta, AA31911 Spitfire Polish Squadron, AA31910 Aces of the Commonwealth Spitfire and AA31915 Spitfire John A Kent, E, Boxes G-E, (9) £100-150



24. Corgi Aviation Archive 1:72 Scale WWII Aircraft, nine boxed limited edition examples, comprising AA32803 DH Mosquito, 49505 Battle of Britain 60 Year anniversary Spitfire and Messerschmitt, AA36501 Typhoon Aircraft of the MTO, AA36602 P-38J Droop Snoot Lightning Eze Does It, AA31915 Spitfire John A Kent, AA31911 Spitfire Polish Squadron, AA32814 DH Mosquito, AA31927 Spitfire Russian Air Force and AA31928 Spitfire France 1940, E, Boxes G-E, (9) £100-150

25. Corgi Aviation Archive 1:72 Scale WWII Aircraft, eleven boxed limited edition examples, comprising AA32805 D Day DH Mosquito, AA32001 Hurricane, AA31901 Spitfire, AA32801 DH Mosquito Grim Reaper, AA31904 Spitfire Libya, 49104 Hurricane with pilots notes, AA31903 Spitfire, AA32002 Hurricane night fighter, AA33003 Corsair, 49005 Spitfire with pilots notes and AA32803 D H Mosquito, E, Boxes G-E, (11) £120-180

26. Corgi Aviation Archive and Gemini Aces 1:72 Scale WWII Aircraft, a boxed collection comprising Corgi 60 year Battle of Britain anniversary models 49201 (3), 49001 (2), 49101 (3), 49004, Warbirds WB99614, WB99617, Europe & Africa AA31902, AA30701, AA32503, AA32103, War in the Pacific AA33004, AA33103 and Gemini Aces GARAF1001, GARAF1002, E, Boxes G-E, (19) £120-180



27. Corgi Aviation Archive 1:144 Scale WWII Aircraft, eight boxed limited edition examples, comprising 48204 Boeing B-17 Flying Fortress Memphis Belle, 48801 RAF Coastal Command Short Sunderland, 47302 RAF Coastal Command Avro Lancaster (2), 47301 Battle of Britain Avro Lancaster, 47304 Dam Busters Special Edition Operation Chastise Avro Lancaster AA99148 D Day 60th Anniversary set Douglas C-47 Skytrain, P-47D Thunderbolt, P-51D Mustang and 48206 B-17G Flying Fortress Sally B, E, Boxes G-E, (8) £120-180

28. Corgi Aviation Archive 1:144 Scale Military Aircraft, seven boxed limited edition examples comprising, 47112 Douglas EC-47P Skytrain USAF, 48902 Boeing B29 RAF Washington I, 47506 Lockheed Constellation USAF, 48104 Boeing C-97A Stratofreighter Military Air Transport US, 48402 Lockheed Hercules US Marine Corps Blue Angels, 47106 Douglas DC3 RAF and AA32901 Air Force One Boeing VC-137C, E, Boxes G, (7) £100-120

29. Corgi Aviation Archive 1:144 Scale Military Aircraft, six boxed limited edition examples comprising, 48505 DH Comet 4C RAF Boscombe Down, 48702 HP Victor MK2 RAF white livery (missing part of stand), 48104 Boeing C-97A Stratofreighter US Military Transport Services, 48903 B-29 Superfortress with Bell X-1 US, 47303 Royal Canadian Airforce Avro Lancaster and AA31802 Boeing B-29 Hawg Wild USAF, G-E, Boxes G, (6) £80-100

30. Corgi Aviation Archive 1:144 Scale Military Aircraft, seven boxed limited edition examples comprising, 48901 Boeing B29 Superfortress Enola Gay, 47114 Douglas Dakota IV RAF Transport Command, AA30402 Lockheed VC-121A Constellation Columbine, AA31701 Sunderland MKV RAF Norwegian Squadron, AA31303 Lockheed C-130E Hercules Royal Australian Airforce 50th Anniversary 37 Sqn 1993, 48801 Short Sunderland RAF Coastal Command and 48702 HP Victor MK2 RAF white livery, E, Boxes G, (7) £100-120



31. Corgi Aviation Archive 1:144 Scale Military Aircraft, five boxed limited edition examples comprising, Military Air Power AA31804 Tupolev TU-4 Soviet Airforce, AA30006 Douglas Dakota USAF Wethersfield Essex 1960, Thunder in the Skies 48301 Avro Vulcan Operation Black Buck, AA30005 Douglas Dakota Farnborough 1985 and Modern Warfare Collection AA31308 Lockheed DC-130A Hercules Drone Control 1973, E, Boxes G-E, (5) £80-100

32. Corgi Aviation Archive 1:144 Scale Military Aircraft, three boxed limited edition examples comprising, Modern Warfare AA32913 Boeing E-38B Sentry USAF Air Combat Command together with Military Air Power AA33504 Boeing NB-52B with X-15 Research Aircraft Edwards AFB, AA32911 Boeing VC-137A Stratolifter USAF MATS 1254 ATW Andrews AFB 1959, E, Boxes G-E, (3) £100-150

33. Corgi Aviation Archive Vulcan and Other Military Aircraft, five boxed limited edition examples 1:144 scale Avro Vulcan 48301 B2 XM607 Operation Black Buck, AA31201 B2-XM600 617 Dambusters Squadron 1973, AA31203 Thunder in the Skies K2 Tanker No 50 Squadron RAF Waddington 1982, and AA31307 Lockheed Hercules Royal Canadian Airforce 1966, together with 1:72 scale bubble packed AA34705 English Electric Canberra B2/6 Air Atlantique Historic Flight 2004, E, Boxes G-E, (5) £100-120



34. Corgi Aviation Archive 1:72 Scale Military Aircraft, four boxed limited edition examples Suez Crisis AA34701 English Electric Canberra Cyprus 1956, Unsung Heroes Vietnam McDonnell Douglas F-4C Phantom II Cam Ranh Bay AFB 1968-9 and Falkland War 20th Anniversary AA33401 Westland Sea King helicopter Royal Navy 1982-2002, AA32406 BAE Sea Harrier Royal Navy 1982, E, Boxes G-E, (4) £80-120

35. Corgi Aviation Archive 1:72 Scale Military Aircraft, four boxed limited edition examples Suez Crisis AA34701 English Electric Canberra Cyprus 1956, Unsung Heroes Vietnam McDonnell Douglas F-4C Phantom II Cam Ranh Bay AFB 1968-9 and Military Air Power AA32306 English Electric Lightning F3 1965, AA34101 Blackburn Buccaneer Royal Navy 1968, E, Boxes G-E, (4) £80-120

36. Corgi Aviation Archive 1:72 Scale Military Airpower Jet Aircraft, five boxed limited edition examples comprising Thunder in the Skies AA34104 Hawker Siddeley Buccaneer RAF Gulf War Bahrain 1991 and AA33601 Panavia Tornado RAF Honnington 1991, together with AA34103 Blackburn Buccaneer HMS Victorious 1965, AA33602 Panavia Tornado Gulf War Foxy Killer, AA34101 Blackburn Buccaneer Royal Navy 1968, E, Boxes G-E, (5) £80-120



37. Corgi Aviation Archive 1:72 Scale Military Airpower Jet Aircraft, four boxed limited edition examples comprising AA32304 English Electric Lightning RAF Binbrook 1984 and Thunder in the Skies models, AA33205 McDonnell F-4J Phantom US Navy Black Bunny, AA33206 McDonnell F-4J Phantom US Navy Bicentennial Special 1976, AA33208 McDonnell QF-4B Phantom Drone US Naval Missile Center 1972, E, Boxes G-E, (4) £80-120

38. Corgi Aviation Archive 1:72 Scale Military Airpower Jet Aircraft, four boxed limited edition examples comprising AA33201 McDonnell F-4N Phantom US Navy Sundowners Squadron 1975, AA33203 McDonnell F-4J Phantom US Navy Blue Angels 1969-73, AA32305 English Electric Lightning RAF Wattisham 1964, AA33202 McDonnell F-4J Phantom RAF 1986, E, Boxes G-E, (4) £80-120



39. Corgi Aviation Archive 1:72 Scale Military Jet Aircraft, eight boxed limited edition examples, AA35009 Gloster Meteor RAF Cyprus 1956, AA32209 F-51D Mustang 1950, AA32706 Hawker Hunter Belgian Red Devils, AA32408 Hawker Siddeley AV-8C Harrier NASA, AA32708 Hawker Hunter Swiss Air Force Aerobatic Team 1993, AA32705 Hawker Hunter Rough Diamonds Royal Navy 1967-69, AA32704 Hawker Hunter The Fighting Cocks, AA32711 Hawker Hunter No 1 Squadron 1959 (missing small components) F-E, Boxes G-E, (8) £80-120

40. Corgi Aviation Archive 1:72 Scale Helicopters, five boxed limited edition examples, AA33404 Westland Sea King RAF Air Sea Rescue, AA34203 Boeing-Vertol Chinook US Army Trails 1961, AA35903 Sikorsky Jayhawk US Coast Guard, AA33402 Sikorsky Sea King US Navy Apollo Recovery 1969 with display plinth and landing module (all appear as new) and AA33403 Sikorsky Sea King US Presidential Flight (white paintwork crazed) , F-E, Boxes G-E, (5) £120-180

41. Corgi Aviation Archive 1:72 Scale Jet Fighter Power Series Aircraft, ten boxed limited edition examples comprising, 49803 Hawker Hunter MK6, 49403 EE Lightning 1978, AA32701 Hawker Hunter Blue Diamonds, 49401 EE Lightning Firebirds 1962, AA32301 EE Lightning The Tigers, AA32404 Harrier GR1 Transatlantic Air Race, 49801 Hawker Hunter 70 Sqn, 49802 Hawker Hunter Black Arrows, AA32405 BAE Sea Harrier 1992 and Modern Fighter Legends (bubble packed) AA32409 Hawker Siddeley Harrier 1975, G-E, Boxes G-E, (10) £120-180

42. Corgi Aviation Archive 1:72 Scale Jet Fighter Power Series Aircraft, ten boxed limited edition examples comprising, AA32701 Hawker Hunter Blue Diamonds, 49401 EE Lightning Firebirds 1962, AA32301 EE Lightning The Tigers (2), AA32401 Harrier GR3 Falklands, AA32403 Hawker Siddeley Harrier US Marine Corps, AA32303 EE Lightning 1963, AA32703 Hawker Hunter Boscombe Down 1992, AA32702 Hawker Hunter RAF Brawdy 1979, 49402 EE Lightning RAF Aerobatics Team, G-E, Boxes G-E, (10) £120-180

43. Corgi Aviation Archive 1:72 Scale Jet Fighter Power Series Aircraft, nine boxed limited edition examples comprising, AA32701 Hawker Hunter Blue Diamonds, 49401 EE Lightning Firebirds 1962, AA32301 EE Lightning The Tigers (2), 49802 Hawker Hunter Black Arrows, AA32403 Hawker Siddeley Harrier US Marine Corps, AA32302 EE Lightning 1973, AA32402 BAE Sea Harrier and Modern Fighter Legends (bubble packed) AA32409 Hawker Siddeley Harrier 1975, G-E, Boxes G-E, (9) £100-140



44. Corgi Aviation Archive 1:144 Scale Frontier Airliners, twelve boxed examples comprising Lockheed Constellation 47501 TWA, 49504 KLM, 47502 Qantas, Avro York 47202 BOAC, 47203 DAN Air, Douglas C-47A Aer Lingus 47103 and Douglas DC3 47110 Air France, 47104 BEA, 47105 Eastern Airlines, 47108 KLM, 47107 Air Atlantique, 47102 American Airlines, E, Boxes G-E, (12) in two boxes £80-100

45. Corgi Aviation Archive 1:144 Scale Civil Aircraft, thirteen boxed examples comprising Classic Jetliners DH Comets 48502 DAN Air (2) one minus stand some small components and damaged interior packaging, 48501 BEA, Berlin Airlift 47101 Douglas Skytrain USAF, 47111 Douglas Dakota RAF, Avro York 47205 RAF, 47201 Skyways, Classic Propliners AA30001 DC3 Continental, 48603 Bristol Britannia Monarch, 47608 BA Vickers Viscount 806, 47609 British Midland Viscount 836, 47605 Viscount 700 British Eagle and 100 Years of Flight AA30004 Douglas DC3 Pan American 1941, F-E, Boxes F-E, (13) in two boxes £80-100

46. Corgi Aviation Archive WWII Aircraft, a bubble packed group all with card sleeves, comprising WWII Legends 1:144 Scale AA30010 Douglas Skytrain D Day, AA30011 Douglas C-47 Battle of Britain Memorial Flight together with 1:72 Scale AA31905 Spitfire Brian Lane (2), AA32207 P51D Mustang Kit Carson (2), AA33007 F4U Corsair Frederick Streig, AA33105 Mitsubishi Zero Takeo Okumura, AA31909 Spitfire Brendan Finucane (bubble pack partly crushed model E), AA31916 Johnnie Johnson and AA99182 Merlins Over Malta two plane set, E, Packaging F-E, (11) £120-180

47. Corgi WWII 1:50 Scale Tanks and Half Tracks, a group of ten comprising WWII Legends (bubble packed with card sleeves), CC60206 Panther Command Tank, CC60107 Churchill MK III Sword Beach, CC60402 M3IA Half Track US 2nd Armoured Division, and CC60006 SD KFZ 7/1 Half Track Krauss Maffei, together with boxed WWII Collection tanks Operation Barbarossa CC60102 Churchill MKIV, CC60203 Panther, CC60201 Panther, North Africa CC60104 Churchill MKIII El Alamein, CC51007 Sherman Royal Wilts Yeomanry and Western Front CC515005 Sherman French Army 1944, E, Boxes/Packaging G-E, (10) £100-150



48. Corgi WWII 1:50 Scale Military Vehicles, a boxed group of nine comprising D Day 60th Anniversary Models CC60603 Cruiser Tank MK VII Centaur IV and CC60305 Bedford QLD, Operation Barbarossa CC6001 Krauss Maffei Semi Track (2), North Africa CC55108 Diamond T Tank Transporter and M4 Sherman, CC60303 Bedford QLD, CC60004 Krauss Maffei Semi Track and Western Front CC60301 Bedford QLD, CC51707 WC51 Command Car, E, Boxes G-E, (9) £80-120

49. Corgi and Other WWII and Later Military Vehicles, a boxed group including Corgi World War II series CC51006 Sherman, CC51708 WC56 Command Car, CC51004 Sherman, CC60003 Krauss Maffei Semi Track, US50205 Marine Toys For Tots Foundation M25 A1 2.5 Ton Truck loaded with toys, Corgi Classics 55101 Diamond T Tank Transporter and M60 Tank, 55102 Diamond T980 tank transporter, D Day 50th Anniversary four vehicle set 97714 and D35/1 Battle of Britain Anniversary Set together with Amour Collection 3117 Hummer M998 and three models by Victoria, G-E, Boxes F-E, (13) £60-80



50. Corgi Forgotten Heroes Korea and Firebase Nam Models, a boxed group of eight comprising Forgotten Heroes US51003 Sherman Tank with Flamethrower, US51904 Bell H-13 helicopter, US51703 WC51 Weapons Carrier, US51601 T34 Tank, together with Firebase Nam US50302 M48-A3 Patton Tank, US50304 M48-A3 Patton Tank, US50203 M35 A1 2.5 Ton Truck and US50104 M151 A1 Mutt Utility Truck, E, Boxes G-E, (8) £60-80

51. Corgi Unsung Heroes Vietnam Military Models, a boxed group comprising US51203 AH-1G Cobra helicopter, 5041 UH 1C Huey helicopter, 50301 M48A3 tank, 50303 M48 A3 Patton Tank, US51102 M106 Mortar Carrier, 50202 M35 A1 2.5 Ton Truck (2), 50103 M151 A1 Mutt Rifle Truck and US50206 M35 Gun Truck, E, Boxes G, (9) £100-150

52. Forces of Valor 1:32 Scale Military Vehicles, a boxed group of six comprising, 86000 MKIV Spitfire 1944 with loose figure, 81100 US M16 Gun Carriage diorama with infantry, in plastic case, 81000 M4A3 Sherman Tank, 80000 King Tiger tank with loose figure, 80000 Tiger I Tank and 81000 M1036 Humvee Kuwait 1991 with loose figures, F-E, Boxes/Case F-E, (6) £100-120

53. Corgi Aviation Archive 1:144 Scale Military and Civil Aircraft, military models comprising a cased and factory sealed 49501 Battle of Britain Memorial Flight Set and boxed 48404 US Coast Guard Lockheed Hercules, 47206 French Air Force Avro York (minus part of stand) and 48103 Boeing C-97G Delaware coast guard together with 47403 Berlin Airlift Avro Lancastrian, G-E, Boxes G-E, (5) £60-80

54. Corgi Original Omnibus Trams, a boxed group including Blackpool Balloon Trams (16) and eight others one with damaged box window and a limited edition Tramlines model, G-E, Boxes F-G, (24) in three boxes £60-80



55. Corgi Original Omnibus Vintage Single Decker Buses and Coaches, a mainly cased collection some with card sleeves some factory sealed, including a number of special edition models, G-E, Cases F-E, (70+) in two boxes £200-250

56. Corgi Original Omnibus Modern Single and Double Decker Buses and Coaches, a mainly cased collection some with card sleeves some factory sealed, including a number of special edition models, G-E, Cases F-E, (55+) in two boxes £150-200



57. Corgi Original Omnibus Modern Single and Double Decker Buses and Coaches, a mainly cased collection some with card sleeves some factory sealed, including a number of special edition models, G-E, Cases F-E, (50+) in two boxes £150-200

58. Corgi Original Omnibus Modern Single and Double Decker Buses and Coaches, a mainly cased collection some with card sleeves some factory sealed, including a number of special edition models, G-E, Cases F-E, (50) in three boxes £150-200

59. Corgi Original Omnibus Vintage Double Decker Buses, a mainly cased collection some with card sleeves some factory sealed, including a number of special edition models, and five maintenance vehicles G-E, Cases F-E, (70+) £200-250

60. Corgi Original Omnibus Vintage Double Decker Buses, a mainly cased collection some with card sleeves some factory sealed, including a number of special edition models, G-E, cases F-E, (65+) in three boxes £150-200



61. Exclusive First Editions London Tube Stock, boxed models 1:76 scale comprising 1959 Central Line 80701 trailer carriage, 80501 Driving Carriage D, 80601 Motor Trailer Car and 80401 Driving Carriage A, together with Northern Line 1938 Driving Carriage A, D, Trailer Carriage , Non Driving Motor Car and an unboxed motor carriage and Bakerloo line 1938 8002 Driving Carriage A, 80302 Trailer Carriage, 80102 Driving Carriage D, 80202 Non Driving Motor Car, G-E, Boxes G-E, (13) £200-300

62. Exclusive First Editions Overseas Buses, a boxed group 1:76 scale including Australian models 27111, 27211A, 27212, 27213 18307B, 16125 and Far East Models including China Motorbus, Hong Kong Citybus 19906 Limited Edition two model City Bus set and others (16), G-E, Boxes G-E, (23) £80-100

63. Exclusive First Editions Railway Collection Trams and Wartime Buses, a boxed group 1:76 scale including Railway Collection buses and coaches (12), Wartime Buses 99207, 99205 a camouflage Leyland TD1 28504 and trams including 13404 Leeds Tram in WWII livery and a VE Day 50th Anniversary two model set, (11), G-E, Boxes F-G, (28) £80-100

64. Exclusive First Editions De-Regulation Buses and Coaches, a boxed collection of vintage and modern single and double decker buses and coaches 1:76 scale, G-E, Boxes F-E, (55+) in six boxes, £140-180

65. Exclusive First Editions De-Regulation Buses and Coaches, a boxed collection of vintage and modern single and double decker buses and coaches 1:76 scale, G-E, Boxes F-E, (70) in three boxes, £180-220



66. Exclusive First Editions London Area Buses, a boxed collection 1:76 scale of London Transport, Green line and other all double decker buses, G-E, Boxes P-G, (40) in two boxes £140-180

67. Exclusive First Editions London Area Buses, a boxed collection 1:76 scale of London Transport, Green line and other all double decker buses, G-E, Boxes P-G, (40) in two boxes £140-180

68. Exclusive First Editions London Area Buses, a boxed collection 1:76 scale of London Transport, Green line and other all double decker buses, G-E, Boxes P-G, (40) in two boxes £140-180

69. Exclusive First Editions De-Luxe Series Buses and Coaches, a boxed collection of vintage and modern single and double decker buses and coaches 1:76 scale, G-E, Boxes P-G, (60+) in three boxes, £200-300

70. Exclusive First Editions Regional Buses, a boxed collection of vintage and modern double decker buses 1:76 scale, G-E, Boxes F-G, (40) £140-180

71. Exclusive First Editions Regional Buses, a boxed collection of vintage and modern double decker buses 1:76 scale, G-E, Boxes F-G, (48) in two boxes £150-200



72. Exclusive First Editions Regional Buses, a boxed collection of vintage and modern double decker buses 1:76 scale, G-E, Boxes F-G, (48) in two boxes £150-200

73. Exclusive First Editions Regional Buses, a boxed collection of vintage and modern double decker buses 1:76 scale, G-E, Boxes F-G, (40) in two boxes £140-200

74. Exclusive First Editions Regional Buses, a boxed collection of vintage and modern double decker buses 1:76 scale, G-E, Boxes F-G, (52) in two boxes £150-200



75. Exclusive First Editions Regional Buses, a boxed collection of vintage and modern double decker buses 1:76 scale, G-E, Boxes F-G, (55) in two boxes £180-220

76. Exclusive First Editions Single Deck Buses and Coaches, a boxed collection of vintage and modern single decker buses and coaches 1:76 scale, G-E, Boxes F-G, (42) in two boxes £140-180

77. Exclusive First Editions Single Deck Buses and Coaches, a boxed collection of vintage and modern single decker buses and coaches 1:76 scale, G-E, Boxes F-G, (42) in two boxes £140-180



78. Exclusive First Editions Single Deck Buses and Coaches, a boxed collection of vintage and modern single decker buses and coaches 1:76 scale, G-E, Boxes F-G, (42) in two boxes £140-180

79. Exclusive First Editions Single Deck Buses and Coaches, a boxed collection of vintage and modern single decker buses and coaches 1:76 scale, G-E, Boxes F-G, (40) in two boxes £140-180

80. Exclusive First Editions Single Deck Buses and Coaches, a boxed collection of vintage and modern single decker buses and coaches 1:76 scale, G-E, Boxes F-G, (52) in two boxes £180-220

81. Exclusive First Editions Single Deck Buses and Coaches, a boxed collection of vintage and modern single decker buses and coaches 1:76 scale, G-E, Boxes F-G, (48) in two boxes £180-220

82. Exclusive First Editions Single Deck Buses and Coaches, a boxed collection of vintage and modern single decker buses and coaches 1:76 scale, G-E, Boxes F-G, (48) in three boxes £180-220

83. Exclusive First Editions Vintage Double Decker Buses, a boxed collection of 1:76 scale models including a quantity of Code 3 special edition examples, All Sorts, Cobham Bus Museum, London Toy and Model Club, PSV, Bromley Pageant, National Garden Festival and others, G-E, Boxes P-G, (90) in three boxes £150-200

84. Exclusive First Editions Code 3 Special Edition Buses and Coaches, a boxed collection of vintage and modern double and single deck buses and coaches 1:76 scale including, All Sorts, Ramblers Association, Penguin Studio, Amersham Rallies, London Bus Repaints, Southsea Spectacular, EFE Show Buses, Silver Star, London Transport Museum, Ribble Enthusiasts, Country Bus Rallies, Aston Manor, Manor Models, Manchester Museum, Sutton United and others, G-E, Boxes P-G, (54) in three boxes £200-300



85. Exclusive First Editions Code 3 Special Edition Buses and Coaches, a boxed collection of vintage and modern double and single deck buses and coaches 1:76 scale including, All Sorts, Ramblers Association, North Weald, Amersham Rallies, Cobham Bus Museum, Southsea Spectacular, EFE Show Buses, Heddingham Models, Beatties Specials, Country Bus Rallies, Sutton United, London Transport Museum, London Omnibus and Traction Society and others, G-E, Boxes P-G, (44) in two boxes £150-200



86. Exclusive First Editions Gift Sets and Two Model Sets, a boxed collection of mainly vintage buses and coaches 1:76 scale including Maidstone & District Gift Set, 80th Anniversary South Down 4th Model Collector Gift Set, Southdown Gift Set and Liverpool Corporation Model Set, together with twelve other two model sets, G-E, Boxes F-E, (16) £80-100



87. Exclusive First Editions Gift Sets and Two Model Sets, a boxed collection of mainly vintage buses and coaches 1:76 scale including Maidstone & District Gift Set, 80th Anniversary South Down 4th Model Collector Gift Set, Last Days of the Southdown Gift Set, LTM 2000 gift set, Tate & Lyle Story, LTM Limited Edition Bus Set, Green Line Bus Set 5, Rank Hovis Story, LTM Bus set 6, Beatties London Transport set No 1, LTM Bus set 4 and Liverpool Corporation Model Set, G-E, Boxes G-E, (12) £60-80

88. Exclusive First Editions Gift Sets and Two Model Sets, a boxed collection of mainly vintage buses and coaches 1:76 scale including Maidstone & District Gift Set, 80th Anniversary South Down 4th Model Collector Gift Set, Last Days of the Southdown Gift Set, Taylor Woodrow Story, LTM Bus Set 12, Green Line Bus Set 5, London Transport Collection, LTM STL Bus set 9, Aldershot & District Gift set, LTM Bus Set 12, Southdown Gift Set, Routemaster Bus Set 3 and Country Buses Set 2, F-E, Boxes G-E, (12) £60-80

89. Exclusive First Editions Commercial Vehicles, a boxed collection of haulage vehicles 1:76 scale, including Commercials (45), Grocery Series (6), Brewery Series (9), Railway Collection (10), De Luxe Series (16) four three model sets and others (40), together with two boxed twin car sets, G-E, Boxes F-G, (120+) in eight boxes £200-250

90. Britbus 1:76 Scale Buses, a boxed/cased group mainly Southdown comprising N6001 (4) in two liveries one minus card certificate, N6002, N6003 (2), LOO3 and N6005 (cased with sleeve), together with London Country AS2-08, City of Southampton GL 01, City of Lincoln GS 06 B and China Motorbus in case with sleeve AS 1005, all bar one with card certificates, E, Boxes G-E, (13) £100-150

91. Creative Master Northcord Buses and Coaches, a cased group of twelve 1:76 scale all with card sleeves some factory sealed, including UK models 1009, 1008, 1006, 1005, 2001, 1004, 1007, 3018, 3019, 3009 and 3020, E, Cases G-E, (11) £150-200

92. ABC Models Far Eastern Buses, a boxed group of eight double deck models 1:76 scale comprising, LE 0103B silver Millennium bus, 000404A, 000101, 000502, 000511, 000401, 000402 and 000801, some with packaged wing mirrors, E, Boxes G-E, (8) £80-120

93. ABC Models Far Eastern and UK Buses, a boxed group of nine double deck models 1:76 scale comprising Far East 000403B limited edition Leland Victoria in plastic case, 000401, 000512, 000202, 000102A, 000111 and 000801, together with two West Midlands UK models TRA 5005 and 0001 front engined bus, some with packaged wing mirrors, E, Boxes G-E, (9) £80-120



94. Collector's Model Far Eastern Buses, a boxed collection of 1:76 scale double decker buses including a silver and gold plated Dennis Dragon Condor and others in various liveries including Bridgestone, Bosch Caltex and others, E, Boxes G-E, (21) £100-150

95. Collector's Model Far Eastern Buses, a cased collection (three minus card sleeves) of limited edition 1:76 scale double deck buses in various liveries including Canon, Ocean Park, Milka, Siemens, Kodak and others many with packaged accessories, E, Cases G-E, (28) £120-160

96. Far Eastern Buses By Drumwell and New World First Bus Services Ltd, a cased collection all with card sleeves of 1:76 scale double deck models in various liveries including Drumwell DW10201 (2), DW10104 (2) one with detached component, DW10204 (2), DW10202, DW10302, DW10103, DW10105, DW10301 and NewWorld First Bus Millennium Bus, Heritage Collection DM28, Snake Bus of Bliss, G-E, Cases G-E (14)
£100-150

97. Far Eastern Buses By Drumwell and New World First Bus Services Ltd, a cased collection all with card sleeves of 1:76 scale double deck models in various liveries including Drumwell DW10201 (2), DW10104, DW10204 (2), DW10103, DW10304, and NewWorld First Bus Dennis Condor NWFB Online, NWFB TKO Route 796A, NWFB Euro III Bus, NWFB Dennis Dart SLF, Dragon Bus of Prosperity, Snake Bus of Bliss, E, Cases G-E (13)
£100-150



98. Corgi 1:76 Original Omnibus KMB Models, 43225, OM43201, 43215 (2), 43226 (2), 44506, 43221, 44403, OM44801, 44301, OM45108, in original cases, E, cases G-E (12)
£60-80

99. Corgi 1:76 Original Omnibus KMB Models, 43226, 43208 (2), 44405, 44403, 42808, 44802, 43223 (2), Victory Mk2 Series 2 and two others, in original cases, E, cases G-E (12)
£60-80

100. Corgi 1:76 Original Omnibus Citybus Models, 43205 (2), 44503, 44701, 44510 (2), 44513, 44502, 44501, OM44501, 44504, OM45403, in original cases, E, cases G-E (12)
£60-80

101. Corgi 1:76 Original Omnibus Citybus Models, 44302 (4), 44504 (2), 42707, 42803, 43204, 44507, 44701, OM44501, in original cases, E, cases G-E (12)
£60-80

102. Corgi 1:76 Original Omnibus First Bus Models, in original cases, E, cases G-E (12)
£60-80



103. Corgi 1:76 Original Omnibus Citybus Models, 43012, 44603 (2), 44512, 44601, OM44501, OM45801, 43605 (2), 44509, 44513, 44503, in original cases, E, cases G-E (12)
£60-80

104. Corgi 1:76 Original Omnibus KCR & CMB Models, 44801, 43210 (2), 43206 (2), 43202 (4), CMB A20 Airport Express To Central (3), in original cases, E, cases G-E (12)
£60-80



105. Corgi 1:76 Original Omnibus KMB & Citybus Models, 43220, 43222 (2), 43224, OM44801, OM45402 (2), 44509, 43214, 44603 and two others, in original cases, E, cases G-E, one cracked (12)
£60-80

106. Corgi 1:76 Original Omnibus Models, 43202 (3), 43201 (2), 40407, KCRC Olympian (2), Super Bus Alexander Bodied Volvo Olympian (2), KMB Trident Duple Metsec, First Bus Alexander Bodied Volvo Olympian, Duple Metsec Bodied Dennis Trident, in original boxes, E, boxes F-E (13)
£60-80

107. Corgi 1:76 & 1:64 Model Buses, including Original Omnibus 45004 (2), 45006, 45005, 40407, 40408 (2), 41904, Corgi Classics 91710, 91707, 45007, 324-01 and two others, in original boxes, E, boxes F-E (14)
£60-80

108. Cars Workshop 1:76 Model Buses, 38601 (2), 38102, 38001, 38002, 38202, in original cases, E, cases G-E (6)
£100-150



109. 1:76 Model Buses, including MBE (3), ABC Models (4), Creative Master Northcord (2), Buses Model Co (2), Club Bus Rama and two others, in original packaging, E, packaging F-E (14)
£100-150

110. A Sun Star 1:24 Routemaster No.2906, SRM 25-850 DYE, Queen's Silver Jubilee-Woolworth, in original box with certificate and unused accessories, assumed E, unopened, box VG
£60-80

111. A Sun Star 1:24 Routemaster No.2907, RM 2191 - CUV 191C, Shillibeer - Watney's, in original box with certificate and unused accessories, VG, however fatigue has damaged screws so top deck is loose at one end, box VG
£30-50

112. A Sun Star 1:24 Routemaster No.2903, RM664 - WLT 664, The Silver Lady with unpainted body, Daily Express, in original box with certificate and unused accessories, E, box VG
£60-80



113. A Sun Star 1:24 Routemaster No.2901, RM8-VLT 8, The Original Routemaster, London Transport, in original box with certificate and unused accessories, E, box VG
£80-120

114. A Sun Star 1:24 Routemaster No.2902, RM254-VLT 254, The Standard Routemaster with quarter-drop front windows, in original box with certificate and unused accessories, assumed E, unopened, box VG
£60-80

115. A Sun Star 1:24 Bedford OB Duple Vista Coach 5001, 1947 FDK 571 Yellowway Motor Services, in original box with certificate and unused accessories, E, box VG
£50-70



116. Corgi Original Omnibus 1:76 Scale Buses and Coaches, a cased collection mainly without sleeves of vintage and modern single and double deck buses, coaches and service vehicles, G-E, Cases F-E, (30)
£100-120

117. Exclusive First Editions 1:76 Scale Buses and Coaches, a boxed collection of vintage and modern single and double deck buses and coaches, De Luxe Series (6) and others including De Regulation and EFE Show bus models (56), G-E, Boxes F-G, (60+) in two boxes
£180-220

118. Corgi Original Omnibus Trolley Buses and Maintenance Vehicles, a cased collection some in card sleeves some factory sealed including Trolley buses (22) and maintenance vehicles (6), G-E, Cases F-E, (28)
£80-100

119. Corgi Classics OB Coaches, a boxed collection of mainly UK OB Coaches, together with a Malta example and a Code 3 model by Bypost Cresta, G-E, Boxes G-E, (26)
£80-120

120. Corgi Classics OB Coaches, a collection of UK OB Coaches all in grey boxes, G-E, Boxes F-G, (37) in two boxes
£60-80

121. Corgi Classics Coaches, a boxed collection of vintage UK coaches including Public Transport Premium edition models, AEC Regals, Bristol Duple, Leyland Tiger, Albion Valiant, Burlingham Seagull, Bedford OB sets, Dennis Lancet, Leyland Leopards, 34901, 97741, 97189, 97185, 97191, 33302, 97901 (2), 97172, 33301, 33302, 33101, 97750, 97079, G-E, Boxes F-G, (14)
£60-80

122. Corgi Classics Double Deck Buses and Trams a boxed collection of vintage UK buses including two vehicle set and Public Transport premium edition models Guy Arabs, AEC Routemaster, Leyland Atlantean, Karrier Trolleybus, Fully Closed Tram, Leyland Olympian and a 35006 Beatles Collection Liverpool Corporation AEC Routemaster, 97199, 97198, 97203, 97202, 35009, 97205, 97204, 97052, 34703, 97204, 97209, CC25501, 97201, 36703 and two Royal Mail models, G-E, Boxes F-G, (16)
£60-80

123. Corgi Classics Buses and Coaches, a boxed collection of vintage double and single deck buses and coaches including two vehicle sets and Public Transport premium edition models Leyland Leopard, Guy Arab, Leyland Tiger, Bedford OB and AEC Regal, D41/1, 97075, 97077, 34802, D4/1, 97192, 97194, 97181, 97061, 97070, 97076, 97063, G-E, Boxes F-G, (12)
£50-80

124. OC Classics 1:24 Scale Bedford OB Coach, a boxed factory packaged model in Royal Blue livery limited edition with certificate 391/500, E Boxes G-E
£50-80



125. A Sunstar 1:24 Scale Routemaster, a boxed 2905 RM 686-WLT 686 in Vernon's Pools livery, limited edition with certificate 0555/2,999, factory packaged with factory sealed accessories, E, Box G-E
£80-120

126. A Sunstar 1:24 Scale Routemaster, a boxed 2904 RMC 1453-453 CLT in Green Line livery, limited edition with certificate 4645/5000 factory packaged with factory sealed accessories, E, Box G-E
£80-120

127. Corgi Vintage Glory of Steam, a boxed group of ten 1:50 scale limited edition models comprising CC12511 Atkinson Borderer, Garrett examples 22402, 80307, 80305, Sentinel 80002 and Fowler 80101, 80108, 80103, 80110 and 80102, E, Boxes G-E, (10)
£100-120



128. Corgi Vintage Glory of Steam, a boxed group of 1:50 scale limited edition models comprising Foden 80202, 80205, 80201, 80204, Garrett CC20302 (Premium Edition), 80304, 80302, 80303, 80301, Sentinel 80006, 80005, 80003, 80001, 80004, 80010 and Fowler 80106, 80105, CC20105 (Premium Edition), 80112, 80109, 80111, 80104, E, Boxes G-E, (22) in two boxes
£150-180

129. Corgi Haulage Vehicles, four boxed 1:50 scale examples CC99154 Moreton G Cullimore A Dickensian Tale two piece set, 31009 Heavy Haulage Wynns Diamond T Ballast with trailer, Heavy Haulage 31007 Annis & Co Diamond T Ballast with trailer and locomotive and CC12506 Wynns Atkinson Venturer, and two unboxed 1:50 scale heavy haulage resin generators, G-E, Boxes G-E, (6) £80-120



130. Corgi Haulage Vehicles, five boxed 1:50 scale examples CC12211 Fagan & Whalley Scania, CC12803 Maguire's Scania, 75606 James Irlam Renault, CC12005 Pulleyn MAN Fridge trailer and 55801 Guinness Kenworth, E, Boxes G-E, (5) £80-120

131. Corgi Haulage Vehicles, five boxed 1:50 scale examples, 75901 Cyril Knowles Leyland DAF, 75902 Blue Circle Cement 75902, CC12008 B J Waters MAN Bulk tipper, 74901 Rugby Cement ERF Tanker and US51403 Sulley Trucking International Transtar, E, Boxes G-E, (5) £60-80



132. Corgi Eddie Stobart Haulage Models, a boxed collection of vintage and modern vehicles CC13201 DAF Curtainside (2), 76901 30th Anniversary five tractor unit set, CC12405 Volvo Tractor, CC19901 blue curtainside trailer (not Stobart), 23203 Bedford TK, 59601 Ford Cargo box van, 97369 AEC truck and trailer, 23602 Albion platform lorry, 29103 Guy Invincible and 20903 AEC platform lorry, E, Boxes F-E, (11) £100-150



Lot 135

133. Corgi Pickfords Haulage Models, a boxed collection of vintage vehicles, 17701 Scammell Constructors, 52201 Diamond T Ballasts with trailer and load, 18002 Scammell Contractor with Nicholas Bogie Trailer, and Casting Load, 17904 Scammell Contractors, DT4/1 three vehicle set, 16702 Scammell Highwaymen low loader, 30501 Thames Trader platform trailer and load, CC11411 Bedford Luton and 30309 Thames Trader box van, E, Boxes G-E, (9) £100-120

134. Corgi Haulage and Commercial Models, a boxed collection of vintage vehicles 97892 S Houseman AEC Mercury, Kings of the Road AEC Ergo platform trailer Willmott's Transport, Building Britain 31008 Wimpey set, 16305 Tunnel Cement Scammell Highwayman and 21501 Limmer & Trinidad AEC Dropside, 5604 Guinness Diamond T box Van, 21302 Road Services AEC and 97950 Foden Tanker, Heavy Haulage 16901 Hallett Silbermann Scammell, 97955 Foden G & C Moore Ltd and Harris & Miners The Final Chapter two vehicle set CC99131, E, Boxes G-E, (11) £60-80

135. Corgi Haulage and Commercial Models, a boxed group of thirteen including CC99131 Harris & Miners The Final Chapter two model set, Albion 26101 D W Ward of Stirling (2) and 26201 T W Davidson Jnr, Guy Warrior 29001 Dee Valley (2) 29201 BRS (2) and Guy Invincible 29301 Arthur R Duckett and 29101 Blue Circle Cement (3), E, Boxes G-E, (13) £60-80

136. Corgi Haulage and Commercial Models, a boxed group of eleven including Premium Edition Scammell CC10704 Westfield Transport and CC10702 Manbre & Garton, Fleets of Renown 26102 Tyson Burrbridge Albion and 23301 Pollocks Ford Transcontinental, Tippers CC10102 Kirby & Perry Foden and British Road Services CC13105 Volvo F88, CC11605 Leland Comet, together with 25001 BR Leyland Beaver, 17901 BRS Scammell Wrecker, CC12512 BR Atkinson Borderer and CC11504 Spiers AEC Mammoth, E, Boxes G-E, (11) £80-120

137. Corgi Haulage and Commercial Models, a boxed group of thirteen comprising Heritage Collection EX51704 Dodge with Pinder grizzly Trailer, EX70904 Renault With Dunlop trailer, EX51705 Dodge with Pinder Trailer and 72913 Simca BP Tanker, Heavy Haulage 16901 Hallett Silbermann Scammell, Whisky Collection 11401 ERF KV Black & White Whisky, US/Canadian Road Transport 55901 Diamond T Motor Corp, 5631 Richfield Diamond T620 and 56203 Supertest Diamond T semi tanker, together with Corgi Classics 21201 Mackintosh's AEC truck, 21301 Ferrymasters AEC, 19701 AFS Bedford and 16401 Siddle C Cook Scammell, E, Boxes G-E, (13) £80-120

138. Corgi Haulage Models, a boxed group of 1:50 scale limited edition models comprising CC1270 Stoford Transport ERF, CC12505 Richard Preston Atkinson Borderer, 75302 Jet Leyland Tanker, 74902 A.J.A. Smith ERF Tanker, 75902 Bluer Circle Cement Leland Tanker, Hayes Transport CC12801 Scania Tanker (2) and Eddie Stobart CC12901 Scania Topline (2), E, Boxes G-E, (9) £100-150



139. Corgi Haulage Models, a boxed group of 1:50 scale models comprising US55705 Kenworth W925 with King Trailer and Crusher Load Interstate Haulage, 31013 A.L.E. Scammell Contractors with Nicholas Trailers and Slug Catcher Load, 18002 Pickfords Scammell Contractors with Nicholas Bogie Trailer and Casting Load, 50702 Mack Truck with Fruehauf trailer Schaefer Brewing Co and 53502 Mack B truck Campbell 66 Express Inc, G-E, Boxes G-E, (5) £80-120

140. Corgi American Fire Service Vehicles, a boxed collection of vintage and modern vehicles including Die Cast Collectibles 53602 Mack B Wrecker, Premier Models US53802 Mack CF, US52307 Mack B, US50501 Seagrave, US50802 Seagrave and US52207 E One, Heroes Under Fire US50506 Seagrave, Fire Heroes CS90046, CS90045, CS90055 and Classics 97320 La France, 52204 E One (windscreen wipers detached), 54506 GM 5300 Command center, 52601, 51201, 51301, 98486 and 97389, F-E, Boxes F-E, (18) £80-120



141. Corgi and Matchbox Models of Yesteryear Fire Service Vehicles, a boxed collection of vintage and modern vehicles including Corgi UK models Nine Double Nine CC02302, CC13001, CC13003 and Classics 97392, 98165, 20201, 07407 (2), 21901, 96854, 97337, 98475 together with Matchbox Fire Engine Series (9) and a Siku 4115 French Magirus fire tender, G-E, Boxes G-E, (22) £60-80

142. Corgi Classics Commercial Vehicles, a collection of vintage commercial vehicles including buses, haulage and delivery models all in grey boxes, G-E, F-G, (120+) in three boxes £180-220



143. Corgi Classics and Similar Commercial Vehicles, a boxed collection of mainly prewar vehicles including Queens 40th Anniversary models (6), Cadburys (2), Transport of the 1930s, Bryant & May set, Kay & Co set, Transport Thorough the Ages C88, Ford C90, Whitbread D94/1, Ford 80074 and other individual models, G-E, Boxes F-G, (25) £60-80

144. Corgi Classics and Similar Commercial Vehicles, a collection of mainly pre-war vehicles including C89 Sixty years of Transport, Transport of the 1930s, John Smiths 97742, Charringtons D52/1, Whitbread 97755, LMS 97754, Terrys 97753, Whitbread D94/1, Shell D17/1 and D9/1, Ford 80074, Yellowstone 97049 and other individual models, G-E, Boxes G, (18) £60-80

145. Corgi Classics and Similar Commercial Vehicles, A collection of pre and postwar vehicles including Royal Worcester (3), D72/1 Minors and Populars (2), Slumberland Q57/1, C91 Morris Minor Vans, D23/1 Ford Popular Vans, 33804 Guinness OB, 26001 Ballantine's, 97334 Lucozade Atkinson, 16302 Esso Tanker, 31006 Wynn's, CC13307 Brewer & Turnbull, 97084 Grattan's, 97086 Freeborns, 18402, 10201, 71101, 96895, 97088, 98457, 05901, 96888, 98458 and 50th Coach Rally OB, G-E, Boxes F-E, (26) £80-100



146. Modern Diecast Commercial Vehicles, a boxed collection of postwar and modern models including Corgi Classics (13), 469 Routemaster, 58901 Street Sweeper, Royal Mail 207D Van and three others, Dinky 289 Routemaster, Vanguard by Lledo Ever Ready Leyland van, Matchbox Models of Yesteryear A Taste of France and tow by Vitesse, F-E, Boxes F-G, (25) £60-80

147. Modern Diecast Emergency Vehicles, a boxed collection including Collectors Model CSM UK Police Vans in plastic cases with card sleeves (4), Vanguard by Lledo police cars (4) and Corgi Americas Finest US33409 Sikorsky Sea King LA County Sheriff 1:72 scale, Nine Double Nine ambulances (3), and Corgi Classics police cars including D75/1 Cars of the 1960s set (3), G-E, Boxes/Cases G-E, (15) £60-80



148. Matchbox Dinky Collection, all boxed private and commercial vehicles including DY-902 Classic Sports Cars Series 1 on display plinth, DY-S17 Triumph Dolomite and DY-S17 1950 OB Mercedes Benz, some models loose in boxes, G-E, Boxes P-G, (46) £100-150



149. Modern Diecast Vehicles, a collection of postwar private vehicles including boxed examples, Corgi Classics (green box 9) and grey box (3), Corgi Cars of the 1950s (6) and 802 Mercedes 300SL, (some loose in boxes), together with Vanguard by Lledo (7) and Matchbox Collectibles Platinum Edition (6) in tins, F-E, Boxes P-G, Tins G-E, (32) in two boxes £60-80

150. Modern Diecast Vehicles, a boxed/cased collection of postwar private vehicles examples by Vitesse (9) Vitesse Millennium Collection (4), Corgi Classics in plastic cases (5), 94060 Corgi James Bond Aston Martin, Corgi Classics including 97690 Ferrari Trophy Set, D53/1 Four Rally Car Set, 97680 Jaguar E Type set, 96570 Chevrolet Bel Air and others including Corgi, Elicor, Solido Detail Cars and Road Legends (7), G-E, Boxes/Cases P-G, (30) £60-80

151. Modern Diecast Vehicles, a boxed/cased collection of prewar mainly private but including some commercial vehicles examples by Solido (10) includes two Renault buses, Elicor (10), Ixo (2), Vitesse (3), Rio (9), Brumm (6) includes competition models), Corgi Collectors Classics and two others, F-E, Boxes/Cases P-E, (46) in two boxes £80-100

152. Modern Diecast Vehicles, a boxed collection of mainly prewar private and commercial vehicles, including Lledo and similar (60) including two Trackside examples, Matchbox Pills Potions and Powders Set, Matchbox Originals (carded) limited edition (5) Atlas Editions Dinky Triumph factory sealed with magazine, and others (5) G-E, Boxes P-E, (70+) in two boxes £50-60

153. Matchbox Models of Yesteryear, a large boxed collection of vintage mainly prewar private and commercial vehicles including a number of special edition examples including YS-46, Y10, YS-38, YS-9 (2), YS-16, YS-43, Cased Connoisseur Collection, YY-942 Leyland Titan montage in glazed case and YY-908 Yorkshire Steam Wagon montage also in glazed case, G-E, Boxes F-E, (230+) in seven boxes £300-400

154. Laurel and Hardy 1:18 Scale Models and Others, a boxed group including Gateway Global 1:18 scale Laurel and Hardy 01064 Laurel & Hardy Go to Sea and 01063 Laurel & Hardy in a Willys Jeep, together with Universal Hobbies 1:18 Scale 4315 Ford Model T, Corgi Aviation Archive 1:32 scale AA34503 Wright Flyer, and a Gilbow E10004 RMS Britannic 1:1750 scale, G-E, Boxes G, (5) £50-80



155. 1:18 and Similar Scale Vintage Cars, boxed models comprising 1:16 scale Tonka Polistil 01668 Spyder, 01686 BMW 328, 01868 Morgan and Polistil 01103 Alfa Romeo, Burago 1:18 scale 3034 1957 Corvette and 1:24 Scale 1509 Burago Mercedes SSK, together with unboxed 1:18 scale models by Burago (7), F-E, Boxes P-G, (13) in two boxes £50-80

156. Modern Mainly Larger Scale Diecast Vehicles, a boxed group including 1:18 scale Burago 3030 Dodge Viper and 3302 VW beetle and Maisto 1:18 scale motorbikes and moped one loose in box (7), 1:18/1:16 scale models by Tonka Polistil Porsche 959 02221 and 911 Turbo together with smaller scale models Matchbox US truck and trailer, 1:32 scale New Ray Renault and MAN trucks (one loose in box) and Action Collectables UPS truck also 1:32 scale and four cased rally cars 1:24 scale by Dickie, G-E, Boxes/Cases F-E, (19) £50-80

157. Modern Diecast Sports Cars, a 1:43 scale cased collection with card sleeves of mainly vintage sports cars Ferrari, Mercedes, Lamborghini, Shelby Cobra, AC Cobra and others including Bang (5), Top Model (4), Model Box (2), Kyosho (2), Schuco, Best Model, Macadam Mini, Progetto K, Mlnichamps and a Corgi Precision Cast Classics G50021 Jaguar MK II, G-E, Cases F-G, (19) £80-120



158. Modern Diecast Competition Cars, a cased/boxed 1:43 scale collection of vintage and modern competition models rally, endurance and Formula, examples by Progetto K (2), Vitesse (5), Best Model (3), Onyx (7), Detail Cars (2), Max Models (2), Top Model (2), Model Box (2), Minichamps (2), Bang, Jouef and Corgi Donnington Collection and 04415 Eddie Stobart Mini, G-E, Cases/Boxes F-G, (31) £100-150

159. Modern Diecast Vehicles, a boxed/carded collection of modern mainly private vehicles including a 1:16 scale rally Mini Cooper by Sunnyside, and 1:24 scale Williams F1 Nigel Mansell, together with smaller scale models by Vitesse (4), Detail Cars (3), Minichamps, Herpa, Corgi, Schabak, Trofeu, Schuco, Maisto and Collezione, together with a Lledo Only Fools and Horses Reliant and Corgi James Bond 1:64 scale models (3), G-E, Boxes F-E, (21) £50-60

160. Modern Diecast Vehicles, a boxed/carded/bubble packed collection of private and commercial vintage and modern vehicles in various scales including Cararama (60), Newray, Burago, Maisto, Schuco and others (65) G-E and a boxed Corgi haulage model (fatigued), P-E, Packaging F-E, (120+) in four boxes £60-80

161. Corgi 1980s Competition Models, a boxed collection of mainly Formula series models comprising 150, 151 (2), 152, 153, 152, 155, 156, 158, 159, 160, 161 and 397, F-E, Boxes P, (13) £50-80

162. Diecast Old Time and Prewar Vehicles, boxed models including Matchbox Models of Yesteryear by Lesney No 1,6,8,10,11,15 and other later issues (17), Corgi Classics 9041 Silver Ghost (2) one unboxed, a USSR Russo Balt limousine, and boxed Charbens Old Timers Miniature Series (7), together with unboxed Lesney Matchbox Models of Yesteryear (5) and Corgi Classics 1915 Model Ford and 1910 Daimler, F-E, Boxes F-G, (35+) £80-100



163. Corgi Fairground Circus and Live Steam Models, a boxed collection including Dibnah's Choice steam models 80308 (2), 80113 and CC20101, a Millennium Collection 80107 Fowler B6 Showman's Engine, Fairground models CC20104 Fowler Showman's and CC10706 Highwayman both Carters Steam Fair, Showman's Range 15901 Anderton & Rowland's Highwayman with Dodgem Trailer, 16101 John Crow Scammell, 27801 Andertons & Rowland Atkinson truck, 24801 Silcocks Leyland truck and caravan, Premium Edition John Thurston Diamond T and York Fair two vehicle set, together with Circus model CP10502 Royal Mail circus set, G-E, Boxes G-E, (14) £80-120

164. Billy Smart's New World Circus Models by Adrian Towner's World of Miniatures, two boxed limited edition white metal models comprising BSC7 Foden FG6/15 flat bed with certificate 008/250 (one wing mirror detached) and BSC001 Austin K6 Van also with certificate 006/250, G-E, Boxes G, (2) £50-80



165. Exclusive First Editions Commercial Models and Similar, unboxed EFE 1:76 scale commercial models (45) and buses (3) Original Omnibus buses (7) and Corgi Bedford OB 1:50 Scale (2) together with a collection of empty EFE boxes, G-E, Boxes F-G, (Qty) in two boxes £80-120

166. Unboxed/Playworn Vintage and Modern Diecast Vehicles, private and commercial vehicles including playworn models by Matchbox, Corgi and others incomplete white metal models and unboxed models by Matchbox Models of Yesteryear, Solido, Rio, Corgi and others (120+) and a number of empty Models of Yesteryear boxes and Solido display cases, P-E, (Qty) in four boxes £60-80

167. Postwar and Later Military and Other Vehicles, an unboxed group including Dublo Dinky Bedford flat truck (2) with differing wheels, Dinky 289 Routemaster, 670 Armoured Car (3), 688 Artillery Tractor, Reconnaissance Car 152b and French Dinky 80 F Ambulance Militaire together with Britains Field Guns (2), Corgi AMX 30D Recovery Tank and a Matchbox Lesney No 21 Bedford Duple Coach, F-G, (12) £60-80



168. Peter Lloyd Models Code 3 Novelty Models, a collection of novelty vintage commercial models 1:43 scale by Peter Lloyd Models mainly in plastic display cases, G-E, Cases G, (37) £200-300

169. Plastic Vehicle Kits and Models, unmade kits including Airfix 1:32 scale 6442 1914 Dennis Fire Engine, factory sealed Heller 1:200 scale 612 sail and steam vessel Fauvette and Dapol 1:32 scale Highway Pioneers C109, C101, C100, C119, C115, all appear complete but unchecked, together with Dapol C107 (started), Monogram snapitite 1:24 scale Corvette 1410 (started) and a number of plastic models and constructed kits, mainly military, unboxed some with damage, P-E, Boxes F-E, (Qty) £40-60



170. Military Unmade Plastic Kits, a boxed group comprising Matchbox 1:32 scale factory sealed PK-505 Tiger Moth and PK-502 Messerschmitt, together with Revell 1:32 scale H-248 Harrier, 1:35 scale Revell/Italeri H-2106 Opel Blitz truck and Italeri factory sealed 204 Kangaroo armoured vehicle, all appear complete but unchecked, G-E, Boxes F-E, (5) £50-60

171. Civil Aircraft Plastic Kits and Desk Ornaments, a boxed group comprising Matchbox 1:32 scale PK-507 Puma helicopter, Airfix 3175 Lufthansa 737 1:144 scale and Landex 1:200 scale Singapore Airlines 727 (2) and 300-13 1:288 scale Singapore Airlines 747, together with snap together BA plastic desk ornaments 747-400, 747-200, DC10 and Concorde, all appear complete but unchecked, G-E, Boxes G, (9) £50-60

172. Action Man Racing Set and Others Toys, a boxed trio, Polistil/Hasbro Action Man racing set 04469 appears complete with two cars and card cityscape, a Stylophone with instructions (untested) and Pelham Puppet Witch (strings tangled), F-G, Boxes F-G, (3) £30-40



173. Britains Herald Plastic Floral Miniature Garden, various items including flower beds with flowers (15), card paving slabs, (30), grass, pond, greenhouse, swing chair, lattice fence, rockery, dovecote, bird bath, sun dial, and bricks and vegetable beds, runner beans, cauliflowers, sprouts, pergola, cold frame, seed trays, plant pots, gardener with barrow, mower, roller and tools, G-E, (Qty)
£60-80

174. The Little Band Man Company Lead Band, a 21 piece guards marching band dressed in red tunics in original box, G, Box G-E
£40-60

175. 25mm White Metal Warrior Miniatures, all with painted details comprises, Waterloo British Rifles red tunics (25) and green tunics (20), French Rifles (20), British Dragoons red tunics (21), Russian Infantry (31), Mamluk Cavalry (5) and a box of spare figures some damaged, together with 40mm US Civil War Union Infantry (15), F-G, (Qty)
£40-60

176. Wrenn N Gauge Micro Model Set 2, a boxed freight set includes electric Bo-Bo E3185 with pantograph, four goods wagons, track and controller, G, Box G
£40-60



177. Graham Farish by Bachmann N Gauge Diesel Locomotives, two cased examples both with card sleeves, 371301 Class 56 56074 Kellingley Colliery in Load Haul Livery and 371228 Class 57 Freightliner Challenger 57011 in Freightliner livery, E, Cases G-E, (2)
£80-120

178. Graham Farish by Bachmann and Dapol N Gauge Diesel Locomotives, three cased examples all with card sleeves, comprising Farish 371003 Class 08 Shunter 13365 BR green and 371-126 Class 33 33021 Eastleigh in red Fragonset livery, together with Dapol ND008 Class 73 73138 in BR Blue, E, Cases G-E, (3)
£80-120

179. British Railway N Gauge Coaching Stock By Graham Farish, a boxed group of coaches all in blue/grey livery includes 0815 (2) one with minor damage, 0755, 0805 (2), 0725, 0776, 0777, 0778 (2) and 0685 K, G-E, Boxes G, (11)
£60-80

180. British Outline N Gauge Locomotives and Freight Stock, various items including unboxed Graham Farish 47313 tank locomotive in BR black and another similar, unboxed goods wagons eight weathered covered plank wagons by Peco and a three tank wagons (one by Peco), three Graham Farish goods wagons and two large tank wagons, together with a boxed Farish 4101 maroon GUV van and eight boxed Peco KNR-40 plank wagon kits and a small quantity of Peco track a boxed double slip and loose track including crossovers, spurs and straights, F-E, Boxes G, (Qty)
£50-80



181. Continental N Gauge Electric Locomotives by Arnold and Lima, two cased examples by Arnold 2417 Re 11156 of the SBB in green livery and 2385 Rail Car 1403 also of the SBB in green livery, together with an unboxed Lima 163945 three car train minus one pantograph with some wear in cream and maroon livery, P-E, Cases G-E, (5)
£60-80

182. Fleischmann and Minitrix Electric Continental N Gauge Locomotives, two cased examples a Minitrix 12117 E93 of the DB in green livery and Fleischmann 7968 track cleaning car of the DB BR740 in yellow livery, E, Cases G-E, (2)
£60-80

183. Fleischmann Continental N Gauge Diesel Locomotives, four cased examples all of the DB 7400 VT95 Railbus 7229, 7229 BR 212-242 in red livery, 7231 BR 212-248 in turquoise livery and 7235 BR 218 in red livery, E, Cases G-E, (4)
£80-120



184. Fleischmann and Minitrix N Gauge Continental Locomotives, two cased examples Minitrix 2093 two car diesel train VT 135 of the DRG in maroon and cream livery and Fleischmann 7025 BR80 steam tank locomotive of the DB in black and red livery, E, Cases F-G, (2)
£60-80

185. Continental N Gauge Coaching Stock, cased Fleischmann examples 8630K and 8097 both DB in green livery and 8081K Mitropa in tan livery, Minitrix 3028 (3) one cased, two with some wear in green SBB livery and a Touropa example in blue livery (damaged), together with Roco cased coaches in green DB livery 2250 (2), 24205, 2252 and another similar unboxed and unmarked (damaged), P-G, (Qty)
£50-60

186. Continental N Gauge Freight Stock, various cased examples including a rake of seven Roco 25279 sliding wall wagons in silver Henkel Trocken livery, and four others by Roco, Minitrix cased 512, 3500 and Fleischmann 8311K, together with three uncased Fleischmann goods wagons and three lengths of Fleischmann Piccolo straight track, F-E, Cases P-E, (Qty)
£60-80



187. American N Gauge Diesel Locomotives and Coaches, cased Bachmann 4609GP-40 EMD and 4649 F9 EMD both in green Burlington Northern livery, Rivarossi examples cased 9154 E8 5021A locomotive in yellow Chicago & North Western livery with cased matching coach 2644, 9144 FM 6303 locomotive in Southern Pacific livery (partially cased) matching uncased coach and two Union Pacific coaches one uncased by Rivarossi the other a bi-level coach cased by Rowa, both in yellow livery, G-E, Cases P-F, (8)
£100-120

188. American N Gauge Steam Locomotive by Rivarossi, a cased 9136 2-8-8-2 2197 Mallet locomotive and tender in black Norfolk & Western livery, G-E, Case F
£50-60

189. American Steam Locomotives and Tenders by Rivarossi, a trio all Baltimore & Ohio comprising 9199 4-6-2 Heavy Pacific President Hayes (partially cased) and 2185 0-4-0 96 locomotive & tender in black livery (2) one cased, F-E, (3)
£60-80

190. American N Gauge Rake of American Railway Express Coaches by Rivarossi, a rake of six all cased comprising 9584, 9585, 9586, 9587, 9588 and 9589, all in brown and red livery American Railway Express livery The Alton Limited, G-E, Cases F-G, (6)
£60-80



Buyers Premium with SAS & SAS LIVE: 20% plus Value Added Tax making a total of 24% of the Hammer Price

the-saleroom.com Premium: 25% plus Value Added Tax making a total of 30% of the Hammer Price

www.specialauctionservices.com

191. American N Gauge Diesel Locomotive and Freight Stock, a boxed Southern Pacific 9725 locomotive of Chinese manufacture and various items of freight stock cased examples by Atlas /Rivarossi 2382, 2364, 2381, 3562 and 2466, Ahm Austria 4424, Arnold Rapido 0419 (partially boxed), Life Like 07718 and Jack Frost tank wagon, boxed Industrial Rail 7793 cattle truck and Bachmann 5584 box car, together with unboxed examples by Bachmann, Lima (2) and two others, F-E, Cases/Boxes P-E, (Qty)
£50-80

192. Hornby (China) OO Gauge East Coast Express Train Set, a boxed R1021 set appears complete with Britannia Class, John of Gaunt Steam Locomotive and tender, coaches and accessories including track mat, G-E, box with outer box G-E
£80-120



193. Hornby (China) OO Gauge Atlantic Coast Express Train Pack, a limited edition boxed set R2194 factory packaged includes Merchant Navy Class Holland America Line steam locomotive and tender, three Southern coaches and certificate 1887/2000, E, Box G-E
£60-80

194. Hornby (China) OO Gauge Atlantic Coast Express Train Pack, a limited edition boxed set R2194 factory packaged includes Merchant Navy Class Holland America Line steam locomotive and tender, three Southern coaches and certificate 472 /2000, E, Box G-E
£60-80

195. Hornby (China) OO Gauge The Pines Express Train Pack, a limited edition boxed set R2436 factory packaged includes West Country Class Coombe Martin steam locomotive and tender, three maroon coaches and certificate 1386/3000, E, Box G-E
£60-80

196. Hornby (China) OO Gauge Torbay Express Train Pack, a limited edition boxed set R2090 factory packaged includes Castle Class Llanstephan Castle steam locomotive and tender three crimson and cream coaches and certificate 1172/2000, E, Box G-E
£60-80

197. Hornby (China) OO Gauge Thames-Clyde Express Train Pack, a boxed R2392M matched set factory packaged includes Dornoch Firth steam locomotive and tender and three maroon coaches, E, Box G-E
£60-80

198. Hornby (China) OO Gauge Bournemouth Belle Train Pack, a boxed limited edition R2661M set factory packaged includes Battle of Britain Class 21C159 steam locomotive and tender, three Pullman coaches and certificate 1417/1500, E, Box with outer box G-E
£60-80

199. Hornby (China) OO Gauge Devon Belle Train Pack, a boxed limited edition R2568 set factory packaged includes West Country Class Watersmeet steam locomotive and tender, three Pullman coaches and certificate 1072/2000, E, Box G-E
£60-80



200. Hornby (China) OO Gauge Golden Arrow Train Pack and Coach Pack, a boxed R2369 set factory packaged includes Battle of Britain Class Golden Arrow steam locomotive and tender and three Pullman coaches, together with R4196 Golden Arrow Coaches includes three Pullman coaches, E, Boxes G-E, (2)
£80-120

201. Hornby (China) OO Gauge Bournemouth Belle Train Pack and Coach Pack, a boxed R2300 set factory packaged includes Merchant Navy Class New Zealand Line steam locomotive and tender and three Pullman coaches, together with R4169 Bournemouth Belle Pullman Cars includes three coaches, E, Boxes G-E, (2)
£80-120



202. Hornby (China) OO Gauge Orient Express Boxed Set, a boxed (with outer box), R1038 factory packaged set includes Merchant Navy Class United States Lines steam locomotive and tender, three Pullman Coaches, track and controller, E, Box G-E
£140-180

203. Hornby (China) OO Gauge West Country Wilton Premier Boxed Set, a boxed (with outer box), R1042 factory packaged set includes West Country Class Wilton steam locomotive and tender, three Pullman coaches, track and controller, E, Box G-E
£120-160

204. Hornby (China) OO Gauge Pullman Coaches, a boxed rake of eight comprising R4143 1st Parlour Leona, R4145 1st Class Kitchen Cynthia, R4145A 1st Kitchen Sappho, R4146 3rd Kitchen (4) and R4163 Car No 64, E, Boxes G-E, (8)
£60-80

205. Hornby (China) OO Gauge Steam Locomotives and Tenders, a boxed duo of Castle Class Locomotives, R2141 limited edition Isambard Kingdom Brunel with certificate 0991/1000 and R2318 Spitfire both in BR green livery, E, Boxes G-E, (2)
£100-120

206. Hornby (China) OO Gauge Steam Locomotives and Tenders, a boxed duo of Castle Class locomotives, R2424 Hampden Castle and R2086 Earl Cairns both in BR green livery, E, Boxes F-E, (2)
£80-120

207. Hornby (China) OO Gauge Steam Locomotives and Tenders, a boxed duo of Castle Class locomotives, R2317 Dunster Castle and R2389 Bulth Castle both in Great Western green livery, E, Boxes G-E, (2)
£100-120

208. Hornby (China) OO Gauge Steam Locomotives and Tenders, a boxed duo of Bullied West Country Class Locomotives, R2282 Weymouth and R2218 Wilton both in BR green livery, E, Boxes G-E, (2)
£100-120

209. Hornby (China) OO Gauge Steam Locomotives and Tenders, a boxed duo of Bullied West Country Class Locomotives, R2542 City of Wells In BR green (DCC ready) and R2315 Clovelly in BR malachite green livery, E, Boxes G-E, (2)
£100-120



210. Hornby (China) OO Gauge Steam Locomotives and Tenders, a boxed duo of Bullied West Country Class locomotives, R2219 Blackmoor Vale in Southern Malachite green and R2315 Clovelly in BR Malachite green, E, Boxes G-E, (2)
£100-120

211. Hornby (China) OO Gauge Steam Locomotives and Tenders, a boxed duo of West Country Class locomotives, R2385 Winston Churchill, NRM Special Edition and R2584 Rebuilt West Country Plymouth (DCC ready) weathered, both in BR green, E, Boxes G-E, (2)
£100-120

212. Hornby (China) OO Gauge Steam Locomotives and Tenders, a boxed duo of Streamline Coronation Class locomotives, R2205 City of Birmingham and R2179 Duchess of Gloucester, both in LMS maroon livery, E, Boxes G-E, (2)
£100-120



213. Hornby (China) OO Gauge Steam Locomotives and Tenders, a boxed duo of streamline Coronation Class locomotives, R2271 Princess Alice in LMS blue and R2270 City of Edinburgh in LMS black livery, E, Boxes G-E, (2)
£100-120

214. Hornby (China) OO Gauge Steam Locomotives and Tenders, a boxed duo of BR locomotives, R2203 Class A4 Kingfisher stream line and R2583 Class N15 King Arthur (DCC ready) both in BR green livery, E, Boxes G-E, (2)
£100-120

215. Hornby (China) OO Gauge Steam Locomotives and Tenders, a boxed duo of County Class locomotives, R2391 County of Carnarvon and R2085 County of Worcester, both in GW green livery, E, Boxes F-E, (2)
£80-120



216. Hornby (China) OO Gauge Steam Locomotives and Tenders, a boxed duo of County Class locomotives, R2392 County of Salop in BR green livery and R2174 limited edition with certificate 0159/1500 County of Northampton, in BR black livery, E, Boxes F-E, (2)
£80-120

217. Hornby (China) OO Gauge Steam Locomotives and Tenders, a boxed duo of County Class locomotives, R2097 County of Gloucester and R2174 County of Northampton, both in BR black livery, E Boxes F-E, (2)
£80-120



218. Hornby (China) OO Gauge Steam Locomotives and Tenders, a boxed duo of A3 Class locomotives, R2261 Flying Scotsman in green LNER livery and R2201 Robert The Devil in BR blue livery, E, Boxes G-E, (2)
£100-150

219. Hornby (China) OO Gauge Steam Locomotives and Tenders, a boxed duo of A3 Class locomotives, R2441 Flying Scotsman in green LNER livery NRM Special Edition and R2126 Diamond Jubilee in BR green livery limited edition with certificate 241/500, E, Boxes G-E, (2)
£100-150

220. Hornby (China) OO Gauge Steam Locomotives and Tenders, a boxed duo of Merchant Navy Class locomotives, R2204 Bibby Line and R2267 Brocklebank Line, both in BR green livery, E, Boxes G-E, (2)
£100-120



221. Hornby (China) OO Gauge Steam Locomotives and Tenders, a boxed duo of Merchant Navy Class locomotives, R2169 Clan Line and 22294 Ellerman Lines NRM Special Edition, both in BR green livery, E, Boxes G-E, (2)
£100-120

222. Hornby (China) OO Gauge Steam Locomotives and Tenders, a boxed duo of Merchant Navy Class locomotives, R2170 Holland Afrika Line in BR green livery and R2171 Canadian Pacific in BR blue livery, E, Boxes G-E, (2)
£100-120

223. Hornby (China) OO Gauge Steam Locomotives and Tenders, a boxed duo of BR locomotives, Merchant Navy Class Clan Line R2169 (Britannia Hobbies), and R2272 Class 7MT Western Star both in BR green livery, G-E, Boxes F-E, (2)
£80-100

224. Hornby (China) OO Gauge Steam Locomotives and Tenders, a boxed duo of Battle of Britain Class Locomotives, R2283 Fighter Pilot in Southern Malachite green and R2286 Fighter Command in Southern silver and white livery, limited edition with certificate 0574/1000, E, Boxes G-E, (2)
£100-150



225. Hornby (China) OO Gauge Steam Locomotives and Tenders, a boxed duo of Battle of Britain Class Locomotives, R2220 92 Squadron in Southern Malachite green and R2586 Sir Keith Park in BR green livery (DCC ready), E, Boxes G-E, (2)
£100-120

226. Hornby (China) OO Gauge Steam Locomotives and Tenders, a boxed duo of Battle of Britain Class locomotives, R2316 73 Squadron and R2606 Sir Trafford Leigh Mallory, (DCC ready) both in BR green livery, E, Boxes G-E, (2)
£100-120

227. Hornby (China) OO Gauge Steam Locomotives and Tenders, a boxed duo of Battle of Britain Class locomotives, R2388 605 Squadron and R2221 Tangmere, both in BR green livery, E, Boxes G-E, (2)
£100-120

228. Hornby (China) OO Gauge Steam Locomotives and Tenders, a boxed duo of Britannia class locomotives, R2387 Flying Dutchman and TMC12 (Trafford Model Centre) The Territorial Army, both in BR green livery E, Boxes G-E, (2)
£100-120

229. Hornby (China) OO Gauge Steam Locomotives and Tenders, a boxed duo of Britannia Class 7mt locomotives, R2207 Britannia and R2175 Firth of Tay, both in BR green livery, E, Boxes G-E, (2)
£100-120



230. Hornby (China) OO Gauge Steam Locomotives and Tenders, a boxed duo of Britannia Class 7mt locomotives, R2192 Anzac Special Edition 0679/1000 and R2180 Clive of India, both in BR green livery, E, Boxes G-E, (2)
£100-120

231. Hornby (China) OO Gauge Steam Locomotives and Tenders, a boxed duo of BR locomotives, King Class R2309 King George VI and Princess Coronation Class R2386 Duchess of Gloucester, both in BR blue livery, E, Boxes G-E, (2)
£100-120

232. Hornby (China) OO Gauge Steam Locomotives and Tenders, a boxed duo of Princess Class locomotives R2226 Margaret Rose in BR green livery and R2225 Arthur of Connaught in LMS maroon livery, E, Boxes G-E (2)
£100-120



233. Hornby (China) OO Gauge Steam Locomotives and Tenders, a boxed duo of Duchess Class locomotives R2311 City of Glasgow in LMS black livery and R2230 Duchess of Buccleuch in LMS maroon livery, E, Boxes G-E, (2)
£100-120

234. Hornby (China) OO Gauge Steam Locomotives and Tenders, a boxed duo of BR locomotives, Duchess Class R2231 Duchess of Rutland in green livery and Grange Class R2403 Derwent Grange in weathered black livery (possibly with additional weathering), G-E, Boxes G-E, (2)
£80-120



235. Hornby (China) OO Gauge Steam Locomotives and Tenders, a boxed trio of QI Class locomotives, R2344 BR 33009 in weathered livery, R2355 BR Early Crest 33037 and SR C8 all in black livery, E, Boxes G-E, (3)
£100-150

236. Hornby (China) OO Gauge Steam Locomotives and Tenders, a boxed trio of 8F Class locomotives R2249 LMS 8042 in weathered livery, R2228 LMS 8510 and R2395 BR 48119 in weathered livery, all in black livery, E, Boxes G-E, (3)
£100-150



237. Hornby (China) OO Gauge Steam Locomotives and Tenders, a boxed trio of 5MT Class Locomotives, R2359 BR 44908, R2359 BR 44908 (minor damage apparent) and R2360 BR 44762 in weathered livery, all in BR black livery, G-E, Boxes G-E, (3)
£100-120

238. Hornby (China) OO Gauge Steam Locomotives and Tenders, a boxed trio comprising R2227 Class O6 LNER 7675, R2257 Class SP5F LMS 5055 and R2323 NRM Special Edition Class 5MT LMS 5000, all in black livery, E, Boxes G-E, (3)
£100-150

239. Hornby (China) OO Gauge Steam Locomotives and Tenders, a boxed trio of BR locomotives, R2465 Class 2800, 2836 weathered edition Class 9F R2248 92239 weathered edition and R2712X Class T9 30724 (decoder fitted), all in BR black livery, E, Boxes G-E, (3)
£100-150

240. Hornby (China) OO Gauge Steam Locomotives and Tenders, a boxed duo comprising R2248 Class 9F BR 92239 in black weathered livery and R2690 Class T9 LSWR 120 in Southern green livery NRM Special Edition (DCC Ready), E, Boxes G-E, (2)
£80-100

241. Hornby (China) OO Gauge Steam Locomotives and Tenders, a boxed duo of N15 Class locomotives R2582 Sir Harry Le Fise Lake (DCC ready) and R2405 Class A1 LNER Great Northern, both in green livery, E, Boxes G-E, (2)
£100-120



242. Hornby (China) OO Gauge Steam Locomotives and Tenders, a boxed duo of N15 King Arthur Class locomotives R2581 Sir Gawain (DCC Ready) weathered edition and R2638 Sir Lamiel NRM Special Edition (DCC Ready), both in BR green livery, E, Boxes G-E, (2)
£100-120

243. Hornby (China) OO Gauge Steam Locomotives, three boxed examples R2679 GWR Class AIX Terrier Portishead in green livery, R2678 LSWR Class M7 252 in green livery Hornby Collector Centre Special Edition 295/1200 (DCC Ready) and R2504 Class M7 BR 30051 in black livery (DCC Ready), E, Boxes G-E, (3)
£80-100

244. Hornby (China) OO Gauge Diesel Electric Locomotives, a boxed duo of Class 50 CO-CO BR locomotives R2349 Ark Royal and R2374 Hood, both DCC ready, E, Boxes G-E, (2)
£100-120

245. Hornby (China) OO Gauge Diesel Electric Locomotives, a boxed duo of Network Southeast Class 50 CO-CO BR locomotives, R2429 Superb (DCC ready) and R2350 Achilles in weathered livery, E, Boxes G-E, (2)
£100-120

246. Hornby (China) OO Gauge Diesel Electric Locomotives, a boxed duo of Class 50 CO-CO BR Locomotives R2348 Resolution and R2428 Illustrious (DCC Ready), E, Boxes G-E, (2)
£100-120



247. Hornby (China) OO Gauge Diesel Electric Locomotives, a boxed duo of BR locomotives, R2408 Class 50 CO-CO Sir Edward Elgar in BR green livery (DCC Ready) and R2413 A-I-A Class 31 31270 weathered edition in BR blue livery, E, Boxes G-E, (2)
£80-120

248. Hornby (China) OO Gauge DMU and Coaches, a boxed collection comprising R2509 Class 121 Driving Motor Brake Car W55027 in BR green, together with BR maroon and cream Sleeper coaches R4182 (2) an unboxed matching passenger coach and four boxed BR maroon coaches R402 weathered, R4131B, R4100D (Autocoach) and R4134B, E, Boxes G-E, (8)
£80-100

249. Hornby (China) OO Diesel Electric Shunting Locomotive and Goods Wagons, a boxed group comprising R2417 BR Class O8 3256 Shunter, ten R6157A BR MGR Open Hood Hopper Wagons (10), R6213 MGR Coal Hopper Wagons (2) and R6288A Departmental YGB Seacow wagons (2), E, Boxes G-E, (15)
£80-100



250. Hornby (China) OO Gauge Steam Locomotives, a boxed group of BR locomotives all with additional non factory weathering and some damage, tank locomotives R2357 Class 61XX 6167 and R2506 Class M7 30108 (DCC Ready) and locomotives with tenders R2355A QI Class 33017 (all in black livery and R2581 Class N15 Sir Gawain in green livery, F-G, Boxes F-G, (4)
£80-100

251. Hornby (China) OO Gauge Steam Locomotives and Tenders, three boxed examples with additional non factory weathering and some damage, R2221 Battle of Britain Class Manston line BR green livery, R2465 Class 2800 renumbered as 2808 and R2713 Class T9 renumbered as 30318, both in BR black livery, F-G, Boxes F-G, (3)
£80-100

252. Hornby (Margate) OO Gauge Steam Locomotives and Tenders, our boxed limited edition examples, Britannia Class, Top Link R2010 Lord Roberts in BR green livery 0451/1000 and R378 Lord Tennyson in BR green livery with certificate 0614/2000, together with A3 class R059 Pretty Polly in BR green livery with certificate 731/1000 and R129 Pretty Polly in BR blue livery (minus certificate), E, Boxes F, (4)
£80-120

253. Hornby (Margate) OO Gauge Steam Locomotives and Tenders, five boxed examples a limited edition R375 A3 Class Pretty Polly in BR green with certificate 0531/1000, R350 A4 Stream line Mallard in BR green, R759 Albert Hall in GWR green livery, R357 Patriot Class Duke of Sutherland in LMS red livery and R840 Black Five 5112 in LMS black livery, E, Boxes P-F, (5)
£100-120



254. Hornby (Margate) OO Gauge Steam Locomotives and Tenders, six boxed examples, R817 Schools Class Eton in SR green livery, R324 Lady Godiva in BR black livery, R378 Class D49/1 Cheshire and R053 B17 Class Manchester United both in LNER green livery, R380 Clevedon Castle in BR black livery and R392 County Class County of Bedford in GWR green livery, E, Boxes P-F, (6)
£100-140

255. Hornby (Margate) OO Gauge LMS Coaches, maroon liveried coaches comprising R433, R434, R4095 and six unboxed examples, together with boxed rake of Coronation Scot blue and silver coaches a R422 1st Class (6) and R423 Brake 3rd, G-E, Boxes F-G, (16)
£60-80



256. Hornby (Margate) and Graham Farish OO Gauge GWR and LNER Coaches, Hornby LNER teal coaches R435 (2), R436 (2) and GWR Clerestory coaches Hornby R488 Brake 3rd, R435 3rd, R436 Brake 3rd (2), R123 Brake Coach (2), together with Graham Farish First Class chocolate and cream 1st class coaches two in bubble packs one unboxed, F-E, Boxes F-G, (13)
£50-60

257. Hornby (Margate) BR Coaches and Class 43 Powered Cars, all unboxed an Inter City 125 Class 43 43010 powered car (blue/grey) and Class 43 43046 powered car (in Intercity Livery) eight blue/grey Intercity coaches, three blue/grey buffet cars and two coaches in Intercity Livery, F-G, (15)
£50-60

258. Hornby (Margate) and Other Goods Wagons, a boxed collection including Hornby R225 Steel Carriers (6), R211 Lime Wagon (3), R401 Open Wagon (3), R215 Harvey Bros Cattle Van (2), R738 Ferry Van (2), R296 Track Cleaning Coach, R098 Breakdown Crane Crew Coach and seven others, Graham Farish (seven), five in plastic cases, two in earlier bubble packs and two Wrenn examples W4324 Utility Van blue, W5049 Fruit Van GW, G-E, Packaging P-G, (34)
£80-100

259. Bachmann OO Gauge Steam Locomotives and Tenders, two N Class Locomotives a limited edition example in wooden display case Brian Fisk with certificate 425/500 with packaged decals and boxed 32-161 BR 31862 early emblem and slope sided tender, both in BR black, E, Box/Case G-E, (2)
£60-80

260. Bachmann OO Gauge Steam Locomotives and Tenders, two N Class Locomotives a limited edition example in wooden display case Brian Fisk with certificate 430/500 with packaged decals in BR black livery and boxed 32-163 Southern 1404 with smoke deflectors and slope sided tender, in green livery, E, Box/Case G-E, (2)
£60-80



261. Bachmann OO Gauge Steam Locomotives and Tenders, two N Class Locomotives a limited edition example in wooden display case Brian Fisk with certificate 322/500 with packaged decals and boxed 32-156 BR 31844 early emblem weathered, both in BR black, E, Box/Case G-E, (2)
£60-80

262. Bachmann OO Gauge Steam Locomotives and Tenders, three N Class locomotives, 32-160 Southern 1406 with slope sided tender in green livery, 32-161 BR 31862 and 32-162 BR 31401 both in BR black with slope sided tenders, E, Boxes G-E, (3)
£100-120

263. Bachmann OO Gauge Steam Locomotives, three boxed examples, N Class 32-163 Southern 1404 with smoke deflectors and slope tender in green livery, 32-305 Collett Goods BR 2217 with manor tender weathered and 32-502 Standard Class 5MT tank locomotive Camelot, both in BR black livery, E, Boxes G-E, (3)
£80-120

264. Bachmann OO Gauge Steam Locomotives, four boxed Standard Class 4MT tank locomotives all in BR black comprising 32-354A 80120 late crest, 32-350 80061 early emblem, 32-354 80002 late crest and 32-355 early crest, E, Boxes G-E, (4)
£100-120

265. Bachmann OO Gauge Steam Locomotives and Tenders, three boxed BR A1 Class locomotives, 32-552 60147 North Eastern in green livery, 32-551 60158 Aberdonian in green livery and 32-553 60161 North British in BR blue livery, E, Boxes G-E, (3)
£100-150

266. Bachmann OO Gauge Steam Locomotives and Tenders, three boxed A Class locomotives, 31-950X A4 Class stream line 2509 Silver Link in LNER silver/grey and A1 Class 32-554 60114 W.P. Allen in BR Doncaster green and 32-555 60130 Kestrel in BR green, E, Boxes G-E, (3)
£100-150

267. Bachmann OO Gauge Steam Locomotives and Tenders, three boxed examples, A4 Class stream line locomotives 31-950X 2509 Silver Link in LNER silver/grey, 31-960A 60015 Quick Silver in BR weathered green and V2 Class 31-553 60807 in BR black livery, E, Boxes F-E, (3)
£100-150

268. Bachmann OO Gauge Steam Locomotives and Tenders, three boxed examples, Manor Class 31-307 BR 7813 Freshford Manor in black livery and 31-308 BR 7825 Lechlade Manor in BR green (with additional non factory weathering) together with Jubilee Class BR 45697 Achilles with 4000G tender in weathered green livery, G-E, Boxes G-E, (3)
£100-150



269. Bachmann OO Gauge Steam Locomotives and Tenders, three boxed examples, Thompson B1 Class 31-708 BR 61003 Gazelle and 31-700Z BR 61247 Lord Burghley weathered, together with Hall Class 32-002 BR 5960 Saint Edmund Hall all in black livery, E, Boxes G-E, (3)
£100-150

270. Bachmann OO Gauge Steam Locomotives and Tenders, three boxed examples, Thompson B1 Class 31-700Z BR 61247 Lord Burghley weathered black livery, together with Austerity 32-257 WD BR 90015 and 32-255 WD 78697 Army Transport Group in green livery, E, Boxes G-E, (3)
£100-150



271. Bachmann OO Gauge Steam Locomotives and Tenders, three boxed Austerity examples, 32-257A BR WD 90732 Vulcan in black livery, 32-255A WD 7199 WW2 Khaki Desert Sand livery and 32-250 WD 4310 in green livery, E, Boxes G-E, (3)
£100-150

272. Bachmann OO Gauge Steam Locomotives and Tenders, two boxed examples Class G2A 31-475A with non factory weathering renumbered as 49430 in BR black with tender back cab and 31-282 P/ Boiler Scot 46151 The Royal Horse Guardsman in weathered BR green livery, G-E, Boxes G-E, (2)
£80-120



273. Bachmann OO Gauge Steam Locomotives, a boxed group of five BR tank locomotives 31-902A 57XX 5775 (in non factory weathered black livery), 45XX Class 4566 32-125 (2) in lined green livery and 32-126 4560 in black livery (2), G-E, Boxes F-E, (5)
£50-80

274. Bachmann OO Gauge Steam Locomotives, six boxed BR tank locomotives all in black livery, Pannier Tanks 32-201 8763, 32-203 4666 weathered (2), Ivatt Class 31-454 41286 weathered, J72 31-055A 68737 weathered and Class 56XX 32-079 6624, E, G-E, (6)
£60-80

275. Bachmann OO Gauge Diesel Locomotives, two boxed Class 55 BR locomotives TMC Custom Finish limited edition TMC024D D9007 Deltic Pinza with certificate 5/250 in green livery and 32-525 D9004 Queens Own Highlander also in green livery, E, Boxes G-E, (2)
£100-120

276. Bachmann OO Gauge Diesel Locomotives, three boxed BR examples Class 24 5087 in blue livery, Class 42 Warship 32-058 Grenville in weathered green livery and Class 44 32-650 Scafell Pike in green livery, E, Boxes G-E, (3)
£100-150

277. Bachmann OO Gauge Diesel Locomotives, three boxed BR examples Class 46 32-700 D163 Leicestershire & Derbyshire Yeomanry, in green livery together with Class 45 locomotives 32-675 D67 The Royal Artilleryman in green livery and 32-675Z Royal Signals in weathered BR green livery, E, Boxes G-E, (3)
£100-150



278. Bachmann OO Gauge Diesel Locomotives, three boxed BR 37/4 Class locomotives 32-376 37429 Eisteddfod Genedlaethol in Regional Railways livery, 32-377 37408 Loch Rannoch in blue livery and 32-378 37431 Bullidae in Intercity livery, E, Boxes G-E, (3)
£100-150

279. Bachmann OO Gauge Diesel Locomotives, two boxed BR 37/4 Class locomotives, 32-379 37678 Redstripe/Railfreight grey livery and 32-380 37671 Tre Pol and Pen in Railfreight livery, E, Boxes G-E, (2)
£80-120

280. Bachmann OO Gauge Diesel Locomotive and Bogie Wagons, a boxed group includes 32-027 Class 20 D8000 in BR green livery and Intermodal Bogie Wagons 37-311 two 20ft wagons with two P&O containers and 37-301B two 45ft wagons with two Seawheel containers, E, Boxes G-E, (3)
£50-80

281. Bachmann OO Gauge Diesel Locomotive and Bolster Wagons, a boxed group includes 32-028 Class 20 D8134 in BR green livery and five 33-856A 30 Ton Bogie Bolster Wagons all in BR grey, E, Boxes G-E, (6)
£50-80



282. Bachmann OO Gauge Diesel Locomotive and EWS Goods Wagons, a boxed group comprises 32-028 Class 20 D1834 in BR green livery, 37-626 102 Tonne Thrall Bra Steel Strip Carrier (1) and 37-850 104 Tonne HTA Thrall Coal Hopper Wagons (9), E, Boxes G-E, (11)
£80-120

283. Bachmann OO Gauge Diesel Locomotive and EWS Goods Wagons, a boxed group comprises 32-027 Class 20 D8000 in BR green livery, 37-626 102 Tonne Thrall Bra Steel Strip Carrier (1) and 37-850 104 Tonne HTA Thrall Coal Hopper Wagons (9), E, Boxes G-E, (11)
£80-120

284. Bachmann OO Gauge Diesel Shunters and Plasser Maintenance Machinery, a boxed group including four Shunting engines, 32-105 Class 08 Intercity Livery, 32-110 Class 08 BR Black Early Emblem, 32-110B Class 08 in BR green livery and 31-337B weathered in BR green with wasp stripes, together with powered Plasser engineering machinery, 36-150 Plasser OWB 10 with Crane and 36-165 Plasser Tamper Machine (2), E, Boxes G-E, (7)
£60-80

285. Bachmann OO Gauge Goods Wagons, a boxed group comprising Bolster Wagons 33-925 Gulf Red (2), 33-925 BR grey (2), 33-926, 33-875 and 33-850, 37-552 ARC mineral wagon, 33-825C Queen Mary Brake Van, 33-302, 37-536, 37-401A and 34-652 Thompson BG Full Brake BR blue, G-E, Boxes F-G, (13)
£50-80



286. Bachmann OO Gauge Intercity Coaches, a boxed rake of twelve includes 39-080 MK I Corridor BSK (3), 39-030 MK I Corridor SK (3), 39-230 MK I Corridor Composite (3) and 39-104 MK I Restaurant/Buffer RBR (3), E, Boxes G-E, (12)
£80-120

287. Bachmann OO Gauge Virgin Trains Super Voyager Set, a boxed factory sealed set 32-625 Class 221 Virgin Super Voyager (Tilting) five car unit, E, Box E
£60-80

288. Bachmann OO Gauge Virgin Voyager Set, a boxed 32-600 Class 220 Virgin Voyager (Non Tilt) 4 Car DEMU Maiden Voyager, factory packaged, E, Box G-E
£50-80

289. Dapol OO Gauge Virgin Trains Pendolino Set, a boxed D390-7 limited edition Pendolino four car EMU with tilting action Virgin Lady, G-E, Box G
£50-80

290. Heljan OO Gauge Diesel Electric Locomotive, a boxed 4798 limited edition Class 47/7 47787 Windsor Castle locomotive in EWS livery with certificate 54/1000, E, Box G
£80-120

291. Heljan OO Gauge Diesel Electric Locomotive, a boxed 4701 Class 47 D1662 Isambard Kingdom Brunel, locomotive in BR green livery, E, Box G
£80-120

292. Heljan OO Gauge Diesel Electric Locomotive, a boxed 3500 Class 35 D7017 locomotive in BR green livery, E, Box G
£60-80

293. Mainline OO Gauge Diesel Locomotives, five boxed examples 37064 Type 4 B-B diesel-hydraulic Highflyer, 37087 Warship Class Intrepid, Class 45 Co-Co diesels 37068 The Lancashire Fusilier, 37050 The Manchester Regiment all in BR green livery and 37073 Type 4 B-B Diesel Hydraulic Hermes in BR maroon livery, E, Boxes F-E, (5)
£100-120



294. Mainline OO Gauge Diesel Locomotives, five boxed examples all in BR blue livery, 37063 Class 42 B-B Warship class Kelly, 37040 Class 45 The Royal Marines, 37068 Royal Inniskilling Fusilier and 37051 Class 45 The Manchester Regiment (2), E, boxes F-G, (5)
£100-120

295. Diesel OO Gauge Locomotives, Six boxed examples, including Airfix 31/4 class in BR blue livery 54100-6 (2) and 31/1 Class in BR green livery 54101-9 (2), Replica Railways 11501 Class 45 45128 in BR blue livery and Dapol Class 56 56075 West Yorkshire Enterprise in grey Railfreight livery, E, Boxes F, (6) £60-80



296. Mainline OO Gauge Steam Locomotives and Tenders, a boxed group of five, 54157 2301 Dean Goods in BR black, Manor Class 37078 Hinton Manor in GWR green, 37043 Lydham Manor in BR green together with Moghul Class 43XX 37090 5322 in GWR green and 37045 4358 in BR green, E, Boxes F-G, (5) £80-120

297. Mainline OO Gauge Steam Locomotives and Tenders, a boxed group of five, 37061 Jubilee Class Leander in LMS crimson, Rebuilt Patriot Class 37065 Sir Frank Ree in LMS black, 37075 Sir Robert Turnbull in BR apple green and Rebuilt Scot Class 37056 Scots Guardsman (damage to tender guard) in LMS black and 37093 Parallel Boiler Scot Prince of Wales Volunteer in BR green, G-E, Boxes F-G, (5) £80-120

298. Mainline OO Gauge Steam Locomotives, a boxed group of five, Collett Class locomotives and tenders 37059 2213 in BR black livery (2), 37-058 3205 in GWR green and 37077 3210 in BR green, together with N Class tank locomotive 9522 in LNER green, E, Boxes F-G, (5) £60-80

299. OO/HO Gauge Steam Locomotives and Tenders, a boxed group of five, Dapol D15 Class 2P 635 in LMS black livery, Rivarossi HO Gauge 1348 Royal Scot 6100 in LMS maroon livery and GMR Great Model Railways, Castle Class 54124-2 Caerphilly Castle in GWR green livery (2), 54125-5 Pendennis Castle in BR green livery, G-E, Boxes F-G, (5) £60-80

300. Mainline Steam Tank Locomotives, a boxed group of eight, 57XX Pannier Class 37085 5768 in BR black (3), 37084 5764 in GWR green and J72 Class 37-54 581 in LNER green and Joem in North Eastern green, 37055 68745 in BR black and 69001 also in BR black, E, Boxes F-G, (6) £50-80

301. Steam Tank Locomotives, a boxed group of seven, Airfix 54152-7 1400 Class 1466 in GWR green, Dapol D7- Terrier 2635 in Southern Green, GMR Airfix BR 6167 Prairie tank (minor damage apparent) in black livery and Hornby (Margate) R052 Jinty 16440 LMS crimson, R077 GWR 0-4-0 101 in GWR green, R158 GWR pannier 2747 in green livery and R055 Class 4P 2300 in LMS crimson, G-E, Boxes P-F, (7) £60-80



302. Airfix Steam Locomotives, a boxed group of eight, locomotives with tenders 54122-6 4F Fowler 4454 in LMS black (2), 54123-9 4F Fowler 44454 in BR black, Royal Scots Fusilier 54120-0 (2) in LMS black livery (2), 54121-3 Royal Scot in BR black and 54125-5 Pendennis Castle in BR green, together with a Prairie Tank 54150-1 6110 in GWR green, G-E, Boxes F-G, (8) £80-100

303. Airfix Inter City Coaches, a boxed rake of BR blue/grey coaches 54201-8 MK II 1st Class (5) and 54200-5 MK II 2nd Class (4), E, Boxes G-E, (9) £50-80

304. Mainline BR Cream and Crimson Coaches, a boxed rake of nine, 37-102 Brake 2nd (2), 37101 MK I Corridor (2), 37-112 Brake Corridor (1) and 37-111 Corridor (4), E, Boxes G-E, (9) £50-80

305. GMR and Airfix GWR Chocolate and Cream Coaches, a mainly boxed collection, Great Model Railways rake of eight Cornish Riviera Ltd 54207-6 (4) and 54209-2 (4) all boxed, together with boxed Airfix 54250-0 Class B Suburban (4), 54255-5 Auto Coach (2) and two others unboxed, G-E, Boxes F-G, (16) £80-100

306. Airfix and Mainline LMS Crimson Coaches, a mainly boxed collection, Airfix boxed 54202-1 Composite Corridor (4), 54251-3 Composite Non Corridor (2, 54204-7 Brake 3rd (3), 54207-7 Brake 3rd (1) 54256-8 Auto Coach (2) one unboxed and another unboxed, together with Mainline, 37-109 Corridor Coach (4) and 37-110 Corridor (2) all boxed, G-E, Boxes G-E, (13) £60-80

307. Mainline and Other BR Coaches, boxed Mainline BR chocolate and cream coaches 37105 2nd Class(3) and 37-106 2nd Class (3), together with BR crimson coaches, GMR 54253-9 Brake 3rd (2) boxed and unboxed BR crimson coaches by Mainline (6) and another unmarked, G-E, Boxes F-G, (15) £50-80

308. OO Gauge Goods Wagons, a boxed collection of goods wagons including mineral, tank, plank, brake vans, guards vans and similar many private owner, Dapol (12) including B559 (2) and Wolf Wagon code 3 World War 2 examples (5), GMR/Airfix (4) including 54307-5 GW Siphon G and Airfix (13), E, Boxes F-E, (29) £80-100



309. Mainline OO Gauge Goods Wagons, a boxed group of 27 private owner goods wagons includes tank, plank, mineral and others and a trade box of six 37-169 Cambrian 7 plank wagons, E, Boxes G-E, (27) £80-100



310. Mainline OO Gauge Goods Wagons, a boxed group of 27 private owner and rail company goods wagons includes tank, plank, mineral and others (one minus box insert) and a trade box of six 37-170 BR Bauxite 5 plank wagons, E, Boxes G-E, (27) £80-100

311. Lima OO Gauge British Outline Steam Locomotives, three boxed examples, locomotives with tenders 205119 LMS 13000 Crab in maroon livery, 5103W GWR 6000 King George IV in green livery and tank locomotive 4575 Class 205111 GWR 4589 in green livery, G-E, Boxes F-G, (3) £50-80

312. Lima OO Gauge British Outline Steam Locomotives, three boxed examples, locomotives with tenders 5103W GWR 6000 King George IV in green livery, 205120 BR 42700 Crab in black livery and yank locomotive 205118 BR 94XX Pannier in BR black livery, G-E, Boxes F-G, (3) £50-80



313. Lima OO Gauge British Outline Diesel Locomotives, a boxed group of five, Class 52 examples 305315 Western Campaigner (one name plate detached) BR maroon, 205134 Western Pioneer in BR green and 205123 Western Enterprise in BR tan livery, Class 43 Warship 205128 Rapid in BR maroon and an LMS Shunter 205109 7120 in black livery, G-E, Boxes F-G, (5) £80-120

314. Lima OO Gauge British Outline Diesel Locomotives, a boxed group of four all in EWS livery, L205197 Class 66 limited Edition for Riko with certificate 0202/1200, 204757 Class 73 131, L205261 Class 67 001 and Shunter L2055259 08720, G-E, Boxes F-G, (4) £80-120

315. Lima OO Gauge British Outline Diesel Locomotives, a boxed group of three all Rail Express Special editions with certificates, L204649 Class 57 in Freightliner livery Freightliner Pioneer, L205029 Class 59 in Mendip Rail livery Alan J Day 246/750 and Class 20 Shunter in Direct Rail Services livery 20901 246/750, G-E, Boxed F-G, (3) £80-120

316. Lima OO Gauge British Outline Diesel Locomotives, a boxed trio of Class 37 locomotives, L204932 in Transrail Livery Star of the East, L204892A7 in Mainline livery British Petroleum and 2055286 37113 in BR blue, G-E, Boxes F-G, (3) £80-100



317. Lima OO Gauge British Outline Diesel Locomotives, a boxed trio Class 47 D1111 in Br green and Class 50 205007A5 50031 in BR blue and 205281A4 in Railfreight livery Defiance, G-E, Boxes F-G, (3) £80-120

318. Lima OO Gauge British Outline Diesel Locomotives, four boxed examples Class 73 locomotives 205169A2 73136 in BR grey, 205277A1 City of Portsmouth in Intercity livery and 205170 73108 in BR blue livery, together with Class 33 Marlin in grey livery, G-E, Boxes F-G, (4) £80-120

319. Lima OO Gauge British Outline Diesel Locomotives, three boxed Class 47 locomotives L204903 The Sapper in Railfreight livery, L205171 Thor in Great Western Livery and limited edition for Beatties 204823A5 The Royal Army Ordnance Corps in Technical Services livery with certificate 527/850, G-E, Boxes F-G, (3) £80-120



320. Lima OO Gauge British Outline Diesel Locomotives, four boxed Class 47 locomotives all in Intercity livery, L204947 Royal Engineers Postal & Courier Service, 205085A6 County of Kent, 205212 47833 and 205041 Windsor Castle, G-E, Boxes F-G, (4) £100-150

321. Lima OO Gauge British Outline Diesel Locomotives, four boxed examples Class 60 204876A7 Brecon Beacons in Mainline livery, Class 59 L204646 Kenneth J Painter in Yeoman livery, L204687 Class 31 468 in Fragonset Railways black livery and Class 08 Shunter L205200 IN Silver Link County livery, G-E, Boxes F-G, (4) £80-120

322. Lima OO Gauge British Outline High Speed Midland Mainline Train Pack and Coaches, a boxed L149806 four car pack Midland Pride in green Midland Mainline livery and two additional boxed coaches L305419 1st class, L305418 2nd Class, G-E, Boxes F-G, (3) £60-80

323. Lima OO Gauge British Outline Virgin High Speed Train Pack and Coaches, a boxed L149916 four car pack Storm Force in red and grey Virgin livery, together with four boxed additional coaches, L305430 2nd Class, L305428 1st Class L305429 2nd Class and L305433 Buffet, G-E, Boxes F-G, (5) £80-100

324. Lima OO Gauge British Rail Locomotives and Coaches, two boxed locomotives Class 73 205274 and 205223 both in BR blue livery, together with BR blue liveried coaches one boxed 205149, and seven others unboxed, G-E, Boxes F-G, (10)
£60-80



325. Lima OO Gauge British Rail DMUs and Coaches, two boxed DMUs 205168/205138W and 149852 with powered unit in unnumbered box, both in BR blue together with boxed coaches 205138W, 205145W and an unboxed example, boxed 305353 Siphon G and boxed guards vans 305357W (2), 3055360W, G-E, Boxes F-G, (11)
£60-80

326. Lima OO Gauge British Network Powered Units and Coaches, various examples 204733A8 Class 43 Intercity locomotive, boxed lima Intercity coach 305373A1 two unboxed and boxed Dapol example, boxed 205154W Class 117 DMU dummy unit in white and blue livery, boxed L205036 Class 156 two car DMU in Northern Spirit livery, boxed 305640A4 Rail Express Systems parcel van, two others unboxed and two unboxed lima coaches one Network SouthEast the other HO scale Intercity blue/grey, F-E, Boxes F-G, (13)
£60-80

327. Lima OO Gauge GWR Rail Car and Coaches, a boxed 205132 GWR Railcar No 22 in chocolate and cream livery, three boxed coaches 305322, 305313, 305333W and one unboxed all matching, together with a rake of eight boxed GWR coaches also in chocolate and cream 305322W (2), 30 5333W (2), 5313W (2), and 305345W (2), G-E, Boxes F-G, (13)
£60-80

328. Lima OO Gauge British Rail and Earlier DMU Coaches and Vans, a boxed BR Southern DMU 205139W/205137 a boxed coach 205146W and two unboxed examples all in green livery, three boxed GWR wagons 305351 (2) Siphon G and 305352 Palethorpes Siphon G, boxed 309200 Golden Arrow coach, 305358W LMS maroon guards vans (2), 305356W maroon guards van, 305359W maroon and cream guards van and two unboxed BR maroon coaches, G-E, Boxes G-E, (15)
£60-80

329. Lima OO Gauge British Outline Goods Wagons, a boxed collection includes L305642 EWS Seacow bogie ballast wagon (5), 302892W NCB Coal hoppers, (4), 305665A mineral wagons (3), large tank wagons (2), Bogie Fertiliser vans (2) Railfreight and BP and a container truck with Scotch Beef for Sainsburys containers, G-E, Boxes F-G, (17)
£50-80



330. Lima OO Gauge British Outline Goods Wagons, a boxed collection mainly private owner and BR but includes some pre BR examples, hoppers, trucks, tank wagons, vans and others includes 303165 BR Vans (5) tank wagons (8), hoppers (3) open plank wagons (7), vans (4) and an NE brake van, G-E, Boxes G-E, (29)
£60-80

331. OO Gauge Mainly Unboxed BR Steam Locomotives, all in BR black livery by various manufacturers, Hornby 92028 in weathered livery, Dean Goods 2579, both with tenders Hornby tank locomotives a boxed R052 47606 0-6-0, and unboxed 56010, Mainline locomotives and tenders 40569 and 75006 (2), Dapol 32640, Bachmann 68745 and 11226, a Triang example with worn detailing and 4500 Class example unmarked in weathered livery, some with damage, F-G, Box F, (12)
£80-120



332. OO Gauge Unboxed BR Steam Locomotives and Tenders, all in BR green livery by various manufacturers, Hornby Venus 70023, Oliver Cromwell 70013, Britannia 7000, County of Cornwall 1006, Port Line 35027 and Mallard 60022, Bachmann Commonwealth of Australia 60012 and Mainline Royal Scot 46100 and 75001, some with damage, F-G, (9)
£100-150

333. OO Gauge Unboxed Pre British Rail Steam Locomotives and Tenders, various railway companies, Hornby LBSC 100 tank locomotive in brown livery, LNER tank locomotives 4749 in black and 8400 in green, LMS locomotives and tenders Duchess of Abercon 6234 and Duke of Sutherland 5541, Bachmann Great Western locomotive and tender 3202 in green together with Mainline Great Western Dean Goods 2516 in green and LMS Royal Scot in maroon livery, some with damage, F-G, (8)
£50-80



334. OO Gauge Unboxed GWR Tank Locomotives, various makers Hornby 2747 in black livery (2), 101, 2783 and 2788 (2) all in green livery, Lima 9400, Dapol No 6, Bachmann 7702 and Mainline 1466, 1463 all in green livery, some with damage, F-G, (11)
£60-80



335. Bachmann and Hornby OO Gauge Diesel Locomotives, partially boxed examples by Bachmann D9008 The Green Howards, D900 Royal Scot Grey, 55002 The Kings Own Yorkshire Light Infantry and D9004 Queens Own Highlander all in TMC boxes three minus inserts none with certification and a boxed Hornby TMC D5597 weathered with gold TMC label to underside, minus certification, all in BR green with no obvious damage, G, Boxes G, (5)
£100-150

336. Bachmann OO Gauge Diesel Locomotives, an unboxed group of Class 55 locomotives BR blue 55013 The Black Watch, 55020 Nimbus and 55012 Crepello, together with BR green D9005 The Prince of Wales Own Regiment (loose body), D9019 Royal Highland Fusilier and D9021 Argyll & Sutherland Highlander (one name plate reglued poorly), F-G, (6)
£60-80

337. Lima OO Gauge British Outline Diesel Locomotives, all unboxed, Class 47 Fire Fly (damage to under carriage) and Royal Engineers Postal & Courier Service both in Intercity livery, Class 52 Western Champion Br Tan livery and Western Gladiator in BR maroon, Class 55 Meld in BR green, Class 50 Defiance in Railfreight livery, Class 43 Rapid in BR maroon, Class 73 The Royal Alex in Pullman livery, Class 33 024 in BR blue and a DMU dummy unit W51332, some with damage, G, (10)
£60-80

338. Hornby and Other OO Gauge Diesel Locomotives, boxed Hornby (Margate) examples a Toplink Class 58 R2034 in EWS livery, R122 Hymek, R751 Class 37 130, Intercity 125 two car high speed train, all in BR blue, and R268 Intercity Driving Van Trailer, unboxed Hornby D7596 in BR green, Hornby (China) Class 56 083 in black Load Haul livery Triang R357 D5572 in BR green and Mainline both BR blue Class 45 The Manchester Regiment (2), Some with damage, F-E, Boxes P-G, (10)
£80-100

339. OO Gauge British Outline Unboxed Goods Wagons, a large collection by various manufacturers including tank wagons, trucks, vans, Bogie Bolster, Hoppers, and others, private owner, BR and older, Bachmann (12), Mainline (15), Hornby (25), Lima (20) and others including Wrenn, Airfix, Triang and others (10), together with a cased Intertrans 512301 1:148 scale Grocontinental MAN truck and trailer, some with damage, F-G, Case G, (80+) in three boxes
£100-120



340. OO Gauge Mainly British Outline and Kit Built locomotives and Rolling Stock, a collection of kit built static and running models, examples by Ratio, Cooper Craft, Kitmaster, Airfix, some white metal goods wagons and others includes some ready to run examples Hornby Fighter Pilot (no tender) Jouef tank locomotive and others, Many with damage P-F, (Qty) in two boxes
£50-80



341. Triang and Hornby OO Gauge Lineside Accessories and Catenary, various items, unboxed grand suspension bridge, Hornby Dublo two road engine shed and extension set, Triang platforms, station accessories and buildings all unchecked for completeness, Triang Hornby boxed Catenary R416, R291, (unchecked for completeness) with other loose overhead components, R505 Water Tower and R657 Girder Bridge, boxed but unchecked and other lineside accessories, P-G, Boxes F, (Qty) in three boxes
£80-120

342. OO Gauge Track and Lineside Accessories, various items, Peco Streamline left and right points boxed (9) Double Slip boxed and unboxed crossover, Lima boxed 3045 diamond crossover (2) and other loose track Triang and Hornby, plastic kit built line side buildings, Metcalfe card kits 0801 Goods shed, PO215/P2015 goods sheds (factory sealed) and others opened, four 1980s Roco catalogues and various empty locomotive and rolling stock boxes by Hornby, Mainline Lima and others, P-E, Boxes P-G, (Qty) in two boxes
£50-60

343. OO Gauge Airfix and Similar Plastic Kits, various examples, four 1960s Nabisco Foods promotional Airfix/Kitmaster examples, two 350 Diesel Shunters, BR maroon Restaurant Coach and SR Brake Coach, and a Deltic English Electric locomotive, all in original postage packets with 1963 post marks and bags with instructions, together with a collection of boxed kits all appear incomplete or spares, Airfix (13) R1 BR tank wagon (4), R9 Saddle Tank (2), Evening Star R401 (3) R502, Biggin Hill R501 (2) and Harrow R402, together with Kit Master No 5 Harrow (No 14 SR Corridor coach, No 11 Biggin Hill (3), No 34 NY Central Hudson and No 19 Baureih 23, P-E, Boxes P-F, (Qty)
£50-80

344. American HO Gauge unmade Locomotive Kits by Bowser, comprising 'Casey Jones' 4-6-0 ref #101100, Pennsy H-9 'Consolidation' 2-8-0 #100900, Pennsy E-6 Atlantic #100600, and UP 'Challenger' 4-6-6-4 (loco only) kit ref 1-100300, some part constructed, all appear to include motors and wheels, in original boxes with instructions and some additional packeted parts (e.g. couplers etc.), all G, boxes G, all appear largely complete but not checked exhaustively, together with parts of a Challenger tender kit, P-F (5)
£80-120

345. American HO Gauge Locomotive Kit Components by various makers, including parts of two large 4-6-6-4 articulated locos, a 4-6-0 and a 2-8-0, an Athearn F7 diesel dummy in UP yellow, numerous motor units, wheels, diesel bogies and underframes and many other parts, mostly G (qty)
£80-120



346. A part-constructed 00 scale (Broad Gauge) GWR 'Rover' 2-2-2 Locomotive and Tender, from a K's Milestones kit, designed to run on approx. 30mm Gauge track, boiler assembly mostly assembled with the remainder in original kit-form, overall F-G, lacks motor and instructions, in non-original box, all major components appear present but not checked exhaustively
£60-80

347. Made-up Kit-constructed 00 Gauge GWR Tank Locomotives, a 14xx 0-4-2T from K's kit in BR lined green, un-numbered, 0-6-OPT no 9753 with white-metal kit body on re-wheeled Hornby-Dublo 'R1' chassis, in plain green, both F-G, and a Kitmaster plastic 2-6-2T 'Prairie' in original kit box, (unpowered), F (3)
£80-120

348. Part-made Kit-constructed 00 Gauge GWR Heavy Freight Locomotives, a 'ROD' 2-8-0 and tender in plain green, (boiler and buffer beam detached from footplate, with K's motor but lacking worm), an incomplete 28xx 2-8-0 and tender (lacks motor and some other parts, boiler detached), and an incomplete 72xx 2-8-2T, unpainted, lacks motor and some other parts, all F (3 models)
£70-100

349. A Kit-built 00 Gauge LMS Beyer-Garratt 2-6-6-2 Locomotive, believed to be from a DJH kit and with twin Portescap motor units, competently made and finished in weathered LMS black as no 7968, G-VG
£100-140



350. Unmade 00 Gauge Vintage Kit GWR Locomotives by K's, of the 'Milestones' series, Kit ML5 Dean 'Single' 4-2-2, and ML7 Armstrong 4-4-0, both VG, sealed in original blister packs, boxes G-VG, motorising units are NOT included (2)
£100-140

351. Unmade 00 Gauge Kit Locomotives by K's, including one of the 'Milestones' series, Kit ML4 Metropolitan Rly 4-4-0T (without motorising unit), and 'standard' series L12, a Midland Kirtley outside-framed 0-6-0 and tender, and L20 Stroudley 0-6-0T 'Terrier', all in original blister packs with instructions, the later two including motors (3 kits)
£100-140



352. Unmade 00 Gauge Vintage Kit LNWR Locomotives by K's and M&L, Kit ML2 of the K's 'Milestones' series, LNWR 'Problem' class 2-2-2 and tender, sealed in original blister packs and including nameplates for 'Lady of the Lake' or 'Pandora' but no motorising unit, together with M&L Premier Kits 'Cornwall' 2-2-2 and 6-wheeled Coupe with added wheel sets and other detailing parts but no motor, both kits VG, boxes G-VG, not checked exhaustively (2 kits)
£100-140

353. Unmade HO Gauge Continental Kit Locomotives by K's, including Kit 1750, French 'Buddicom' 2-2-2 (with motor), CML1, Spanish Railways 'Mataro' 2-2-2, without motor but some additional wheels included, and kit CL-7, a Danish 'P' type Atlantic 4-4-2, with motor and gears, all VG in original blister packs with instructions (3 kits)
£120-160

354. Unmade and part-made 00 Gauge Southern Railway Kit Locomotives, comprising part-constructed Craftsman 'Lord Nelson' 4-6-0 with bogie tender, chassis, body and tender mostly made up but without motor, an unmade Craftsman 'T1' class 0-4-4T including instructions, motor and gears, and a McGowan Models ex-LSWR B4 class 0-4-0T body and chassis kit without motor, all G-VG, not checked exhaustively for completeness (3 kits)
£100-140

355. Unmade and made-up 00 Gauge LNER Kit Locomotives, an unmade K's ROD 2-8-0 kit with wheels, transfers and instructions but not including motor and gears, in non-original box, unchecked, with a made-up class Y7 0-4-0T from Nu-Cast kit, with motor installed, finished in a freelance gloss blue and red livery, F-G, a little heavily painted, handrails missing (2)
£60-80

356. Unmade and part-made 00 Gauge Southern Railway Kit Locomotives, comprising part-constructed Jamieson brass 'Lord Nelson' 4-6-0 without motor or tender, a substantially-complete nickel-silver original 'Merchant Navy' 4-6-2, on modified H-D chassis without motor but including etched plates for 21C1 'Channel Packet', a constructed but unpainted Wills Finecast ex-LBSC I3 class 4-4-2T (motorised), and a stripped Hornby-Dublo 'Barnstaple' body with original-finish tender, and other parts, varying P-VG (qty)
£80-120



357. Unmade 00 Gauge Coaching Stock and other kits, including 5 Ratio plastic MR coach kits (two 710, one 711 and two 713), a PC models SR (ex-LSWR) corridor brake coach, a Slater's P.O wagon kit 'Lightmoor', two MTK Ore/mineral wagon kits, an unmade Q-kits white-metal loco body only kit for a Bulleid 1-Co-Co-1 diesel (10201-3), some parts of another coach and a made-up shunter's truck, varying F-VG, kits appear complete but not exhaustively checked (qty)
£60-80



358. A large assortment of 00 Gauge Locomotive and other Components, including a mostly-assembled K's Beattie 'Falcon' class 2-4-0 locomotive and tender, various motors, wheels, gears, a Hornby 9F chassis block, assorted transfers (mostly GWR and LMS, H&M 'Clipper' controller and two multipack extension controllers, a Gagemaster dual controller, a Wills Engine Shed kit and Dornaplas Sand Furnace kit, both unmade, and four small drawer-units with multifarious small screws, people, and other parts or accessories, varying P-VG, (qty in two tubs)
£100-140

359. Hornby-Dublo and Gaeity (Murcott) 00 Gauge Locomotives and other items, a boxed H-D 3-rail class 8F 2-8-0 no 48158, G-VG, box G, a Gaeity GWR 57xx pannier tank locomotive for 2-rail with a spare body for same, F-G, a fine scratch-built metal footbridge, G-VG, 2 boxes Dinky Toys no 1003 passengers (unchecked), unboxed Wrenn Pullman car no 77, G, two scruffy H-D brake vans and an empty box for H-D 2-rail diesel shunter, P (10)
£70-100



360. An uncommon but repainted Graham Farish 00/HO Gauge American 'Hudson' Locomotive and Tender, in original wooden box, with 2-rail pick-ups via tender to loco-mounted 3-pole motor, the upper works overpainted in gloss green as NYC no 5405 (chassis and tender underframe in original finish, as repainted F, box G
£60-80

361. A Boxed Formo (Graham Farish) 00 Gauge 3-rail Goods Set, with 'Q'-type 0-6-0 locomotive, tender, wagons and circle of track, in original box with all dividers and packing pieces, VG-E, loco appears never run, slight corrosion to tender wheels, box G-VG, a little discolouring to label
£70-100

362. Tri-ang-Hornby 00 Gauge BR Rolling Stock, including Blue Pullman 'Nanking blue' trailing end car, black Engineer's coach, SR utility van and two 9" coaches, three Pullman cars, SR suburban brake coach, three Thompson LNER 'teak' coaches, 1 green and 1 crimson BR mk 1 coaches, blue/grey mail coach, bogie crane wagon, car transporter and others, mostly G, some with couplings modified (qty)
£50-70



363. Tri-ang-Hornby 00 Gauge Transcontinental and Battle-Space Rolling Stock, including 'Davy Crockett' 4-wheel caboose G, decals slightly rubbed, 3 later 'ribbed-roof' blue coaches, RASC ambulance car, 6 silver or silver/red coaches, snowplough (missing one 'wing'), red and blue Shell tankers, Speedy Service grey box car, stock car, refrigerator car, four NATO 'Trestrol' wagons and other items, mostly G (qty)
£80-120

364. An uncommon Tri-ang Continental Market 00/HO Gauge 2-6-2T Locomotive, of the German style with twin domes, red chassis and driving wheels and blank cab-side panels, VG, in non-original box
£60-80

365. A rare boxed early Tri-ang 00 Gauge R52 'Jinty' 0-6-0T Locomotive, of the very first production with spelt-out 'BRITISH RAILWAYS' in yellow to the side tanks, F-G, both coupling hooks broken and rear buffers missing, slight distortion to body, in original 'Richmond' box, box P-F
£50-70

366. Trix and Liliput 00 and HO Gauge Trains, a boxed 2-rail Trix 'Western Enterprise' D1000 (cat ref 1163) with single motor in BR blue, VG, nameplate silvering rubbed, with an unboxed Pullman car 'Adrian', G, and a boxed Liliput ref 144 53 two-car Swiss railways electric multiple unit, in SBB grey/blue livery as RBDe 4/4 2102, VG-E, box VG (4)
£60-80



367. Jouef Playcraft OO/HO Gauge and Lima HO Scale BR Diesel Locomotives, various items mostly Jouef for Playcraft but some Jouef France including, CIWL coaches in blue livery P860 dining, P460 Baggage both boxed and three unboxed, 8600 restaurant and 8620 sleeping car, CIWL blue and cream liveried coaches 8160 (3) boxed and one unboxed, five boxed FNR coaches in green livery P453 (4), P452, FNR grey PR451 boxed and two unboxed, unboxed SNCF red restaurant car, boxed P850 Post Office Van, boxed P6571 Car Transporter with cars (3), P467 Heater Coach and two others unboxed GWR, various boxed goods wagons, P647, P6241 (3), P625 (3), P623, P647, P626, P624, P622 (4) P6511 (6), P6531 (2) 6240 (2), 6260 (3) two unboxed for Playcraft, boxed P686 girder bridge and unboxed diesel shunter, together with three unboxed lima HO scale BR diesel locomotives D6524 in BR blue and a similar coach in green livery, F-E, Boxes F-G, (Qty)
£80-120

368. Jouef Playcraft OO/HO Gauge SNCF Electric Train and SNCF Coaches, a SNCF Budd six car electric train in silver livery powered (one coupler damaged) and dummy units and one coach unboxed, with three boxed coaches Jouef 183 and Playcraft P866 (2) together with a rake of SNCF coaches all in silver livery boxed 5580 1st class (5), 4693, 5593 and another unboxed, F-E, Boxes F-G, (14)
£50-80

369. Jouef HO Gauge Trans Europ Express Train Set and Coaches, a boxed P756 set includes CC40101 high speed twin pantograph locomotive three coaches and track, together with an additional rake of eight matching coaches, boxed examples 8640, 5550 and 8650 and four unboxed, F-E, boxes G, (9) £60-80



370. Jouef HO Gauge 85 Tonnes Cockerill Crane Set and Kangarou Set, a boxed 6963 85 T Cockerill Crane Set, and a boxed 664 Kangarou road rail set, both appear complete but unchecked, together with boxed additional wagons and containers Kangarou, Jouef boxes 665 (3), Playcraft boxes 665 (3) an unboxed Calberson container and three wagons, G-E, Boxes F-G, (12) £60-80

371. Jouef HO Gauge French Steam Locomotives and Tenders, a boxed group of four SNCF examples 8260 Nevers 241 P7, and 8269 Venissieux 141 P102, both in green livery, together with 8283 Verdun 34X 140 C 180 and 8282 Mantes 140 C 231 both in black livery, G-E, Boxes F-G, (4) £100-120



372. Jouef HO Gauge French Steam Locomotives, a boxed group of four SNCF examples locomotives with tenders 8273 Miramas 141 R 1246 in black livery, 8274 Reims 141 R 416 and 8255 Calais 231 K 82 both in green livery together with tank locomotive 8292 Batignolles 040 1A 28 also in green livery, G-E, Boxes F-G, (4) £80-120



373. HO Gauge French Steam Locomotives and Tenders, all boxed SNCF, in green livery, Lima 3002 L 141 R 1097, Rivarossi (cased) Calais 231 E 22 and Lilliput 104 70 Troyes 230 F 317, together with Piko 190 Y 1993 52 19-20, in black livery, F-E, Boxes P-G, (4) £100-120

374. HO Gauge German Steam Locomotives, a boxed trio, locomotives with tenders both of the K.Bay.STS.B Märklin 3092 S3/6 3673 and Trix 2408 3694 P3/5 and tank locomotive 2428 T13 7901 of the KPEV all in green livery, G-E, Boxes F-G, (3) £80-120

375. HO Gauge Märklin and Fleischmann German Steam Locomotives and Tenders, two stream line examples Märklin 3089 BR 03 1055 of the DR in maroon livery and Fleischmann 4172 BR 03 1074 of the DR in black livery, both with German Imperial eagle crest to tenders, G-E, Boxes F, (2) £80-120



376. HO Gauge Fleischmann German Steam Locomotives and Tenders, two boxed examples 4171 stream line BR 03 1081 of the DR in black livery with German Imperial eagle crest to tender and 4170 BR 01 220 of the DB in black and red livery, G-E, Boxes F-G, (2) £80-100

377. HO Gauge Fleischmann and Kleinbahn German and Austrian Steam Locomotives and Tenders, four boxed examples Fleischmann German examples all in black livery of the DB 1351 BR 55 2875, 4140 BR 24 074 (weathered) and 4145 BR 55 674 also in weathered livery together with Kleinbahn D52 BR 52 1719 with tender 9793 of the OBB, F-G, Boxes P- F, (4) £60-80

378. Fleischmann HO Gauge German Steam Locomotives, three boxed examples 4080 BR 65 014, 4095 T16 BR 94 and 1316 BR 70 091, together with BR 65 018 with incorrect box, all of the DB in black and red livery, F-G, Boxes P-F, (4) £60-80

379. Rivarossi HO Gauge Steam Locomotives and Tenders, three boxed examples 04115 A BR 17 1137, 4112 BR 58 2059 both of the DB in black and red livery and 43201 C5/6 2976 of the SBB in black livery, G-E, Boxes F-G, (3) £80-120

380. Rivarossi and Lima HO Gauge Steam Locomotives and Tenders, three boxed examples Rivarossi 1347 P10 2811 in grey livery of the KPEV, 11333 BR 18 601 of the DB in black and red livery and Lima 3003 BR 39 243 also of the DB in black and red livery, G-E, Boxes F, (3) £80-100



381. Piko HO Gauge Steam Locomotives and Tenders, all of the DR in black and red livery, three boxed examples, 120 BR 52 2006, 138 BR 55 3784, BR 01 0503-1 (some damage) and unboxed BR 42 0001 of the DB/DR, G-G, Boxes P-F, (4) £60-80

382. Piko HO Gauge Steam Locomotives, six boxed examples 5/6332 BR 95 0028-1 tank locomotive of the DR in black and red livery, BR 427 0500 locomotive and tender of the CSD (Czechoslovakia Railway) in black and red livery, 139 BR 66 002 of the DB in black and red livery, BR 86 1800-1 of the DR, BR 32 917 SNCF in green livery and BR 18 31 also in green livery of the Kay. Bat. STS. B both tank locomotives, F-G, Boxes P-F, (6) £80-100



383. Lilliput HO Gauge German Steam Locomotive and Rheingold Coaches, a boxed group 105 02 BR 05 003 of the DR in grey livery with German Imperial Eagle, together with a rake of five Rheingold coaches in purple and cream livery 821, 822, 823, 824 and 825 (some damage to under carriage), F-E, Boxes G, (6) £60-80

384. Fleischmann and Lima HO Gauge Electric Locomotives, four boxed examples Fleischmann 4340 Re 4/4 11156 in green livery and 4341 Re 4/4 11156 in maroon and cream livery together with Lima 208156 Ee 4/4 11116 in maroon livery and 208048 Re 11103 in tan and cream livery, all of the SBB, G-E, Boxes F-G, (4) £80-100



385. HO Gauge Electric Locomotives, three boxed examples HAG 221 Re 4/4 10035 and Lima 2081471 Re 6/6 11424 both of the SBB in green livery and Roco 4128B BR 169 003-1 in red livery of the DB, G-E, Boxes F-G, (3) £80-100



386. HO Gauge Electric Locomotives By Jouef and Piko, two Piko examples E 244 068-3 (boxed) and E44 131 (partially boxed) both of the DR in green livery, together with boxed Jouef 8482 202 9120 in green livery and unboxed Jouef CC 7140 in green livery and BB-13001 also in green livery all of the SNCF, F-E, Boxes P-F, (5) £80-100

387. HO Gauge Electric Locomotives, various boxed examples Piko Czechoslovakian ES499 in blue and cream livery of the CSD and Jouef 8354 BB 17029 in cream and yellow livery of the SNCF, together with Lima 208121 E1802 of the SNCF in silver/blue/yellow livery, 8033 BB 9200 of the SNCF in red livery and unboxed CC-21001 in silver and red livery also of the SNCF, F-E, Boxes F-G, (5) £80-100



388. HO Gauge Electric Railcars and Locomotives, various examples a boxed Märklin 3125 Red Arrow locomotive Rbe 2/4 203 of the SBB in red livery (converted to 2 rail), Lima 8031 Railcar Rbe 4/4 1435 in green SBB livery together with two boxed SBB coaches in green livery 309112, 309268K, HAG 421 rail car in green SBB livery and 468 railcar in blue and cream BLS livery, F-E, Boxes F-G, (6) £80-100

389. HO Gauge Lima Electric Golden Series High Speed Train Pack, a boxed 9730 Golden Series four car train of the Austrian OBB in cream and blue livery, G-E, Box G-E £60-80

390. Lima HO Gauge TGV High Speed Train, a five car train individually boxed in orange/grey/white TGV livery 201095, 20196, 20197, 20198 and 20199, G-E, Boxes G, £50-80

391. HO Gauge Märklin and Lima Diesel Rail Cars, three boxed examples Lima 208037 515 591-6 of the DB in maroon livery and Märklin two car example 8328 515-023-0 (boxed) and 8428 515 -616-8 (in incorrect box), both in blue and cream livery of the DB, G-E, Boxes F-G, (3) £60-80

392. HO Gauge Lima Diesel Locomotives, four boxed examples 1630L V160 011 of the DB and 8109L 1401 of the DSB both in red and black livery and FS Italian Railways 20 8151 D445 in green livery and 20 8152 D445 in silver livery, G-E, Boxes F-G (4) £80-100

393. HO Gauge Diesel Locomotives, six boxed examples Piko BR 118 059-5 in blue and cream livery of the DR and BR 106 256-1 shunter in orange livery also of the DR, Lima 208144G Bm 4/4 18414 of the SBB, AHM SNCF diesel Shunter in green livery Mehano T041 216 016-6 of the DB in maroon livery, Jouef 8531 BB 66 150 of the SNCF in blue livery and another Jouef example unboxed, P-E, Boxes F, (7) £80-100

394. HO Gauge Swiss and German Coaching Stock, various examples in various liveries SBB, DSG, DB, DSB and others examples by Lima 309339, 1005, 309245, 309175 (all boxed) and three others, Pocher 209 boxed, Piko, Mehano and Fleischmann both boxed and two others unboxed, together with a boxed Lima Spanish example 309165, F-E, Boxes P-G, (15) £50-80

395. HO Gauge French and Italian Coaching Stock, various examples in various liveries SNCF, CIWL and others, examples by Jouef 8682 (boxed) 4500 (2) and 4501 (3) all cased and two unboxed, Lima 301033 boxed and four green SNCF unboxed, Fleischmann unboxed, Rivarossi 2513 FS CIWL cased Pocher boxed FS CIWL, and another, P-E, Boxes P-G, (17) £50-80



396. HO Gauge Goods Wagons, mainly by Lima includes postal van, container wagons, cement tank wagons, trucks and others 2843 (3), 2821, 2830, 2802 (2), 3103, 30287W (2), 309335 and 309328 all boxed, Jouef 6730 and Roco 4329 both boxed Mehano (two boxed), together with nine unboxed examples by various manufacturers, F-E, Boxes G-E, (25)
£50-80

397. Lima HO Gauge South African Australian and American Goods Wagons, a boxed group, five 2917 SAS Railways petrol tank wagons, Australian 309342 Brake van in brown livery and ATSF 3253 American flat truck, G-E, Boxes F-G, (7)
£50-60

398. HO Gauge Steam Locomotives by Rivarossi and Jouef, an unboxed group Jouef SNCF 23.C.60 (2) locomotives with tenders black/brown livery and Rivarossi L 625 FS locomotive and tender and 1337 SNCF Pacific Nord La Chapelle 3.1173 locomotive and tender in brown livery, both partially boxed, small French locomotive and tender (damaged) and two tank locomotives 1340 98009 of the DR and Italian FS 1117 both in black livery, P-G, Boxes P, (7)
£50-80

399. Airfix American HO Gauge Steam Locomotives and Rolling Stock, a boxed collection, three Old Time locomotives with tenders 54170-5 Central Pacific Rail Road Jupiter (2) and 54171 Union Pacific, together with a rake of Central Pacific coaches 54051-5 Trap Door Coach (4) and 54051-5 Exploding Car (2) all in red and yellow livery, Union Pacific Box Car 54279-4 (2) in red livery and Caboose 54171-1 in yellow livery, G-E, Boxes F-E, (12)
£60-80



400. Rivarossi American HO Steam Locomotives and Tenders, five boxed/cased examples 1238 Norfolk & Western Mallett 2197 and 1200 Union Pacific Challenger 3977 both boxed in black livery and cased 1527 Union Pacific 4-8-4 in grey livery, 1273 New York Central Hudson 5446 in grey livery and 1255 Baltimore & Ohio Santa Fe 6206 in black livery, both cased, G-E, Boxes/Cases P-F, (5)
£100-150

401. HO Gauge American Steam Locomotives and Tenders, a boxed group of seven, Bachmann 400652 Consolidation 2-8-0 in black Canadian National livery, 41-545-01 Mikado and 657 Mikado both in black Union Pacific livery, Mehano T006 4-6-2 Atlantic Coast Line 1523 in black livery (2) and Life Like Trains 08328 New York Central 85 also in black livery, G-E, Boxes P-G, (7)
£80-120



402. HO Gauge American Steam Locomotives and Tenders, four boxed examples Mantua 322-01 Mikado 217 with power drive in black Santa Fe livery, Bachmann 657 Mikado in Union Pacific black and silver livery, IHC 455 4-8-2 Mountain M629 6064 in black Canadian National livery and Spectrum by Bachmann 84114 Pacific K-4 5475 in black Pennsylvania livery, G-E, Boxes F-G, (4)
£100-120

403. HO Gauge American Steam Locomotives and Tenders, five boxed examples Bachmann 657 Mikado 2528 in black and silver Union Pacific livery (2), 667 The Texas Chugger 5012 in black Santa Fe livery and 50803 4-8-4 3783 in black Santa Fe livery together with AHM 5114 Big Boy 4005 in black Union Pacific livery (minor damage apparent), F-E, Boxes P-G, (5)
£100-150



404. HO Gauge American Steam Locomotives and Coaches, a boxed collection, Bachmann 657 Mikado 2528 in black and silver livery, 720 4-6-0 2302 in black Chicago & North Western Railway livery, 41-651 2-8-0 705 in black A.T. & S.F. livery together with 672 Southern Pacific 4-8-4 1454 in Daylight livery and three matching passenger coaches by Con-cor, G-E, Boxes F-G, (7)
£80-100

405. HO Gauge American Diesel Locomotives, three boxed EMD E8 two car units Rivarossi for Con-Cor 907 Southern Pacific in Daylight livery and Rivarossi 1955 New Haven black/red/white livery and 1961 Delaware & Hudson silver and blue livery, G-E, Boxes F-G, (3)
£60-80

406. HO Gauge American Diesel Locomotives, seven boxed examples GP locomotives Bachmann 0636 GP30 Southern Pacific in grey livery, 0612 GP50 Northern & Western, and 0568 GP40 Canadian National, Lionel GP9 Penn Central and Life Like Trains 08298 GP38 P&L E all in black livery together with Life Like Trains GP38 in blue GT livery and AHM 5015B Alco Century 424 in black and orange livery, F-E, Boxes P-F, (7)
£60-80



407. HO Gauge American Diesel Locomotives, six boxed examples Lionel GP9 T12010 Ontario Northland yellow and blue livery and GT blue livery, Life Like Trains Alco C415 Santa Fe blue and yellow livery, AHM GE U25-C 5054C in Northern Pacific black and yellow livery, Tyco F9 A unit in New Haven black and orange livery and a Bachmann 609 Amtrak Plasser EM80C track cleaner, F-E, Boxes P-G, (6)
£50-80

408. HO Gauge American Diesel Locomotives By Model Power and Kato, five boxed examples Kato EMD SD40-2 37 2909 Union Pacific 3379 in yellow and red livery and Model Power 910 EMD E7 A unit in silver and red Santa Fe livery, 6803 SD-40-2 in Southern Alberta silver/yellow/blue livery and Alco C 628 locomotives 6682 Santa Fe blue and yellow livery, 6685 P&L E green livery, G-E, Boxes F-G, (5)
£60-80



409. HO Gauge American Diesel Locomotives, eight boxed examples, Life Like Trains 311 F7 in Chessie System yellow and orange livery, Lionel Alco 5600 in Santa Fe silver and blue livery and EMD 0565 in Santa Fe silver and red livery, together with Bachmann 0680 EMD FT (2), 0676 EMD F40PH all in Santa Fe silver and red livery, F9A 9162 in Canadian National black/white/red livery and Life Like Trains F7B dummy unit in white SOO livery, F-E, Boxes P-G, (8)
£60-80

410. HO Gauge American Diesel Locomotives, a boxed collection including four locomotives Con-Cor 0015-002130 EMD E7A New York Central grey livery, Athearn 3303 PA-1 powered in New York Central grey, AHM 504E BL-2 Western Maryland black and yellow livery, Rivarossi (cased), EMD E8 Northern Pacific black and green livery together with Proto 1000 Series 23975 Budd Boston and Maine Rail Car in silver livery, an IHC 6175 E-8 Powered B unit in black and green Reading livery and Mantua 412-022 F7 New York Central dummy unit black and grey livery, F-E, Boxes P-G, (7)
£80-100

411. HO Gauge American Kit and Ready To Run Coaching Stock, various examples in various rail road liveries boxed examples by IHC (4), Rivarossi (2), AHM (2), Bachmann (2) and Scenemaster, ten boxed constructed/partially constructed Athearn kit coaches (four Southern Pacific) plus another unboxed, unboxed Union Pacific (5) four others unboxed and a boxed IHC coach interior kit 20154 (unchecked), F-G, Boxes P-F, (30+)
£50-80



412. HO Gauge American Goods Wagons and Kit Coal Bunker, a boxed collection in various liveries includes box cars, Caboose, reefer cars, tank wagons, trucks and others examples by Tyco, Mehano (2), Life Like Trains (9), Train Miniature (3), AHM (2), Pemco (3) and PMI, together with an IHC un made No 5000 Cheyenne 650 Ton Coal Bunker 1:87 scale appears complete with instructions but unchecked, G-E, Boxes F-G, (22)
£60-80

413. HO Gauge American Mainly Kit Built Goods Wagons, an unboxed collection in various liveries includes box cars, Caboose, reefer cars, tank wagons, trucks and others (40+) together with several boxed kits partially constructed or incomplete, F-G, Boxes F, (40+)
£40-60

414. HO Gauge American Unboxed Diesel Locomotives and Spares, various examples including AHM FM A unit Illinois Central (partially boxed), Mehano Southern Pacific 3432, Lionel T12001, Bachmann Santa Fe 307, Bachmann Spectrum Santa Fe 806, and two others, together with a number of B units some boxed (5) and various dismantled locomotives, locomotive casings and bodies, P-F, Boxes P-F, (Qty)
£60-80



415. HO Gauge American Steam Locomotives and Locomotive Projects, unboxed locomotives with tenders Rivarossi New York Central 5442, Bachmann Spectrum Pennsylvania 1351 and Tyco Atlantic Pennsylvania 68 all in black livery (F-G), together with various partly dismantled or damaged locomotives examples by Mantua, Rivarossi, Life Like, Mehano and others and three boxed unmade kits Mantua 536 Atlantic Loco and Tender, and Roundhouse tender kits 403 Short Vanderbilt (2) all three appear complete but unchecked, P-G, Boxes F, (Qty)
£60-80

416. HO Gauge American Spectrum By Bachmann Diesel Locomotive, a boxed 85011 GE Dash 8-40C locomotive 9194 in yellow and red Union Pacific livery, E, Box G
£40-60

417. HO Gauge American Spectrum By Bachmann Steam Locomotive and Tender, a boxed 11426 Baldwin 2-8-0 Consolidation 154 NY New Haven & Hartford black livery, E, Box G
£50-80

418. HO Gauge American Spectrum By Bachmann Steam Locomotive and Tender, a boxed 81901 80 Ton Three Truck Shay in black livery unlettered with wood cab, E, Box F
£50-80

Buyers Premium with SAS & SAS LIVE: 20% plus Value Added Tax making a total of 24% of the Hammer Price

the-saleroom.com Premium: 25% plus Value Added Tax making a total of 30% of the Hammer Price

419. On30 Gauge American Spectrum by Bachmann Steam Locomotives, boxed 25211 2-6-0 Great Northern 948 locomotive and tender in green and black livery (some corrosion to whistle) and 81221 Porter tank locomotive No 1 in black Colorado & Southern livery, G-E, Boxes P-F, (2) £60-80



420. On30 Gauge American Spectrum by Bachmann Steam Locomotive and Tender, a boxed 25999 2-8-0 unlettered in black livery DCC equipped, E, Box F-G £80-100

421. On30 Gauge American Spectrum By Bachmann Steam Locomotive and Gondolas, a boxed group 25757 28 Ton Two Truck Class B Climax locomotive in black Greenbrier & Big Run Lumber Co livery together with three 27857 High side Gondolas in brown livery also Greenbrier, E, Boxes G, (4) £100-120

422. On30 Gauge American Spectrum By Bachmann Goods Wagons, five boxed examples 27465 Billboard Reefer River Horse Brewing Co, 26995 Maintenance of Way Camp Car, 26995 Camp Dining Car, 27514 Stock Car and 26414 Baggage Car both Pennsylvania Rail Road, E, Boxes G-E, (5) £60-80

423. On30 Gauge American Spectrum By Bachmann Goods Wagons, six boxed examples 27711 Caboose red Great Northern livery, 27729 Caboose in brown Denver & Rio Grande livery, 27146 Tank Wagon silver Zerolene livery, 27312 Flat Car Baltimore & Ohio, 26199 Combine Car in unlettered olive green and 27699 ventilated box car in unlettered brown livery, E, Boxes G, (6) £80-100

424. On30 Gauge American Rail Truck, a boxed 29133 US Mail RGS 1 rail truck DCC ready, E, Box P £40-60



425. On30 Gauge American Closed Street Car, a boxed 125128 United Traction Co 1623 Street Car in cream and red livery, E, Box G £50-60

426. On30 Gauge Precision Craft Models Galloping Goose, a boxed 441 Galloping Goose M 1000 with passenger body, War Bonnet in silver and red Santa Fe livery, E, Box G-E £50-80

427. Sunset Models Korea Brass HO Gauge American Steam Locomotive and Tender, a boxed USRA Heavy 2-8-2 with some packaged components, G-E, Box G £100-150



428. Sunset Models Korea Brass HO Gauge American Steam Locomotive and Tender, a boxed USRA Heavy 2-8-2 with some packaged components, with original bill of sale from 1987 sold by M G Sharp Models Sheffield, G-E, Box G £100-150

429. Sunset Models Korea Brass HO Gauge American Steam Locomotive and Tender, a boxed USRA Heavy 2-10-2 with some packaged components, G-E, Box F-G £100-150



430. Sunset Models Korea Brass HO Gauge American Steam Locomotive and Tender, a Samhongsha (Sunset Models) boxed New York Central K5A 4-6-2 4912 in weathered black livery, (one small detached component appears to be from tender), retailed by Anchoridge Sheffield, G-E, Box F £100-150



431. Sunset Models Korea Brass HO Gauge American Steam Locomotive and Tender, a Samhongsha (Sunset Models) boxed lacquered brass Wheeling & Lake Erie J-1 4-8-2, G-E, Box G £100-150

432. V H Scale Models by Samhongsa Korea American HO Gauge Brass Steam Locomotive and Tender, a boxed Canadian Pacific Railway 2-8-0 with packaged components and decals, G-E, Box G £80-120

433. V H Scale Models by Samhongsa Korea American HO Gauge Brass Steam Locomotive and Tender, a boxed Canadian Pacific Railway Class F1A Jubilee 4-4-4 with packaged decals, E, Box G £80-120

434. Samhongsa Korea American HO Gauge Brass Steam Locomotive and Tender, an unboxed 4-4-4 F1A Jubilee Class (cow catcher detached), marked Samhongsha on locomotive and tender, G £60-80

435. Akhane Model Railroad Co Ltd Japan American HO Gauge Brass Steam Locomotive and Tender, a boxed USRA 2-6-6-2 articulated locomotive with some tarnishing and small areas of verdigris, G, Box F-G £120-160



436. Akhane Model Railroad Co Ltd Japan American HO Gauge Brass Steam Locomotive and Tender, a boxed USRA 6-6-2 articulated locomotive in black livery with some wear to paint, cab roof loose and small detached components, marked Akhane to tender, F, Box F £80-120

437. Akhane Model Railroad Co Ltd Japan American HO Gauge Brass Steam Locomotive and Tender, an unboxed USRA 2-8-8-4 Yellowstone locomotive, some tarnishing and appears to be missing cab steps/ladder on each side, marked Akhane to tender, G £100-150

438. Western Model Company American HO Gauge Brass Steam Locomotive and Tender, a boxed Katsumi Mokeiten Co Japan for Western Models California Southern Pacific 4-10-2 with packaged components, areas of surface tarnishing/corrosion, F-G, Box G £80-120

439. Olympia Precision Models Japan American HO Gauge Lacquered Brass Steam Locomotive and Tender, a boxed EH-131 Boston & Maine Class R1-d 4-8-2 with original factory certificate dated 1969 No 157 with names and stamps of inspectors from various areas of the manufacturing process, distributed in the US by Gem Models Philadelphia, some areas of tarnishing, G, Box G £150-200

440. N J International Custom Brass Korea American HO Gauge Lacquered Brass Steam Locomotive and Tender, a boxed ST-204 Baltimore & Ohio Class V-2 4-6-4 Lord Baltimore, E, Box P-F £200-300

441. Nickel Plate Products Japan American Brass HO Gauge Steam Locomotive and Tender, boxed with a plastic sleeve, Class L-1a 4-6-4 NYC & ST. L Nickel Plate Rd 177 locomotive in black livery, E, Box F £150-200

442. United Japan For Pacific Fast Mail American HO Gauge Brass Steam Locomotive and Tender, a boxed United by Atlas Industries Santa Fe 4-8-4 3776 in black A.T. & S.F. livery, E, Box P £150-200

443. Empire Midland Korea Lacquered Brass American HO Gauge Steam Locomotive and Tender, a boxed Midland Limited Series DL-104 Great Western 90 2-10-0, bell operation wire partly detached and one minor component detached, G, Box G £60-80



444. Dong Jin Korea For Hall Mark Models Dallas American Lacquered Brass HO Gauge Steam Locomotive and Tender, a boxed A.T.S.F. 3500 4-6-2 unpainted locomotive, with packaged components, tarnishing and corrosion mainly to engines top line and top of tender, F-G, Box G £80-120

445. Thistle Scale Models Japan American HO Gauge Brass Steam Locomotive and Tender, a boxed North West Short Line Class Q-6 4-6-2, some tarnishing and small areas of verdigris, distributed by M.G. Sharp Models, G, Box F £80-120



446. Korean Lacquered Brass American HO Gauge Steam Locomotive and Tender, a boxed 4-4-2 locomotive stamped Korea and hand written on box Hall Mark, G, Box F £80-100



447. Japanese Brass American HO Gauge Steam Locomotive and Tender, a boxed (no foam inserts) 4-6-0 locomotive unknown manufacturer but stamped Japan with packaged couplers, E, Box G £80-120

448. Tenshodo Japan Brass American HO Gauge Steam Locomotive and Tender, boxed (with no foam inserts) 137 Class S-1 Great Northern 4-8-4 3802 Northern locomotive with boxed matching tender both in black and Silver livery G-E, Box F (2) £100-150



449. Oriental Limited By Samhongsha Korea Brass HO Gauge American Steam Locomotive and Tender, a boxed Power House Locomotive Series 8051 Columbia River Belt Railway 2-8-2 Skookum in black, white lined livery, E, Box G-E £100-120



450. Japanese Brass Northwest Short Line American HO Gauge Brass Tank Locomotive, a boxed (minus foam inserts) Minarets Class Alco 2-8-2 no 16 of the Hammond Lumber Co (unpainted), G, Box F-G £60-80



451. Tenshodo Japan Rake of Seven Brass American HO Gauge Canadian National Coaches, all boxed with original packaging, finished in green/black/gold Canadian National livery 423 Baggage, 424 Coach, 425 Diner, 426 Sleeper, 427 Observation, 428 Vista Dome and 429 Combination all with fitted interiors, E, Boxes G, (7) £300-500



452. Balboa Precision Engineering Japan Brass American HO Gauge Alco Diesel Locomotive, a two car unit both boxed 602 A Unit No 51 and 622 B Unit both in silver/red/yellow Santa Fe livery, with serial number and initials to underside of B unit possibly the painter, retailed by Millholme Models Nottingham, E, Boxes F, (2) £200-300



453. NJ International Custom Brass Korea American HO Gauge Budd Rail Car, a boxed RDC 1 Budd Rail Car nickel plated silver finish, retailed by M.G. Sharp Models Sheffield, E, Box F-G £50-80

454. RTR Brass by Samhongsha Korea HO Gauge Great Western Railway Tank Locomotive, a boxed RTR 105 97xx class tank locomotive 20/150, G-E, Box G £60-80

455. RTR Brass by Samhongsha Korea HO Gauge Great Western Railway Tank Locomotive, a boxed RTR 102 55xx class lacquered brass 7/300, minor damage to cab roof corner and one detached small piece of pipe work, G, Box G £50-60



456. Fulgerex HO Gauge Brass French SNCF Steam Locomotive and Tender, a boxed Pacific 231 G 121 locomotive in green red lined livery of the SNCF, E, Box F £250-300

457. Cast Heavy Brass Anniversary Plaque 150 Years of British Passenger Trains, an un numbered limited edition plaque of 3000 depicting The Rocket alongside a 1975 BR locomotive and train cast at B.R.E.L. Swindon 23 cm high, E £50-80



458. Cast Heavy Brass Plaque Commemorating The Deltic Locomotives, a limited edition plaque 599/3000 cast from brass salvaged from scrapped Deltic Locomotives at B.R.E.L. Swindon, stamped G171 on reverse, (with casting crack) 19cm high £40-60



459. Cast Heavy Brass Anniversary Plaque Golden Jubilee of Steam Locomotive King George V, an un numbered limited edition plaque of 1000, issued in 1975 of rectangular form 30cm wide by 20cm high, E £50-80

460. Two Unmade Plastic Kits Rocket and Orient Express, both boxed Gakken 81599-800 1:26 scale 1829 Rocket and Revell 2190 1:87 scale Orient Express locomotive and two coaches (one package of parts open with some components detached) both with packaged contents and appear complete with instructions but unchecked, G-E, Boxes F-E, (2) £30-50



461. Atlas Editions and Del Prado Locomotive Models, a collection of 100 N Gauge plastic models Locomotives of the World (98 bubble packed), by Del Prado, together with OO Gauge examples by Atlas Edition and similar (6) mainly packaged, G-E, (Qty) in three boxes £50-80

462. A Leeds Model Co 0 Gauge 3-rail 0-4-0 'Box Tank' Locomotive, over-painted in black with bold stylised LMS lettering and no 7962 applied, as repaint F, frame stretchers 'fatigued' (though frames, wheels and motor block appear okay), minor damages to cab roof and all buffers £50-70



463. A Leeds Model Co 0 Gauge 3-rail 0-6-0 'Jinty' Locomotive, in original LMS black as no 7123, with pre-war LMC mechanism and modified pick-up arrangement, F, paint flaking in places esp left tank, rusting to cab roof, coal rails added to bunker, one foot-step and one chassis-fixing screw missing £60-80



464. A possibly Leeds or Scratch-built 0 Gauge 3-rail ex-MR Johnson 0-4-4 Tank Locomotive, appearing to incorporate a Bassett-Lowke motor and Leeds wheels, in LMS unlined black as no 1303, P-F, paintwork deteriorated throughout, some wheels 'fatigued', one buffer and rear bogie loose, pick-up shoe missing £80-120



465. A modern 0 Gauge 2-rail Freelance BR 0-4-4T Locomotive by unknown maker, with steel wheels, substantial motor with worm drive, finished in plain BR black with late totem and no 30583, G, bogie fixing nut missing £80-120



466. A Collection of coarse-scale 0 Gauge items, including four wooden open wagons (three hand finished in Reading Co-op, Bassett-Lowke and Parkend liveries), a modified B-L 0-6-0 tank loco body only, a Chad Valley red 3402 clockwork locomotive, early Bing GW tender, part-dismantled B-L or similar LMS black tender, a small 4-drawer unit of cast chairs and other track components, Hornby brass buffers and other items, a small quantity of Hornby clockwork track and an assortment of old buffers, varying P-G (qty) £50-70



467. Two part-completed Finescale 0 Gauge brass SR 4-4-0 Locomotives, a substantially-complete but unpainted SR 'Schools' class 4-4-0 and tender, with part of a Vulcan gearbox fitted but no motor, various finishing parts included in a bag (slide bars, smoke deflectors etc.), together with a less-complete T9 locomotive only from Charles Covey (Models), comprising only frames with driving wheels, cab, smokebox parts and boiler fittings (other parts not present), overall F-G (qty) £80-120



468. 0 Gauge American and Gauge 1 LSWR kit-built tenders, the American tender, well-made from a brass or similar kit, a 7-axle type suitable for 'Big Boy' or 'Challenger' locomotives, finished in gloss U.P. black, G-VG, together with an incomplete nickel-silver kit-built LSWR-style 'water-cart' tender, unpainted, lacking various components (2) £40-60



469. Lima and other Finescale 0 Gauge 2-rail Trains, Lima items including BR green class 33 diesel locomotive D6506, two GWR bogie coaches, several open wagons (some weathered) and a 'Toad' brake van, with a Rivarossi American 4-4-0 'Genoa' and tender in Virginia and Truckee RR livery, an unmade Peco GWR van kit and Slater's 'Norchard' PO open wagon, two hand-made finescale track turnouts and other items, mostly G-VG (qty) £50-80

END OF AUCTION



ABBREVIATED TERMS AND CONDITIONS

Please ensure you view the Full Terms & Conditions on our website

Specialist Auctions Ltd Trading as Special Auction Services referred to as The Auctioneer and to include any person acting upon his authority. In these Terms of Sale the words 'you', 'yours', etc. refer to you as the Buyer. The words "we", "us", etc. refer to the Auctioneer. English Law shall govern all transactions associated with this sale.

Conditions of Sale

Third Party Liability: All persons on the premises of, or at a venue hired or borrowed by the Auctioneers are there upon their own risk. They shall have no claim against the Auctioneer in respect of any accident, injury or damage howsoever caused.

Bidding procedures and the Buyer: You must register your details with us before bidding and provide us with any requested proof of identity and billing information, in a form acceptable to us. You must also satisfy any security arrangements we have in place before entering the auction room to view or bid. We strongly recommend that you attend the auction in person. You are responsible for your decision to bid for a particular Lot. If you bid on a Lot, including by telephone and online bidding, or by placing a commission bid, we assume that you have carefully inspected the Lot and satisfied yourself regarding its condition and authenticity. **The Purchase Price:** As Buyer, you will pay: a) the Hammer Price; b) a premium of 20% of the Hammer Price if bidding in the room; telephone bidding or leaving a commission bid directly with SAS; and for all bidding online via SAS LIVE; and a premium of 25% will be charged for all bidding online via the-saleroom.com c.) any artist's resale right royalty payable on the sale of the Lot; and d) any VAT due.

VAT: You shall be liable for the payment of any VAT applicable on the Hammer Price and premium due for a Lot. We will charge VAT at the current rate at the date of the auction. Items in our catalogue may be marked in the following ways: (*) indicates that VAT is payable by the buyer on the hammer price as well as being an element in the buyer's premium. VAT will be chargeable at the standard rate (presently 20%). This imposition of VAT is likely to be because the seller is registered for VAT within the European Union and is not operating the Dealer's Margin Scheme or because VAT is due at 20% on importation into the UK. (**) indicates that the lot has been imported from outside the European Union. [These lots are liable to the standard rate of VAT (currently 20%); in certain circumstances these lots will incur a reduced rate of VAT (5%) on the hammer price and buyer's premium]. The rate will be clearly indicated. Lots which do not have either of the above symbols have no VAT payable on the hammer price. This is because such lots are sold using the Auctioneers' Margin Scheme. The VAT included within the premium is not recoverable as input tax.

Payment: Immediately following your successful bid on a Lot you will pay to us the Total Amount Due within 7 days, by cash (maximum £10,000), debit card or bank transfer. Following the day of the sale, we will send out invoices to all successful telephone, online and commission bidders via email or post. We will wherever possible include on the invoice a charge for packing and shipping the lots purchased. Packing is undertaken in house and shipment is made by Courier or Royal Mail. Insurance cover on shipments is not automatically provided within this charge. We also reserve the right to ask the buyer to complete a disclaimer regarding this service prior to despatching the goods. Alternatively, you will (at your own expense) pay for and personally collect or arrange your own courier to collect any Lots that you have purchased. This must be undertaken no later than 7 days following the day of the auction. You may not claim or collect a Lot until you have paid for it. If you do not pay for or collect the Lot within this time period, you will be responsible for any reasonable removal, storage and insurance charges in relation to that Lot. **Warranties:** The Seller warrants to us and to you that: the Seller is the true owner of the Lot for sale or is authorised by the true owner to offer and sell the lot at auction; the Seller is able to transfer good and marketable title to the Lot to you free from any third party rights or claims; and as far as the Seller is aware, the main characteristics of the Lot set out in the auction catalogue (as amended by any notice displayed in the saleroom or announced by the Auctioneer at the auction) are correct. If, after you have placed a successful bid and paid for a Lot, any of the warranties above are found not to be true, please notify us in writing. Neither we nor the Seller will be liable to pay you any sums over and above the Total Amount Due and we will not be responsible for any inaccuracies in the information provided by the Seller except as set out below.

Descriptions and condition: Our descriptions of the Lot will be based on: (a) information provided to us by the Seller of the Lot (for which we are not liable); and (ii) our opinion (although it is likely that we will not be able to carry out a detailed inspection of each Lot). Weights and measurements given are all estimates. We will give you a number of opportunities to view and inspect the Lots before the auction. You (and any independent consultants acting on your behalf) must satisfy yourself about the accuracy of any description of a Lot. We shall not be responsible for any failure by you or your consultants to properly inspect a Lot. Representations or statements by us as to authorship, genuineness, origin, date, age, provenance, condition or estimated selling price involve matters of opinion. We undertake that any such opinion will be honestly and reasonably held and accept liability for opinions given negligently or fraudulently. Please note that Lots (in particular second-hand Lots) are unlikely to be in perfect condition. Lots are sold "as is" (i.e. as you see them at the time of the auction). Neither we nor the Seller accept any liability for the condition of second hand Lots or for any condition issues affecting a Lot if such issues are included in the description of a Lot in the auction catalogue (or in any saleroom notice) and/ or which the inspection of a Lot by the Buyer ought to have revealed. We will give indications of provenance where stated by sellers. It is imperative that potential buyers or their Agents inspect lots that interest them prior to the auction. Purchases of autographed materials and works are made at the risk of the purchaser. Subject to our Terms and Conditions we cannot accept returns on these items.