



Merry Christmas to all our clients, vendors & friends....



Dear Friends,

Well, another interesting year has almost passed us. A huge thank you to all our buyers and vendors for your support and patience during these unpredictable times. Our opening hours over the Christmas break can be found on our website.

We've had a relentless November, so as you can imagine our shipping department is in full swing. We will endeavour to ship your items ASAP, alternatively you're very welcome to either come and collect in person or arrange your own courier. We offer a safe click and collect environment. Simply pay by bank transfer, book an appointment and you're ready to be on your merry way.



Naturally safety remains a key priority for our clients and staff. Please remember to bring your face covering, hand sanitiser will be provided throughout the building

Let's talk auctions..... the final countdown begins. We have two giant auctions to present to you, both over two days! Trains Galore in Newbury & Antiques and collectables up in Dudley. We are certainly finishing the month with a bang or a cork pop.. both auctions are featured below. It's never too late to view, register and bid..- you won't be disappointed...

Finally, our auction dates for 2022 are being published on our website as we speak. Please visit our auction calendar for more information. If you wish to consign any of your items in our forthcoming auctions, please contact us.

Please call **01635 580 595** or email mail@specialauctionservices.com to make an appointment

We would like to take this opportunity to wish everyone a very Happy Christmas and a very prosperous new year.

From the team at SAS

A look back at a few of November's highlights

Mechanical Music Auction at Newbury

Tuesday 30th November

Lot 143 A rare key-wind musical box,

By Francois Nicole, No. 4379, with "Rigid Notation" grid on the cylinder, playing the overture to *Gazza Ladra* in two revolutions and *Andante & Allegro* from *Adelaide di Borgogna* (all Rossini), the comb in two main parts with 8-tooth section at treble end and five wider spaced extreme bass teeth and ogee profile to governor frame, in plain fruitwood case with exposed controls with turned handles, the interior lined in blue paper, with hand-written tune-sheet, with key (in very good playing condition; long-dead woodworm in case) (no serial number on base) -- 14 ¼ in. wide, the cylinder 10 x 2 ½ in. (25.2 x 6.2cm.) diam., 1822-25 (203 teeth) (Literature: see Ison, R: 'Boxes by Francois Nicole and Freres Nicole', *The Music Box*, Vol 21 No. 3, 2003; 'The Products of François Nicole and Frères Nicole', in *The Nicole Factor*, Chapter 3, (MBSGB 2006); and 'Francois Nicole and his Place in History', *The Music Box*, Vol 27 No. 2, 2015. The conclusion was made that the mis-named "rigid notation", or squared grid on the cylinders, was unique to Francois Nicole products, noted for their outstanding quality went under the hammer at our Newbury Saleroom for **£52,000 plus BP**





The Midlands highlight

Antiques & Collectables Auction at Dudley

Thursday 25th November

Lot 112 Art Deco diamond ring

Solitaire oval old cut diamond ring, the shallow cut diamond, in twelve claw setting, with diamond set shoulders, ring size L, diamond weight 1.68cts, 4.7g under the hammer at our Dudley Saleroom for **£1,600 plus BP**



Other Hammer Highlights from Newbury

Dolls & Teddy Bears Three day Auction at Newbury

Monday 22nd November

Tuesday 23rd November

Wednesday 24th November



Dolls & Teddy Bears - Day One

Lot 205 A rare Steiff prototype or trial sample of the 1991 British Collector's 1912 Replica black teddy bear, with swivel head, jointed limbs, brown stitched nose, mouth and claws, brass coloured script button and white cloth label, the back of label with handwritten number 0173/48 --19¼in. (49cm.) high went under the hammer at our Newbury Saleroom for **£280 plus BP**



Dolls & Teddy Bears - Day Two

Lot 336 An exceptionally fine and rare Steiff centre-seam teddy bear circa 1910, with golden mohair, black boot button eyes, pronounced clipped muzzle, black stitched nose, mouth and claws, swivel head, jointed elongated limbs with felt pads, card lined feet, hump, inoperative growler and FF underscored button --25in. (63.5cm.) high went under the hammer at our Newbury Saleroom for **£5,000 plus BP**

Dolls & Teddy Bears - Day Three

Lot 1297 A rare large scale Erzgebirge mid-19th Century painted wooden market, comprising three men in wide brimmed hats and circular bases, three women with narrow waists, patterned long dresses to the floor and their hair held in five buns around back of heads, another women with shorter tartan skirt and straw hat (missing legs), four wooden stall holding root vegetables, three other stalls with four barrels of dried goods, one with four very large mushrooms and a smaller table with charcuterie, four large barrels with soft fruits and another barrel with side cut out side, in large split-wood box with lid --4¼in. (10.5cm.) height of man, 19in. (48.5cm.) width of box (some slight damage and losses, missing some produce); contained in the same box is another small split-wood lidded box, a German (a different hand) carved wooden man in white suit with black shoulder bag --5¼in. (13.5cm.) high with house and dog from the same set; fourteen turned plain wood plates with turned painted fruit and vegetables --2¼in. (5.5cm.) diameter of plate; and three composition animals with wooden legs - this group was purchased from Christie's South Kensington in the 1980s went under the hammer on at our Newbury Saleroom for **£6,000 plus BP**



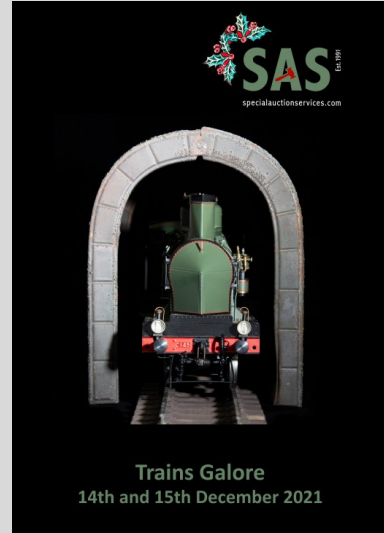
Our signature auction, all aboard for our Penultimate auction

Trains Galore

Tuesday 14th December at 10am

Wednesday 15th December at 10am

West Berkshire, Newbury



Catalogue

Trains Galore packs a punch this year..

DAY 1 Tuesday 14th December at 10am

Lot 1 to Lot 32 N and TT Gauge
Lot 33 to Lot 39 Tri-ang, Tri-ang Hornby and early Hornby 00 Gauge
Lot 40 to Lot 182 Hornby 00 Gauge
Lot 183 to Lot 254 Bachmann 00 Gauge
Lot 255 to Lot 282 Hornby-Dublo 00 Gauge
Lot 283 to Lot 300 Wrenn 00 Gauge
Lot 301 to Lot 306 Trix 00 Gauge

Lot 307 to Lot 391 Other 00 Gauge
Lot 392 to Lot 478 Kitbuilt 00 Gauge
Lot 479 to Lot 533 European HO Gauge
Lot 534 to Lot 549 American HO Gauge
Lot 550 to Lot 556 Lone Star 000 and Tri-ang TT and 00 Gauge Catalogues

DAY 2 Wednesday 15th December at 10am

Lot 557 to Lot 589	Railway Collectables
Lot 590 to Lot 604	Railway Book, Prints, Paintings and Photographs
Lot 605 to Lot 607	Toy and Floor Trains
Lot 608 to Lot 630	Mainly Post-War popular Toy Makers
0 Gauge Train Sets	
Lot 631 to Lot 676	Hornby 0 Gauge
Lot 677 to Lot 723	Bassett-Lowke and Exley 0 Gauge
Lot 724 to Lot 771	Fine 0 Gauge
Lot 772 to Lot 788	Modern 0 Gauge
Lot 789 to Lot 857	Other 0 Gauge
Lot 858 to Lot 867	Mike Dean Milbro 0 Gauge Collection
Lot 868 to Lot 871	Other 0 Gauge
Lot 872 to Lot 913	American 0 Gauge
Lot 914 to Lot 944	Vintage Gauge 1
Lot 945 to Lot 955	General Gauge 1
Lot 956 to Lot 970	Modern Gauge 1

The Geoff Clark Collection Lot 971 to Lot 1059

Lot 971 to Lot 982	Bockholt Gauge 1
Lot 983 to Lot 993	Aster Gauge 1
Lot 994 to Lot 1026	J&M Gauge 1 Coaches
Lot 1027 to Lot 1038	Markscheffel & Lennertz Gauge 1
Lot 1039 to Lot 1059	Other Gauge 1
Lot 1160 to Lot 1130	Wide Gauges, Live Steam, Garden Railways and Engineering

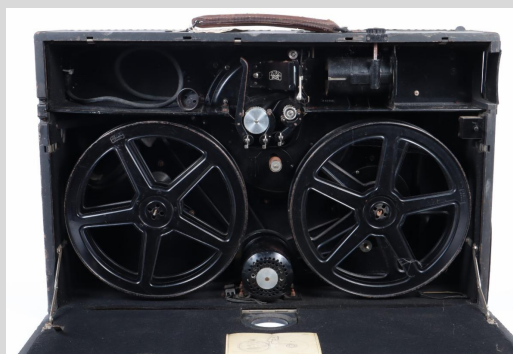
Double day at Dudley to draw the curtain on 2021

Antiques & Collectables

Wednesday 22nd December at 10am

Thursday 23rd December at 10am

West Midlands, Dudley



Lots 1 to 218 are from the collection of Keith Nunn a greatly missed cinema fan and projectionist below are a few lines from his colleague and friend.

"Keith Nunn was first and foremost a loyal lifelong friend to many people, and would do anything for anyone. He started his career in 1954 at the Ritz cinema in Hereford, then - through a small favour to two sisters, became the projectionist and his own boss at a small Forest of Dean cinema for many years, before moving to the ABC Regal in Kings Square, and then on to the MGM in Gloucester where he remained until his retirement. I first met Keith back in the mid 1980's when he was still the chief projectionist at the ABC Regal Gloucester. He kindly offered to show me backstage and gave me a tour of the projection rooms, and our friendship grew from there. Keith had a passion for cinema and film, he loved his work, and he loved collecting anything film related - especially projectors. He amassed many friends within the industry, and they would donate film equipment to him over the years. He attended many auctions and government sales looking for that elusive item and enjoyed getting his hands on industrial and professional kit. His collection grew continuously until his

passing in 2020 - it was both Keith's lifelong hobby and obsession. He is greatly missed."

Baylies Hall Tower St Dudley has its own important cinema history as James Whale director of the 1931 horror film Frankenstein attended school here in Baylies Hall.

Enjoy the auction! We at SAS Dudley are delighted to offer this collection relating to cinema and film.

Day 1 Wednesday 22nd December at 10am

Lot 1 to Lot 252 Cameras, Projectors, Film and Television Related Matter

Day 2 Thursday 23rd December at 10am

Lot 253 to Lot 378 Jewellery

Lot 379 to Lot 521 Objets d'art

Lot 522 to Lot 539 Toys

Lot 540 to Lot 861 Comics

[Catalogue](#)

Special Auction Services | [Website](#)

