

BID VIA SAS LIVE

**LIVE INTERNET BIDDING
WITH SPECIAL AUCTION SERVICES**

**We are delighted to announce that you
can now bid online directly with SAS**



**We have launched our new
SAS Live bidding platform**

Visit: www.specialauctionservices.com for more details



Hugo Marsh
Director



Neil Shuttleworth
Director



Thomas Forrester
Director



Antiques & Fine Art

Tuesday 1st October 2019 at 10.00

Viewing:

Monday 30th September 2019 10:00 - 16:00

9:00 morning of auction

Otherwise by Appointment



Harriet Mustard
Antiques & Fine
Art



Helen Bennett
Antiques &
Fine Art

Saleroom Two
80 Greenham Business Park
NEWBURY RG19 6HW

Telephone: 01635 580595

Fax: 0871 714 6905

Email: mail@specialauctionservices.com

www.specialauctionservices.com



Due to the nature of these items buyers must satisfy themselves on authenticity prior to bidding and returns will not be accepted. Additional images are available on request.

Buyers Premium: 17.5% plus Value Added Tax making a total of 21% of the Hammer Price

SAS Live Premium: 20% plus Value Added Tax making a total of 24% of the Hammer Price

the-saleroom.com Premium: 22.5% plus Value Added Tax making a total of 27% of the Hammer Price

Order of Auction

Metal	1-13
Silver, Silver Plate & Jewellery	14-68
Objets d'Art	69-149
Clocks	150-162
Ceramics	163-257
Glass	258-303
Asian Wares & Art	304-352
Paintings , Drawings & Prints	353-432
Textiles	433-451
Furniture & Rugs	452-507



LOT 10

METAL

1. Three items of 20th Century Sheffield hand hammered pewter, consisting of a jug, height 13 cm, beaker, height 7 cm and a three footed dish, diameter 24 cm (3) £30-50



2. A 19th Century bronze bust of Ajax from the Pasquino Group, cast after the antique, designed to show the face of the warrior looking upwards to dexter, placed on a wooden turned circular stepped base, height 32 cm £250-350

3. A 19th Century bronze vase, the bulbous body with ribbed decoration and a flared rim, height 19 cm £50-100

4. A 19th Century ormolu and cast brass profile bust of Lord Wellington, dressed in uniform, mounted on a rectangular wooden panel with engraved decoration, 27 cm x 24.5 cm £200-300

5. A selection of metal ware, including two 18th Century mortars, a 'Salter Family Scale' no.45 with a circular brass pan, a cast iron fire grate, copper kettles, brass candlestick, Negretti and Zambra of London barometer no.3346 and more (parcel) £60-80

6. A selection of brass and copper ware, including an Arts & Crafts kettle, pair of candlesticks, novelty pot modelled as a fly, a large quantity of cutlery and more (parcel) £30-50

7. A collection of 20th Century metal ware, including an Anchor lantern, two coach lights, a pair of wooden wall brackets, brass lamp stand, a sundial, coat hooks and more (20+) £50-100

8. Three Elkington silver plated dishes, together with a Middle Eastern bowl, the glass encased in metal-work and a pair of small dishes based on the 1981 Hong Kong Two Dollars, diameter of the largest 20 cm (6) £40-60

9. In the manner of Walter Crane (1845-1915) a brass charger, with engraved decoration of exotic birds strolling through water and dense foliage, registration mark for 1880s, Crane authored the Claims of Decorative Arts espousing a utopian vision of decorative arts craftsmanship becoming the equal of fine painting £50-100

10. A pair of late 19th Century Anglo Indian cast brass candlesticks, modelled as elephants with raised trunks, height 18 cm (2) £60-80



11. A Victorian cast iron doorstop, modelled as a winged lion, height 17 cm £40-60

12. A 19th Century Benham and Froud style brass and copper oil lamp converted to telescopic standard lamp, decorated with scroll work and rosettes, four splayed feet, height (extended) 210 cm £30-50



13. A vintage advertising sign 'Ind Coope', for the Ind Coope Brewery, mid 20th Century, alloy metal or aluminium, 62 cm x 34 cm £60-80

SILVER, SILVER PLATE & JEWELLERY

14. A Elizabeth II silver cream jug, hallmarked Birmingham c.1960, potentially by F H Adams and Holmes, a small tankard with an enamel shield with the motto 'per mutua serviendo tutiores', hallmarked Birmingham, and a napkin holder tankard, height 9 cm (3) £40-60



15. Three sterling silver items two produced in Hong Kong, one a large box with calligraphic symbols and fitted wooden interior, and a small pin dish with a ship to one side and portrait roundel to the other, together with a cased set of sterling silver coffee spoons with hardstone hexagonal finials, box length 15.5 cm (3) £50-70

16. A Victorian John Grinsell & Sons silver and cut glass inkwell and stand, London 1896, together with another silver topped and cut glass inkwell by Thomas Johnson, London 1879 and three more ceramic, shell and glass examples (5) £100-150

17. Seven 20th Century silver napkin rings, by various makers, two silver plated cigarette cases and lighters, one by Mosda, a vesta case, spoon, Eversharp propelling pencil, three crochet hooks and more (18) £40-60

18. An Edward VII silver bowl by Charles Boynton and Sons, hallmarked London c.1909, the decoration of repousse manner with figures of domestic life, together with a small pierced dish and inkwell with roundels enclosing neo-classical heads and two Georgian silver spoons by William Fern and William Eaton (4) £100-140

LOT 19



19. A silver and lilac guilloche enamel snuff box, with impressed marks, the oblong top opened by a clasp with minute glistening stones, length 8 cm £150-150

20. A selection of 19th & 20th Century silver and silver plate, including a pair of silver plate cruets in the form of a duck, a manicure set stand, a silver spoon and a quantity of silver plate cutlery (parcel) £50-100



21. A 19th Century Indian white metal ewer, unmarked, of baluster form profusely embossed with flowers and scrolling foliage, shaped handle terminating with the head of a lion, circular fluted base, height 35 cm £200-300

22. A selection of 19th & 20th Century silver coins, including a George IV crown 1822, Victorian shilling 1839 and more (14) £60-80

23. A 19th Century ivory and silver page turner, London 1896, with an animal foot handle, length 28 cm, together with a mid-20th Century Ingersoll Ltd-London 'Triumph' chrome cased open face pocket watch, a silver open face pocket watch with an enamel dial and a carved pipe (4) £80-120



24. A 20th Century Danish silver bowl by Peter Hertz, Copenhagen 1924, in the Art Nouveau style with the inscription 'Landsorganisationen for Let Hesteval', diameter 25 cm, together with a set of six George VI teaspoons by C. Robathan & Son, Birmingham 1937, with blue enamel handles, within a black leather case with a fitted interior (2) £60-100



25. A collection of silver and silver plate, two James Deakin & Sons pill boxes, Chester 1901, (one gilt lined), a silver rimmed moulded glass ashtray, Hukin & Heath, Birmingham 1895, a silver mounted glass bottle, silver page turner, a sterling silver cigarette case and glass bottle with silver plated floral decoration and cap, together with a 9ct gold ring and small selection of costume jewellery (15+) £150-250



26. A pair of George V silver Walker & Hall vases, Sheffield 1929, with fluted rims and mounted on circular wooden bases, height 20 cm, together with a silver plated Walker & Hall dish, diameter 15.5 cm (3) £70-100

27. A collection of silver and silver plate, including a Victorian Deakin & Francis Ltd salt shaker, Birmingham 1888, a Victorian silver box, Birmingham 1899 and one other, two silver shamrock spoons, a gold metal patented Dunhill lighter, five WWII miniature medals, a selection of silver plated bangles and a small quantity of costume jewellery (parcel) £40-60

28. A collection of 20th Century silver and silver plate, including a pair of silver mounted candlestick holders, Birmingham 1965, an Arts & Crafts set of photo frames by Kate Shea, in the original pouch, silver plated cutlery, shakers, shell dish and mustard pot, together with an oriental white metal mirror (parcel) £50-100



29. A hallmarked silver dressing table brush and mirror together with a silver plated Kings pattern cutlery set, Birmingham maker c1928, the flatware set including table spoons, knives, forks, dessert spoons, tea spoons and in a different pattern cake forks (40+) £30-50

30. British Hallmarks' a set of six 1935 Jubilee spoons, made as a learning tool for hallmark identification for Birmingham, Sheffield, Chester, Glasgow, Edinburgh & London, together with an assortment of silver and plated items, including Chinese spoons and tiny stamp holder with a plaque bearing the inscription 'I love you' (15+) £60-100

31. Georgian and Later Silver Sugar Tongs and Tea Spoons, a pair of silver sugar tongs Exeter 1790 maker IH John Harman, three Georgian silver tea spoons, a set of six Walker & Hall silver tea spoons monogrammed 'D', and ten other Edwardian and later silver tea spoons, (12oz), G, (20) £100-120

32. A silver plated two bottle tandalus, with two moulded glass decanters, height 32.5 cm £50-100



33. A quantity of silver plated items and tableware, to include multiple sets of plated cutlery, loose cutlery, large platters, cruet set, goblets, teapot and Royal Worcester boxed dishes (50+) £50-100

34. A large quantity of silver plate, including a vanity set, plated hip flask, plated flatware, ladle, teapot with bone finial and engraved foliage and plated coffee pot with festooned decoration, together with a J Heeney and Sons Weir concertina corkscrew (25+) £50-100

35. A collection of silver plate, including a cased set of knives, five sets of teaspoons, a wine cooler, fruit basket, candlestick and more (parcel) £50-100

36. A set of six white metal lobster forks, each with terminals cast with a lobster, a silver plate fruit bowl, together with four early 20th Century painted plates and two French 19th & 20th Century coloured prints (13) £50-100

37. A small group of silver and silver plated items, including a silver engine turned card case, Birmingham c.1921, another case with silver hook, pencil and U.B Yabsley London pocket watch (5) £40-60

38. A small quantity of silver plate and silver, including a silver toast rack, Sheffield c.1936 by Viners Limited, Emile Viner, together with ornate silver fork, hanging spoon and other items (15+) £40-60

39. A canteen of Solingen Germany silver plated cutlery, containing knives, serving spoons, dessert spoons, tea spoons, forks, a pair of tongs and a cake slice, contained within a wooden fitted case with a brass handle £100-200



40. An early 20th Century silver plated teapot by William Hutton & Sons, of moulded form, height 14 cm, together with an early 20th Century Arts and Crafts beaten tray, rectangular in shape, decorated with scrolls and flowers, length 40 cm, a Rolls Razor shaving kit, c.1927, Gillette razor and a commemorative pen knife and corkscrew (5) £60-80

41. An Arts and Crafts style silver plated bowl, hammered structure with twin handles, unmarked, circumference 30 cm £30-50

42. A 20th Century canteen of silver plated cutlery, six fish knives and forks, in a fitted wooden case with blue silk and velvet interior, together with a quantity of costume jewellery including brooches, rings and bracelets (parcel) £40-60

43. A 20th Century canteen of silver plated cutlery, including knives, forks, tea spoons, soup spoons, fish knives and more, within a fitted wooden case with red felted interior, together with a receipt for some of the cutlery, 59 cm x 36 cm (100+) £50-80

44. An Edward VII style gold half sovereign, dated 1906, VF, possibly a later Middle Eastern restrike, 4g £120-180



45. A selection of 20th Century jewellery and silver, including a 14ct dress ring, pair of silver cufflinks, a silver ball point pen, London 1978, etched 'Taylor' and a selection of necklaces, brooches, silver plate and coins (parcel) £40-60

46. A 1990s Swatch plastic watch, the strap decorated with motorcycle scenes, length 23 cm, in the original packaging with the instructions £30-50



47. A 1960s Italian yellow metal commemorative medallion, 8.9g, marked 750, from the Cassa Di Risparmio Delle Provincie Lombardarde, for the 9th International Congress £200-300

48. A Victorian gold bracelet, having gate style links, not marked, presumed 9ct gold, with a safety chain, 13.4g £150-200

49. A pair of early 20th Century 9ct gold cufflinks, 3.5g, together with a single 9ct gold cufflink, 2.7g (3) £60-100

50. A 1920s Dutch gold 10 Guilen coin, dated 1925, 6.7g, EF £150-250

51. A Victorian half sovereign pendant, the 1899 gold coin in 9ct gold mount on a 9ct gold chain, 6.8g £150-200

52. An Edward VII gold full sovereign, dated 1907, with Melbourne mint mark, VF-EF £220-280

53. An Edward VII gold full sovereign, dated 1909, VF-EF £220-280



54. A pair of cufflinks, with malachite £80-100

55. A pair of cufflinks, of Lapis Lazuli mounted in bronze £60-80



56. An amethyst 925 chain necklace, together with a set of similar earrings £60-80

57. A pair of rope twist cufflinks, 925 marked silver with Lapis Lazuli £70-100

58. Gilt 925 lapis lazuli cufflinks, mounted with princess cut emeralds £180-220

59. Lapis lazuli bracelet, the five stones mounted in 925 silver £40-60

60. A pair of chain link cufflinks, with pieces of jade £60-80



61. A pair of cufflinks, taking the form of revolving globes £60-80

62. An amethyst suite, mounted in 925 silver £60-80

63. A pair of gilt cufflinks, with sapphires £180-220



64. A Middle Eastern 21ct gold necklace, leaf design to links, with s shaped clasp marked 21k, 25.7g £700-1000

65. A 9ct gold necklace, with flattened links, 11g £120-180

66. A 14ct gold ring, modelled as an elongated dolphin, 3.2g £50-80

67. A Middle Eastern yellow metal signet ring, with engraved A to tablet, snapped band, strike marks to side, 4.1g, together with a gold plated necklace and ring and a fashion ring (4) £80-120



68. A 14ct gold torsion bangle, having dolphin terminals, marked 585, 9.4g £150-200

OBJETS D'ART



69. A carved wooden section of the Windsor Castle fireplace, in the form of a motif, (authenticity is unverified), together with a cast iron nutcracker, a K & P Peterson's wooden pipe, selection of gaming counters, silver plated spoons and more (parcel) £80-120

70. An 18th Century carved ivory snuff box, smoothly carved with a hinged lid, length 4.8 cm £50-80

71. A selection of 19th & 20th Century antiques and ephemera, including two Robinson lighters, a Bryant & May's match box, Aitchison opera glasses, a miniature copy of 'Dewdrops' (twenty-third edition), a 20th Century Guilmin 'Metro-Auto-bus' map for Paris and one other, a boxed set of 'A Puzzle Drive' and 'The "Brahma" Puzzle', set of blanket pins, bone counters and more (parcel) £50-100

72. A late 19th Century travelling foot warmer, with a needlework top, and an oak frame, raised upon four bun feet, containing a tin water bottle, length 32.5 cm £40-60

73. A 20th Century gilt walnut carved electrolier, with six scroll arms and candle bulb sockets, height 60 cm £150-250

74. A 19th Century barometer, with central mercury Admiral Fitzroy tube thermometer and atmosphere gauge, mahogany cased, height 98 cm £80-120

75. A pair of 20th Century Regency style circular wall mirrors, with mahogany cases, diameter 42 cm (2) £50-100

76. A collection of antiques and collectables, including a miniature copy of 'The Book of Common Prayer', leather bound with a silver front decorated with cherubs, a silver and mother of pearl pocket knife, two horn napkin rings, an open pocket watch, iron lizard and more (15+) £70-100



77. Seven Walt Disney toys, together with a Huntley & Palmers tin and a brass camel, trio of monkeys, letter rack and character jug (12) £30-50



78. An abalone shell elephant, modelled with its trunk raised, height 14.5 cm, together with a fossilized ammonite, a studio pottery vase and pot and a papier mache box bound in leather with a decorative motif to the lid (5) £40-60

79. A quantity of tin plate advertising boxes, for Sharps Plain Toffee, OXO Cubes (2), Rinstead Pastilles and others, together with a selection of 20th Century embroidered and crocheted fabrics including doilies, placemats and tablecloths and a selection of needles and sewing implements (parcel) £30-50



80. An early 20th Century Indian ivory and sandalwood writing slope, with carved decoration of flowers and scrolling motifs within a micro mosaic border, two purple velvet writing surfaces to the interior, af (hinges broken), 24.5 cm x 28 cm (closed) £80-120

81. A selection of 20th Century collectables, including a Poole dolphin, a wooden model of a race car, a tray to commemorate the wedding of Prince Charles and Lady Diana Spencer (35+) £30-50

82. A Victorian oil lamp, having an etched opalescent glass shade above a clear glass font, supported on a brass pedestal, height 62 cm £50-70

83. A 19th Century Middle-Eastern brass divination bowl, decorated with Arabic script, diameter 21 cm £80-100

84. An African Benin bronze figure, modelled as a woman seated whilst holding a bowl, height 34 cm, together with a Chinese brass bust of Mao Zedong, height 17 cm and another of a seated oriental figure, height 16 cm (3) £50-100



85. A Franz Xaver Bergman cold painted bronze female pheasant, stamped 'B', numbered 5724, af (leg broken), length 47 cm £200-300

86. A Hitachi TRK-W2 stereo cassette recorder, together with a Sanyo cassette recorder and a Rank Radio television, model no.BC6004A (3) £30-50



87. Circle of Claude Michel Clodion (1738-1814) bronze sculpture, Infant Bacchus Riding a Panther with Two Infant Satyrs', on an integrally cast naturalistic base, height 34 cm £500-700

88. A Just Andersen Art Deco bronze circular dish, dotted and striped border, impressed marks to base, diameter 30 cm £30-50

89. A group of four wall lights, comprising a pair of 20th Century Italian white painted metal examples, pierced petal form, height 36 cm; a brass example with scroll branch and glass shade, height 39.5 cm; and a red painted metal example, suspended shade, gilt foliate decoration and borders, height 26 cm (4) £30-50

90. A pietra dura plaque and pearlware chinoiserie plate, the plaque decorated with inlaid specimen stones to form an urn with floral arrangement, the blue and white plate with adult and child in the foreground and rowing boat in the background (2) £40-60

91. A 19th Century mahogany writing slope together with a hardstone obelisk, the slope with a red leather interior and brass plaque, width 30 cm, together with a selection of wooden boxes, one with inlaid metalwork to the lid, assorted sizes, the obelisk with a carved flower on a stepped square base, height 65 cm a/f (7) £50-80

92. A Middle Eastern Jambiya (wahabite), horn handle, double edged, length 24 cm, curved blade with a central spine, with a moulded leather scabbard, together with a lady's parasol with a carved ivory handle and a pair of 'Dainty' opera glasses decorated with mother of pearl panels (3) £40-60



93. Two early 20th Century sword sticks, the handle of one carved as a dog with glass eyes, containing a Metropolitan whistle, length 87 cm, the other with a white metal collar, length 86 cm, both af (2) £80-120

94. A Montblanc Meisterstück ball point pen, silver coloured with a gilt clip and triple band, stamped '925 StOD' and 'MK103036' on the cap band, length 13.5 cm, in a black leather pouch £80-120

95. Two Montblanc Meisterstück fountain pens, black cases with gilt trims and clips, 14ct gold nibs numbered '4810' and stamped '585', the cap bands marked 'DD1545546' & 'EX2507535', length 14 cm, together with a 50ml bottle of Mont Blanc ink (3) £150-250

96. A Sheaffer white metal fountain pen and ball point pen, both with clips and a decorative band, the fountain pen nib stamped 'Sheaffer', length 13 cm, together with a Waterman fountain pen, black with gilt trim and clip, length 14 cm (3) £50-100



97. A selection of 20th Century fountain pens, including a black Parker Junior Duofold fountain pen, with a gilt clip and 14ct gold nib, Parker Victory fountain pen, with a gilt clip and 14ct gold nib, Waterman's Shorthand, with a gilt clip and 14ct gold nib, Onoto fountain pen, the nib marked 'De La Rue Onoto London' and a Burnham no.60 fountain pen, with a red marbled case, gilt clip and 14ct gold nib (5) £50-100



98. A selection of 20th Century compacts and mirrors, metal fabric and enamel examples, some by KIGU & Stratton (9) £30-50

99. A Bayeux medallion group, mounted on a wooden board with tartan fabric behind, an RAF silver 'sweetheart' pin badge, selection of 20th Century European coins in an inlaid wooden box and a print of Arthur Rackham 'Unconquerable' (parcel) £40-60



100. A Victorian silver collared walking stick, Birmingham 1889, with a horn handle, containing a horse measure, length 91 cm, together with another walking stick with a silver plated top, length 86 cm (2) £120-180

101. A selection of chess pieces, including a travelling chess set with bone pieces (incomplete), a set of miniature plastic pieces, four sets of turned wooden chess pieces (three sets incomplete) and a wooden box paint set (parcel) £50-100



102. An Arts & Crafts Pullman type brass table lamp, adjustable, tripod form with hanging hooks and screw fixing feet, height 38 cm, together with a studio pottery vase, a Delft manganese tile and one other, both framed (4) £50-100

103. A collection of antiques and collectables, including a Wedgwood Jasperware bowl and pot, a Parker 61 fountain pen with an arrow motif clip, length 13.5 cm and a Pierre Cardin example, a set of five 'lettuce leaf' dishes, two papier mache boxes, a Coalport dish, studio pottery bowl (stamped to the underside), manicure set, a selection of enamelware, a stone and resin bust and more (25+) £80-120

104. A decorative Korean wooden lidded box, bound with brass straps and handles and a stylised fish lock, length 27 cm, together with a circular needlepoint embroidery dated 1987, diameter 26 cm, a pair of embroidered floral panels, 5.5 cm x 18 cm and a pair of woodblock prints, 5 cm x 7 cm, all framed and glazed (6) £50-100



105. Two cased sets of Edwardian spectacles, a gold coloured metal framed pair, the case marked "Reward if returned to Rayner and Keeler Vere Street", the other pair with a label "care must be taken...otherwise gas may leak in when a respirator is worn" (2) £50-80

106. Four collectable fountain pens, three Parker examples and one Sheaffer (4) £150-200

107. A quantity of late Victorian Indian carved puzzle ball chess pieces, several thought to be highly ornate stained ivory carvings, with depictions of flagged castles atop of elephants, figures swathed in profusely decorated robes and armour, many with weapons (40+) £200-300

108. A gentleman's lot, comprising of three silver plate cigarette cases and one other, including a boxed LINKS example, a set of eight napkin rings and four razors (15) £40-60



109. A picnic hamper for four, with a fitted interior, comprising cutlery, plates, cups, food containers, a flask and jars, within a black carry case £40-60

110. A Shagreen mounted box, early 20th Century, approximately 12 cm x 10 cm x 6 cm £50-100

111. A papier mache tea caddy, with mother of pearl escutcheon, the top decorated with a view of exotic figures and architecture in the Orientalist tradition opening to reveal two compartments £50-100



112. A group of geodes and crystals, to include pyrite 'fools gold' and a shell with carved decoration of an ancient classical chariot scene, all typical items favoured on European grand tours for the collectors cabinet (14) £60-100

113. An attractive heavy metal blind stamp printing device, together with a brass stamp holder of ornate rococo form, a papier mache box with floral decoration and a Houses of Parliament London heavy desk ornament, together with a box depicting a ship at sea, small metalwork birds and assorted old coins including Cumberland Education Committee commemorative examples and a plastic match box holder with mythical sea creature holding a faux pearl (20+) £70-100

114. An Indian gouache with attendants transporting important personages, together with a carved Indian box decorated with elephants, gouache framed and glazed internally 42 cm x 12 cm, length of box 29 cm (2) £50-100

115. A quantity of old coins and enamel badges, the badges to include 'Clacton Sea Angling Club', 'Essex Police', 'National Savings' and 'The Royal British Legion', together with a sterling silver and enamel pill pot, banking bags and old money tin (50+) £50-100



116. A treen collectors cupboard together with a quantity of assorted collectables, including early 20th Century packaging advertising groceries such as 'Colmans', 'Bovril' and 'Masons OK sauce', and a concealed corkscrew taking the form of a sailor sat upon a barrel, a ships wheel ashtray, and small antique souvenir plaque with painting on glass (25+) £70-100

117. A Ewbank 'Success' carpet cleaner, together with two wooden plane tools, two stoneware vessels and a brass shovel in a vintage case (7) £30-50

118. A 20th Century parasol, with a carved wooden handle, embellished with metal plates, one bearing the words 'Shipman Shamrock Lodge Bmouth', length 91 cm, a silver topped walking cane, length 89 cm and two walking sticks with silver collars, length 90 cm (4) £30-50



119. A treen Russian Matryoshka type doll depicting British politicians, including Tony Blair, John Major, Margaret Thatcher, Winston Churchill, together with three collectable fountain pens, including a Waterman and Omnirod example (4) £50-80

120. A canteen of silver plated cutlery with hallmarked silver mounts, together with some ephemera relating to Disneyland and Las Vegas, a scarf and a packet of Racey Helps playing cards (12+) £40-60



121. A pair of 19th Century green snuff box shoes, together with two silver plated metal owls, length of shoes 8 cm (4) £70-100



122. A 20th Century retro table lamp, with textured corrugated effect orange shades with gold trimming, positioned at different heights mounted on a teak oval base, height 45.5 cm x width 30 cm £50-80

123. A marble mortar and pestle, with wooden handle, a school bell, an iron meat press and a stoneware bottle, height 24.5 cm (2) £60-100

124. A collection of antiques and collectables, consisting of a tinplate Salter scale, an open pocket watch, a selection of slides with letters and words cut into them, a Mantana Calf hip flask, two sets of weights, two bottle openers, a set of commemorative coins and a wooden cased level (parcel) £50-100



125. Philip's Challenge Globe, a 1960s terrestrial globe 13.5" in diameter on polished wooden plinth, G £60-80

126. Herbert Terry Vintage Angle-poise Lamp, a 1960s black painted angle poise lamp mounted on heavy cast brass plinth, stamped Herbert Terry, working at time of cataloguing, F-G £50-80

127. Vintage Laboratory Magnifying Lamp and Telephone, a 1960s M5 magnifying lamp with plastic shade on adjustable metal stand by PW Allen & Co also with British Army broad arrow mark to rear, working at time of cataloguing, together with a two tone grey plastic push button telephone marked on underside P.O. Authorised Release 22215 756 GNA 81/7, G, (2) £50-80



128. 1960s Bush and EKCO Radios, a Bush Type TR 82C portable radio in plastic case with carry handle, together with an EKCO model U354 radio in red plastic case, F-G, (2) £40-60

129. Vintage Angle Poise Lamp, a white painted angle poise lamp with rectangular weighted base (working at time of cataloguing), G £40-60

130. Table Top Revolving Bookcase and Other Ornaments and Miniatures, a carved oak 1930s table top revolving bookcase 11" high, together with a leather model of a stallion 11" high, a faux marble bust of Herakles after Santini 14" high, a pair of oval miniature gouache continental landscapes signed in glazed Rococo style gilt cartouche frames and a miniature engraved portrait of an 18th Century lady probably after Gainsborough in ebonised frame, G, (6) £50-80

131. A 20th Century mahogany wheel barometer, the shaped case containing a white dial with black and red text, with a fitted thermometer above, an original paper label bearing the instructions to the back, height 93 cm £50-100



132. A 19th Century leopard skin rug, of taxidermy interest, with full head and glass eyes, and open mouth, provenance: acquired by the vendor's grandfather in Ceylon in the 1950s, approximate length 230 cm £200-300



133. An early 20th Century elephant's foot in the form of an occasional table, with a stepped shield shaped oak base and a circular oak drop in top, height 59 cm £200-300



134. A bottle of Duval Leroy France Champagne c.1952, with original contents and seal fully intact, perhaps purchased in advance of the Coronation, height 33 cm with void approximately 3 cm from base £50-100



135. A bottle of Chambertin Marcilly France wine, with original contents and capsule intact, height 30cm with void approximately 3cm from base £50-100

136. An unopened box of Davidoff cigars with seal intact, together with an oriental box opening to reveal ten more graduated Havana 'Habana' cigars (2) £100-150

137. A Dunhill gold nibbed fountain pen and Dunhill clutch bag, together with a small quantity of collectable lighters including a Ronson example and 3910th squadron piece, a book on Alfred Dunhill 'One Hundred Years and More' published in 1992, a razor and some dominos (15+) £100-150

138. A selection of 20th & 21st Century books, including a copy of 'Drawings of Michaelangelo' published by London George Newnes Limited, 'Nature and Her Servants' by Theodore Wood, 'More Than Shadows, A Biography of W. Russell Flint', by Arnold Palmer, published by The Studio, 1943, together with others (20+) £40-60

139. A large quantity of 20th & 21st Century auction catalogues, including Christies, Sothebys, Bonhams and others for classical and contemporary art, interiors, fine art and antiques and more (220+) £70-100

140. A copy of 'Othello' by 'William Shakespeare', Edited by M. R. Ridley, published by J. M. Dent & Sons Ltd 1947, written on the inside cover are the words 'Two Austrian Girls Would Like To See You, Please, Orson Welles!' together with the signature of Orson Welles and others £80-120



141. A MAN RAY Hanover Gallery London exhibition catalogue c.1969, with a polished aluminum binding, the yellow bordered pages include three pages of text by Man Ray, two pages describing paintings and sculptures (23 items) and has 17 illustrations (of which 7 are in colour). Bound in the original aluminium red silk-screened (metal ring-bound) covers, 16.5cm x 20cm, together with a later catalogue (2) £100-200

142. Harpers Magazines' over five bound volumes, c1883, c1885, c1887, c1888, including interesting commentary on modern French sculpture, socialism in London, modern Spanish painting, precious stone in the United States, Limoges and its industries (5) £30-50

143. Five volumes of H. Essenhugh Corke & G. Clarke Nuttall 'Wild Flowers as they Grow', published by Cassell and Company, 1912, coloured plates throughout, bound in green cloth (5) £30-40

144. A reproduction advertising sign for 'The Punch and Judy Show', on a wooden oval panel, painted with a figure of punch holding a crocodile, the dates and prices beneath him, height 92 cm £50-100

145. An Edwardian walnut box, rectangular in shape with inlaid decoration on the lid and around the keyhole, 25 cm x 9.5 cm x 14.5 cm £40-60

146. A wooden twin handled chest, with a hinged lid, painted blue, 67 cm x 29 cm x 41 cm £30-50



147. Several items of treen including a 19th Century Superfine Watercolours boxed set retailed on Regent Street, with various internal compartments and ceramic mixer and brush washer, together with a 19th Century writing slope with leather interior and tea caddy of similar age (4) £100-150



148. A Collector's Cabinet with butterflies and moths under glass, together with a specimen box and wooden press for printing a floral pattern, cabinet height 43 cm (3) £80-120

149. A 20th Century oak tea caddy, on raised feet with a metal handle, height 15cm, together with a brass chestnut pan, length 51 cm (2) £30-50

CLOCKS

150. A Victorian 17th Century style brass lantern clock, the circular dial engraved with motifs and with Roman numerals and pierced hands, the case with engraved pierced crests, height 27 cm £40-60



154. An Edwardian silver plated Rococo style mantel clock, white enamel and moulded silver plated dial with Roman numerals, the ornately cast case having pierced fretwork, lions and scrolling embellishments, with urn finials, the front bearing a plaque bearing the words 'Presented to Bro. W. Vomles P.G.' dated 'February 18th 1908', Japy Freres movement no.1240, height 56 cm £100-200

155. A 19th Century French spelter figural clock, designed as a man standing upon a wave, holding a jug of water in one hand and the clock in the other, indistinct signature to the base, placed upon a circular wooden base with a plaque bearing the words 'Le Torrent Par A. Moreau', the spherical dial with Roman numerals, height 63 cm £100-200

156. Two timepieces or 'carriage clocks', both with brass cases and glazed sides, one with Roman numerals the other with ornate Arabic numerals, the tallest example 16 cm £120-180

157. A William IV mahogany barometer, together with a French carriage timepiece or 'carriage clock' with brass dial and Roman numerals, barometer length 50 cm (2) £80-100

158. An Early 20th Century carriage clock, white enamel dial with Roman numerals, a brass case with handle and an exhibition case back, height (excluding handle) 13 cm £50-70

159. 1950s Regulator Master Clock, oak case with glazed door electric master clock, complete with silvered dial, pendulum and other accessories, no maker's name apparent, G £60-80

160. 1970s Boxed Smiths Electric Dial Clock, a 1975 Smiths 'Sectric' wall clock in glazed green plastic case with silvered dial 12" in diameter, stamped on reverse Braidwood Developments Ltd with British Army broad arrow 1976, in original card box appears unused, with original mains fittings, G-E £50-80

161. Vintage Smiths Electric Dial Clocks, two wall clocks 1960s and later including one with glazed metal case and silvered dial 11" in diameter and a Smith's Astral glazed in white plastic case 14" in diameter, G, (2) £50-80



162. Art Deco and Later Desk and Travel Clocks, a group of nine including a Bakelite cased electric Smiths example, walnut cased battery model by Kienzle, 1950s plastic cased Japanese Rhythm travel clock and Metamec electric example, boxed Slava 1972 USSR travel clock and West German Blessing example, a brass cased Kienzle 1970s international chronoquartz, desk clock, Swiza 8 travel clock and another by Marche, (many working), F-G, (9) £50-80

CERAMICS

163. David Sharp (1932-) for Rye Pottery frog, in the form of a money box with stopper present, attractive sporadic glaze and signature to base, length 20 cm £30-50



164. Three pieces of Poole Pottery, two in the volcanic living glaze collection resembling lava over cold stones, the smaller example a piece of Delphis ware, largest piece height 24 cm (3) £40-60

165. A large Delft charger manufactured by Boch Belgium, in blue and white glaze, decorated with a couple riding in a horse drawn cart, diameter 39 cm £30-50

166. An early 19th Century Wedgwood salt glaze coffee pot, the body with relief moulded impressions of Satyrs heads and acanthus type decorations, the upper section containing the original fittings for drainage, height 19 cm £60-80

167. Keith Murray (1892-1981) for Wedgwood set of six beakers, in the 'Moonstone' glaze range, the cream earthenware body with lustrous silver banded decoration to the lower section, in the understated Art Deco style typical of Murray who was inspired by the 1925 Paris Exposition. The base has the 'KM' stamp (6) £100-150

168. Four Royal Worcester coffee cups and saucers, C1912 based on base markings, naturalistic handles, pink ground, height 5 cm (4) £60-80

169. A collection of cabinet cups and saucers, all highly decorated, attractive examples to include a hand painted Dresden cup of multi lobed form, a Royal Worcester 'Blind Earl' Earl of Coventry cup and saucer with naturalistic handle and raised decoration, and examples by Aynsley, Masons, Hammersley and Paragon (40+) £100-150



170. A 19th Century 'Admiral Nelson & Captain Hardy' commemorative Prattware jug, each side moulded and titled with a profile of the figure beneath, height 16 cm £80-120

171. A Lawleys part tea service, consisting of eleven plates, one serving platter, nine cups, ten saucers, a sugar bowl and a cream jug, all with flowers and fruit around the rim, together with six Spode cups, saucers and a cream jug in the 'Camilla' pattern alongside a selection of glassware and ceramics (50+) £50-100

172. A pair of 20th Century Royal Crown Derby twin handled lidded vases, decorated with flowers, fruit and gilt decoration, height 26 cm, together with two 1920s Derby Sampson and Handcock hand painted plates decorated with flowers, one signed 'W.E. Mosley', together with another cabinet plate, diameters 22 cm (5) £80-120

173. A group of seven 19th Century Staffordshire figures, including one of Nelson dying beside two Naval Officers, height 20 cm, together with two pairs of couples and four other figures (7) £80-120



174. A selection of contemporary and studio pottery parrots, with green glaze, all unsigned, together with a white owl, height 10-40 cm £50-100

175. A pair of late 19th Century Royal Crown Derby Imari style vases, of globular form with a fluted rim, decorated with flowers, height 18 cm (2) £120-180

176. A selection of 20th Century commemorative ware, including beakers from the coronation of George V, together with crested miniature jugs, teapots and cups (11) £30-50

177. A pair of 19th Century Staffordshire figures, the woman holding a basket and the man holding game, height 19 cm (2) £40-60



178. An Aynsley coffee set of six cups and saucers, with blue and gilt borders above arched floral decoration, the cups with pierced silver frames by Charles Westwood & Sons, Birmingham 1909, contained within a wooden leather effect case with gilt lettering stamped 'John Bagshaw & Sons, Liverpool' with watered silk interior £80-120



179. Four items of Jasperware, comprising a planter and bowl, height 19.5 cm & 9.5 cm, a Wedgwood liquor bottle, height 16 cm and an Adams Tunstall pot, height 8.5 cm, all decorated with cherubs and classical imagery (4) £70-100



180. A pair of Italian Majolica Siena Urbino flasks, each moulded with figural heads as handles and frontal scrolls, either side painted with a cartouche and mythological creatures upon a blue ground, af. missing finials, height 24 cm (2) £50-100

181. A Dutch 19th Century figure of an artist, standing beside her easel with a paint brush and palette in her hand, potentially by Meissen and in the style of Augustus rex, marks to the base, height 25 cm £30-50

182. A selection of 20th Century blue and white glazed ceramics, including an Australian gravy boat and stand, Royal Doulton commemorative plate for 'H.M.S.-Lion' and two other plates by Liberty Blue and Royal Cauldron, three ginger jars, a cup and saucer, a Mason's vase, two other vases and a Chinese pot and cover, marks to the base, together with an Imari vase with fluted rim, height 22.5 cm (14) £60-100

183. A Moorcroft vase of waist-ed baluster form, decorated in the 'Honeysuckle' pattern with tube lined flowers against a pink and blue ground, painted mark, height 14 cm, together with a pin tray decorated in the 'Cyclamen' pattern after 'Emma Bossons', impressed and painted marks and signature to the base, diameter 12 cm (2) £70-90

184. A David Lloyd Jones (1928 -1994) stoneware studio pottery vase, Lloyd Jones was a member of the Craftsman Potters Association, im-pressed with the artist's seal, height 24 cm £30-50

185. A 19th Century Canney Hill pottery treacle glaze model of a cat, Bishop Auckland c.1870, seated on its haunches upon an oval plinth, deco-rated with a brown glaze, height 29 cm £100-200

186. A stoneware studio pottery planter in the style of Wally Cole, together with two Wally Cole for Rye Pottery dishes c1957, consisting a white scalloped bowl, and a blue bowl with floral decoration, the larg-est bowl having a diameter of 42 cm, the planter a length of 60 cm (3) £60-100



187. A David Sharp Rye ceramic plaque, the tile painted with a scene of children playing within a city, un-signed, framed, 33 cm x 33 cm £50-100



188. A Cunard Line ceramic cube coffee set, made by George Clews & Co Ltd Tunstall, circa 1935, consisting of a coffee jug (missing lid), two jugs and a cup, all with a brown glaze and makers marks to the bases (4) £30-50

189. A 1970's Tremaen studio pottery lamp base, designed by Peter Ellery Newlyn Cornwall, modelled as a couple in bed, with a white shade, marked to the base, height (excluding shade) 18 cm £60-100

190. Three Lladro figures of Japanese geisha girls, consisting of no.4840 'Girl Arranging Flowers', height 19 cm, no.1450 'Kiyoko', height 18 cm and no.6151 'Bearing Flowers', height 18.5 cm (3) £100-200

191. A pair of 20th Century Sitzendorf porcelain figures, depicting a dandy and a woman, each on circular bases with sheep beside them, height 19 cm & 22 cm (2) £60-100

192. Two pairs of 20th Century Sitzendorf porcelain figures, one pair depicting a couple gardening, height 11 cm & 11.5 cm, the other pair of a dandy and a woman, each on circular bases with sheep beside them, height 16 cm & 18 cm (4) £60-100

193. A pair of Imari style dining platters, decorated with flowers, stars and scrolls, length 54 cm, four Hornsea Fauna vases, a Beswick deer, goat and penguin and a selection of ceramic and glass animals (16) £40-60



194. An early 20th Century Royal Doulton Titianian glazed ceramic vase, decorated by F. Henri, decorated with a swan and cygnet, signed 'F. Henri' (lower right), printed back stamp and titled 'Titianian', height 14.5 cm £200-300

195. A collection of T.G. Green & Co blue Cornish tea wares, consisting of three cups, two saucers, six jugs, two mugs, flour, sugar & salt shakers, a salt, pepper & mustard pot set, one plate, two platters and a bowl (20+) £80-120

196. A CH Brannam vase of a stylised fish, Brannam of Barnstaple mark to the base, together with a Henriot Quimper French faience plate, the centre decorated with a gentleman supporting himself on a stick, (2) £40-60

197. A Royal Crown Derby coffee can and saucer, the cup mounted in hallmarked silver for London, thought to be c1932, height 5.5 cm £50-70



198. A Moorcroft pottery double gourd vase, c1999 yet reminiscent of earlier Florian wares with highly stylised flowers, characteristic tube lined decoration £120-180

199. A Moorcroft pottery tall jug, produced for the Moorcroft Collectors club c.1997 in the Iris pattern £60-100

200. Three examples of Moorcroft pottery, a covered pot c.2002 designed by Anji Davenport, cup and saucer c.2001, and ginger jar, all with characteristic tube lined decoration, tallest 11.5 cm £100-200

201. A Kevin Frances toby jug depicting James Macintyre, of Moorcroft Macintyre, the founding years of the Moorcroft pottery where James Macintyre recognised talent in William Moorcroft and quickly promoted him to chief designer, Peggy Davies ceramics, limited edition 65 of 500 worldwide £60-100



202. A Dresden continental porcelain functional desk tidy of ornate octagonal form, containing inkwells and stamp holders, with pink borders, gilt highlighting, hand painted flowers, diameter approximately 20 cm £70-100

203. A group of Royal Doulton figures, including HN3365 Patricia, HN2264 Elegance, HN2791 Elaine, HN2389 Angela and HN2373 Joanne, together with a Coalport example and Regal House collection figure (7) £50-80

204. A Royal Doulton figure of Royal commemorative interest, Queen Victoria HN3125 with certificate of authenticity, together with a Royal Worcester example in celebration of Queen Elizabeth's 80th year and two Royal Doulton ladies of the seasons H5323 Autumn and H5314 Winter, (4) £30-50



205. A pair of Royal Doulton relief moulded spittoons of Victorian industry interest, they appear to have been commissioned specifically for Claudius Ash & Sons Limited London a dental equipment manufacturer who exhibited their mineral teeth at the 1851 Great Exhibition, height 24.5 cm £80-100

206. Attributed to Charles Noke (1858-1941) for Royal Doulton whisky flask, 'The Piper Major', for Dewars, similar examples in Literature: King'sware pg 289-300 Lyle Price Guide Doulton, Tony Curtis £70-100

207. A pair of Royal Doulton Toby Ale Jugs, produced in 1934 for Charrington Ales as a point of advertising within the public house, height 23.5 cm (2) £50-100

208. The Cream ground Royal Doulton Toby jugs of WW2 home interest, these pieces left the factory without colouring, due to wartime production restrictions on decoration, this is denoted by the letter 'A' incorporated into the back stamp: the home market restricted to plain wares, height (largest) 16 cm £50-100

209. Miniature Toby jug of Sam Weller, also thought to have been produced by Royal Doulton during wartime with the addition of the 'A' to the printed back stamp, the coloured example implies it was produced for the export market, height 10 cm £80-120



210. Royal Doulton HN3297 figure, 'Milestone', a limited production issued in 1990, height 18.5 cm £40-60

211. Royal Doulton natural foliage jardinière, autumnal colours and impressed leaf markings underglaze, incised mark for maker 'E W', height 19 cm, together with a miniature Doulton Lambeth natural foliage vase of darker colouring height 13 cm (2) £40-60

LOT 219



212. Two Royal Doulton barrels, one a biscuit barrel with transfer printed decoration and gilt sponge type work 'Adelaide', the other a royal Doulton tobacco barrel with raised decoration, (tallest) height 24 cm (2) £50-100

213. A large Doulton Slaters Patent vase, the patent was for the effect created by the application and removal of lace against the ceramic body, together with another transfer printed example, (tallest) height 32 cm (2) £50-100

214. A Doulton Lambeth faience ware vase of bulbous form decorated with yellow flowers, bearing the painted initials 'E M' together with an Art Nouveau vase with highly stylised raised decoration, height 21 cm (2) £50-100



215. A Royal Doulton Art Nouveau jardinière, the exterior with stylised organic imagery in relief on a blue glazed ground, incised artists initials to base, height 14 cm £70-100

216. A small quantity of Doulton, including a Hunting series harvest ware miniature hallmarked silver colored teapot, a similar twin handled sugar bowl, larger twin handled Slater's Patent vessel and two miniature relief moulded vases, (tallest) height 11 cm £40-60



217. A small quantity of Doulton including two ash trays commissioned c1907 for 'Phyllis' with Art Nouveau motifs, together with a match striker with raised leaf border and taller vase with stylised raised decoration to the neck attributed to Maud Bowden, height 18 cm £40-60

218. Four pieces of Doulton Lambeth ceramics, consisting of a matching pair of Slater's Patent vases, the patent was for the effect created by the application and removal of lace against the ceramic body, together with a silicon ware candlestick and highly decorated jug bearing initials for 'M H', (tallest) height 17 cm (4) £50-70

219. Mark V Marshall Doulton Lambeth designer (1879 -1912) tyg, with brilliant raised decoration of flowers in different stages of growth, Marshall is one of the most highly acclaimed designers in the history of Doulton, for similar examples of his work in Literature: pg 379-382 Lyle Price Guide Doulton, Tony Curtis, height 15 cm £150-250



220. A Royal Doulton stoneware soap dish or bibelot, its subject a polar bear by the water's edge, the dish with alustrous glaze, impressed marks to base, height 12.5 cm, for Doulton bibelots in Literature: pg 406-407 Lyle Price Guide Doulton, Tony Curtis £200-300

221. Of Doulton and Royal Doulton ceramic art history interest, a group of reference books on the subject, including Lyle Price Guide Doulton, Tony Curtis, Toby and Character Jugs of the 20th Century and their makers, Fastenau & Mullins and over five volumes Royal Doulton Series Ware Louise Irvine (8) £40-60



222. A heavy rectangular shaped vase bearing the signature of Troika St Ives to base, together with initials 'MD', the form rough textured, impressed and incised, but glazed, height 45 cm £50-100



223. Wallendorf porcelain factory Thuringia Germany, seven figures of mischievous bisque putti playing with unruly blanc de chine sheep and goats with gilt hooves, one putti even having boxing gloves on ready to come to blows, (tallest) height 20 cm (7) £70-100

224. A small quantity of Lladro and Nao figures, including three boxes of putti heads, a Wallendorf figure of a ballerina, and Spode blanc de chine figure of a boy, (7) £40-60

225. A Winstanley ceramic tabby cat, with orange glass eyes, painted signature to the underside, height 22 cm £50-100



226. An Anita Harris ceramic Yorkshire Terrier, with a polychrome glaze, signature to the underside, height 16 cm £50-100

227. A selection of British 19th & 20th Century pottery, five Pekin plates, eight Chinoiserie plates, two tureens and a Chinese Canton famille rose export dish with polychrome glaze, diameter 15 cm (16) £40-60

228. A collection of British commemorative ware, including mugs, glasses, plant holders, plates, dishes and more, together with a Jasperware jug and heart shaped dish (30) £30-50

229. A selection of 20th Century Wedgwood Jasperware, in blue, white and black, consisting of a 1973 'Tower of London' mug, 1976 'Hampton Court' Christmas mug, 1971 'Piccadilly Circus' mug, 1973 'Tower of London' Christmas Mug, 1976 'XXI Olympiad Montreal' mug, 1976 'American Bicentennial of Independence' two handled mug, 1972 'Saint Paul's Cathedral' Christmas mug, 1977 'Westminster Abbey' Christmas mug and a 1974 'Houses of Parliament' Christmas mug, all in the original boxes, some with the receipts, together with an unboxed 1973 'Royal Canadian Mounted Police' mug (9) £80-120

230. A selection of 20th Century Coalport, consisting of a 1978 Limited Edition '75 Years of Powered Flight' tankard no.51/1000, 'The Welsh Scene' mug, 'The London Scene' mug and 'The Scottish Scene' mug (4) £30-50



231. A collection of 20th Century Wedgwood Queensware, consisting of a 1979 Limited Edition 'The Alphabet Mug' no.29/200, 1981 'Royal Wedding Collection' black basalt tankard no.2169/2500, 1978 'Sir Humphry Davy' mug, 1977 'Father's Mug', 1977 'Silver Jubilee' mug, 1972 'Royal Silver Wedding' mug, 1976 'American Bicentennial of Independence' mug no.553/5000, 1973 'Princess Anne's Wedding' mug and a 1978 'The 25th Anniversary of the Coronation' mug, all in the original boxes and some with the certificates, together with an unboxed Wedgwood 1969 mug 'To Commemorate the Investiture of H.R.H. The Prince of Wales at Caernarvon', 1973 'One Thousand Years of our English Monarchy' mug and a 1976 plate 'To Commemorate the XXI Olympiad' (12) £120-180

232. A set of six 20th Century Wood & Sons serving platters, in the 'Yuan' pattern no.656368 designed by Fredrick Rhead, decorated with blue and white transfer printed birds and foliage with Chinese influence, graduating sizes, (largest) diameter 47.5 cm, together with two Portmeirion plates designed by Sophie Conran, in the original boxes and a glass baking tray (9) £50-100



233. An Atkins Patent safety water filter, the stoneware vessel with relief moulded decoration, the lid a/f, height approximately 70 cm, together with a large ceramic 'pure butter' stand from 'The International Tea Co's Stores' (2) £50-70

234. A box of mostly continental porcelain including a rococo style dressing table set with pots of shell shaped form, Victorian blanc de chine study of a bird of prey, a pair of candlesticks in the form of putti, Berlin ceramic egg holders (12+) £50-70

235. A Tuscan china part tea set depicting exotic birds together with other ceramics, mostly British and continental including modern Wedgwood and Royal Worcester (30+) £50-80

236. An attractive hand painted bowl with swags of flowers and paper label bearing the caption "from the Fry collection of Bristol china", from its inception in 1765 the Bristol china company made porcelain from Cornish raw materials, together with a Doccia of Italy lidded twin handled bowl, with four campania style urn shaped footed vases with hand painted floral decoration and Berlin scroll footed pepper pot (7) £80-120

237. A box of mostly British continental ceramics, to include a pair of Staffordshire greyhounds, Staffordshire shepherd and shepherdess, Hammersley china cup and saucer, blanc de chine putti rowing a boat and others (20+) £50-100

238. A box of china including 'tea for one' retailed by Harrods Knightsbridge in a rose pattern, with some Royal Stafford wares, Limoges three footed pot and china tea wares with similar magenta and cerise borders and a Copeland deep dish, tremble-use style cup and saucer (20+) £70-100

239. A collection of crested china wares, to include a cat for Llandudno, throne for Clacton on Sea and iron for Criggieth (30+) £40-60

240. A Crested china Carillon Tower for Loughborough, by Willow China, together with a City of London Tower Bridge, height of tower 16 cm (2) £40-60

241. A quantity of ceramic table wares to include Portmeirion Botanic Garden by Susan Williams Ellis, together with Worcester Evesham, Carlton Ware, Plant Tuscan china, Ironstone serpent handled jug, Poole pottery dolphin, green art deco glass and others (25+) £30-50



242. A Royal Worcester part coffee set in the Hathaway Rose pattern, together with another part set of tea wares in the Rondeley pattern from Royal Doulton, also with a modern Wedgwood clock (25+) £30-50

243. A Royal Albert Brigadoon pattern part dinner service including twin handled soup bowls, together with another part dinner service produced by Royal Albert in the Haworth pattern (20+) £40-60



244. A blue and white antique meat plate of sizeable proportions, decorated in the willow pattern, together with a quantity of Copeland Spode Italian pieces, a blue Jasperware type biscuit barrel, Goebel Hummel figure and some commemoratives (30+) £70-100

245. A Royal Crown Derby part coffee set, consisting of four coffee cans and six saucers, together with several pieces of continental china, Art Deco Sylvac vases, miniature bisque child and a dog, possibly Pirkenhammer (25+) £70-100

246. A Crown Ducal bowl with tube lined decoration in the manner of Charlotte Rhead, together with a large Poole pottery hors d'oeuvres dish, with stylised depictions of shrimp and fish, and Carter Stabler Adams Poole vase with bluebirds, two other Poole examples, and a Honiton jug (6) £80-120

247. A pair of D & Co Limoges jugs with gilt decoration of flowers and dragonflies, height 19 cm, together with a pair of opaline glass vases of oblong form on gilt bun feet painted with floral sprigs, height 21 cm and a pair of cut glass candlesticks with geometric designs height 26 cm (6) £60-100

248. A Royal Worcester botanical part coffee service consisting of fourteen cups, fifteen saucers, a cream jug, and a sugar bowl, each decorated with a variety of flowers and gilt rims, together with another item of Worcester (30+) £60-100

249. A pair of contemporary Moorcroft ceramic lamp bases, of shouldered form decorated in the Lamia pattern on turned wooden stands, together with two cream shades, height 24 cm (to top of base) (4) £80-120



250. Two Royal Worcester cabinet plates, with shaped gilt borders and hand painted with fruit, one signed 'H. Ayrton', the other 'P. Love', diameter 27 cm (2) £50-100

251. A porcelain tea caddy with crossed swords each side with applied encrusted floral decoration, likely Meissen or Dresden, together with a freestanding mirror with porcelain putti surround, a Dresden plate with cartouches of flowers on a black ground and figures in a rural idyll and another Dresden dish of pierced form with swags of flowers a/f (4) £50-70

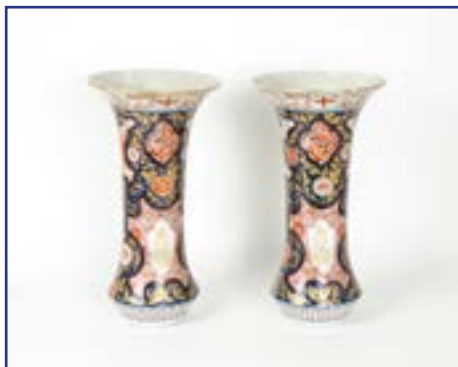
252. A selection of British ceramics, including Royal Crown Derby dishes, a Royal Worcester cup, Wedgwood 'Dancing Hours 2' plaque, Doulton vase, Mintons vase, Paragon cup and saucer and more (13) £100-200



253. A blue and white English 18th Century tin glazed earthenware 'delftware' charger, with decoration of waterside buildings in the Chinoiserie taste, diameter 34.5 cm £100-150

254. Royal Doulton Counterpoint Design Tea and Dinner Service, a floral decorated service including teapot, milk jug, sugar basins, meat plate, two lidded tureens, dinner plates, side plates, bowls and tea and coffee cups and saucers, F-G, (90 pieces) in two boxes £50-80

255. Noritake Sonata Design Tea and Dinner Ware, floral design table ware including, dinner plates, bowls, side plates, serving bowls and tea cups with saucers, G, (40+ pieces) in two boxes £40-60



256. 19th Century Large Imari Vases, a pair of flared vases each decorated with flowers, birds and Shisha 33 cm high, one with hair line crack to top, otherwise good, F-G, (2) £200-300



257. A 19th Century Wedgwood Thomas Harwood & Sons Sphinx majolica bowl, with Egyptian revival silver plated mounts, two handles are joined to the rim and surmounted by sphinxes, the silver plate feet decorated with ram's heads, diameter (including handles) 34 cm, together with a polychrome glazed ginger jar decorated with flowers, height 19 cm (2) £100-150

GLASS

258. A quantity of crystal glasses and decanters, varying shapes and sizes, decanters height 25 cm (30+) £40-60

259. A group of colourful 20th Century glasswares, to include a Murano glass clown, swan, fish and vase (6) £30-50



260. An 18th Century drinking glass with air twist stem, the upper section incised "R W" and "P I", rough pontil to base, height 16 cm £60-100

261. A 19th Century Dutch glass beaker, engraved with three panels depicting architecture and figures, height 12 cm £50-100

262. A Swarovski crystal Siku polar bear in original box, complete with child and rock shaped like an iceberg and certificate of authenticity, made for the Swarovski Crystal Society, Designer Anton Hirzinger, length 17 cm £80-120



263. A Swarovski crystal Endangered Panda pair in original box, complete with certificate of authenticity made for the Swarovski Crystal Society, Designer Heinz Tabertshofer, height of largest 9.5 cm £80-120



264. A Swarovski crystal Endangered gorillas pair in original box, complete with certificate of authenticity made for the Swarovski Crystal Society, Designer Anton Hirzinger, height of largest 10 cm £80-120

265. A Swarovski crystal Endangered tiger in original box, complete with certificate of authenticity, made for the Swarovski Crystal Society, Designer Elizabeth Adamer, length 19 cm £80-120



266. A Swarovski crystal camel in original box, together with a Swarovski crystal giraffe in original box (2) £70-100

267. A Swarovski crystal cat in original box, together with a Swarovski crystal heron in original box (2) £70-100

268. A Swarovski crystal Winnie the Pooh in original box, together with a Swarovski crystal Hedgehog in original box, Winnie the Pooh with a certificate, height 12 cm (2) £70-100

269. Swarovski Crystal Society boxed pair of polar bears, with certificate of authenticity, the largest bear length 7 cm, together with a Swarovski crystal bull, also boxed (2) £70-100

270. A pair of scalloped amber glass Art Deco lights, on plated wall mounts, width 27 cm, together with an Edwardian metal framed lantern, of square form and inset with frosted glass panels each cut to depict sailing vessels, height 18 cm (3) £50-100

271. A 20th Century Art Deco style malachite green glass jar designed as a tortoise, possibly by Czech Ingrid, length 21 cm, together with a vase, ash tray and square pot all decorated with figures (4) £100-150

272. Two Swarovski annual edition cut glass crystal figures, including 'The Dragon' 1997 from Fabulous Creatures and 'Isadora' 2002 from Magic of the Dance, in original boxes with certificates and outer sleeves (2) £60-80



273. Swarovski cut glass crystal animals, including 'The Squirrel', 'Puffins' and 'The Rearing Horse', all with certificates, together with a cat, butterfly and miniature perfume bottle, all boxed (6) £100-150

274. Swarovski cut glass crystal animals, including a bear, owl, swan (2), bird bath, cat, bird, rabbit and a dog, together with a quantity of mirrored display bases (9) £50-100

275. A pair of Art Deco elephant glass bookends, possibly by Heinrich Hoffman, the frosted glass elephants upon clear glass rectangular bases, af (unattached to the bases), height 12 cm (2) £80-120

276. A 20th Century Kosta glass sculpture by Vicke Lindstrand, one side with a polished face engraved with an astronaut signifying man landing on the moon, beneath the title 'SKF GT Championship 1970' (later inscription), the other side moulded with moulded circles, engraved signature to the lower base, height 20 cm £80-120

277. Geoffrey Baxter for Whitefriars, a textured range 'Cucumber' vase, pattern no.9679 in kingfisher blue, height 30 cm £100-120

278. Five pieces of Scandinavian glassware, including a Holmegaard smoked grey glass ashtray designed by Per Lutken, engraved '1958', diameter 12.5 cm, two blue glass vases; a lipped example c.1950, height 17.5 cm and another c.1928, height 13 cm, together with an Orrefors clear glass octagonal vase, c.2000, height 8.5 cm, and textured candle holder, diameter 13.5 cm (5) £100-150

279. An Ercole Barovier for Barovier & Toso clam shell bowl, likely from the 'a Grosse Costolature' range, in pale iridescent green, length 21 cm £80-120



280. A 1960s Czechoslovakian faceted conical Sommerso glass vase, in the style of Pavel Hlava (1924-2003), hand cut colourless metallurgical glass, amber tinted, a drop shaped interior with red glass underlay, unmarked, height 24 cm £40-60

281. A pair of Edwardian green glass salts, with silver rims, Birmingham 1904, together with a set of five Thomas Webb green glass vases, height 12.5 cm, five ale glasses and others (19) £70-90

282. A selection of 20th & 21st Century cut and moulded glassware, a Linda Allyn scent bottle and two others (one missing stopper), a Waterford Crystal mantel clock, a large green textured decanter, height 56 cm, a Steuben heart, three clear glass moulded bowls and two vases (12) £60-80



283. A large glass vase bearing signature for Galle, of substantial proportions, the yellow frosted glass, overlaid with raised painted decoration depicting trees and mountains rising upwards from the base and a body of water, height 44 cm £500-800



284. A green glass vase of damselflies bearing a signature for Galle, the two insects hovering above the ground, surrounded by a yellow aura, height 25 cm £300-500



285. An amber coloured glass vase with blue overlaid decoration bearing a signature for Galle, the decoration revealing the intricacies of flowers in bud and bloom, height 22 cm £200-300

286. A small amber coloured glass vase bearing signature for Galle, the decoration revealing the intricacies of flowers in bud and bloom, height 11 cm £80-120



287. A Michael James Hunter glass perfume bottle with certificate of authenticity, with encased flowers, together with a pair of millefiore beakers with pontil marks to base and attractive metallic covering, bottle height 15.5 cm (3) £60-100

288. A Bristol blue decanter, of bell shaped form in the manner of Thomas Webb, with pontil to base and Crown Staffordshire hanging 'Gin' plaque, height 27.5 cm £30-50

289. A Lalique opaque glass dove on a circular dish, the underside etched 'Lalique France', height 10 cm, diameter 10 cm, together with a ceramic scarab beetle pendant with a blue glaze (2) £120-180

290. A selection of 20th Century Wedgwood glassware, including a 1976 'XXI Olympiad, Montreal Topaz Tankard' no.53/750, 1978 'Everest Goblet', no.435/1500, 1977 'St. Paul's Christmas Goblet', together with a Webb Corbet 1973 'Commemorative Coronation' toasting goblet, majority with the original boxes and certificates (4) £40-60

291. A collection of Dartington commemorative glassware, including a 1979 'Derby Bicentenary' tankard, 1980 'Dodo Tercentenary' tankard, 1978 'The 25th Anniversary of the Queen's Coronation' tankard, 1977 'The Queen's Silver Jubilee', 1981 'The 100th playing of the F.A. Cup Final' tankard, 1982 'Maritime England Year' tankard and a 1981 toasting goblet to 'Commemorate the Marriage of the Prince of Wales and Lady Diana Spencer' no.1057/500, all in the original boxes (7) £60-80



292. A pair of Edwardian cranberry glass table lustres, having gilt and enamel floral decoration and cut crystal drops, with two circular wooden stands on bun feet, height 40 cm (2) £80-120

293. Two blue glass candle holders, of circular ribbed form, with metal suspenders and chains, height 17 cm (2) £40-60

294. Four pieces of commemorative glassware, consisting of a Thomas Webb crystal goblet to celebrate 'The Marriage of Prince Andrew to Miss Sarah Ferguson', a 1972 Stuart Crystal goblet to commemorate the 'Silver Wedding of H.M. the Queen and H.R.H. The Duke of Edinburgh' no.532/750, a 1982 Stuart Crystal goblet to commemorate 'The Wedding of H.R.H. Prince of Wales and Lady Diana Spencer' no.779/1000 and a Stuart Crystal 1973 goblet to commemorate 'The Wedding of H.R.H. Princess Anne and Capt. Mark Phillips' no.610/750, all in the original boxes, the Stuart Crystal items with certificates (4) £40-60

295. A Victorian stained glass panel, depicting a stork standing in a river enclosed in a central shield and flanked by Romanesque style columns, above is a crown and flag bearing shamrocks, 56 cm x 75 cm £200-300

296. A quantity of glass to include a matching pair of heavy cut decanters, together with various dishes and comports, height of decanters 26 cm (10+) £50-100

297. A wood and metal mounted decanter holder with three cut glass decanters, of tantalus type construction, two of the decanters with hallmarked silver tags, approximate height 32 cm £50-100

298. A green glass slug decanter of attractive waisted form with pontil mark to base, together with a Liquor bottle marked Jerez Spain with attractive gilt accenting of bows and grapes, a club shaped decanter and others (15+) £70-100

299. A quantity of good quality drinking glasses over two boxes, including bell shaped wine glasses, cut glass tumblers, heavy cut crystal jars (40+) £50-80



300. A 20th Century Lalique glass damselfly, opaque glass, signature to base, height 9 cm £50-100

301. Three matching mid Century retro glass lamp shades, with white frosted glass with tapered red striped design, height 19 cm, width 26 cm (3) £60-100

302. A French crystal glass centrepiece fruit bowl, with splash design width 60 cm, height approximately 20 cm £40-60

303. Cut Crystal Drinking Vessels and Other Table Ware, various pieces including, examples by Waterford, a tazza, set of six sherry glasses, five matching wine glasses and a pair of lemonade glasses, other drinking vessels including Stuart (18), decanters with stoppers (5), Stuart celery vase and other vases (4), fruit bowls/baskets (4), boxed Edinburgh Crystal cake stand and others, G-E, (50) in three boxes £100-150

ASIAN

304. Two Chinese Qing dynasty ginger jars, with polychrome decoration of flowers and dragons upon a yellow ground, one missing the cover, with two wooden stands, height (excluding stands) 10 cm & 15 cm, together with a crackleware vase, height 13 cm, all with marks to bases (3) £120-180

305. A 19th Century Chinese celadon bowl, of hemispherical shape, the celadon glaze applied in a uniform manner to the heavy earthenware body, diameter 14 cm, height 6.5 cm £80-120



306. A pair of 19th Century Chinese Famille rose beakers, the ceramic bodies with overglaze decoration for the European export market with near identical depictions of Oriental life, including floral arrangements and rituals, amidst a landscape of typical architecture and trees covered in blossom, each handle taking the form of a mythical creature, height 12.5 cm (2) £150-200

307. A Chinese brass bell, the bell hanging from a stand with calligraphic design surmounted with bamboo leaves, on four down turned feet, height 19 cm £50-80

308. Two Chinese Qing Dynasty pewter jugs and covers, with engraved exteriors and straw work binding to the handles, marks to the bases, height 12 cm & 21 cm £40-60

309. A group of Chinese celadon ground multi-lobed bowls, of miniature proportions, decorated with overglaze of flowers and butterflies, diameter 5 cm (4) £50-80

LOT 310



310. A Chinese Qianlong seal marked bowl, likely late 19th / early 20th Century, overglaze polychrome enamel, decorated with a profusion of flowers and fruit bearing plants, on a crimson ground, approximate diameter 22 cm, together with a hardwood stand (2) £150-200

311. A Japanese Meiji period tortoiseshell dish, with lacquer decoration of an eagle looking upon creatures in a burrow, diameter 28.5 cm £50-100



312. A late 19th Century Japanese carved ivory figure group, of two men conversing whilst a child attempts to distract them, marks to the underside, with a wooden stand, af (child's hand broken), height (excluding stand) 18 cm £150-250

313. A late 19th Century Asian carved ivory couple, the woman putting her arms around the man, marks to base, height 12 cm, together with two tusk vases with pierced and carved decorations of temples and dragons, on wooden stands, height (including stands) 10.5 cm & 13 cm (3) £100-150

314. A pair of Chinese export vases, blue and white glaze with flowers and scrolling motifs, marks to the base, height 24 cm, together with another polychrome vase, height 28.5 cm (3) £70-100

315. A 20th Century part tea service, painted with traditional landscape scenes enclosed by a gilt border, consisting of four cups, six saucers, four plates, two serving plates, a cream jug and a teapot (18) £50-100

316. Two Chinese export Famille Rose plates, decorated with flowers, motifs and birds, marks to base, diameter 32 cm (2) £30-50

317. A pair of 20th Century oriental vases converted into lamp bases, the ceramic ovoid shaped body painted with birds and flowers, mounted upon a turned circular wooden stand, height 27 cm (2) £50-100

318. A Chinese metalwork opium pipe base, with an engraved image of smokers and Chinese calligraphy, height 12 cm £30-50

319. An oriental hardstone carving of a toad, with glass eyes, length 10.5 cm, a carved model of a prophet, height 13 cm, and a Chinese cloisonné enamel plate, the centre decorated with flowers and a butterfly, diameter 26 cm, with a wooden stand (3) £40-60

320. A Chinese carved soapstone sculpture, depicting a village within a rocky landscape, on raised soapstone stand, length 51 cm, height 25 cm £60-80

321. Two Meiji period Japanese ivory okimonos, carved as a figure holding a fan, height 6 cm and a pair of figures conversing whilst one stands on a toad, height 4.5 cm (2) £100-200

322. Three Meiji period Japanese ivory okimonos, two carved as a rats, one playing with a ball, another harvesting nuts, length 3 cm & 4.5 cm together with a small carved rodent, length 2 cm (3) £100-200

323. A 20th Century Chinese blue and white ginger jar, with lobed body, painted with scenes of people working and frolicking, height 22 cm £60-80

324. A Japanese satsuma twin handled vase, with an orange crackle glaze and decorated in white and gilt flowers, no marks to the base, height 41 cm, together with a continental Polish flower holder, decorated with pheasants, height 14 cm (2) £50-100



325. A pair of contemporary Chinese lamps, with white rectangular ceramic bodies painted with blue symbols, placed upon wooden stands with matching lampshades, height 41.5 cm (including shade), together with a large ceramic lamp base painted flowers, birds and scrolling motifs, upon a wooden stand, height 54 cm (excluding shade), a tinplate Asian lamp decorated with cranes, height (including shade) 69 cm, with a turned wooden example designed to mimic a candlestick, height 59 cm (5) £100-150



326. A pair of Daoguang reign mark dishes, thought to be of the period 1821-1950, decorated in overglaze polychrome enamels, with a gold reserve, embellished with flowers and butterflies, each having cartouches painted with figures playing traditional games, the bases decorated with four red bats for good fortune, spur mark present on each one, diameter 23 cm (2) £200-300

327. A lacquered wooden South East Asian tiffin box, of cylindrical form, the base with a mythical beast motif, the cover with hidden dancing deities, opening to reveal an internal lacquered bowl splitting into two compartments, height approximately 16.5 cm £30-50

328. Four late 19th & early 20th Century Chinese export blue and white ginger jars, two with covers, three with prunus decoration, another with cartouches of birds perching upon branches, the largest example approximate height 18.5 cm Provenance: one is accompanied by a letter from the British museum dated 1983 which declares that it's Kangxi mark is spurious, yet it is considered a 19th Century example. (4) £100-150

329. A Chinese green glazed water pot, together with an ovoid jar, with pale blue reserve, upper ruyi border, and decoration of waterfowl, water-flora and insects, height of jar approximately 28 cm £50-100

330. A large crackleware charger together with a quantity of Oriental ceramics, to include several small dishes depicting a dragon, prunus, a figure on horseback, a lidded barrel shape jar with pink and yellow ground and two lidded ginger jars, diameter of charger 37.5 cm (12) £100-150



331. A Japanese Meiji period lidded hexagonal topped jar with cloisonné enamel decoration, with circular bands forming the upper border, and considerably smaller circles surrounding them, cartouches taking the form of fans and multi-lobed shape with naturalistic depictions of flora within, along with a profusion of highly geometric sunflower like blooms, the motif is continuing in the metal finial, approximate height 11.5 cm £150-250

332. A Chinese white cameo glass vase with overlaid green decoration, depicting butterflies amidst flowers, height 25.5 cm £100-200

333. A pair of turquoise glazed Chinese Kylin, or dogs of Fo, coming from a tradition of earthenware figures guarding temples and tombs: one is bearing down upon an ornate ball, the other restraining a demonic looking creature, together with a glass dish evocative of cloisonné enamel with colouring applied within metal framed sections and an upper ruyi border, the dogs height 14.5 cm (3) £60-100

334. Last quarter of 20th Century Chinese four fold screen, the fabric showing a single building in an extensive rocky, coastal landscape, backed onto dark wood, dimensions (when fully extended) approximately 180 cm x 90 cm £80-100

335. A 20th Century Tibetan Gau amulet box, the structure made of silver coloured metal in a rectangular form, the borders with filigree rope-work and miniature panels surrounding a central red stone, to the bottom a number of chains with circular beads to the ends, attached to a later coral beaded cord, diameter 7.5 cm £60-80

336. A contemporary Chinese ginger jar, the body and lid decorated with four panels depicting flowers or figures, gilt borders and polychrome glaze, marks to base, height 22 cm £50-100



337. Three tea bowls with blue and white bordered decoration, one with a Chinese calligraphic inscription to the side and a hand painted image of two figures behind foliage, another, likely late 18th or early 19th Century, with external polychrome decoration of figures including a boy and mother and a blue and white example, likely to be British pearlware, together with some stands and other later blue and white wares, (8+) £80-120

338. A Chinese famille verte Kylin resting upon a pierced sphere, together with a celadon glazed bowl with internal anhua decoration, later celadon lidded pot and attractive attendant type figure with fluid green hued glaze (4) £80-120

339. Several pieces of porcelain with famille rose decoration together with two tiny metal pots with Chinese canton enamels, accompanied by two stands, the largest bowl has an approximate diameter of 17.5 cm, the smallest enamelled pieces measure approximately 4 cm (7) £80-120

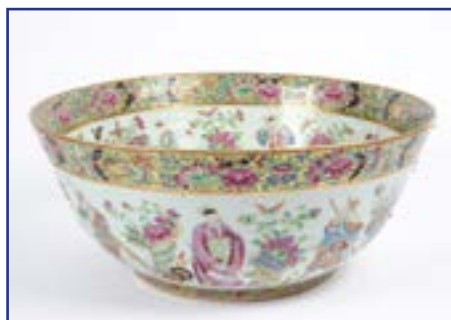


340. A Chinese cloisonné enamel box, with teal blue ground and alternating floral decoration, finished with gold gilt and resting on four feet, length 12 cm, height 7.5 cm, £100-150

341. Three Chinese textile and card figures one with real human hair and beard, together with four lacquered boxes, the longest figure 36 cm (7) £70-100



342. A pair of jadeite nephrite panels, with naturalistic imagery, length 8 cm £100-200



343. A large 18th Century Chinese export ware punch bowl, the famille rose overglaze enamel decoration of many figures in a variety of garments, some denoting statues, ceremony or military prowess, interspersed with instruments and antique objects, with a gold border of butterflies and pomegranates, diameter 40 cm £200-300

344. A Chinese lacquered caddy on four beasts' feet, of lozenge shaped form with multiple panels of figures and architecture in the Chinoiserie taste, height 13 cm £50-80

345. A Chinese print of a horse in motion together with various Oriental collectables, including a large blue and white charger, diameter 32 cm, goldfish bowl, two Japanese butterfly wing pictures, a resin Buddha and an Indian metalwork figure of a dancing Natraj Shiva, internal dimensions of print 44 cm x 27 cm (7) £40-80

346. Two Chinese blue and white plates, the first an 18th Century octagonal export plate with decoration of a garden, the second with a border in the Kraak manner and central depiction of an exotic bird perched on rocks, together with a large charger the central panel with dragons chasing the flaming pearl, and the section above depicting a ceremony with figures playing instruments and dressing up as dragons, diameter of charger 31 cm (2) £80-120

347. A Blanc de Chine figure of Guanyin, in traditional costume holding a flower, height 18 cm, together with a contemporary Chinese vase with painted and gilt decoration, height 18 cm (2) £50-70



348. After Giuseppe Castiglione oil on canvas portraits of Chinese Imperial figures, Princess Hsiang Fei' otherwise know as 'the fragrant concubine' and her counterpart Emperor Chien Lung, dressed in fine clothing and grasping a necklace of precious beads, she's resting one arm on a hardwood chair and touching a piece of fabric, 39 cm x 28 cm, framed and glazed (2) £300-500

349. A Chinese mid 20th Century tea set, decorated with many chickens in bright wucai style colouring, together with a blue and white vase and several lobed dishes (20+) £40-60

350. A Japanese decorative teaset produced by the Koshida factory of Satsuma Japan, with profuse decoration of chrysanthemums in polychrome colours with gilt highlighting (20+) £40-60



351. A Japanese gouache on fabric, depicting Samurai warriors, one in the foreground with an open fan and bow and arrows, another in the background followed by a figure on horseback, 66 cm x 58 cm, framed and glazed £120-180



352. A pair of Japanese Meiji period fan designs, both decorated with painted butterflies and flowers upon cream silk grounds, 46 cm x 26 cm, framed and glazed (2) £50-100

PAINTINGS, DRAWINGS & PRINTS

353. After Gabriel Metsu (1629-1667) 18th Century Dutch School canvas laid onto board, 'The Game Seller', 32 cm x 40 cm, framed £800-1200

354. Carl Milton-Jensen (1855-1928) oil on canvas, 'Woodland Scene', signed and dated 1909, 97cm x 149 cm x, in Regency style gilt frame, AF £150-250

355. Aage Berthelsen (1873- 1945) oil on canvas, 'Winter Landscape', with title plaque marked with the artists name and 'Udst. Charl. 1917', signed and dated 1918 lower right, 80cm x 120 cm x 80 cm, in gilt frame, AF £70-100

356. Frederik Julius Augustus Winther (Danish 1853-1916) early 20th Century oil on canvas, 'Woodland Scene with Cabin and Log Pile', initialled 'R.W.05', 37 cm x 32 cm, in gilt frame, AF £100-200

357. In the manner of Ernst Sybelg (Danish 1906-1981) oil on canvas, 'Abstract Rural Landscape', signed 'RS33', 67cm x 78 cm, in gilt frame, AF £60-100



358. 20th Century Greek School Impressionistic oil on canvas, 'Coastal landscape', signed (lower right), 67 cm x 50 cm, AF, unframed £80-120

359. Ronald Way (20th Century) oil on board, 'Portrait of a Man', signed 'Ronald Way' (lower left), 45 cm x 35 cm, framed £40-60

360. Marjorie Heather (1904-1989) oil on canvas, portrait of Graham Dorbain, 60cm x 44 cm, in a gilt plaster frame £20-40

361. 20th Century British oil on canvas, attributed to Erese Manila, 'Rembrandt Self Portrait', unsigned, dated 1986, 35cm x 28 cm £30-50

362. An impressionistic oil on board scene, possibly of Scandinavian origin, together with a watercolour portrait of a lady, the landscape 23.5 cm x 29 cm (2) £30-50



363. An oil on board or canvas mounted upon board, depicting an 18th Century figure dressed in a red coat, the verso with a depiction of flowers and a basket, 62 cm x 50 cm £80-100

364. A portrait of a young girl, unsigned, 14 cm x 18 cm in mount, framed £80-100

365. Clarence Ball (1858 - 1915) oil on board, 'Pot of Flowers', signed 'L. Clarence. Ball.' (upper and lower left), 'L. Clarence Ball, South Bend, Indiana, 1890' written on verso, 13.5 cm x 19 cm, framed £200-300



366. Catherine Barnes (present-) oil on canvas, 'Headache' a contemporary bedroom scene, 40 cm x 30 cm. Additional information: Barnes trained at the Camberwell School of Art, and has exhibited at the Russell Cotes Art Gallery & Museum £70-100

367. A Victorian oil on canvas highland landscape, depicting cattle crossing water, with indistinct signature to lower right, in a gilt frame approximately 40 cm x 60 cm £60-100

LOT 377



368. A Victorian oil on board portrait of a young boy unsigned, in gilt frame, internal dimensions approximately 44 cm x 31 cm £50-100

369. A pair of acrylics on canvas depicting Parisian scenes, one with a waterside view of Notre Dame, the other with the Eiffel tower, signed 'Burnet', 19 cm x 24 cm, framed, together with an oil on board of a kingfisher 40cm x 55 cm (3) £50-80

370. Three rural acrylic paintings together with a larger indistinctly signed watercolour, one with an interior scene, another with a Mediterranean setting, one of a farmer ploughing the fields and another of farm buildings, the largest internal dimensions 36 cm x 36 cm (4) £50-100



371. After George Romney (1765-1815) a portrait of Lady Mansfield, in a late 18th/early 19th Century frame, internal dimensions 69 cm x 72 cm, total size (including frame) 93 cm x 109 cm £1000-1200

372. A 19th Century oil on canvas of a rural worker aided by horses to pull along felled trees, together with a pair of antique prints of 'The Speaker's House' from the Beauties of England series and the 'Houses of Parliament' (3) £30-60



373. 20th Century British School H. Stewart oil on canvas after Sir William Orpen (1931), Portrait of Sir Winston Churchill' c.1916, signed 'H. Stewart after Orpen' (lower right), 'After the painting by Sir William Orpen of Sir Winston Churchill', 93 cm x 120 cm, framed. Provenance: purchased from Southgate auction house £100-200

374. Cyril J Ross (1891-1973) oil on canvas, Portrait of a seated woman', signed 'Cyril J Ross 1950' (lower left), 69 cm x 90 cm, framed and glazed. Provenance: Purchased from High Road Auction £100-200

375. 19th Century British School oil on canvas, Portrait of a seated gentleman', unsigned, the frame titled 'James Carlile Born 1752-Died 1835' (to the centre) 'Amos Gusille R.A.' (lower right), 89 cm x 70 cm, framed £100-200

376. Anna Lorimer (contemporary) mixed media on paper, French street scene', signed 'Anna Lorimer' (lower right), 75 cm x 82 cm, framed and glazed. AAR may apply to this lot. Provenance: Purchased from Southgate Auction House £100-200

377. Stuart Mcalpine Miller (1964-Present) oil on canvas, Unattainable Freedom', signed 'Stuart Miller 91.' (lower left), signed and titled 'Unattainable Freedom Stuart Miller' (to the back of canvas), 99 cm x 98.5 cm, framed. Provenance: Private Collection £600-800

378. A pair of 20th Century British School oil on canvas, 18th Century men and women posing for portraits', indistinctly signed (lower right) 'Dapres Guliott-- Lonney 1925' & 'Lonney Dapres Guliott-- 1925', 116 cm x 94 cm, framed, one of (2) Provenance: purchased from Chiswick Auction House February 2012 £100-200



379. Gilbert Diebold (1931-1997) French School mixed media on canvas, Waterscape with a cat playing with marine life', signed (lower right) 'G. Diebold', 146 cm x 114 cm. Provenance: purchased from Chiswick Auction House £50-100

380. Gilbert Diebold (1931-1997) French School mixed media on canvas, Crashing Waves', signed 'G. Diebold' (lower left), 114 cm x 89 cm. Provenance: purchased from Chiswick Auction House £50-100

381. Gilbert Diebold (1931-1997) French School mixed media on canvas, *Retour de Peche/ Return of Fishing*, signed 'G. Diebold' (lower left), 116 cm x 89 cm. Provenance: purchased from Chiswick Auction House 2014 £50-100



382. R. Henson 20th Century mixed media on canvas, *Nude study with arrow pointing downwards*, signed to verso 'R. Henson Nov/Dec 94', 126 cm x 75 cm £50-100

383. Clarke 20th Century mixed media on canvas, *Fish swimming in a rock pool*, titled (indistinct) 'A Wave 2 Clarke 91' (lower right), verso signed 'Dan Lee Clarke April 86-', 85 cm x 85 cm, framed £50-100

384. Rosslyn 20th Century abstract wall sculpture in relief on board, *Sunflowers*, signed (lower left) 'Rosslyn', 91.5 cm x 75 cm, framed £50-100

385. Béla Gábris (act.1940-1970) Hungarian school oil on canvas, *Winter Landscape*, signed 'Gabris' (lower left), verso signed 'Matra Hungary 1968 Gabris', 59 cm x 104 cm, framed. Provenance: purchased from Southgate Auction Rooms £60-80

386. 20th Century oil on canvas, *Mountainous landscape with horses passing over a footbridge*, signed 'Albert' (lower left), 58.5 cm x 78.5 cm, framed £50-100

387. J. Meyer 20th Century acrylic on canvas, *Landscape with cottages and hay bales*, indistinctly signed (lower right) 'J. L-- Meyer', 68.5 cm x 99 cm, framed £50-100

388. A pair of 19th Century British School oils on board, *'Street scene leading to Cathedrals'*, both signed (lower right) 'W. S. 1883' 18 cm x 13 cm, framed (2) £30-50

389. Two 20th Century paintings, one an oil on board *'two docked boats outside a building'*, signed (lower right) 'Esposito', 29 cm x 39 cm, the other *'Parisian Street Scene'* oil on canvas, signed (lower right) 'Burnett', 29 cm x 39.5 cm, both framed (2) £30-50



390. A contemporary surreal oil on canvas, depicting a 'dress being suspended between a trophy and a toilet with people marching beneath and famous landmarks and buildings in the background', unsigned, 82 cm x 83 cm, framed £50-100

391. A 20th Century oil on canvas, featuring a painter beside a window, monochrome colours, unsigned, 74 cm x 92 cm £30-50

392. 20th Century British School watercolour on paper, *Countryside Mill*, signed 'D.W.B. 1901' (lower right), 26 cm x 20.5 cm, framed and glazed £40-60



393. Claude Muncaster (British 1903-1974) watercolour on paper, *Kings Cross Station. London*, signed and dated 'Claude Muncaster, Jun 27' (lower right), together with a invoice from Crosswell Gallery, 20.5 cm x 29cm, framed and glazed £70-100

394. A Watercolour of a war veteran sat in a Devonshire pub, sat beside a barrel of 'Whiteways Devon Cyder' indistinctly signed to lower left, framed and glazed, internal dimensions, 20 cm x 30 cm £50-80

395. Three watercolours of Seychelles Islands, all with studies of boats, all framed and glazed, the largest has a label verso 'landing at Farquhar Island 1865' internal dimensions 24 cm x 34 cm, the smaller are framed together (2) £50-100

396. An Indian Mughal style gouache on fabric, with a hand painted procession, including a gentleman on horseback, framed and glazed, internal dimensions 60 cm x 42 cm £120-180

397. Four watercolour studies two being landscapes and two seascapes, one of the seascapes has printed letters and numbers to the foreground which may assist with attribution, the other with a castle at the tip of the coastline is indistinctly signed 'M Connoll', all are framed and glazed, largest 30 cm x 32 cm (4) £70-100

398. A watercolour interior study of a cathedral with great attention to its art and architecture, together with two modern religious prints in highly ornate gilt wood frames, the largest frame 45 cm x 51 cm (3) £70-100



399. Fred Jay Girling (1900-1982) pencil and watercolour, *'The Trawler Star of the Isles'*, 20 cm x 22 cm, framed and glazed £70-100



400. Alfred Pizzey Newton (1830-1883) watercolour on paper mounted on board, Ben Nevis', signed and indistinctly dated 'Alfred Newton 18--', the verso bearing a label 'Ben Nevis by Alfred Newton, property of D. S---y', 60 cm x 87 cm, framed and glazed. Additional information: Pizzey specialised in the depiction of mountain scenery. He worked in the Highlands of Scotland and obtained the patronage of Queen Victoria. Upon seeing his work 'View in Argyllshire' (OWS 1858), Ruskin wrote "Let Mr Newton but draw all the four sides of Ben Nevis as has done this one, and nobody need ever go to the mountain again for the mere sake of seeing what it is like" £150-250

401. Gerald Hulme 20th Century watercolour on paper, 'Splendid Parakeet (Male & Female)', signed (lower right) 'Gerald Hulme 65', verso bearing a label stating '(New South Wales) Blue Bonnet Parakeet. Western Australia. Printed Gerald Hulme 1965', 71 cm x 53cm, framed and glazed £30-50

402. James Lawson Stewart (1841-1929) British School watercolour on paper, Riverside scene with historical buildings with a fortified city in the background', signed (lower left) 'J. T. Stewart', 45 cm x 98 cm, framed and glazed £100-200

403. Early 20th Century British School watercolour', Farmer and Two Plough Horses Returning Home', initialled 'ALF' (lower right), 47.5 cm x 33.7 cm, framed and glazed £40-60



404. Four 20th Century Moghul School gouache paintings, A figure riding on an elephant hunting a camel', 16 cm x 25 cm, 'Four figures riding horseback whilst doves fly above them', 26.5 cm x 21 cm, 'A couple embracing', 22.5 cm x 14 cm and a 'Figure riding on horseback', 21 cm x 22.5 cm, all framed and glazed (4) £100-200

405. A pair of limited edition etchings, Windows' & 'Windows II' no 114/250 & 112/250, signed in pencil (indecipherable), 10 cm x 10 cm, together with a pair of prints depicting a series of teacups, 33 cm x 25.5 cm and two woodcut prints, all framed and glazed (6) £50-100

406. 'The Vanguard' after Mae Whirter etching, cattle in a rugged landscape, one leading the main herd, 16 cm x 25 cm framed and glazed £50-100

407. 20th Century acrylic on canvas, Edwardian Parisian street scene', signed 'Burnett' (lower right), 39 cm x 29 cm, framed £40-60

408. A pair of pastel studies of nudes, one a lady painting her toenails a vibrant red, the other washing from a basin, both framed and glazed, internal dimensions 40 cm x 50 cm (2) £40-80

409. A pair of drawings of buildings, the first a skyline study of a cathedral, the other a castle on the coast, both indistinctly signed, together with a quantity of prints including 'Buckingham Palace from the park', 'The Depot at Hexham' and 'Holy Island Castle with Lindisfarne in distance', all framed and glazed, largest 30 cm x 37 cm (15) £60-80



410. A 19th Century Gardelli Continental School miniature portrait of a woman, watercolour on ivory, dressed in classical attire, her hair in ringlets, signed 'N. Gardelli' (left), 7cm x 8cm, together with a classical frieze, signed 'Gardelli 72' (lower right), 6 cm x 12.5 cm, both with glazed papier-mâché frames (2) £120-180

411. Two 19th Century Continental School miniature circular portraits of women, watercolour on ivory, one wearing a bonnet, signed 'Lia' (lower right), diameter 4.7 cm, the other wearing a large green hat, signed 'Yanny' (lower right), diameter 3.3 cm, together with a printed oval portrait of a woman, diameter 10.3cm, all in ormolu frames (3) £80-120

412. 18th Century and 19 Century Portraits, an oil on canvas 18th Century oval portrait of a gentleman in gesso frame (some paint loss to face) 43 cm x 48.5 cm high, together with Victorian pastel portraits including oval portraits signed A dearden both dated 1879 of a mother and daughter each 48.5 cm x 64.5 cm and another, of a Victorian lady 61 cm x 81.5 cm, F-G (4) £100-120

413. Paul Horton (1958-) limited edition print on paper, 'Here for You', signed and titled in pencil (lower right), 17/95, 44 cm x 43 cm, framed and glazed, with certificate of authenticity £80-120

414. Mackenzie Thorpe (1956-) limited edition print on paper, 'She Loves Me', signed and titled in pencil (lower right), 195/850, 41 cm x 37 cm, framed and glazed, with certificate of authenticity £50-100

415. Mackenzie Thorpe (1956-) limited edition print on paper, 'Where's All the Beer Gone', signed and titled in pencil (lower right), HC18/18, 46 cm x 39 cm, framed and glazed with certificate of authenticity £50-100

416. Mackenzie Thorpe (1956-) limited edition print on paper, Lunch-time in South Bank', signed and titled in pencil (lower right), 337/850, 48 cm x 40 cm, framed and glazed with certificate of authenticity £50-100

417. Paul Horton (1958-) limited edition print on paper, A Grand Day Out', signed and titled in pencil (lower right), AP17/49, 35.5 cm x 43cm, framed and glazed with certificate of authenticity £80-120



418. Paul Horton (1958-) limited edition print on paper, Light of Love', signed and titled in pencil (lower right), 104/295, 33cm x 34cm, framed and glazed with certificate of authenticity £80-120

419. Paul Horton (1958-) limited edition print on paper, Here Comes Trouble', signed and titled in pencil (lower right), AP17/49, 30.5 cm x 33cm, framed and glazed with certificate of authenticity £80-120

420. Mackenzie Thorpe (1956-) limited edition print on paper, Long Is The Night', signed and titled in pencil (lower right), 682/850, 46 cm x 44cm, with certificate of authenticity £50-100

421. Ellen Graubart (Late 20th Century) limited edition print, Serious Dancers', signed titled and numbered 3/5 in pencil (lower margin), 26 cm x 52 cm, framed and glazed £20-30

422. Three limited edition prints, including two etchings of outbuildings, 'Cottages I' 161/200 & 'Cottages III' 180/200, both signed and titled in pencil (lower right), signature indecipherable, 20 cm x 20 cm and a photographic print, 'butterfly on a flower', signed in pencil 'Audley Money-Kyrle 2/40' (lower right), 40 cm x 33 cm, together with a watercolour on paper, 'Ceramic Plate and Bowl', unsigned, 33 cm x 33 cm, all framed and glazed (4) £50-100



423. A print of aubergines together with two others by the same artists, all bearing a signature and indications of a limited run of 53/100, printed upon Arches France 88 watermark paper, signature indecipherable but suggestive of 'Suliac', 74 cm x 55 cm, framed and glazed (3) £80-120

424. A pair of framed and glazed prints of South American women, together with a framed and glazed print of Egyptian Mamelouks and two antique printed maps both showing the Mediterranean sea, one framed and glazed the other loose, the largest 41 cm x 56 cm (5) £40-60



425. Three Edmund Dulac prints, depicting Oriental and Middle Eastern subjects, framed and glazed, internal dimensions 15.5 cm x 12 cm (3) £30-50

426. A framed and glazed 1830s map of Gloucestershire, together with two etchings St Mary's Church and the Radcliffe library and Oakridge Church, dimensions of the map 35 cm x 45 cm (3) £40-60

427. A small oil on board river scene together with five antique prints, all with ports, harbours and rivers as focal points of interest including 'Landing at Monkey Island', 'Old Hammersmith Bridge' and 'Honfleur', the prints all framed and glazed and largest internal print 15 cm x 21 cm (6) £40-60

428. A miniature silk work portrait of a lady in the Georgian taste, together with a circular framed miniature print of a child and another of an 'Orphan boy' in a verre eglomise frame, largest internal print 16 cm x 24 cm (3) £50-80

429. Two Madonna and child studies in gilt wood frames, together with a metalwork mirror with bevelled glass, one study is a print, the other is possibly an overpainted print, mirror 31 cm x 26 cm £70-100

430. Helen Layfield Bradley (1900-79) blind stamped print, the work is typical of Bradley with a depiction of a busy Northern cityscape in the early 20th Century, she was a contemporary of L S Lowry, her narrative style works are known for featuring the same characters amidst the crowds, framed but unglazed, internal dimensions, 41 cm x 57 cm £100-200

431. After Charles Hunt (British, 1803-1877) print on glass, "The 'Age' Brighton coach in 1852" approximately 65 cm x 50 cm, together with a tapestry panel depicting pheasant hunting, 46 cm x 51 cm (2) £50-80



432. A pair of Victorian studio portraits, 'Dr John Renton surgeon and apothecary of the University of Edinburgh' and Mrs Renton, both elaborately mounted under glaze in gilt frames and velvet, together with photographs and prints of attractive female sitters including a print of 'Leanora' with a songbird perched upon her forefinger, the largest 33 cm x 38 cm (8) £200-300

TEXTILES

433. Four 20th Century evening bags, with beaded and sequinned decoration, silk interiors and metal clasps (4) £40-60

434. A lady's brown fur coat with brown silk lining, width (shoulder to shoulder) 50 cm, length 105 cm, a crocodile skin handbag and one other, a large selection of crocheted and lace collars and an oval wooden tray with brass handles (parcel) £50-100

435. A large roll of Late 19th/ Early 20th Century fabric, with chain stitched flowers and leaves upon a cream linen ground, width 130 cm, together with a large woven bed cover or tapestry with floral decoration, 240 cm x 280 cm (2) £60-80

436. Two gentleman's coats, consisting of a 1930s double breasted overcoat, black fabric with a fur lining, shoulders 50 cm, length 132 cm and a gentleman's Austin Reed coat, brown suede exterior with faux fur lining, size 44 (2) £50-100

437. A lady's Frank Usher vintage evening dress, circa.1980's, fashioned in white stretch lycra, with a v shape neckline, a train and silver and gold beaded embellishment around the waist £30-50

438. Two pairs of vintage curtains, circa 1980's, lined, decorated with miniature green diamonds upon a white ground, hooks to the top, length 280 cm, width 120 cm (4) £30-50

439. A 20th Century christening robe, with lace around the neckline and hemline, together with a green damask Irish linen tablecloth decorated with shamrocks, a crochet tablecloth, embroidered cotton and more (parcel) £100-150



440. A collection of bags, including an Yves Saint Laurent brown leather clutch bag, an Arandu handbag, a J.M. Cueros handbag, a large brown leather travelling bag and a pair of Bose noise cancelling headphones, in the original box with a courtesy card £50-100

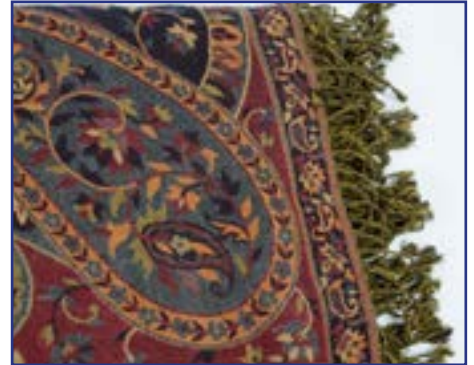
441. Two 20th Century woollen Welsh type blankets, one with green and red accents with tassels at either end, 170 cm x 145cm, the other with a green and grey pattern, 146 cm x 190 cm (2) £30-50

442. An Escada Lamb Napa purple leather jacket, with multi-colour silk lining, size 42, together with a matching handbag and brown fur hat (3) £30-50

443. A Mulberry scotch grain garment bag or luggage suit carrier, length (excluding handle) 108cm, together with a 20th Century tieback embroidered with flowers, brass rings to either end, length (excluding clasps) 112 cm (2) £70-100



444. Three vintage Gentleman's hats in boxes, consisting of two top hats and one bowler (3) £40-80



445. A large paisley shawl, cross woven, with tassel edges, scrolling motifs, approximately 225 cm x 125 cm £100-120

446. A lady's brown fur hat, together with a fur shawl with brown silk lining, length 142cm (2) £30-50



447. Of military interest a soldier's embroidery from an Egyptian WW1 campaign, his uniform suggests he is a Lance Corporal, it reads 'Souvenir of Egypt' c 1916, "from Dad with love to Harry", framed and glazed 48 cm x 38 cm £50-100

448. A selection of Dunhill bags, including four toiletry bags, one in the original slip bag and two handbags, together with three other handbags, a large selection of silk scarves by Dunhill and others and a Lincoln Bennett & Co. black felt bowler hat, inner circumference 57cm (25+) £50-100

449. A large selection of 20th Century linen and fabric, including tablecloths, doilies, placemats and more, some decorated with embroidery, white work and crochet (parcel) £50-70

450. 1930s and Later Table Linen, various items of vintage table linen including Irish Linen place mats in original paper wrapping, from Rogers Penge, damask table cloths, floral and crinoline lady embroidered examples, runners and other items and a peacock embroidered spectacle case, F-G, (Qty) in two boxes £60-80

451. A 20th Century sampler, in the tradition of practicing stitches and displaying ones handiwork with embroidery of insects, a parrot, flowers, trees and figures, with a practice alphabet and numbers, framed and glazed, 55 cm x 42 cm £30-50

FURNITURE & RUGS

452. A William IV mahogany dressing table mirror, the arched swing mirror above a two drawer base, raised on front tulip feet, 90 cm x 64 cm x 29 cm £60-80

453. A pair of Ercol armchairs, stained wood with drop in seats of tapestry upholstery, both with Ercol labels to underside, together with a 19th Century mahogany circular adjustable piano stool with tapestry cover raised on four turned tapered supports £40-60

454. A 19th Century Adams style gilt over mantle mirror, with three mirrored bevelled plates, 130 cm x 77 cm £60-100

455. A Regency mahogany buffet, with two cellarette drawers above flame mahogany panel doors, possibly later two tier shelving, turned column supports 92 cm x 56 cm x 160 cm £250-300



456. A mid 19th Century mahogany secretaire chest of drawers, three graduated drawers below fitted bureau drawer, AF, later handles, width 110 cm x 54 cm x 107 cm £100-200

457. Three 19th Century chairs, Rosewood balloon back dining chair, with floral upholstery, a stained beach slipper chair with cream covered upholstery, mahogany side chair with floral tapestry cover £40-60

458. A late 19th Century mahogany tripod table, with inlaid and banded top, 56 cm x 73 cm, AF £30-50

459. A contemporary button back armchair, with cream coloured floral upholstery, together with a footstool on Cabriole legs with Asian Elephant design upholstery, both with fire regulation labels £40-60

460. Two 19th Century button back walnut nursing chairs, upholstered in burgundy and blue with gold dots, sold together with Contemporary tapestry covered footstool (3) £50-80

461. A 19th Century Portuguese oak hall chair, with an embossed leather seat and back cover, brass studs to the sides, height 128 cm £30-50

462. A Regency Rosewood Teapoy, with brass inlay, lid opens to reveal fitted interior £300-500

463. A set of six Rosewood Bar Back dining chairs, with carved foliate back splats, with tapestry drop in seats, on Heptagonal shaped legs £100-150

464. A Georgian mahogany drop leaf breakfast table, on turned bulbous column, quadriform base, 134 cm x 100 cm (open) x 70 cm £50-100

465. A 19th Century mahogany chiffonier base, with central oval inlay to top, with two short drawers, above two doors, finished with pink pleated silk, 129 cm x 90 cm x 51 cm deep £30-50

466. A 19th Century mahogany six-tier what not, comprising of six graduated shelves with turned supports, width 81 cm x depth 25 cm x height 142 cm £80-120

467. A Mid 20th Century A. Younger Ltd. teak sideboard, a label to the inside door, with four long graduated drawers flanked by two cupboards, raised on shaped tapered supports, 168 cm x 49 cm x 83 cm £200-300



468. A Mid 20th Century teak drawer leaf table attributed to A. Younger Ltd, raised on shaped tapered supports, (closed) 128 cm x 80 cm x 89 cm (opened) 248 cm £200-300

469. A set of five mahogany dining chairs, upholstered with studded burgundy leather seats, AF £40-60

470. A Georgian mahogany oval drop leaf table, with cabriole legs on slipper feet, 122 cm x 50 cm 75 cm, flaps are 45 cm each £60-80

471. A contemporary beech Bentwood hat stand, height 94 cm £30-50

472. A stained pine chemist cabinet, containing a bank of twenty-five drawers, with turn around handles, AF, 111 cm x 28 cm x 89 cm £100-150

473. A Royal Berkshire Regiment travel box, the wooden box with applied metal surrounds, marked to Sgt T Rowland, AF £50-80

474. A 1950's armchair in the Louis XV style, wooden frame with pink upholstery, 92 cm x 70 cm x 60 cm £40-60

475. A George V coronation wooden stool, upholstered in pink, height 48 cm £40-60

476. A set of six 19th Century walnut dining chairs, with turned front supports, upholstered with gold fabric, together with a Victorian wind out mahogany dining table, on turned supports, and one extra leaf, 107 cm x 130 cm x 72 cm high, leaf is 51 cm, with winder (7) £50-100

477. An antique pine cricket table, 49 cm diameter x 60 cm high; together with an Edwardian stained beech armchair, lyre splat, floral seat, turned supports and stretcher; and a 19th Century mahogany bidet, missing liner, 32 cm wide x 51 cm deep x 44 cm high (3) £50-100



478. A 19th Century Chinese elm and metal bound travelling chest, the oblong top over a fall revealing a partially fitted interior, width 91 cm £200-300

479. An assembled Chinese hardwood dining room set comprising a dining table, the oblong top with slightly rounded corners and boldly moulded frieze raised on oblong section legs united by top shallow 's' shaped brackets, 169 cm x 84 cm x 81 cm, a set of five yoke back shape chairs, the slightly shaped top rails over a shaped splat with central round carving and panel seats raised on moulded tapered legs united by side stretchers (6) £500-700

480. A Regency rosewood and rosewood veneered work table, the oblong top with rounded corners and an inset leather panel over one drawer, with turned wooden handles and a work box below, raised on turned tapered legs and castors, 60 cm x 49 cm x 71 cm £100-150

481. A late George III Rosewood box line inlaid satinwood banded dressing table, the double rising top over a fitted interior with a mirror, over a false frieze drawer and long fitted drawer below, raised on square tapered legs and brass castors, 63 cm x 51 cm x 84 cm (closed) £100-200



482. A good late George III mahogany and ebony strung anthemion inlaid metamorphic table, with one flap dropping to reveal two sections, raised on ring turned tapered legs and brass cappings and castors, 77 cm x 53 cm x 77 cm (closed) £400-600

483. An English Regency mahogany and rosewood cross banded sofa table, the oblong flat top with rounded corners over a pair of frieze draws with later brass handles, divided by dummy drawer to the outside, carried upon dual turned rope twist columns and dual end supports terminating in brass cappings and castors and united by a bold rope twist stretcher, 154 cm x 72 cm x 75 cm (extended) £300-500

484. A contemporary yew wood dining suite, with twin pedestal table, on tripartite bulbous column supports, lion paw caps and castors with extra leaf, together with a set of six chairs, comprising two carvers and four side chairs, upholstered in floral tapestry, 174 cm x 106 cm x 73 cm, leaf 49 cm £200-300

485. A late 19th Century pedestal roll top desk, having fitted interior, with burr maple drawer fronts, pull out slide revealing lift up writing slope, tooled leather inserts, above three short drawers to each pedestal, on plinth base, on castors, 90 cm x 56 cm x 101 cm £150-250

486. A contemporary pitch pine refectory table, with hinged flap to one side, on two shaped supports, central stretcher, together with a matching bench, 183 cm x 90 cm x 73 cm closed, the flap 61 cm, bench 185 cm £50-100

487. A 19th Century mahogany four poster bed, having square tapering column supports to head and hexagonal to foot, with mahogany and blue upholstered canopy, matching drapes and brass fittings, 160 cm x 210 cm x 180 £300-500

488. A pair of antique continental rosewood armchairs, having rope twist columns, with panelled seat, scroll arms, plain back splat, on rope twist and block supports, with lower stretcher £50-100

489. A 19th Century mahogany mounted glazed unit, 62 cm x 93 cm x 13 cm £50-100

490. A contemporary mahogany two-tiered trolley with inlay, a slide to top and a drawer to under tier, turned handle and supports with brass castors, 87 cm x 47 cm x 78 cm, together with a 19th Century mahogany two-tier stand with gallery top and cross stretcher, on chamfered supports, 33 cm x 33 cm x 81 cm and a contemporary nest of yew wood coffee tables, consisting of one rectangular and two squared examples, with ebony stringing raised on tapered supports, (largest) 79 cm x 40 cm x 56 cm (3) £50-100

491. An Early 20th Century travelling trunk, domed structure with leather bindings, lined with an interior tray, 68 cm x 51 cm x 66 cm AF £100-150

492. A Mid 20th Century wall mounted oak coat rack, painted with four floral decorated panels and five later metal coat hooks below a plate rack, 148 cm x 47 cm x 13 cm £40-60

493. A 19th Century Chinese elm and brass bound small box on stand, the top divided in half and rising above plain sides mounted with an elaborate brass lock and reverse, raised on dual end support united by stretchers to each side, 67 cm x 36.5 cm x 45.5 cm £100-150

494. A Chinese camphor wood trunk, the moulded oblong rising top with decoration of two roundels over conforming moulded sides below, raised on short block feet, 105 cm x 53 cm x 58 cm £100-150

495. A Chinese fruitwood and pine dwarf cabinet, the oblong top with slightly upswept ends, over a pair of short frieze drawers and a pair of panel doors below, raised on dual end supports, 105 cm x 39.5 cm x 75 cm £150-200



496. A 20th Century Jefferys Bros (Billiards) Ltd bar billiards table, complete with balls skittles and cues, with later Jeffery Bros score board to top £300-500

497. A woven Middle Eastern rug, with blue and cream borders upon a red ground with a central geometric pattern, cream tassels to the edges, 130 cm x 85 cm £80-60

498. A large 20th Century silk rug, with a floral border and central motif on a pale silk ground and cream tassels to the edges, 280 cm x 201 cm £200-300

499. A 20th Century Jaf Kurd saddle bag, woven with geometric borders framing multiple medallions upon a red ground, the underside woven with alternating green and beige stripes, 51 cm x 54 cm, together with a Jaf Kurd rug with a geometric design, stitched edges and cream tassels along two sides, 108 cm x 60 cm (2) £50-100



500. A large 20th Century rug, with multiple geometric borders in a variety of colours, two central motifs upon a green ground, 253 cm x 120 cm £50-100

501. A 20th Century Persian runner, the multiple border with geometric shapes, the central panel with six interlocked motifs, brown tassels to two edges, 79cm x 285cm £50-100

502. A 20th Century Turkish rug, green, blue and red border with three scrolling motifs to the centre, 94 cm x 175 cm £70-100

503. A woollen Baluch rug, terracotta hooked medallions on brown field, multiple geometric borders, 183 cm x 102 cm £40-60



504. Two Caucasian woollen mats, each with central hooked medallion on red field, stylized borders, the larger 87 cm x 53 cm, the other 87 cm x 48 cm (2) £40-60

505. A large red ground Turkmen rug, having central square medallions, with geometric design, 240cm x 160cm £50-100

506. A large Chinese silk carpet, having cream ground with floral decoration, AF, 273 cm x 372 cm £40-60

507. An attractive rug accented mostly in green with multiple repeating border patterns, the central section having circular and quatrefoil like panels with eight pointed stars 158 cm x 94 cm £30-50

END OF AUCTION

ABBREVIATED TERMS AND CONDITIONS

Please ensure you view the Full Terms & Conditions on our website prior

Specialist Auctions Ltd Trading as Special Auction Services referred to as The Auctioneer and to include any person acting upon his authority. In these Terms of Sale the words 'you', 'yours', etc. refer to you as the Buyer. The words "we", "us", etc. refer to the Auctioneer. English Law shall govern all transactions associated with this sale.

Conditions of Sale

Third Party Liability: All persons on the premises of, or at a venue hired or borrowed by the Auctioneers are there upon their own risk. They shall have no claim against the Auctioneer in respect of any accident, injury or damage howsoever caused.

Bidding procedures and the Buyer: You must register your details with us before bidding and provide us with any requested proof of identity and billing information, in a form acceptable to us. You must also satisfy any security arrangements we have in place before entering the auction room to view or bid. We strongly recommend that you attend the auction in person. You are responsible for your decision to bid for a particular Lot. If you bid on a Lot, including by telephone and online bidding, or by placing a commission bid, we assume that you have carefully inspected the Lot and satisfied yourself regarding its condition and authenticity.

The Purchase Price: As Buyer, you will pay: a) the Hammer Price; b) a premium of 17.5% of the Hammer Price if bidding in the room, telephone bidding or leaving a commission bid directly with SAS; a premium of 20% of the Hammer Price will be charged for all bidding online via SAS LIVE and a premium of 22.5% will be charged for all bidding online via the-saleroom.com

c.) any artist's resale right royalty payable on the sale of the Lot; and d) any VAT due.

VAT: You shall be liable for the payment of any VAT applicable on the Hammer Price and premium due for a Lot. We will charge

VAT at the current rate at the date of the auction. Items in our catalogue may be marked in the following ways: (*) indicates that VAT is payable by the buyer on the hammer price as well as being an element in the buyer's premium. VAT will be chargeable at the standard rate (presently 20%). This imposition of VAT is likely to be because the seller is registered for VAT within the European Union and is not operating the Dealer's Margin Scheme or because VAT is due at 20% on importation into the UK. (**) indicates that the lot has been imported from outside the European Union. [These lots are liable to the standard rate of VAT (currently 20%); in certain circumstances these lots will incur a reduced rate of VAT (5%) on the hammer price and buyer's premium]. The rate will be clearly indicated. Lots which do not have either of the above symbols have no VAT payable on the hammer price. This is because such lots are sold using the Auctioneers' Margin Scheme. **The VAT included within the premium is not recoverable as input tax.**

Payment: Immediately following your successful bid on a Lot you will pay to us the Total Amount Due within 7 days, by cash (maximum £10000), debit card or bank transfer. Following the day of the sale, we will send out invoices to all successful telephone, online and commission bidders via email or post. We will where ever possible include on the invoice a charge for packing and shipping the lots purchased. Packing is undertaken in house and shipment is made by Courier or Royal Mail. Insurance cover on shipments is not provided within this charge. We also reserve the right to ask the buyer to complete a disclaimer regarding this service prior to despatching the goods. Alternatively, you will (at your own expense) pay for and personally collect or arrange your own courier to collect any Lots that you have purchased. This must be undertaken no later than 7 days following the day of the auction. You may not claim or collect a Lot until you have paid for it. If you do not pay for or collect the Lot within this time period, you will be responsible for any reasonable removal, storage and insurance charges in relation to that Lot. **Warranties:** The Seller warrants to us and to you that: the Seller is the true owner of the Lot for sale or is authorised by the true owner to offer and sell the lot at auction; the Seller is able to transfer good and marketable title to the Lot to you free from any third party rights or claims; and as far as the Seller is aware, the main characteristics of the Lot set out in the auction catalogue (as amended by any notice displayed in the saleroom or announced by the Auctioneer at the auction) are correct. If, after you have placed a successful bid and paid for a Lot, any of the warranties above are found not to be true, please notify us in writing. Neither we nor the Seller will be liable to pay you any sums over and above the Total Amount Due and we will not be responsible for any inaccuracies in the information provided by the Seller except as set out below.

Descriptions and condition: Our descriptions of the Lot will be based on: (a) information provided to us by the Seller of the Lot (for which we are not liable); and (ii) our opinion (although it is likely that we will not be able to carry out a detailed inspection of each Lot). Weights and measurements given are all estimates. We will give you a number of opportunities to view and inspect the Lots before the auction. You (and any independent consultants acting on your behalf) must satisfy yourself about the accuracy of any description of a Lot. We shall not be responsible for any failure by you or your consultants to properly inspect a Lot. Representations or statements by us as to authorship, genuineness, origin, date, age, provenance, condition or estimated selling price involve matters of opinion. We undertake that any such opinion will be honestly and reasonably held and accept liability for opinions given negligently or fraudulently. Please note that Lots (in particular second-hand Lots) are unlikely to be in perfect condition. Lots are sold "as is" (i.e. as you see them at the time of the auction). Neither we nor the Seller accept any liability for the condition of second-hand Lots or for any condition issues affecting a Lot if such issues are included in the description of a Lot in the auction catalogue (or in any saleroom notice) and/ or which the inspection of a Lot by the Buyer ought to have revealed. We will give indications of provenance where stated by sellers. It is imperative that potential buyers or their Agents inspect lots that interest them prior to the auction. Purchases of autographed materials and works are made at the risk of the purchaser. Subject to our Terms and Conditions we cannot accept returns on these items.



Paddle

80 GREENHAM BUSINESS PARK, NEWBURY, RG19 6HW
TELEPHONE: 01635 580 595
mail@specialauctionservices.com
AC011019

NAME: _____

ADDRESS: _____

_____ POSTCODE: _____

TELEPHONE: _____

EMAIL: _____

PREFERRED METHOD OF COLLECTION /DESPATCH OF PURCHASES _____

AREA OF INTEREST: _____

To Specialist Auctions Ltd trading as Special Auction Services.

Please execute the following bid(s) on my behalf as cheaply as possible given the competition of other bid(s) and/or any reserve. The prices shown in Pounds Sterling are the Hammer Price to which will be added the Buyer's premium of 17.5% plus Value Added Tax together with any Value Added Tax that may be payable on the Hammer Price.

I have read and agree to abide by Special Auction Services Full Terms and Conditions.

I agree to my details being held on a data base to enable me to receive correspondence regarding future auctions.

I also agree to Special Auction Services only forwarding my data to Couriers should I confirm that shipping of my purchases is required.

SIGNED: _____ DATE: _____

Lot Number	Description	Max Bid (£)

Buyers Premium 17.5% plus Valued Added Tax making a total of 21% of the Hammer Price